

PROPOSED WORK

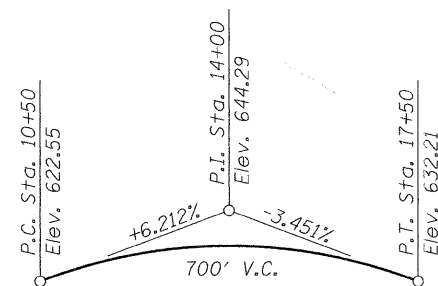
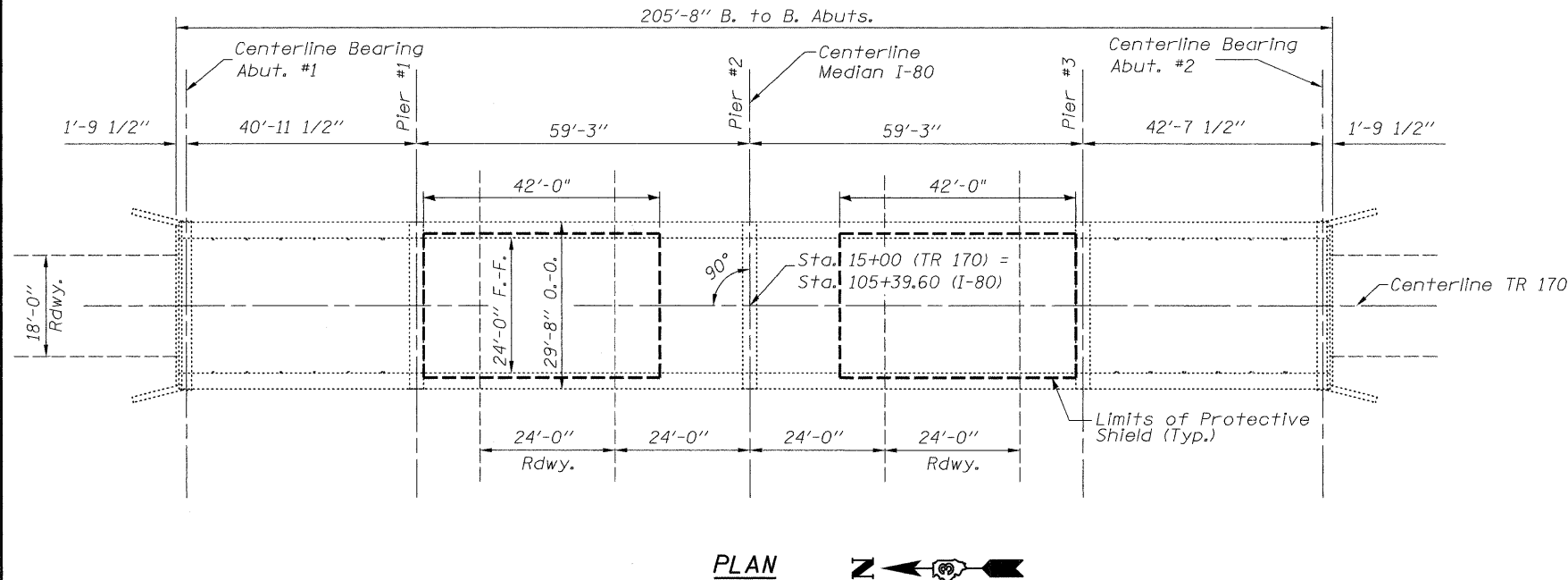
Structure: S.N. 050-0127
1. Deck repair

GENERAL NOTES

Plan dimensions and details relative to existing plans are subject to nominal construction variations. The Contractor shall field verify existing dimensions and details affecting new construction and make necessary approved adjustments prior to construction or ordering of materials. Such variations shall not be cause for additional compensation for a change in scope of the work, however, the Contractor will be paid for the quantity actually furnished at the unit price bid for the work.

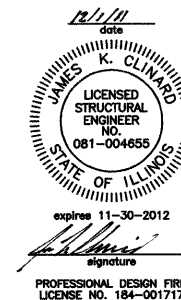
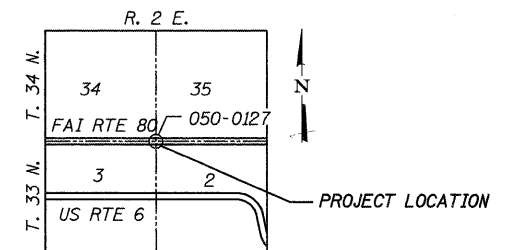
TOTAL BILL OF MATERIALS

ITEM	UNIT	QUANTITY
Deck Slab Repair (Full Depth, Type I)	Sq. Yd.	20.6
Deck Slab Repair (Full Depth, Type II)	Sq. Yd.	3.6
Deck Slab Repair (Partial)	Sq. Yd.	40.4
Protective Shield	Sq. Yd.	240



DESIGN STRESSES

fc= 1400 p.s.i. (Concrete)
fs= 20,000 p.s.i. (Reinforcement)
n= 10



GENERAL PLAN & ELEVATION
T.R. 170 (E. 10TH) OVER F.A.I. RT. 80
SECTION (50-2)RS-5, BR-1 & (50-3)RS-7
LASALLE COUNTY
STATION 105+39.60
STRUCTURE NO. 050-0127

FILE NAME = 0500127-66A48-GENPLAN-001.DGN	USER NAME =	DESIGNED - JKC	REVISED -	STATE OF ILLINOIS DEPARTMENT OF TRANSPORTATION	SHEET NO. 1 OF 3 SHEETS	F.A.I. RTE. = 80	SECTION = (50-2,4)RS-5 & (50-3)RS-6	COUNTY = LASALLE	TOTAL SHEETS = 103	SHEET NO. = 03	
CHAMLIN & ASSOCIATES PERU, ILLINOIS MORRIS	PLOT SCALE =	CHECKED -	REVISED -								
	PLOT DATE =	DRAWN - NV	REVISED -								
		CHECKED -	REVISED -								

CONTRACT NO. 66A48
ILLINOIS FED. AID PROJECT