

INDEX OF SHEETS

- 1. COVER SHEET
- 2. GENERAL NOTES
- 3. SUMMARY OF QUANTITIES
- 4 - 5. TYPICAL SECTION
- 4 - 6. SCHEDULES
- 7 - 11. REPAIR DETAILS SN: 053-2012
- 12 - 16. REPAIR DETAILS SN: 053-2013
- 17 - 22. REPAIR DETAILS SN: 053-2014
- 23 - 27. REPAIR DETAILS SN: 050-2523
- 28 - 32. REPAIR DETAILS SN: 050-2589
- 33 - 37. REPAIR DETAILS SN: 032-2519
- 38 - 40. SOIL BORING LOGS

STANDARDS

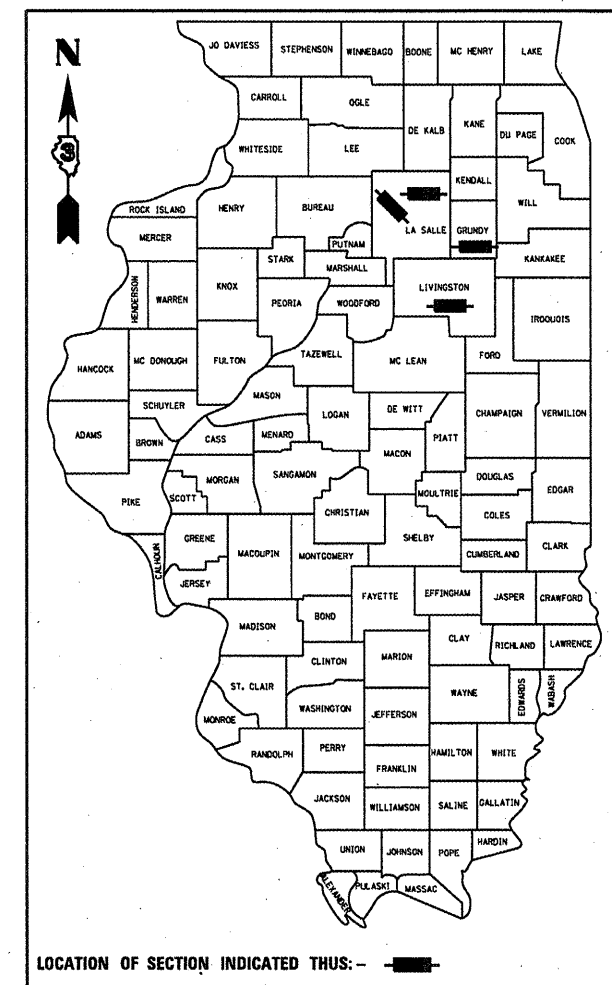
- 000001-06 STANDARD SYMBOLS, ABBREVIATIONS AND PATTERNS
- 001001-02 AREAS OF REINFORCEMENT BARS
- 001006 DECIMAL OF AN INCH AND OF A FOOT
- 701001-02 OFF-ROAD OPERATIONS 2L, 2W, MORE THAN 15' (4.5 m) AWAY
- 701006-03 OFF-ROAD OPERATIONS 2L, 2W, 15' (4.5 m) TO 24" (600 mm) FROM PAVEMENT EDGE
- 701201-04 LANE CLOSURE, 2L, 2W, DAY ONLY, FOR SPEEDS Δ 45 MP
- 701321-12 LANE CLOSURE, 2L, 2W, BRIDGE REPAIR WITH BARRIER
- 701400-05 APPROACH TO LANE CLOSURE, FREEWAY/EXPRESSWAY
- 701406-06 LANE CLOSURE, FREEWAY/EXPRESSWAY DAY OPERATIONS ONLY
- 701901-02 TRAFFIC CONTROL DEVICES
- 704001-07 TEMPORARY CONCRETE BARRIER

STATE OF ILLINOIS
DEPARTMENT OF TRANSPORTATION
DIVISION OF HIGHWAYS
PROPOSED
HIGHWAY PLANS

VARIOUS ROUTES
D3 WING WALL REPAIR 2012-1
WING WALL REPAIR
VARIOUS COUNTIES

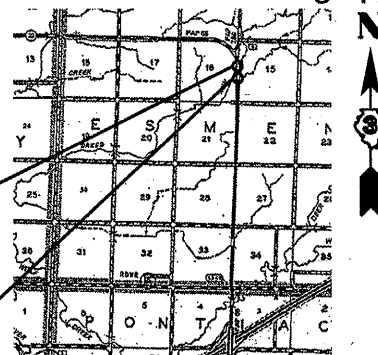
CONTRACT NO. 66B42
 C-93-118-11

F.A.P. RTE.	SECTION	COUNTY	TOTAL SHEETS	SHEET NO.
VAR	VAR	VAR	40	1
ILLINOIS			CONTRACT NO. 66B42	



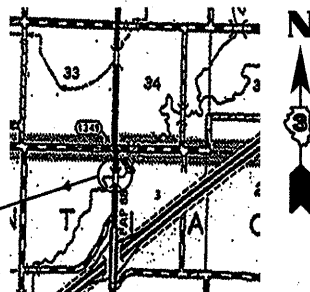
LOCATION 1

SN: 053-2012: (7'x12' DUAL BARREL BOX CULVERT)
 IL 23 - 4.38 MILES NORTH OF I-55
 LIVINGSTON COUNTY



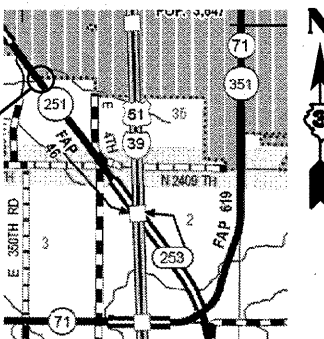
LOCATION 2

SN: 053-2013: (7'x12' DUAL BARREL BOX CULVERT)
 IL 23 - 4.31 MILES NORTH OF I-55
 LIVINGSTON COUNTY



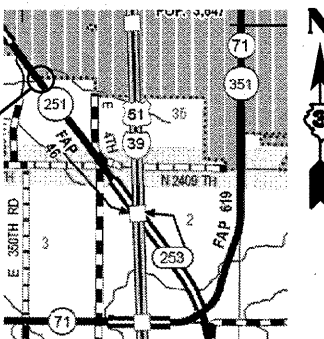
LOCATION 3

SN: 053-2014: (9' x 5'-6") DUAL BARREL BOX CULVERT)
 IL 23 - 1.6 MILES NORTH OF I-55
 LIVINGSTON COUNTY



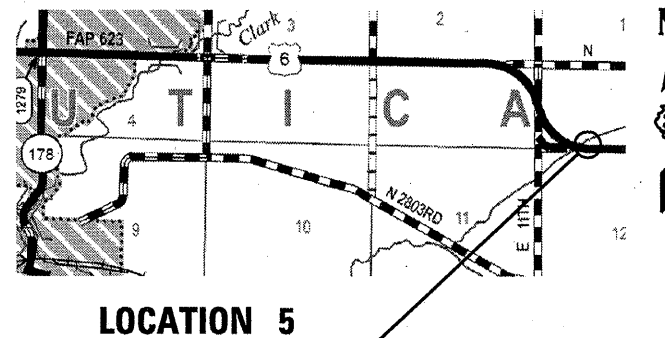
LOCATION 4

SN: 050-2523: (6'x6' BOX CULVERT)
 IL 251 - 2.0 MILES NORTH OF IL 71
 LASALLE COUNTY



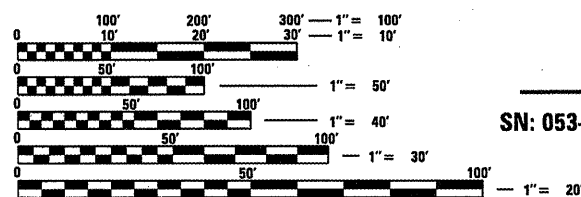
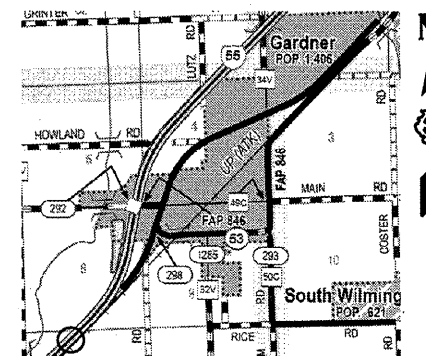
LOCATION 5

SN: 050-2589: (9'x4' BOX CULVERT)
 US 6 - 3.5 MILES EAST IL 178
 LASALLE COUNTY



LOCATION 6

SN: 032-2519: (10'x5' BOX CULVERT)
 I-55 SB - 2.1 MILES SOUTH OF
 IL 53 GARDNER INTERCHANGE
 GRUNDY



FULL SIZE PLANS HAVE BEEN PREPARED USING STANDARD ENGINEERING SCALES. REDUCED SIZED PLANS WILL NOT CONFORM TO STANDARD SCALES. IN MAKING MEASUREMENTS ON REDUCED PLANS, THE ABOVE SCALES MAY BE USED.

J.U.L.I.E.
 JOINT UTILITY LOCATION INFORMATION FOR EXCAVATION
 1-800-892-0123
 OR 811

PROJECT ENGINEER: JOE KANNEL, PE
 UNIT CHIEF: RON WOODSHANK
 TOWNSHIP: VARIOUS

CONTRACT NO. 66B42

STATE OF ILLINOIS
 DEPARTMENT OF TRANSPORTATION
 DIVISION OF HIGHWAYS

SUBMITTED 12/28 20 11
Eric S. Therkildsen
 DEPUTY DIRECTOR OF HIGHWAYS, REGION ENGINEER

Feb 3 20 12
John D. Baranzelli, P.E.
 ENGINEER OF DESIGN AND ENVIRONMENT

Feb 3 20 12
William R. Fidler
 DIRECTOR OF HIGHWAYS, CHIEF ENGINEER

**PRINTED BY THE AUTHORITY
 OF THE STATE OF ILLINOIS**