

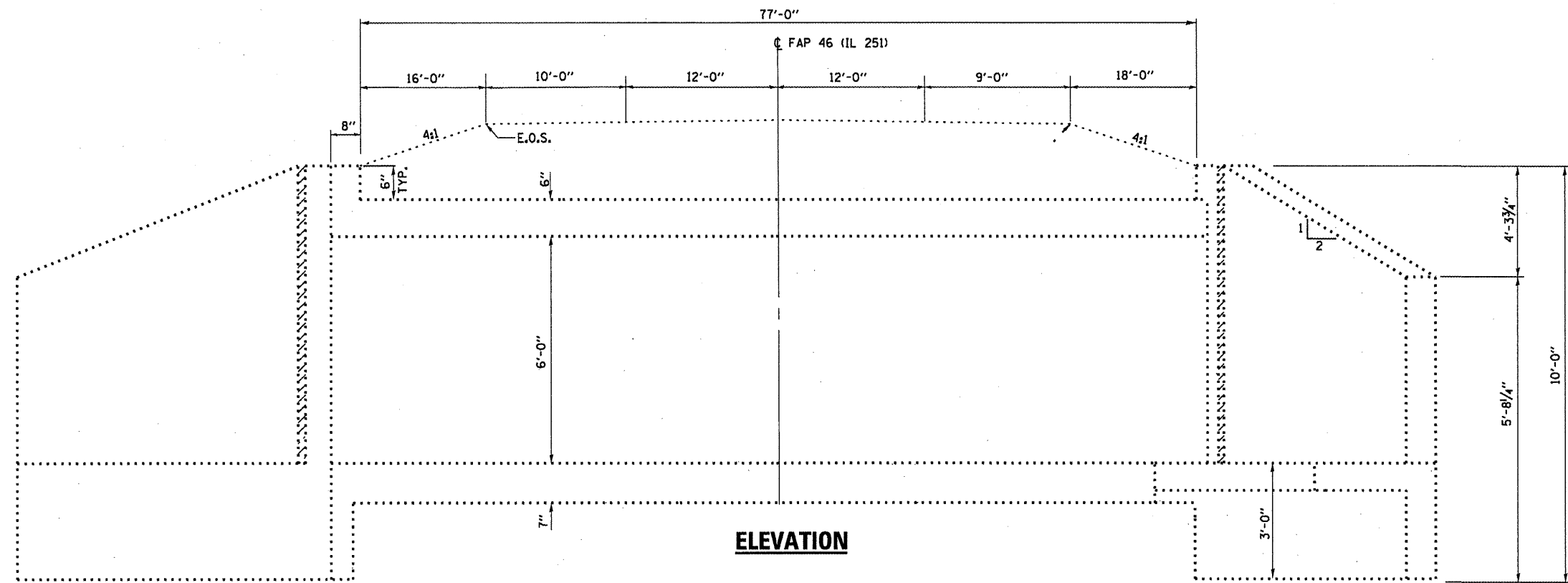
**GENERAL NOTES**

REINFORCEMENT BARS DESIGNATED (E) SHALL BE EPOXY COATED.  
 WATERPROOFING MEMBRANE SHALL BE APPLIED TO THE DESIGNATED AREAS  
 ON THE BACKSIDE OF THE WINGWALL AS DETAILED.

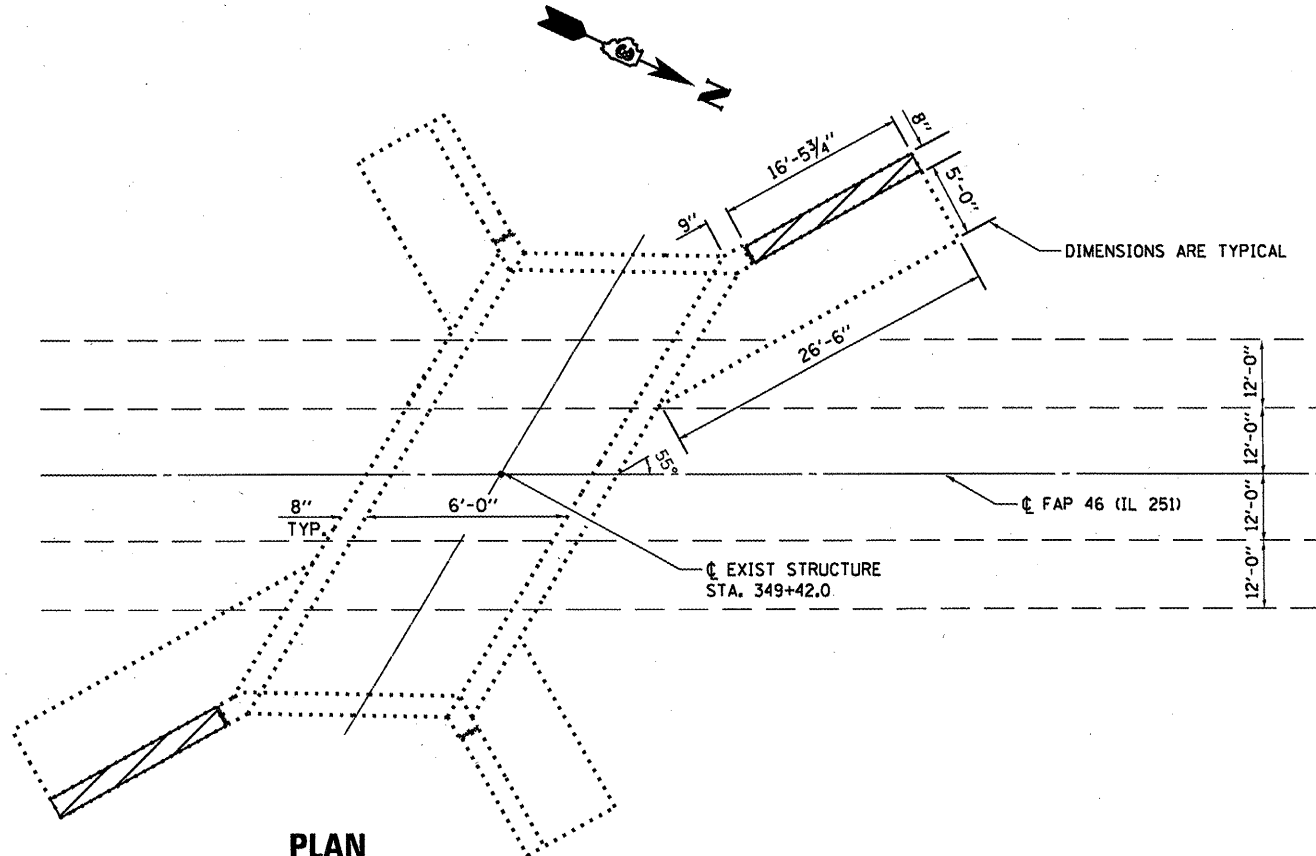
 **DAMAGED WING WALL(S)  
 TO BE REPLACED**

**TOTAL BILL OF MATERIAL**

ITEM	UNIT	TOTAL
STRUCTURE EXCAVATION	CU YD	26
FURNISHED EXCAVATION	CU YD	26
CONCRETE REMOVAL	CU YD	4.0
CONCRETE BOX CULVERTS	CU YD	4.0
REINFORCEMENT BARS (EPOXY COATED)	POUND	440
SHEET WATERPROOFING MEMBRANE SYSTEM	SQ YD	6.0



**ELEVATION**



**PLAN**



*David Carl Puzey 1/31/12*  
*Expires 1/30/12*

FILE NAME =	USER NAME = pateluj	DESIGNED - YOGESH PATEL	REVISED -
c:\pwork\pwork\pateluj\d0266589\036642-sheets.dgn		DRAWN - YOGESH PATEL	REVISED -
PLOT SCALE = 100.0000 / in.		CHECKED - RON WOODSHANK	REVISED -
PLOT DATE = 12/27/2011		DATE -	REVISED -

STATE OF ILLINOIS  
 DEPARTMENT OF TRANSPORTATION

**GENERAL PLAN AND ELEVATION  
 FOR LOCATION 4: SN 050-2523**

F.A.P. RTE. VAR	SECTION VARIOUS	COUNTY VARIOUS	TOTAL SHEETS 40	SHEET NO. 24
			CONTRACT NO. 66B42	
[ILLINOIS] FED. AID PROJECT				