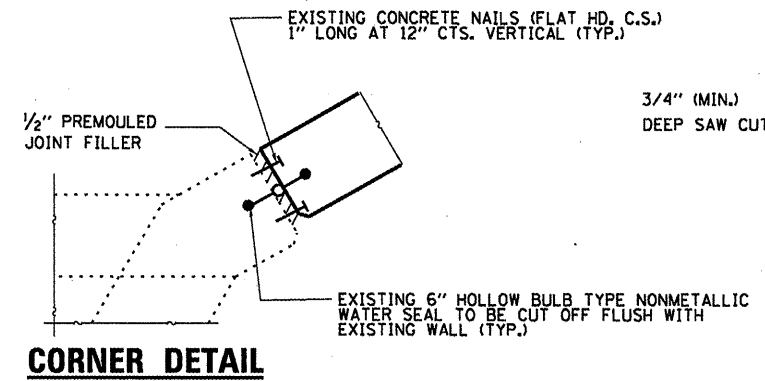
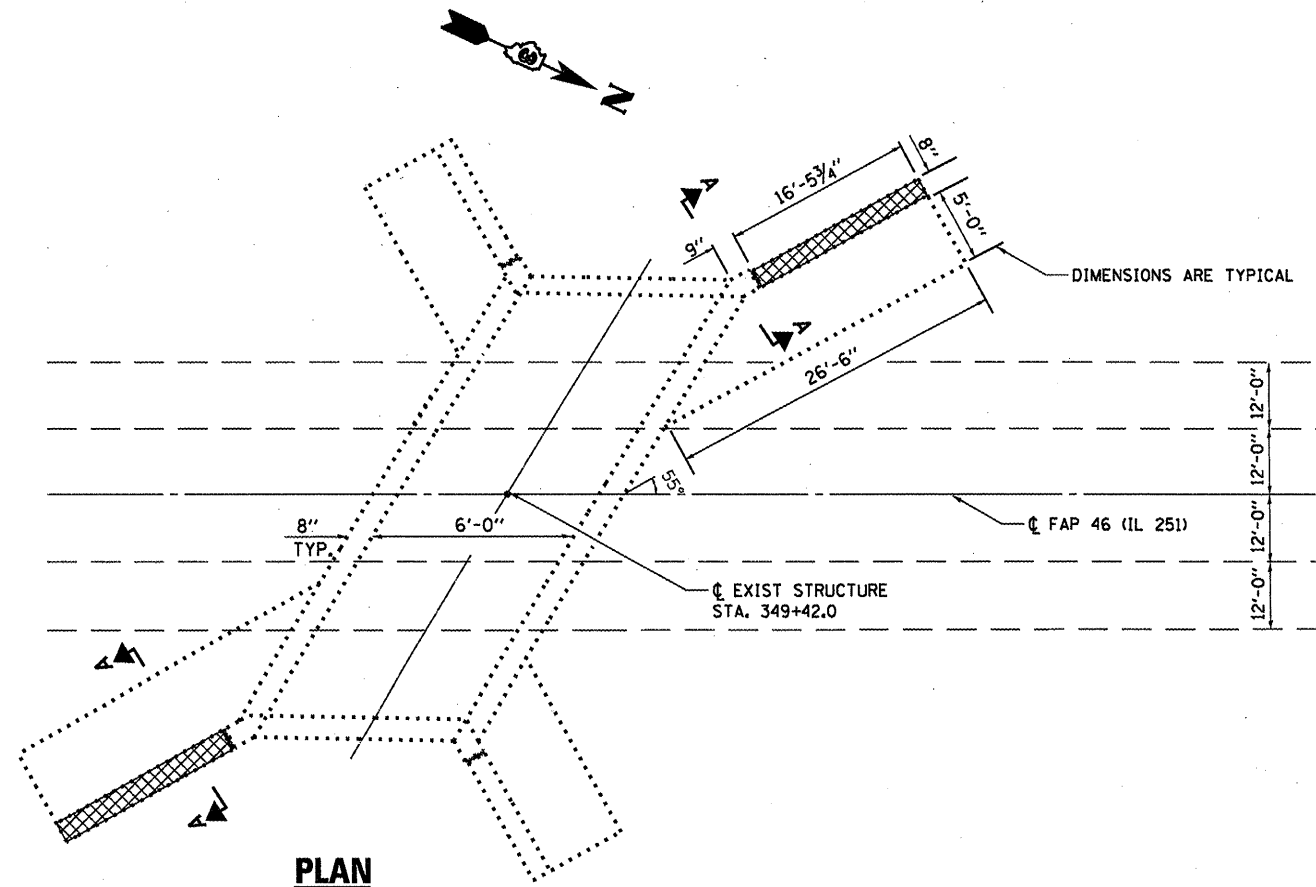
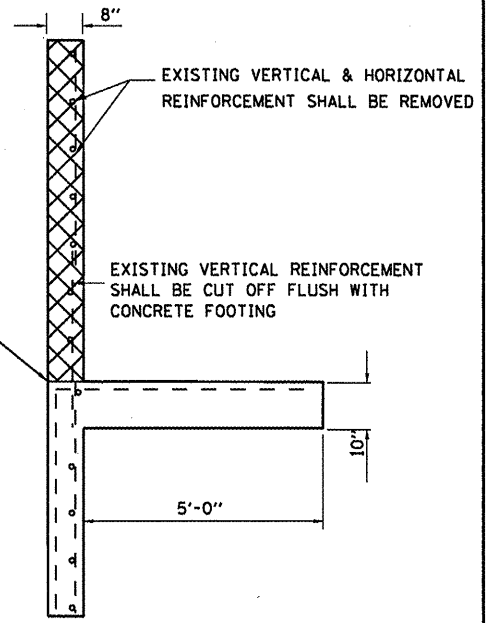


CONCRETE REMOVAL



NOTE: REMOVAL TO BE INCLUDED IN THE COST OF "CONCRETE REMOVAL"



SECTION A-A (TYP)

BILL OF MATERIAL

ITEM	UNIT	TOTAL
CONCRETE REMOVAL	CU YD	4.0

FILE NAME =	USER NAME = petelyj	DESIGNED - YOGESH PATEL	REVISED -
g:\pwork\pwidot\petelyj\0266589\036642-sheets.dgn		DRAWN - YOGESH PATEL	REVISED -
	PLOT SCALE = 100.0000' / 1"	CHECKED - RON WOODSHANK	REVISED -
	PLOT DATE = 12/27/2011	DATE -	REVISED -

STATE OF ILLINOIS
DEPARTMENT OF TRANSPORTATION

**CONCRETE REMOVAL DETAILS
FOR LOCATION 4: SN 050-2523**

SCALE: SHEET NO. 4 OF 5 SHEETS STA. TO STA.

F.A.P. RTE. VAR.	SECTION VARIOUS	COUNTY VARIOUS	TOTAL SHEETS 40	SHEET NO. 26
			CONTRACT NO. 66B42	
ILLINOIS FED. AID PROJECT				