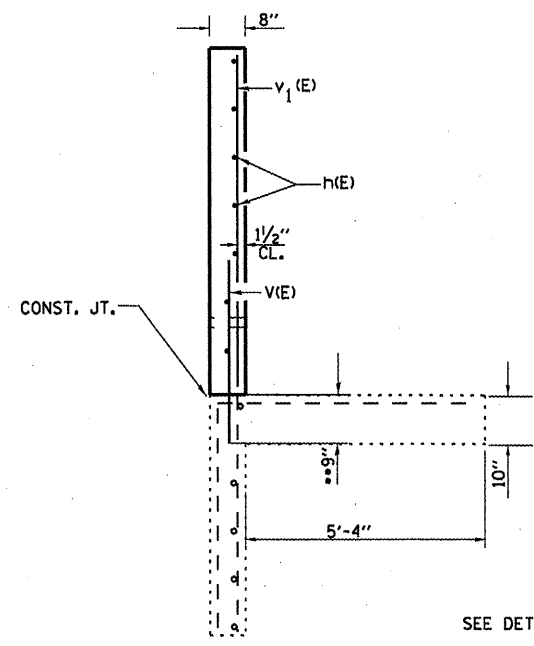
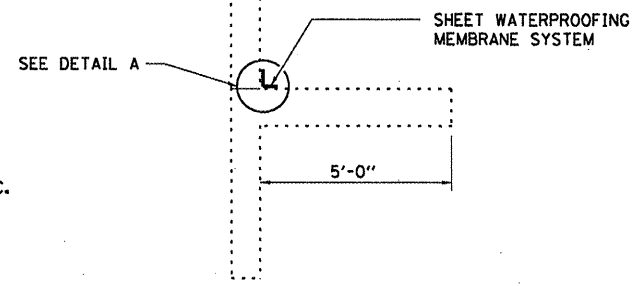


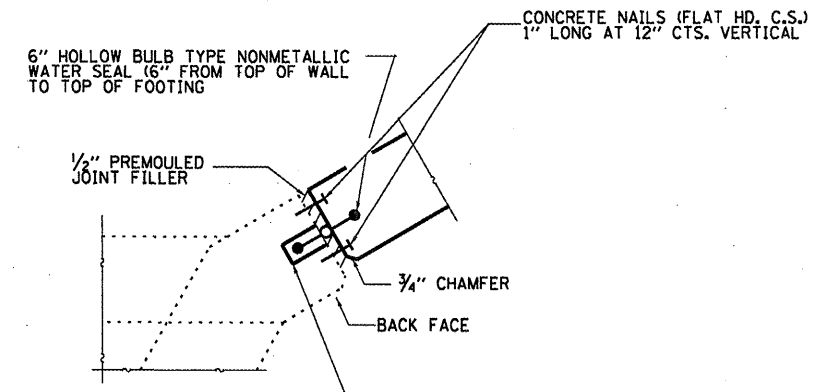
WING ELEVATION
 *ORDER v₁(E) BARS IN FULL LENGTH AND CUT IN FIELD TO FIT.



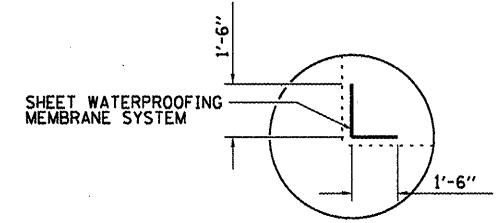
SECTION A-A
 ** DRILL & GROUT v(E) BARS INTO EXISTING CONCRETE FOOTING ACCORDING TO SECTION 584 OF THE STANDARD SPEC.



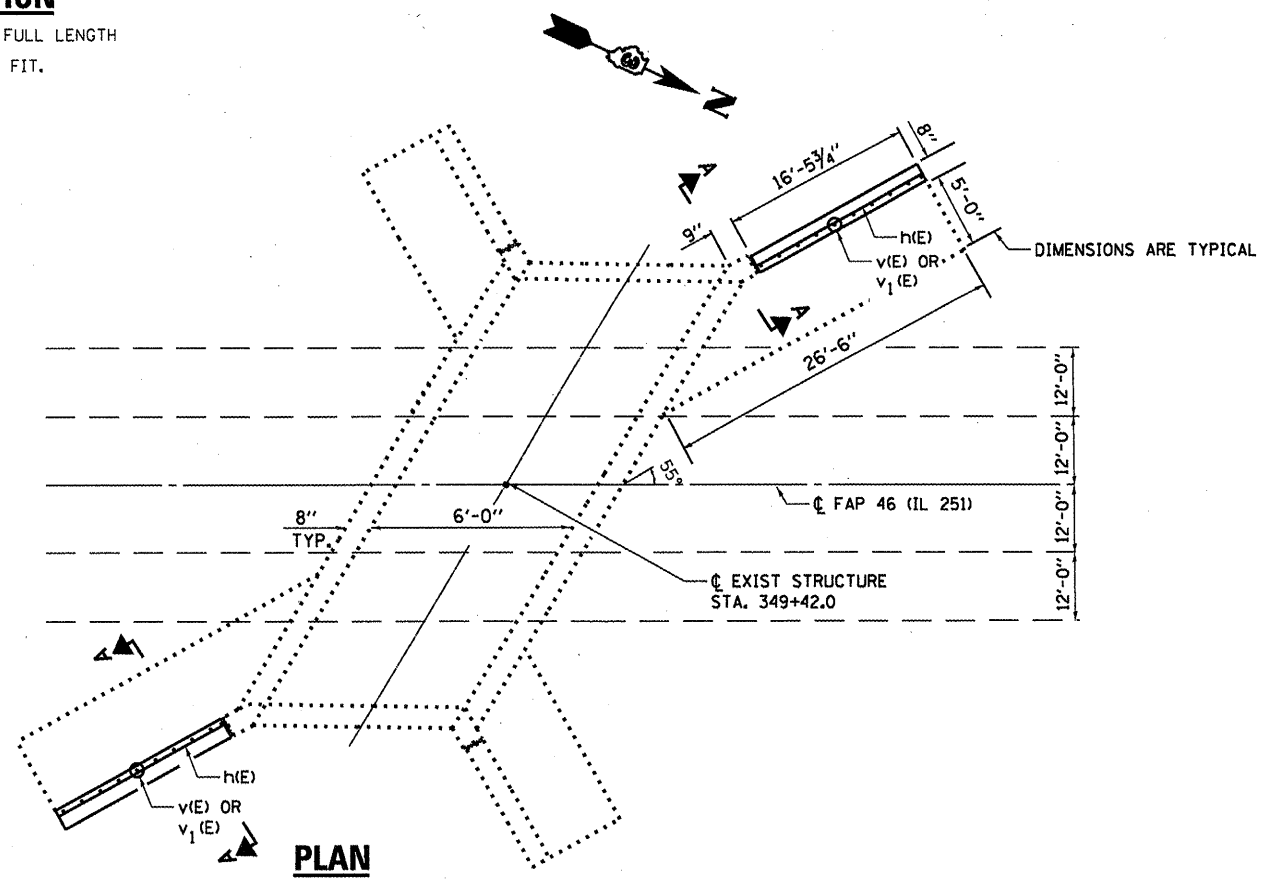
SECTION A-A
 SHEET WATERPROOFING MEMBRANE SYSTEM



CORNER DETAIL
 EPOXY NEW WATER SEAL INTO 2" WIDE SAWCUT GROOVE. EPOXY TO MEET THE REQUIREMENTS OF ASTM C881, TYPE III, GRADE 3. PRIME GROOVE WITH AN EPOXY MEETING ASTM C881, TYPE III, GRADE 1. COST INCLUDED WITH CONCRETE BOX CULVERTS.



DETAIL A



PLAN

BILL OF MATERIAL PER WING WALL

Bar	No.	Size	Length	Shape
h(E)	4	#5	16'-0"	—
v(E)	17	#6	3'-0"	—
v ₁ (E)	17	#4	6'-9"	—
Concrete Box Culverts			Cu. Yd.	2.0
Reinforcement Bars			Pound	220
Sheet Waterproofing Membrane System			Sq. Yd.	6.0

FILE NAME =	USER NAME = ppatelj	DESIGNED - YOGESH PATEL	REVISED -
cs:\pwork\pvidot\patelj\08266889\036642-sheets.dgn		DRAWN - YOGESH PATEL	REVISED -
	PLOT SCALE = 100.0000' / in.	CHECKED - RON WOODSHANK	REVISED -
	PLOT DATE = 12/27/2011	DATE -	REVISED -

STATE OF ILLINOIS
 DEPARTMENT OF TRANSPORTATION

RECONSTRUCTION DETAILS FOR LOCATION 4: SN 050-2523
 SCALE: SHEET NO. 5 OF 5 SHEETS STA. TO STA.

F.A.P. RTE.	SECTION	COUNTY	TOTAL SHEETS	SHEET NO.
VAR	VARIOUS	VARIOUS	40	27
			CONTRACT NO. 66B42	
(ILLINOIS) FED. AID PROJECT				