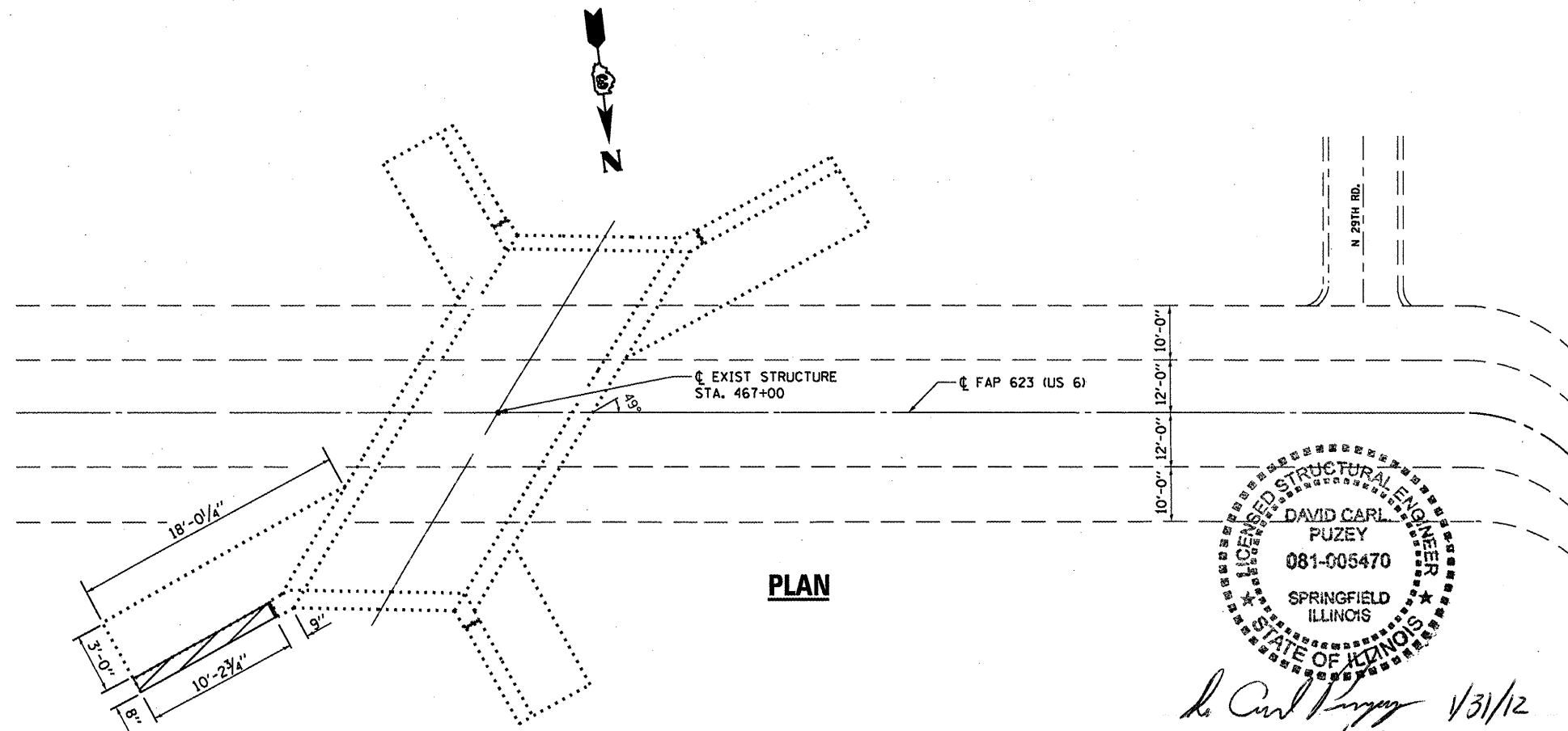


GENERAL NOTES

REINFORCEMENT BARS DESIGNATED (E) SHALL BE EPOXY COATED.
 WATERPROOFING MEMBRANE SHALL BE APPLIED TO THE DESIGNATED AREAS ON THE BACKSIDE OF THE WINGWALL AS DETAILED.

ELEVATION

 **DAMAGED WING WALL TO BE REPLACED**



PLAN

TOTAL BILL OF MATERIAL

ITEM	UNIT	TOTAL
STRUCTURE EXCAVATION	CU YD	9.0
FURNISHED EXCAVATION	CU YD	9.0
CONCRETE REMOVAL	CU YD	1.0
CONCRETE BOX CULVERTS	CU YD	1.0
REINFORCEMENT BARS (EPOXY COATED)	POUND	103.0
SHEET WATERPROOFING MEMBRANE SYSTEM	SQ YD	4.0

FILE NAME =	USER NAME = poteluj	DESIGNED - YOGESH PATEL	REVISED -
c:\pwork\pwork\poteluj\d0266509_036842-sheets.dgn		DRAWN - YOGESH PATEL	REVISED -
		CHECKED - RON WOODSHANK	REVISED -
		DATE -	REVISED -

STATE OF ILLINOIS
 DEPARTMENT OF TRANSPORTATION

**GENERAL PLAN AND ELEVATION
 FOR LOCATION 5: SN 050-2589**

F.A.P. RTE. VAR	SECTION	COUNTY	TOTAL SHEETS	SHEET NO.
	VARIOUS	VARIOUS	40	29
			CONTRACT NO. 66B42	
ILLINOIS FED. AID PROJECT				

SCALE: SHEET NO. 2 OF 5 SHEETS STA. TO STA.