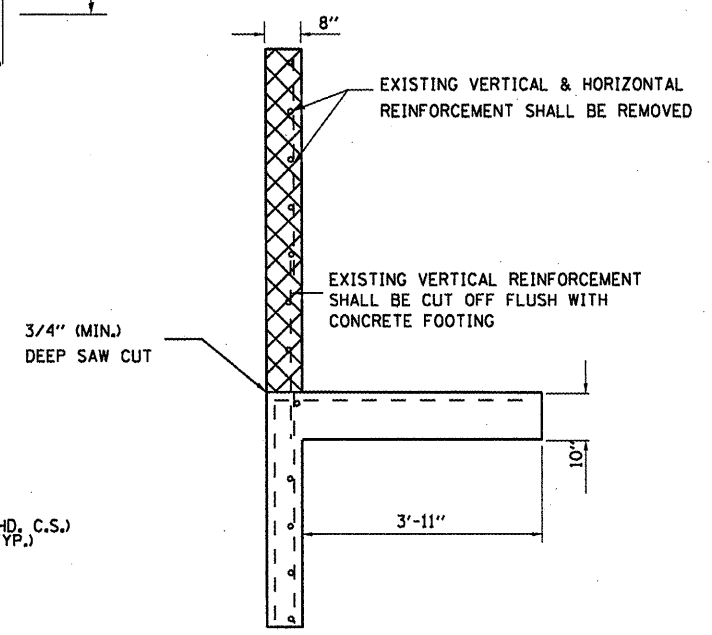
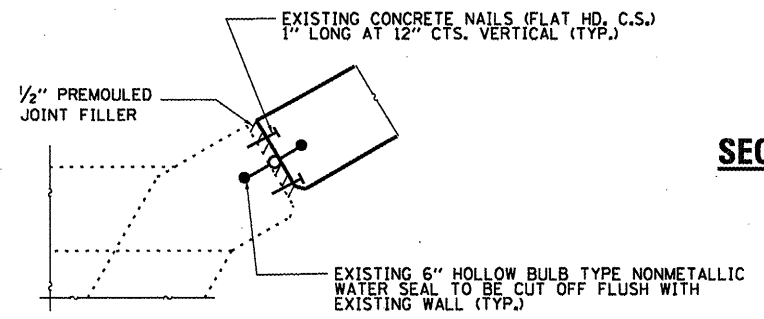


ELEVATION

 **CONCRETE REMOVAL**

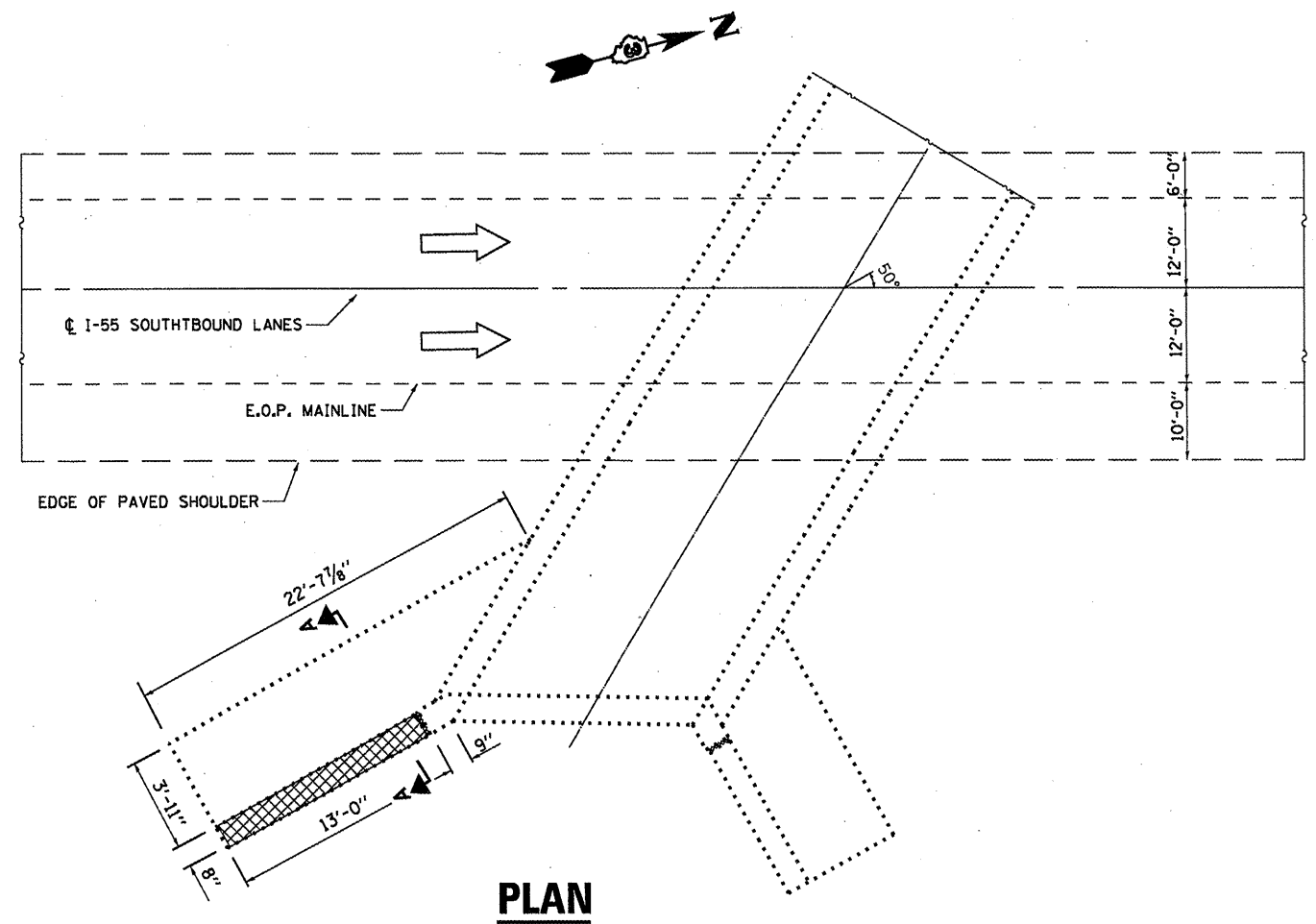


SECTION A-A (TYP)



CORNER DETAIL

NOTE: REMOVAL TO BE INCLUDED IN THE COST OF "CONCRETE REMOVAL"



PLAN

BILL OF MATERIAL

ITEM	UNIT	TOTAL
CONCRETE REMOVAL	CU YD	1.6

FILE NAME =	USER NAME = petelyj	DESIGNED - YOGESH PATEL	REVISED -
c:\pwork\pedit\petelyj\0266589\036642-sheets.dgn		DRAWN - YOGESH PATEL	REVISED -
	PLOT SCALE = 1/8" = 1'-0"	CHECKED - RON WOODSHANK	REVISED -
	PLOT DATE = 12/27/2011	DATE -	REVISED -

**STATE OF ILLINOIS
DEPARTMENT OF TRANSPORTATION**

**CONCRETE REMOVAL DETAILS
FOR LOCATION 6: SN 032-2519**

SCALE: _____ SHEET NO. 4 OF 5 SHEETS STA. _____ TO STA. _____

F.A.P. RTE. VAR	SECTION VARIOUS	COUNTY VARIOUS	TOTAL SHEETS 40	SHEET NO. 36
			CONTRACT NO. 66B42	
ILLINOIS FED. AID PROJECT				