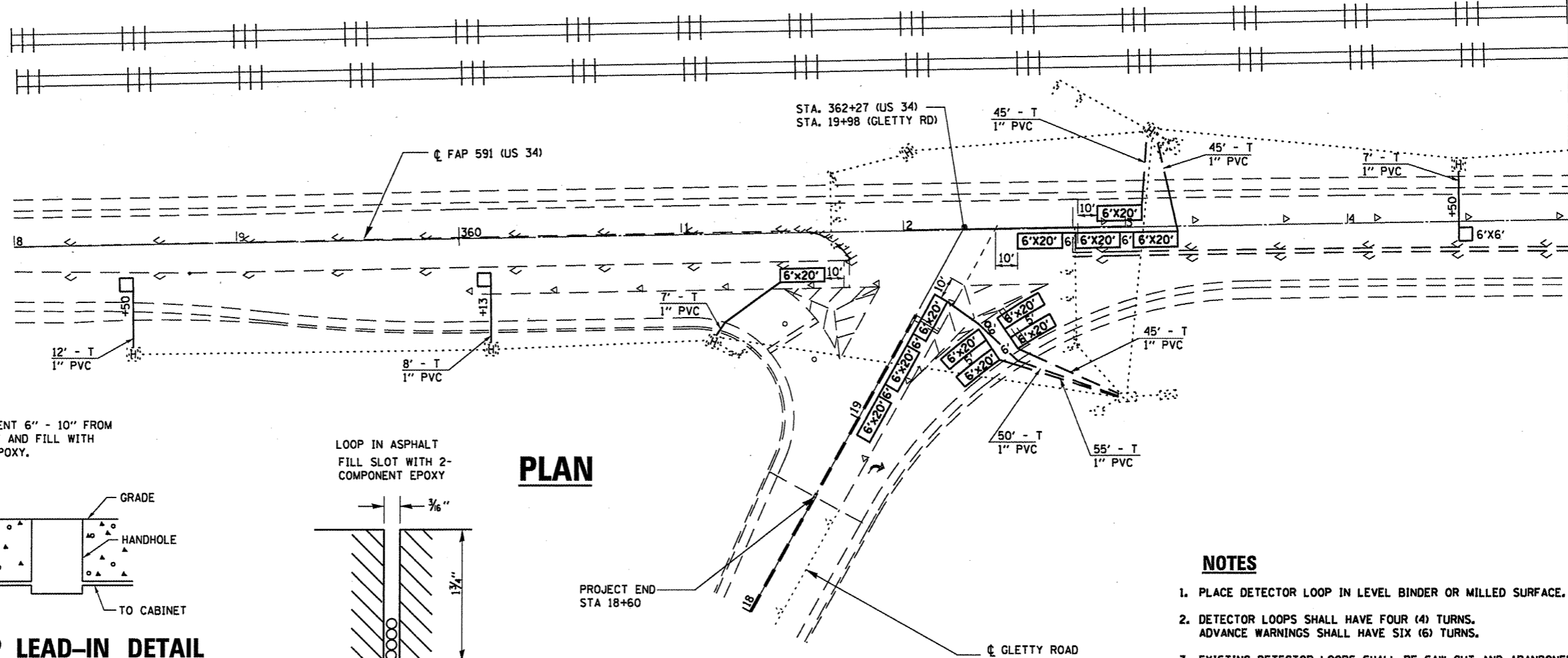
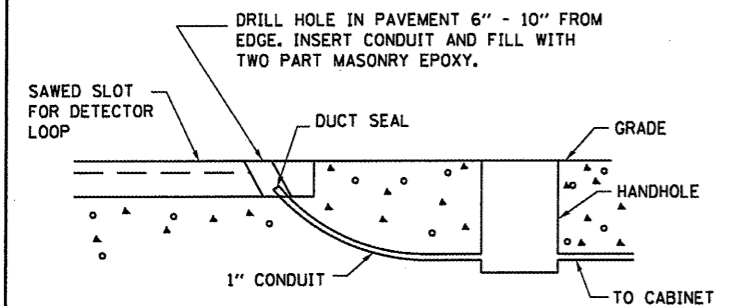


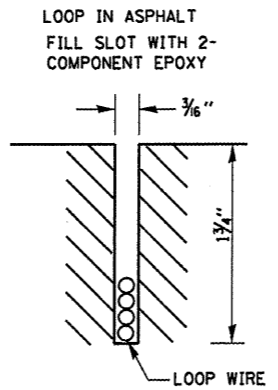
MATCH LINE STA. 365 + 00



PLAN



DETECTOR LOOP LEAD-IN DETAIL

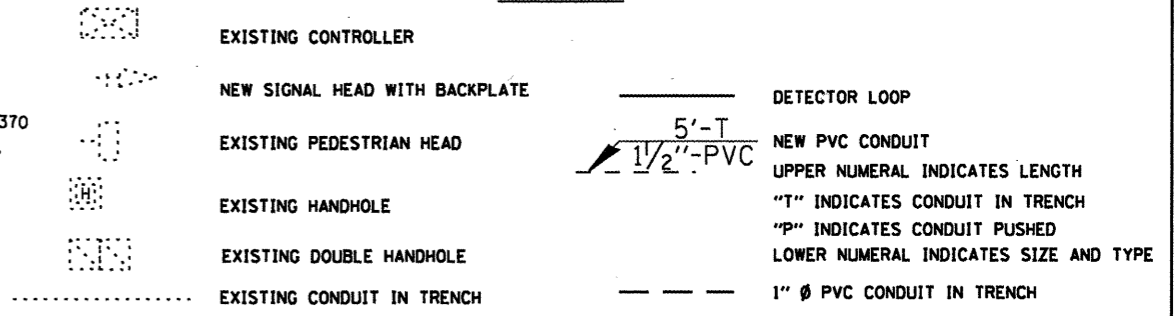


DETECTOR LOOP INSTALLATION

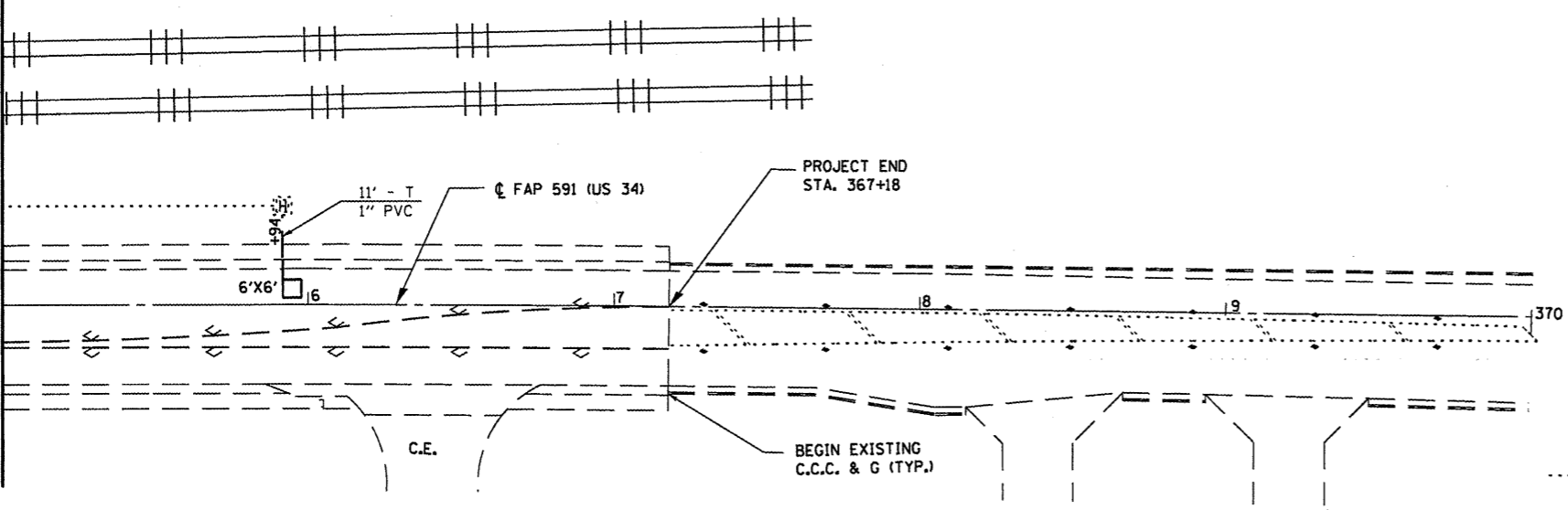
NOTES

1. PLACE DETECTOR LOOP IN LEVEL BINDER OR MILLED SURFACE.
2. DETECTOR LOOPS SHALL HAVE FOUR (4) TURNS. ADVANCE WARNINGS SHALL HAVE SIX (6) TURNS.
3. EXISTING DETECTOR LOOPS SHALL BE SAW CUT AND ABANDONED.
4. THE DEPARTMENT OF TRANSPORTATION (815-434-8506) SHALL BE NOTIFIED AT LEAST SEVENTY-TWO (72) HOURS PRIOR TO THE LAYOUT OF THE DETECTOR LOOP.
5. THE EXACT LOCATION OF ALL UTILITIES SHALL BE FIELD VERIFIED BY THE CONTRACTOR BEFORE ANY WORK IS STARTED.
6. EACH DETECTOR LOOP SHALL HAVE AN INDIVIDUAL CONDUIT STUB.
7. THE DETECTOR LOOP CABLE FROM THE END OF THE SAW CUT TO THE SPLICE IN THE HANDHOLE SHALL BE CONSIDERED INCLUDED IN THE COST OF THE DETECTOR LOOP.

LEGEND



MATCH LINE STA. 365 + 00



FILE NAME =	USER NAME = potelyj	DESIGNED - RON WOODSHANK	REVISED -	STATE OF ILLINOIS DEPARTMENT OF TRANSPORTATION	DETECTOR LOOPS	F.A.P. RTE. 591	SECTION D3 INTERMITTENT RS 2012-1	COUNTY DEKALB	TOTAL SHEETS 12	SHEET NO. 11		
ca:\pwr\work\pwidot\potelyj\11\03668\5-sht-details.dgn	PLOT SCALE = 100.0000' / in.	DRAWN - RON WOODSHANK	REVISED -			SCALE: _____	SHEET NO. 1 OF 1 SHEETS	STA. 351+58 TO STA. 367+18	ILLINOIS FED. AID PROJECT			
PLOT DATE = 12/22/2011	DATE -	CHECKED -	REVISED -									
CONTRACT NO. 66B45												