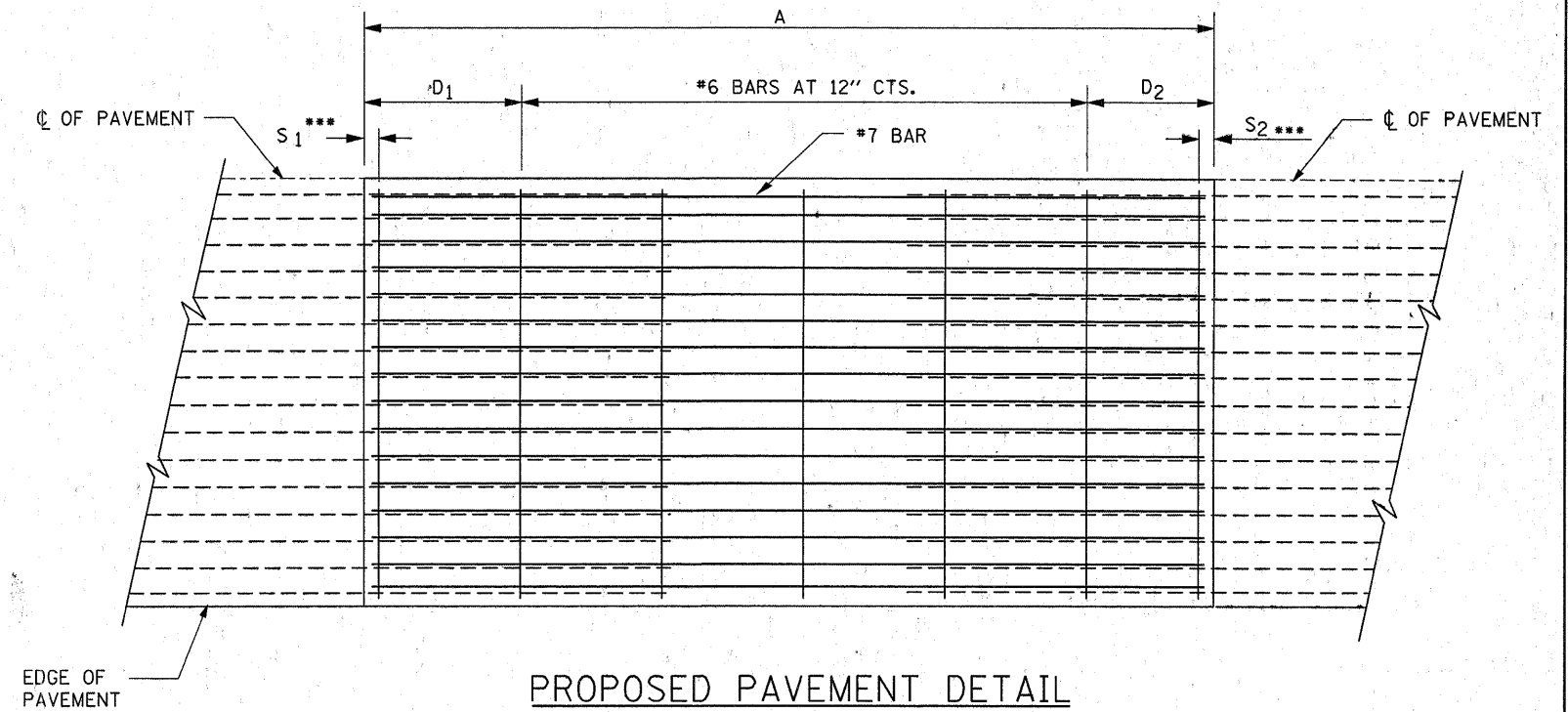
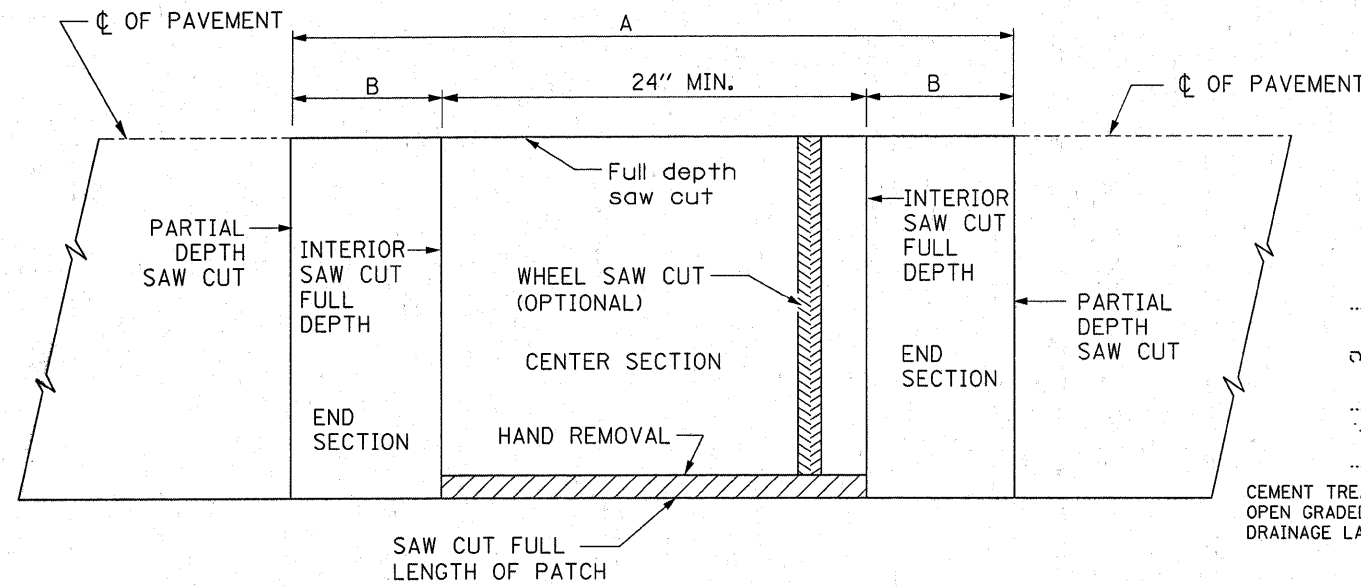


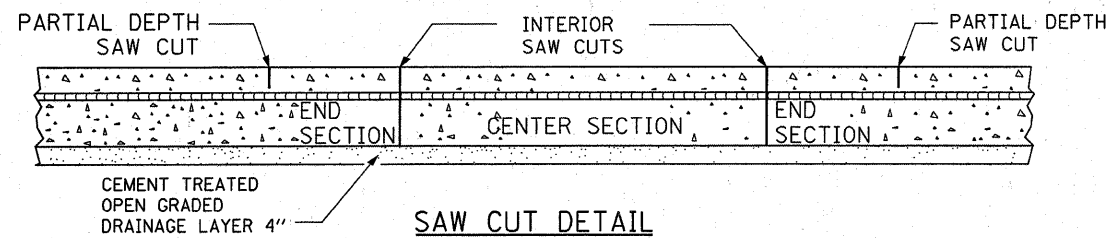
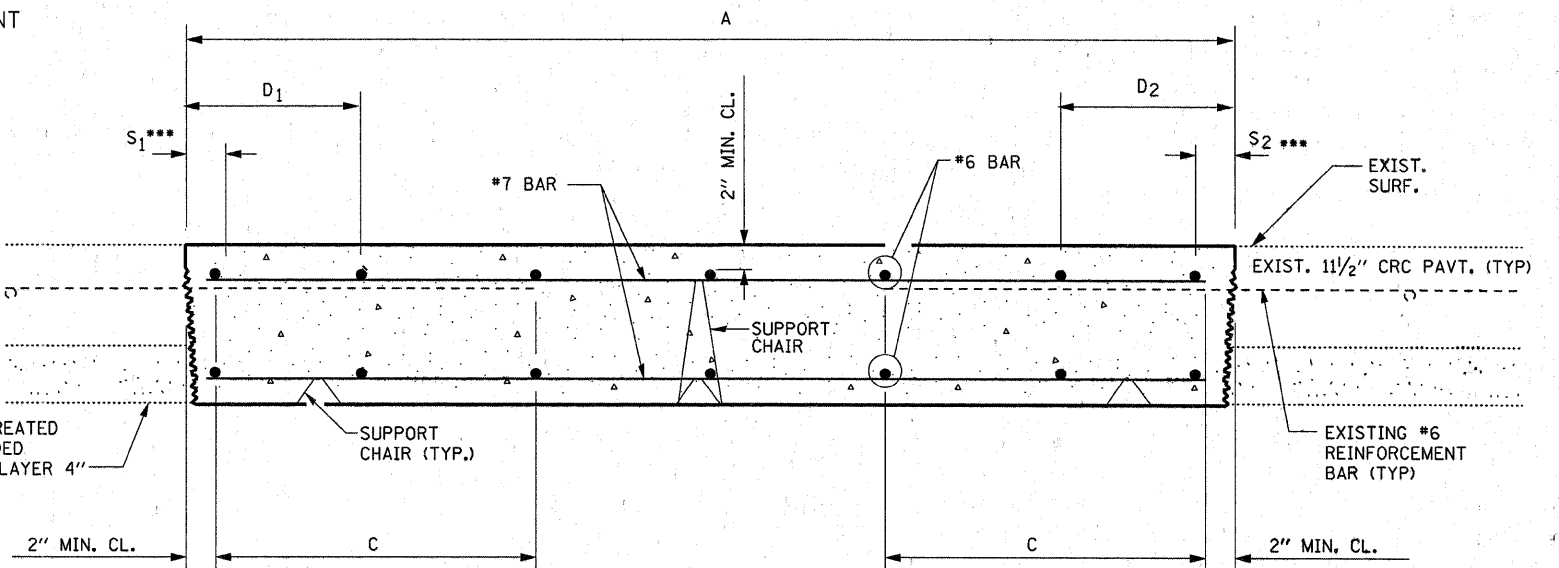
ALTERNATE SAWING DETAIL
(PCC SHOULDER)



PROPOSED PAVEMENT DETAIL
(AGAINST CONCRETE SHOULDER)



PAVEMENT SAWING DETAIL
(PCC SHOULDER)



SAW CUT DETAIL

EXISTING LONGITUDINAL REINFORCEMENT BARS	A (min.)	B (min.)	C (min.)
No. 7	6'-0"	28"	26"

NOTES:

- * EVERY 3rd INTERSECTION MUST BE TIED
- ** LAP NEW REINFORCEMENT WITH EXISTING LONGITUDINAL REINFORCEMENT
- *** VARIABLES: WHERE S₁ AND S₂ ARE 2 1/2" MIN. AND 12" MAX. D₁ = 2(S₁) AND D₂ = 2(S₂)

FILE NAME =	USER NAME = schwenkerg	DESIGNED -	REVISED - 2-7-12 RS
ca:\pw\work\p\idot\schenkerg\d0287178\066888-sht-details.dgn		DRAWN -	REVISED -
		CHECKED -	REVISED -
		DATE -	REVISED -

STATE OF ILLINOIS
DEPARTMENT OF TRANSPORTATION

CLASS A PATCHING DETAILS

REVISED 2-7-12 BY RS

F.A.I. RTE.	SECTION	COUNTY	TOTAL SHEETS	SHEET NO.
80	(32-2)-5	GRUNDY	9	7
			CONTRACT NO. 66B88	
ILLINOIS FED. AID PROJECT				

SCALE: SHEET NO. OF SHEETS STA. TO STA.