

STATE OF ILLINOIS
DEPARTMENT OF TRANSPORTATION
DIVISION OF HIGHWAYS
PROPOSED
HIGHWAY PLANS

FAI ROUTE 80 (I-80)
SECTION (32-2)I-5

CONCRETE PATCHING
GRUNDY COUNTY

F.A.I. RTE.	SECTION	COUNTY	TOTAL SHEETS	SHEET NO.
80	(32-2)I-5	GRUNDY	9	1
		ILLINOIS	CONTRACT NO. 66B88	

INDEX OF SHEETS

- 1 COVER SHEET
- 2 GENERAL NOTES
- 3 SUMMARY OF QUANTITIES
- 4 TYPICAL SECTION
- 5 SCHEDULE
- 6 SCHEMATIC
- 7-9 DETAILS

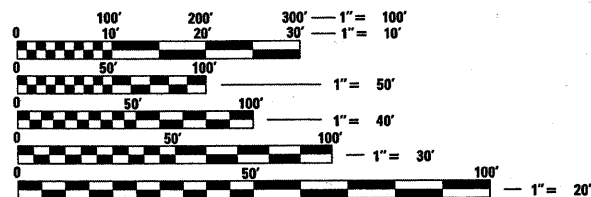
STANDARDS

- 000001-06 STANDARD SYMBOLS, ABBREVIATIONS AND PATTERNS
- 001001-02 AREAS OF REINFORCEMENT BARS
- 001006 DECIMAL OF AN INCH AND OF A FOOT
- 442001-04 CLASS A PATCHES
- 701101-02 OFF-ROAD OPERATIONS MULTILANE, 15' (4.5 m) TO 24" (600 mm) FROM PAVEMENT EDGE
- 701400-05 APPROACH TO LANE CLOSURE, FREEWAY/EXPRESSWAY
- 701401-06 LANE CLOSURE, FREEWAY/EXPRESSWAY
- 701426-04 LANE CLOSURE, MULTILANE INTERMITTENT OR MOVING OPERATION, FOR SPEEDS ≥ 45 MPH
- 701901-02 TRAFFIC CONTROL DEVICES

C-93-058-12

BEGIN PROJECT
2 MILES WEST OF IL 47

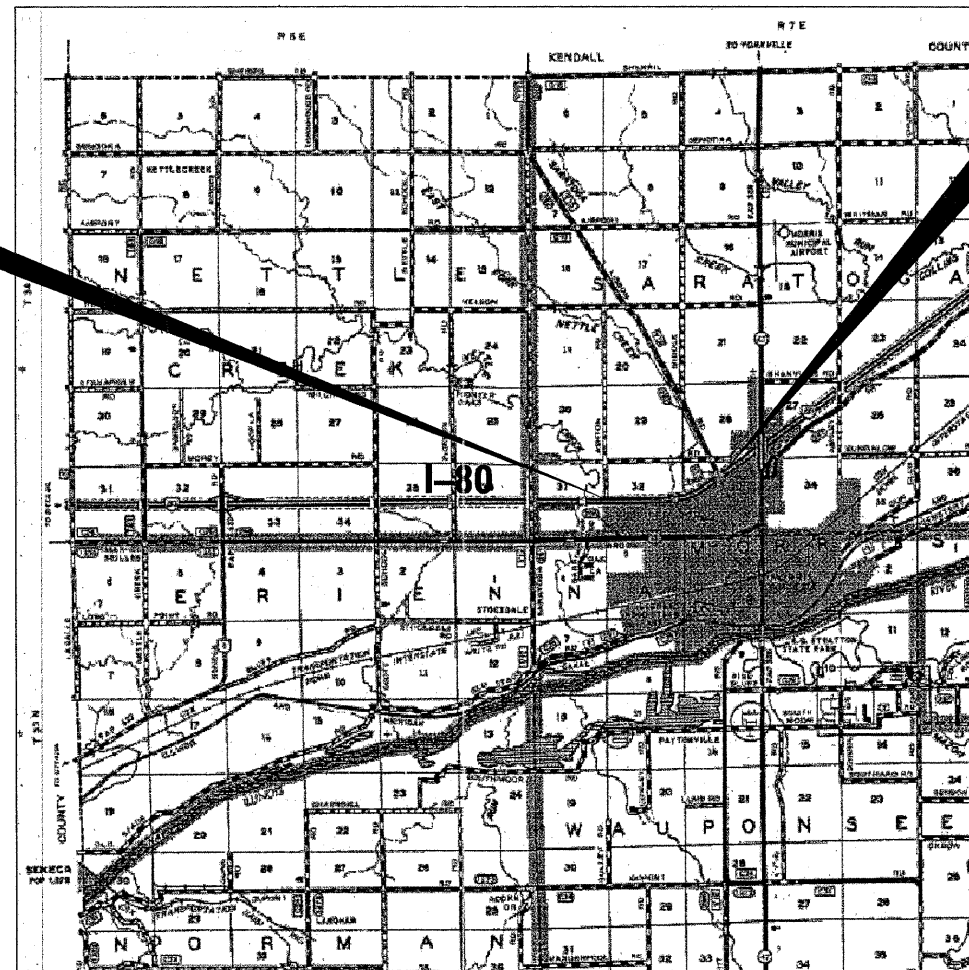
END PROJECT
0.5 MILE WEST OF IL 47



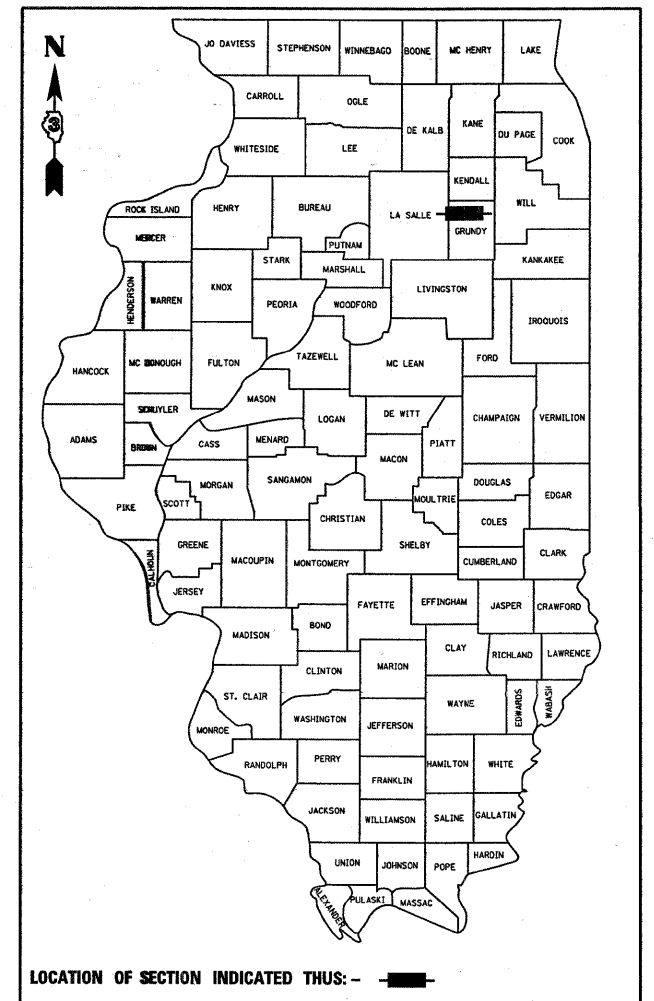
FULL SIZE PLANS HAVE BEEN PREPARED USING STANDARD ENGINEERING SCALES. REDUCED SIZED PLANS WILL NOT CONFORM TO STANDARD SCALES. IN MAKING MEASUREMENTS ON REDUCED PLANS, THE ABOVE SCALES MAY BE USED.

J.U.L.I.E.
 JOINT UTILITY LOCATION INFORMATION FOR EXCAVATION
 1-800-892-0123
 OR 811

DISTRICT 3 NO. (815) 434-6131
PROJECT ENGINEER: CRAIG REED, P.E.
UNIT CHIEF: RUTH SCHWANKE
TOWNSHIP(S): SARATOGA
CONTRACT NO. 66B88



GROSS LENGTH = 7920 FT. = 1.5 MILE
 NET LENGTH = 2851.2 FT. = .54 MILE



FUNCTIONAL CLASSIFICATION
INTERSTATE

2011 ADT = 28,100
 P.V. = 66.8% S.U. = 4.4% M.U. = 28.8%

STATE OF ILLINOIS
 DEPARTMENT OF TRANSPORTATION
 DIVISION OF HIGHWAYS

SUBMITTED Dec 27 20 11
Eric S. Marksdorfer
 DEPUTY DIRECTOR OF HIGHWAYS, REGION ENGINEER

February 3 20 12
John D. Baranzelli P.E.
 acting ENGINEER OF DESIGN AND ENVIRONMENT

February 3 20 12
William R. Freyler
 acting DIRECTOR OF HIGHWAYS, CHIEF ENGINEER

PRINTED BY THE AUTHORITY
OF THE STATE OF ILLINOIS

GENERAL NOTES

PLAN DIMENSIONS AND DETAILS RELATIVE TO EXISTING PLANS ARE SUBJECT TO NOMINAL CONSTRUCTION VARIATIONS. THE CONTRACTOR SHALL FIELD VERIFY EXISTING DIMENSIONS AND DETAILS AFFECTING NEW CONSTRUCTION AND MAKE NECESSARY APPROVED ADJUSTMENTS PRIOR TO CONSTRUCTION OR ORDERING OF MATERIALS. SUCH VARIATIONS SHALL NOT BE CAUSE FOR ADDITIONAL COMPENSATION FOR A CHANGE IN SCOPE OF WORK; HOWEVER, THE CONTRACTOR WILL BE PAID FOR THE QUANTITY ACTUALLY FURNISHED AT THE UNIT PRICE BID FOR THE WORK.

REINFORCEMENT BARS SHALL CONFORM TO THE REQUIREMENTS OF ASTM A 705 GR. 60. SEE SPECIAL PROVISIONS.

REINFORCEMENT BARS DESIGNATED (E) SHALL BE EPOXY COATED.

EXISTING REINFORCEMENT BARS EXTENDING INTO THE REMOVAL AREA SHALL BE CLEANED, STRAIGHTENED AND INCORPORATED INTO THE NEW CONSTRUCTION. ANY REINFORCEMENT BARS THAT ARE DAMAGED DURING CONCRETE REMOVAL SHALL BE REPLACED WITH AN APPROVED BAR SPLICER OR ANCHORAGE SYSTEM. COST INCLUDED WITH CONCRETE REMOVAL.

FOR STABILIZATION, ALL TYPE III BARRICADES SHALL REQUIRE A MINIMUM OF FOUR SAND BAGS PER BARRICADE.

ABANDONED UNDERGROUND UTILITIES THAT CONFLICT WITH CONSTRUCTION SHALL BE DISPOSED OF OUTSIDE THE LIMITS OF THE RIGHT OF WAY ACCORDING TO ARTICLE 202.03 OF THE STANDARD SPECIFICATIONS AND AS DIRECTED BY THE ENGINEER. THIS WORK WILL NOT BE PAID FOR SEPARATELY, BUT SHALL BE INCLUDED IN THE COST OF EARTH EXCAVATION.

ANY REFERENCE TO A STANDARD IN THESE PLANS SHALL BE INTERPRETED TO MEAN THE EDITION AS INDICATED BY THE SUBNUMBER SHOWN IN THE LIST OF STANDARDS OR THE COPY INCLUDED IN THESE PLANS.

THE CONTRACTOR SHALL CONTACT JULIE AT LEAST 48 HOURS PRIOR TO EXCAVATION TO DETERMINE WHICH UTILITIES ARE IN THE AREA.

STATE OF ILLINOIS
DEPARTMENT OF TRANSPORTATION
DISTRICT THREE

PREPARED BY: Don Bonnell
DISTRICT STUDIES & PLANS ENGINEER

DATE: 12-22-11

EXAMINED BY: Herb Cunningham
DISTRICT CONSTRUCTION ENGINEER

Steve J. Phillips
DISTRICT MATERIALS ENGINEER

Bruce A. Ducken
DISTRICT OPERATIONS ENGINEER

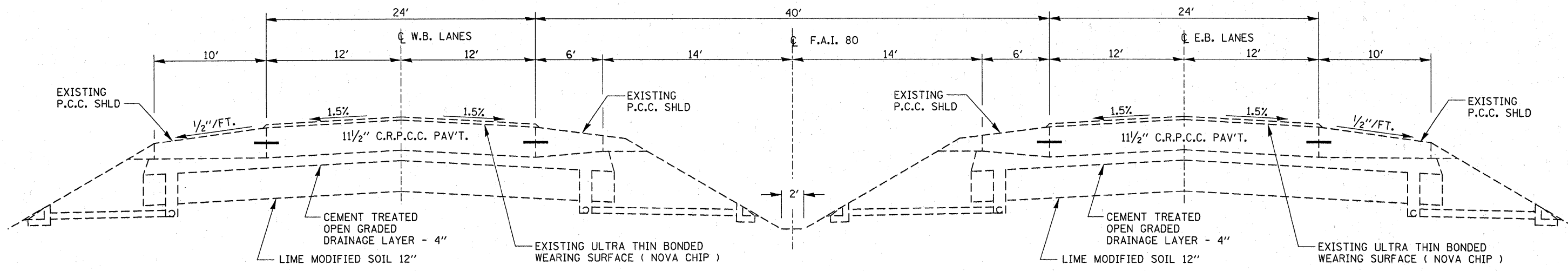
FILE NAME =	USER NAME = schwanerg	DESIGNED -	REVISED -	STATE OF ILLINOIS DEPARTMENT OF TRANSPORTATION	GENERAL NOTES	F.A.I. RTE.	SECTION	COUNTY	TOTAL SHEETS	SHEET NO.
c:\pwwork\pwwork\schwanerg\d0287178\066888-ahf-cover.dgn	DRAWN -	REVISED -	80			(32-2)I-5	GRUNDY	9	2	
PLOT SCALE = 50.0000' / in.	CHECKED -	REVISED -	CONTRACT NO. 66B88							
PLOT DATE = 12/21/2011	DATE -	REVISED -	SCALE:			SHEET NO.	OF SHEETS	STA.	TO STA.	ILLINOIS FED. AID PROJECT

0004
CONSTR. CODE
STATE
100%
ROADWAY
0005
RURAL

CODE NO.	ITEM	UNIT	TOTAL QUANTITY	
44200645	CLASS A PATCHES, TYPE II, 16 INCH	SQ YD	46	46
44200646	CLASS A PATCHES, TYPE III, 16 INCH	SQ YD	44	44
44213000	PATCHING REINFORCEMENT	SQ YD	180	180
44213200	SAW CUTS	FOOT	472	472
70103815	TRAFFIC CONTROL SURVEILLANCE	CAL DA	16	16
70200100	NIGHTTIME WORK ZONE LIGHTING	L SUM	1	1
* 78005110	EPOXY PAVEMENT MARKING - LINE 4"	FOOT	68	68
* 78005130	EPOXY PAVEMENT MARKING - LINE 6"	FOOT	30	30
67100100	MOBILIZATION	L SUM	1	1
X7010805	TRAFFIC CONTROL AND PROTECTION, STANDARD 701401 (SPECIAL)	L SUM	1	1
X0326880	MESSAGE BOARD VEHICLE DRIVER	HOUR	360	360
X0326907	PORTABLE, VEHICLE MOUNTED, CHANGEABLE MESSAGE SIGN	CAL MO	0.75	0.75

* SPECIALTY ITEM

Rev.



WESTBOUND LANES

EXISTING TYPICAL SECTION

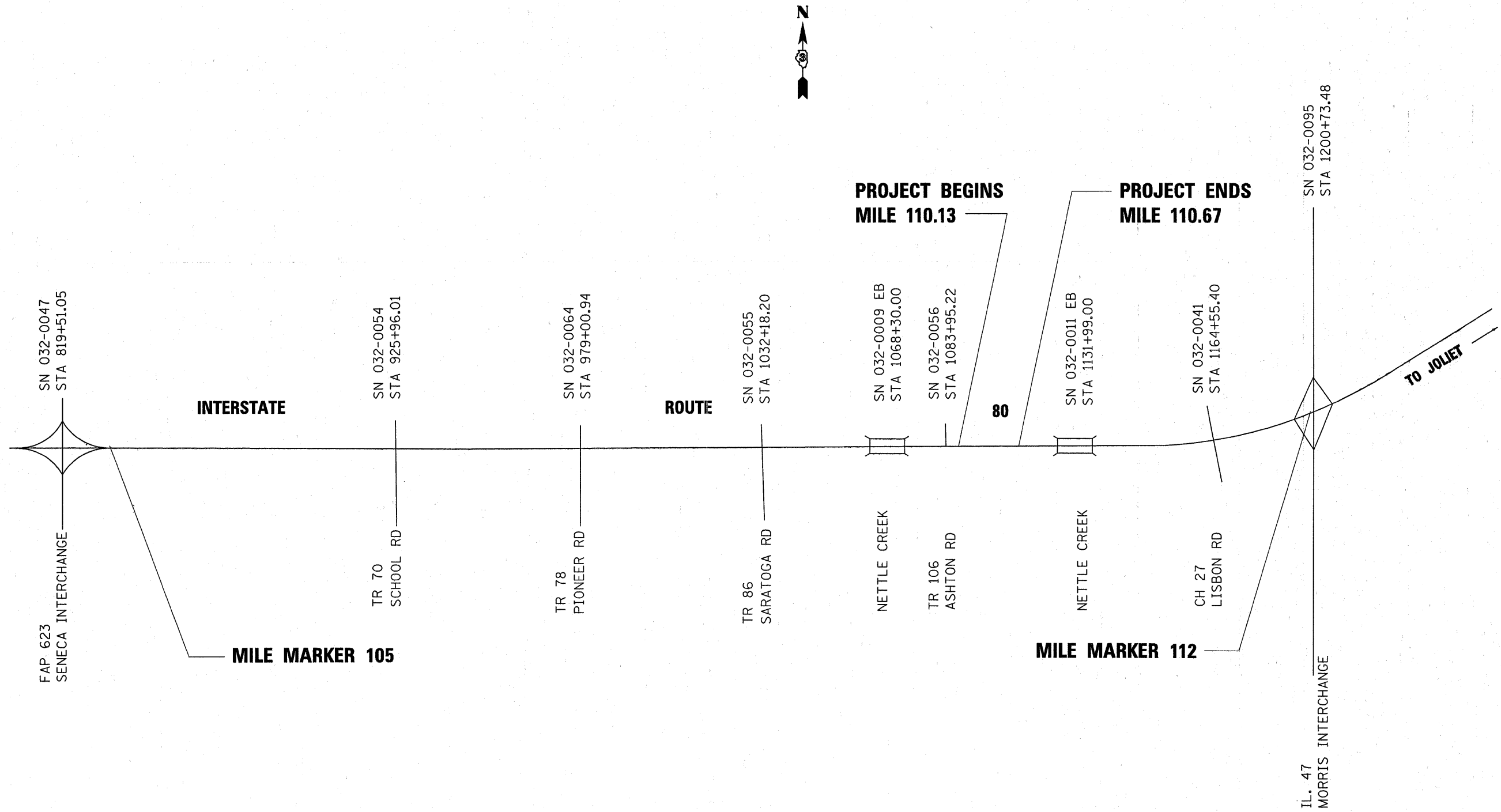
EASTBOUND LANES

FILE NAME =	USER NAME = schwenkerg	DESIGNED -	REVISED -	STATE OF ILLINOIS DEPARTMENT OF TRANSPORTATION	TYPICAL SECTIONS				F.A.I. RTE.	SECTION	COUNTY	TOTAL SHEETS	SHEET NO.
c:\pwork\pwork\dot\schwenkerg\d\287178\066B88-sht-details.dgn	66B88-sht-details.dgn	DRAWN -	REVISED -		80	(32-2)-5	GRUNDY	9	4				
PLOT SCALE = 50.0000' / in.		CHECKED -	REVISED -		CONTRACT NO. 66B88								
PLOT DATE = 12/21/2011		DATE -	REVISED -		ILLINOIS FED. AID PROJECT								
				SCALE:	SHEET NO. OF SHEETS	STA. TO STA.							

CLASS "A" PATCHING

LOCATION BY MILE POST	EASTBOUND	WESTBOUND	CLASS A PATCHING		PATCH REINF. SQ YD	SAW CUTS FOOT
	DRIVING LANE FOOT	DRIVING LANE FOOT	TYPE II SQ YD	TYPE III SQ YD		
110.13	6		8		16	60
110.33	6		8		16	60
110.36	7		9		18	62
110.40		10	13		26	68
110.41	18			24	48	84
110.54	6		8		16	60
110.67	15			20	40	78
TOTALS			46	44	180	472

FILE NAME =	USER NAME = schwankeg	DESIGNED -	REVISED - 2-7-12 RS	STATE OF ILLINOIS DEPARTMENT OF TRANSPORTATION	SCHEDULES			F.A.I. RTE.	SECTION	COUNTY	TOTAL SHEETS	SHEET NO.
c:\pw\work\pwidot\schwankeg\d0207178\	66888-sht-details.dgn	DRAWN -	REVISED -		80	(32-2)I-5	GRUNDY	9	5			
	PLOT SCALE = 50,0000' / in.	CHECKED -	REVISED -		REVISED 2-7-12 BY RS			CONTRACT NO. 66888				
	PLOT DATE = 2/7/2012	DATE -	REVISED -		SCALE:	SHEET NO. OF SHEETS	STA. TO STA.	ILLINOIS FED. AID PROJECT				



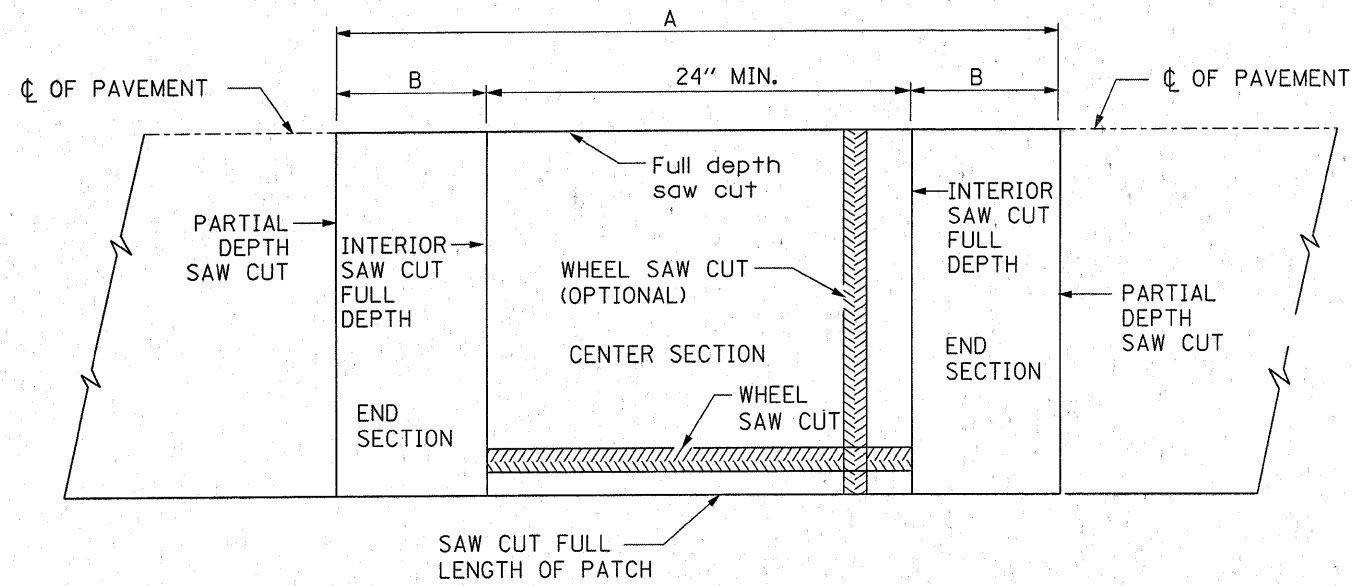
FILE NAME =	USER NAME = schwanerg	DESIGNED -	REVISED -
c:\pwork\pwork\schwanerg\d0287178\066888-ahd-deta1.dgn		DRAWN -	REVISED -
		CHECKED -	REVISED -
		DATE -	REVISED -

**STATE OF ILLINOIS
DEPARTMENT OF TRANSPORTATION**

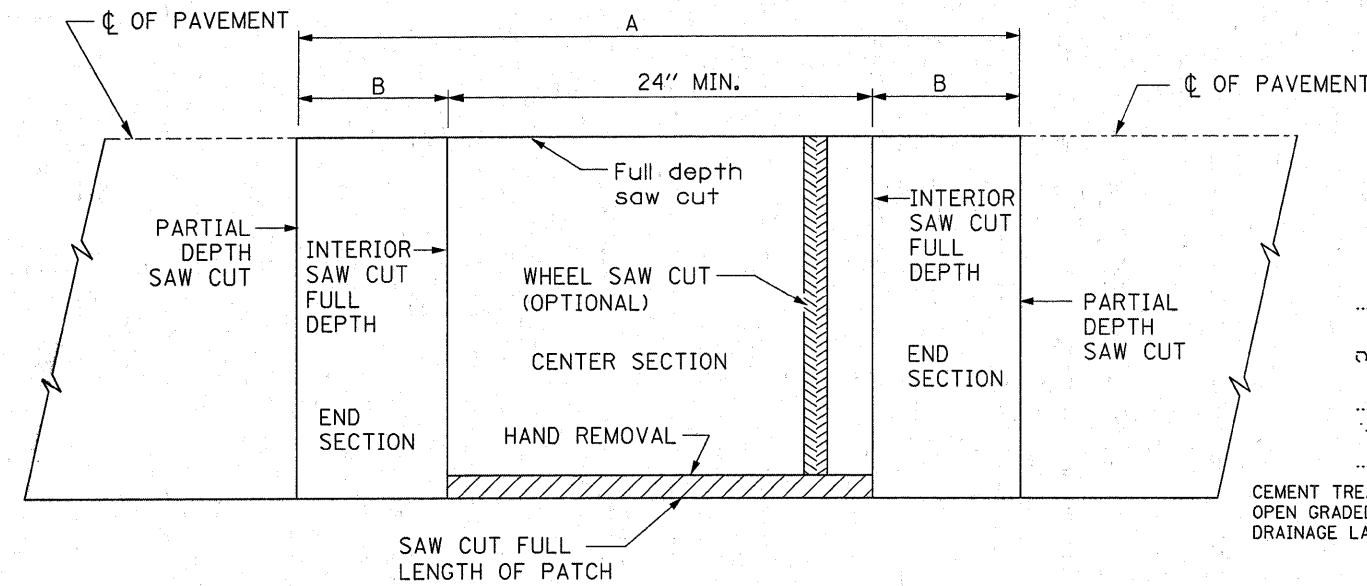
PROJECT LAYOUT PLAN VIEW

SCALE:	SHEET NO.	OF	SHEETS	STA.	TO STA.
--------	-----------	----	--------	------	---------

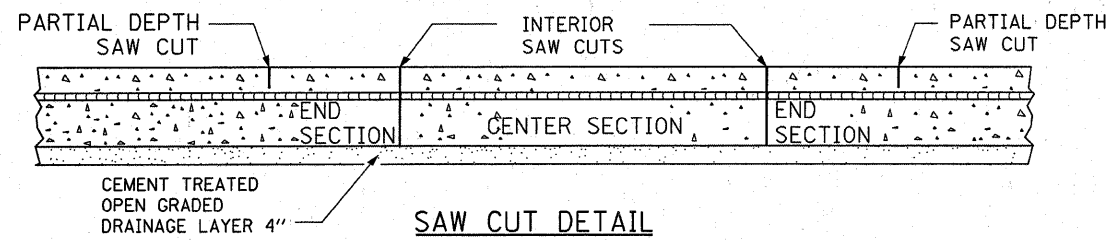
F.A.I. RTE.	SECTION	COUNTY	TOTAL SHEETS	SHEET NO.
80	(32-2)1-5	GRUNDY	9	6
CONTRACT NO. 66B88				
ILLINOIS FED. AID PROJECT				



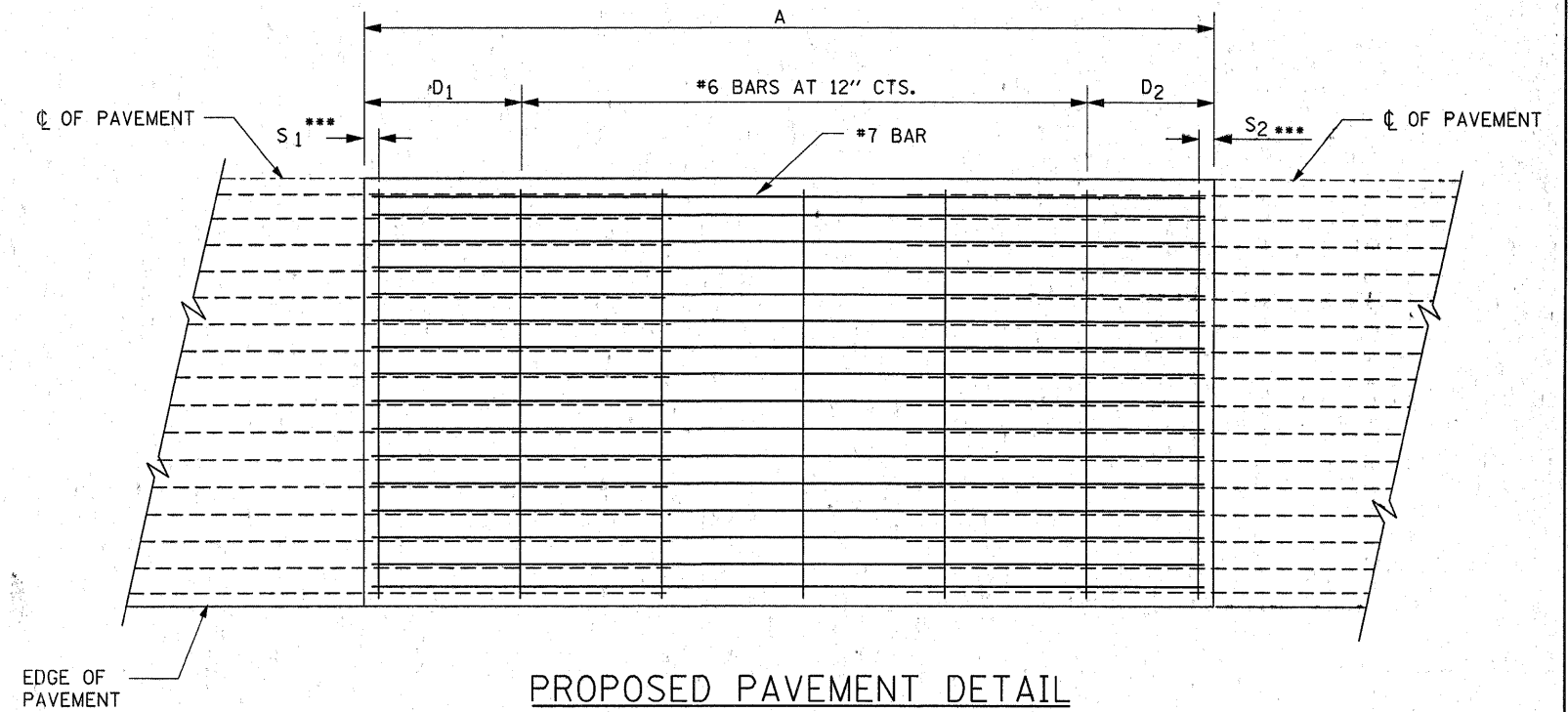
ALTERNATE SAWING DETAIL
(PCC SHOULDER)



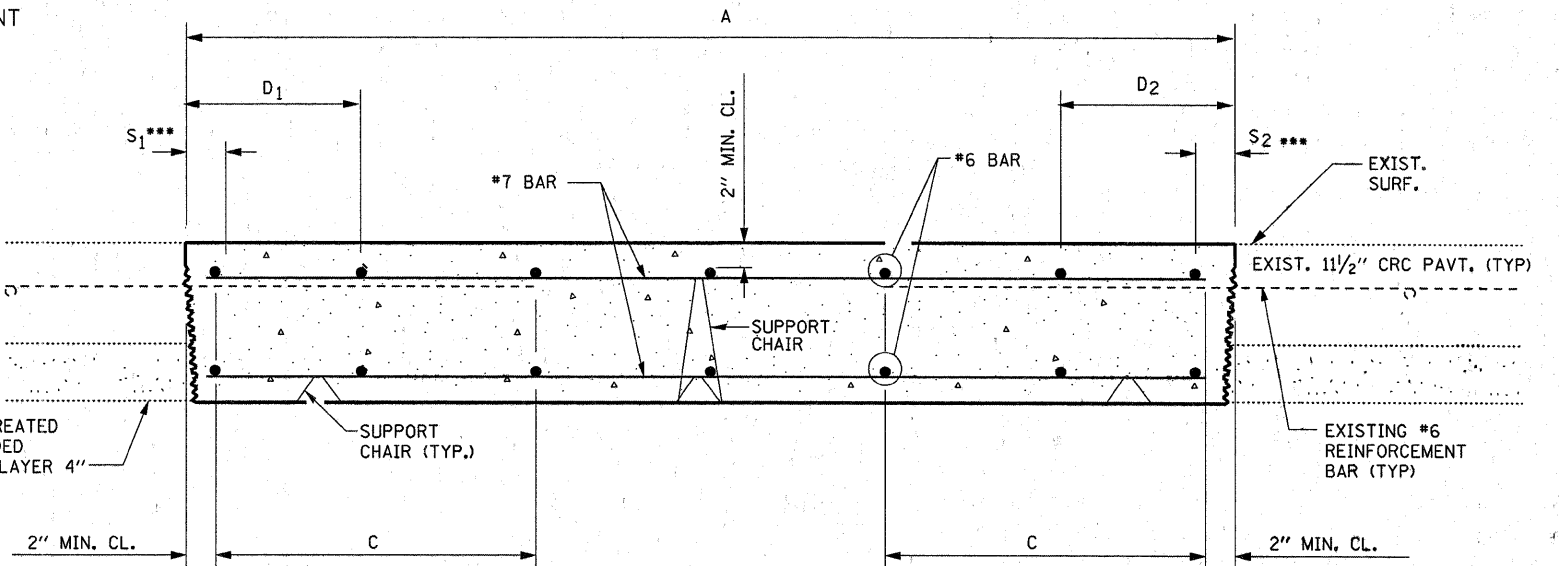
PAVEMENT SAWING DETAIL
(PCC SHOULDER)



SAW CUT DETAIL



PROPOSED PAVEMENT DETAIL
(AGAINST CONCRETE SHOULDER)



EXISTING LONGITUDINAL REINFORCEMENT BARS	A (min.)	B (min.)	C (min.)
No. 7	6'-0"	28"	26"

NOTES:

- * EVERY 3rd INTERSECTION MUST BE TIED
- ** LAP NEW REINFORCEMENT WITH EXISTING LONGITUDINAL REINFORCEMENT
- *** VARIABLES: WHERE S₁ AND S₂ ARE 2 1/2" MIN. AND 12" MAX. D₁ = 2(S₁) AND D₂ = 2(S₂)

FILE NAME =	USER NAME = schwankerg	DESIGNED -	REVISED - 2-7-12 RS
ca:\pw\work\p\dot\schwankerg\d0287178\066888-sht-details.dgn	66888-sht-details.dgn	DRAWN -	REVISED -
	PLOT SCALE = 50.0000' / in.	CHECKED -	REVISED -
	PLOT DATE = 2/7/2012	DATE -	REVISED -

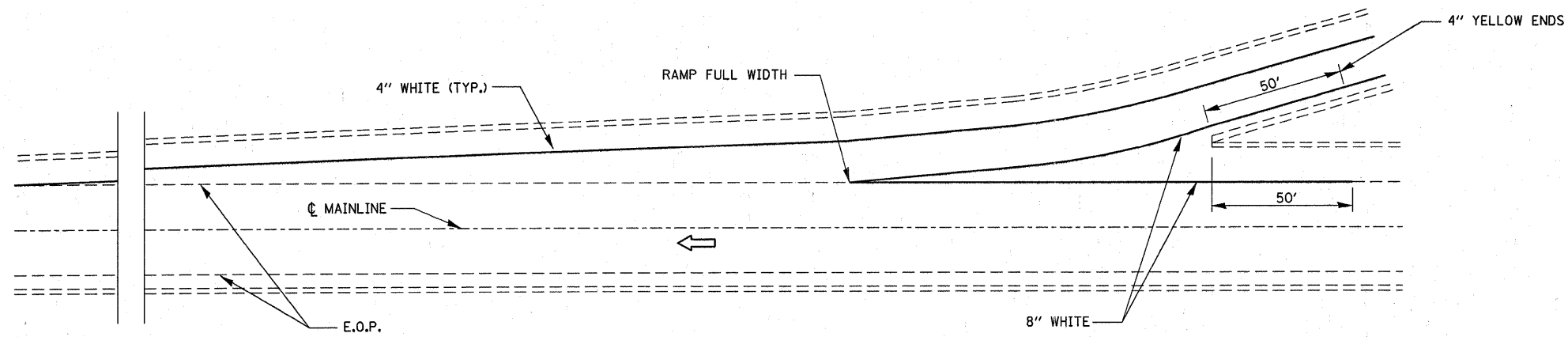
STATE OF ILLINOIS
DEPARTMENT OF TRANSPORTATION

CLASS A PATCHING DETAILS

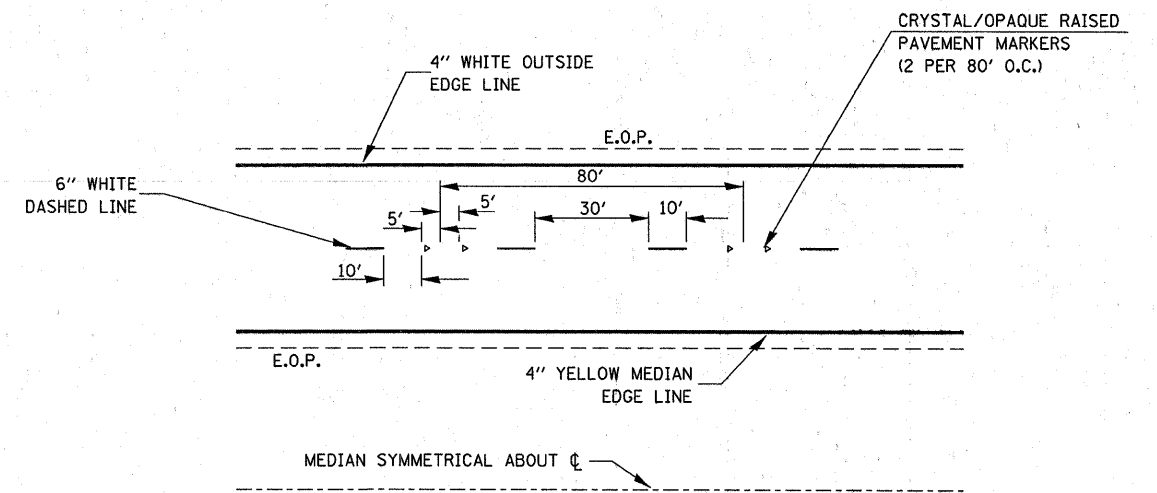
REVISED 2-7-12 BY RS

F.A.I. RTE.	SECTION	COUNTY	TOTAL SHEETS	SHEET NO.
80	(32-2)-5	GRUNDY	9	7
			CONTRACT NO. 66B88	
ILLINOIS FED. AID PROJECT				

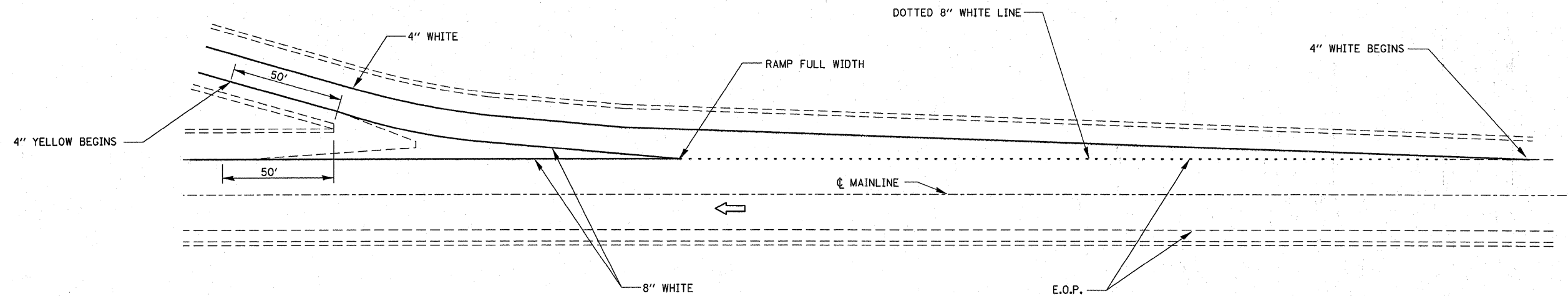
SCALE: SHEET NO. OF SHEETS STA. TO STA.



TYPICAL PAVEMENT MARKING FOR ENTRANCE RAMP TERMINALS

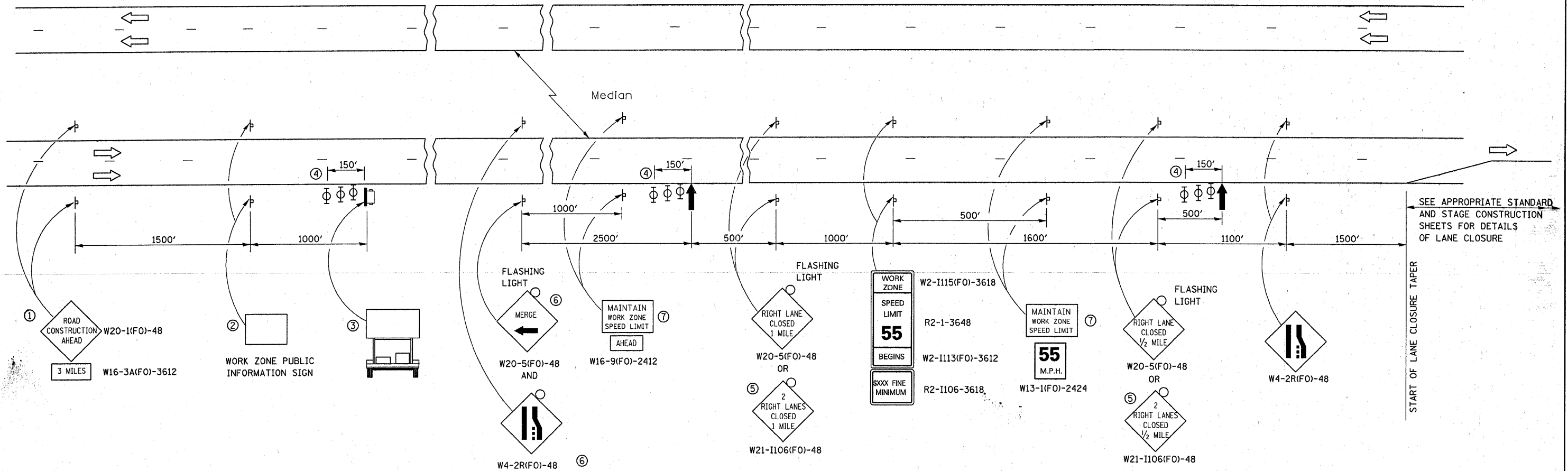


TYPICAL PAVEMENT MARKINGS



TYPICAL PAVEMENT MARKINGS FOR EXIT RAMP TERMINALS

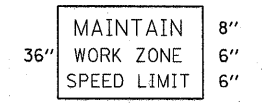
FILE NAME = c:\pw_work\pvidot\schwankerg\d0287178\066888-sht-details.dgn	USER NAME = schwankerg	DESIGNED -	REVISED -	STATE OF ILLINOIS DEPARTMENT OF TRANSPORTATION	RAMP PAVEMENT MARKING			F.A.I. RTE.	SECTION	COUNTY	TOTAL SHEETS	SHEET NO.	
	PLOT SCALE = 50.0000' / 1in.	DRAWN -	REVISED -					80	(32-211-5)	GRUNDY	9	8	
	PLOT DATE = 12/21/2011	CHECKED -	REVISED -		REVISED -	SCALE:	SHEET NO.	OF	SHEETS	STA.	TO STA.	CONTRACT NO. 66B88	
	DATE -	REVISED -	REVISED -		REVISED -	FED. ROAD DIST. NO.		ILLINOIS FED. AID PROJECT					



SEE APPROPRIATE STANDARD AND STAGE CONSTRUCTION SHEETS FOR DETAILS OF LANE CLOSURE

- ① THE ROAD CONSTRUCTION AHEAD SIGN SHALL BE LOCATED 3 MILES IN ADVANCE OF THE PROJECT LIMITS.
- ② THE MESSAGE AND SIZE OF THE WORK ZONE PUBLIC INFORMATION SIGN SHALL BE AS SPECIFIED BY THE DEPARTMENT.
- ③ TO BE PLACED IN THE MEDIAN WHEN FEASIBLE. THE MESSAGE BOARD SHALL BE USED TO DISPLAY STATUS OF LANES WITHIN THE PROJECT. THE PRIMARY MESSAGES SHALL BE:
"RIGHT LANE CLOSED" / " x MILES AHEAD"
"LEFT LANE CLOSED" / " x MILES AHEAD"
"ALL LANES OPEN"
- ④ THREE, TYPE II BARRICADES, DRUMS, OR VERTICAL BARRICADES AT 50' CENTERS.
- ⑤ THIS SIGN SHALL BE USED WHEN 2 LANES ARE CLOSED.
- ⑥ WHEN THE LEFT LANE IS CLOSED, SWITCH THESE TWO SIGNS AND THE DIRECTION OF THE MERGE ARROW.

⑦ 48"x36" FLUORESCENT ORANGE SIGN WITH BLACK LETTERS.



- ↑ ARROW BOARD
- ▭ PORTABLE CHANGEABLE MESSAGE SIGN
- ⊥ SIGN
- ⊕ TYPE II BARRICADE, DRUM, OR VERTICAL BARRICADE WITH MONODIRECTIONAL FLASHING LIGHT

GENERAL NOTE:

THIS STANDARD IS USED WHERE AT ANY TIME A LANE IS CLOSED ON A FREEWAY/EXPRESSWAY.

WHEN THE LEFT LANE IS CLOSED, LEFT LANE CLOSED SIGNS SHALL BE SUBSTITUTED FOR THE RIGHT LANE CLOSED SIGNS.

THE FIRST TWO SIGNS AND THE MESSAGE BOARD ARE STATIONARY. THE OTHER SIGNS AND ARROWBOARDS SHALL BE MOVED AS NECESSARY TO MAINTAIN THE REQUIRED DISTANCE FROM THE START OF THE LANE CLOSURE TAPER(S).

SEE SPECIAL PROVISIONS.

ALL DIMENSIONS ARE IN INCHES UNLESS OTHERWISE SHOWN.

FILE NAME =	USER NAME = schwenkerg	DESIGNED -	REVISED -	STATE OF ILLINOIS DEPARTMENT OF TRANSPORTATION	STANDARD 701400 (SPECIAL)	F.A.I. RTE.	SECTION	COUNTY	TOTAL SHEETS	SHEET NO.
ct:\pw_work\pwsdot\schenkerg\d8287178\066888-sht-details.dgn	DRAWN -	REVISED -	80			(32-2)1-5	GRUNDY	9	9	
PLOT SCALE = 50.0000' / 1" =	CHECKED -	REVISED -	CONTRACT NO. 66888							
PLOT DATE = 12/21/2011	DATE -	REVISED -	FED. ROAD DIST. NO. ILLINOIS FED. AID PROJECT							
				SCALE:	SHEET NO. OF SHEETS	STA. TO STA.				