

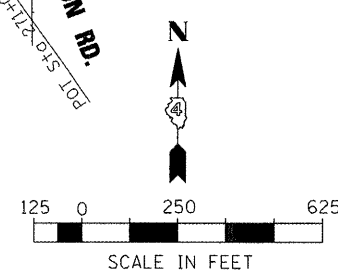
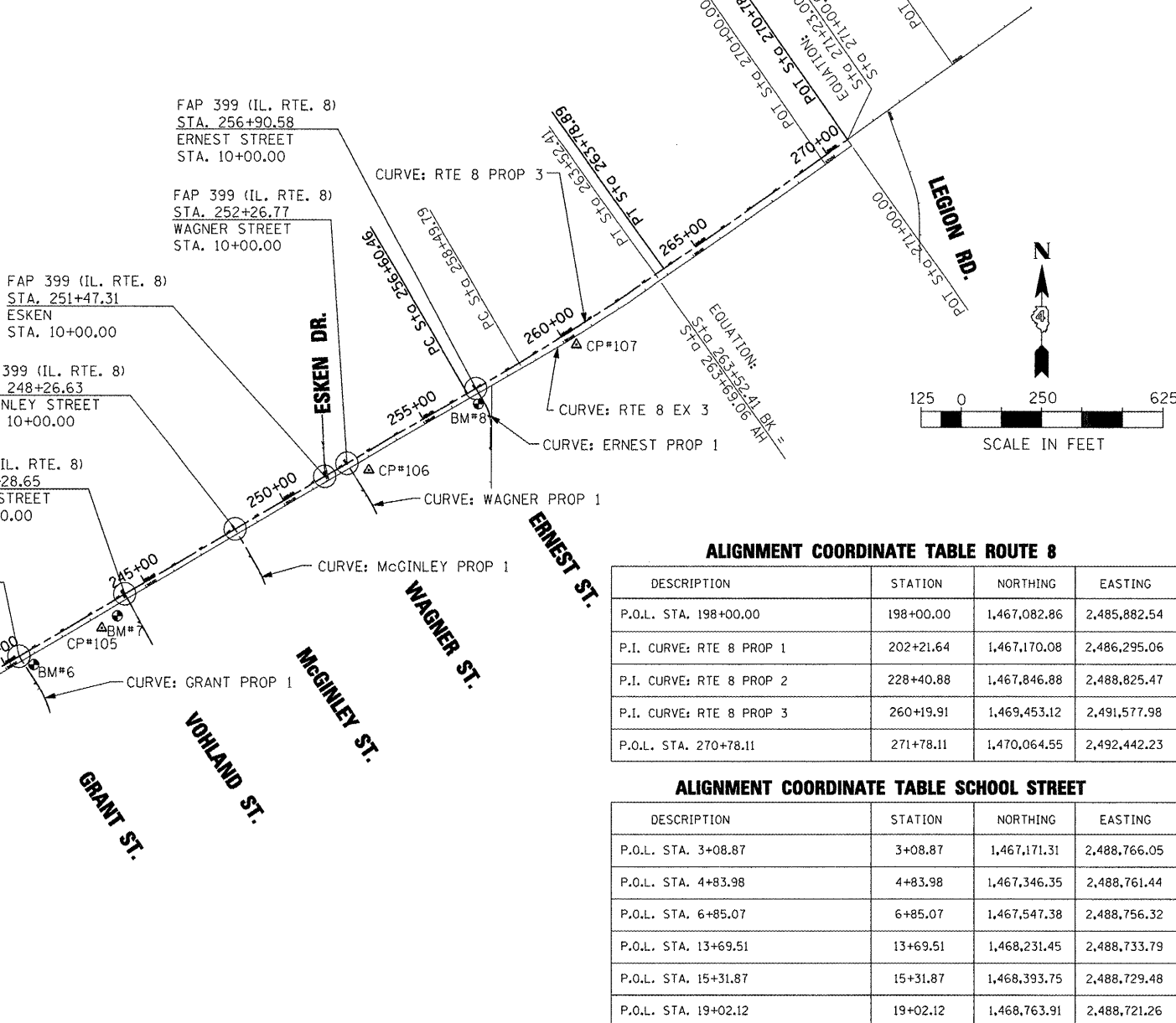
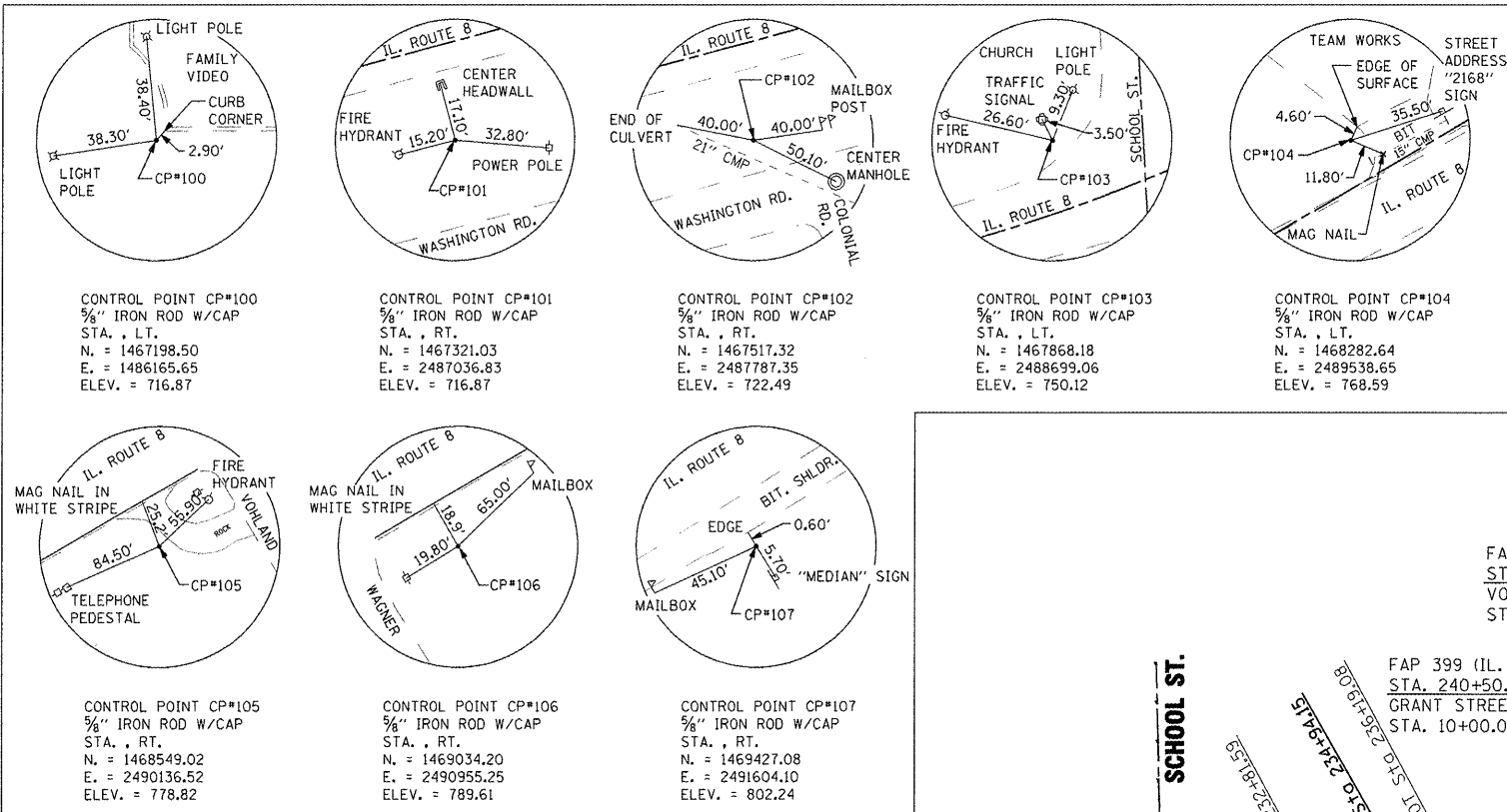
PROPOSED CURVE DATA

CURVE: RTE 8 PROP 1 PI STA. = 202+21.64 Δ = 3° 02' 07" (LT) D = 0° 34' 23" R = 10,000.00' T = 264.95' L = 529.78' E = 3.51' P.C. STA = 199+56.69 P.T. STA = 204+86.47	CURVE: RTE 8 PROP 2 PI STA. = 228+40.88 Δ = 15° 18' 11" (LT) D = 1° 09' 51" R = 4,921.25' T = 661.14' L = 1,314.41' E = 44.21' P.C. STA = 221+79.74 P.T. STA = 234+94.15	CURVE: RTE 8 PROP 3 PI STA. = 260+19.91 Δ = 5° 01' 07" (LT) D = 0° 41' 55" R = 8,202.10' T = 359.44' L = 718.43' E = 7.87' P.C. STA = 256+60.46 P.T. STA = 263+78.89	CURVE: GRANT PROP 1 PI STA. = 8+58.62 Δ = 12° 14' 33" (LT) D = 17° 56' 14" R = 319.42' T = 34.26' L = 68.25' E = 1.83' P.C. STA = 8+24.36 P.T. STA = 8+92.61	CURVE: MCGINLEY PROP 1 PI STA. = 8+36.44 Δ = 11° 21' 47" (LT) D = 18° 12' 58" R = 314.53' T = 31.29' L = 62.38' E = 1.55' P.C. STA = 8+05.15 P.T. STA = 8+67.53	CURVE: WAGNER PROP 1 PI STA. = 8+47.80 Δ = 5° 32' 27" (LT) D = 9° 48' 45" R = 583.90' T = 28.26' L = 56.47' E = 0.68' P.C. STA = 8+19.54 P.T. STA = 8+76.01	CURVE: ERNEST PROP 1 PI STA. = 9+09.77 Δ = 30° 17' 45" (LT) D = 44° 04' 25" R = 130.00' T = 35.19' L = 68.74' E = 4.68' P.C. STA = 8+74.58 P.T. STA = 9+43.32
---	--	--	--	---	---	---

EXISTING CURVE DATA

CURVE: RTE 8 EX 1 PI STA. = 200+32.94 Δ = 3° 02' 07" (LT) D = 0° 34' 23" R = 10,111.00' T = 267.89' L = 535.66' E = 3.55' P.C. STA = 197+65.05 P.T. STA = 203+00.71	CURVE: RTE 8 EX 2 PI STA. = 228+28.90 Δ = 13° 52' 36" (LT) D = 1° 31' 31" R = 3,756.69' T = 457.16' L = 909.85' E = 27.71' P.C. STA = 223+71.74 P.T. STA = 232+81.59	CURVE: RTE 8 EX 3 PI STA. = 261+01.26 Δ = 5° 01' 33" (LT) D = 1° 00' 00" R = 5,729.76' T = 251.47' L = 502.61' E = 5.52' P.C. STA = 258+49.79 P.T. STA = 263+52.41
---	--	--

CONTROL POINT TIES



ALIGNMENT COORDINATE TABLE ROUTE 8

DESCRIPTION	STATION	NORTHING	EASTING
P.O.L. STA. 198+00.00	198+00.00	1,467,082.86	2,485,882.54
P.I. CURVE: RTE 8 PROP 1	202+21.64	1,467,170.08	2,486,295.06
P.I. CURVE: RTE 8 PROP 2	228+40.88	1,467,846.88	2,488,825.47
P.I. CURVE: RTE 8 PROP 3	260+19.91	1,469,453.12	2,491,577.98
P.O.L. STA. 270+78.11	271+78.11	1,470,064.55	2,492,442.23

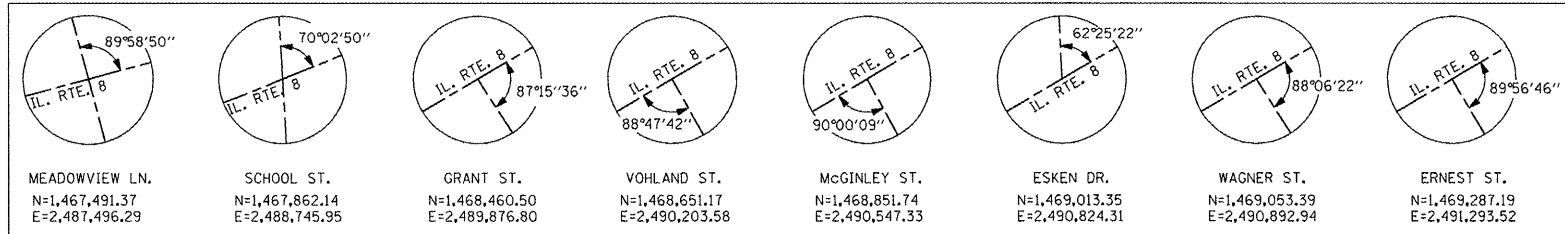
ALIGNMENT COORDINATE TABLE SCHOOL STREET

DESCRIPTION	STATION	NORTHING	EASTING
P.O.L. STA. 3+08.87	3+08.87	1,467,171.31	2,488,766.05
P.O.L. STA. 4+83.98	4+83.98	1,467,346.35	2,488,761.44
P.O.L. STA. 6+85.07	6+85.07	1,467,547.38	2,488,756.32
P.O.L. STA. 13+69.51	13+69.51	1,468,231.45	2,488,733.79
P.O.L. STA. 15+31.87	15+31.87	1,468,393.75	2,488,729.48
P.O.L. STA. 19+02.12	19+02.12	1,468,763.91	2,488,721.26

BENCHMARKS

BENCHMARK	DESCRIPTION	ELEVATION	STATION	OFFSET
BM#1	SOUTH CAP BOLT AT "M" IN MUELLER ON FIRE HYDRANT SOUTH SIDE IL. ROUTE 8	719.34	209+61	45.9' RT.
BM#2	CHISELED "C" IN NORTHEAST CORNER METAL RIM GAS VAULT SOUTH SIDE IL. ROUTE 8 AT CENTER MEADOWVIEW LANE	721.81	214+65	59.5' RT.
BM#3	SOUTH CAP BOLT AT "M" IN MUELLER ON FIRE HYDRANT NORTH SIDE IL. ROUTE 8 AT VERIZON BUILDING	737.75	222+08	58.1' LT.
BM#4	CHISELED "C" ON CONCRETE BASE OF CASEY'S STORE SIGN SOUTH SIDE IL. ROUTE 8	746.41	225+84	69.0' RT.
BM#5	CHISELED "X" ON CAP BOLT AT "T" IN ALBERTVILLE ON GREEN FIRE HYDRANT SOUTH SIDE IL. ROUTE 8 NEAR HOUSE #2181	763.62	233+05	60.3' RT.
BM#6	NORTH CAP BOLT AT "E" IN ALBERTVILLE ON FIRE HYDRANT EAST SIDE GRANT STREET	777.88	240+77	44.5' RT.
BM#7	NORTH CAP BOLT AT "E" IN ALBERTVILLE ON FIRE HYDRANT WEST SIDE VOILAND STREET	781.50	243+75	46.0' RT.
BM#8	NORTH CAP BOLT AT "E" IN ALBERTVILLE ON FIRE HYDRANT WEST SIDE ERNEST STREET AT IL. ROUTE 8	798.13	256+73	45.7' RT.

SIDEROAD INTERSECTION INFORMATION



**STATE OF ILLINOIS
DEPARTMENT OF TRANSPORTATION**

**FAP 399 (IL. RTE. 8)
LINE DIAGRAM, GEOMETRICS, CONTROL POINTS, AND BENCHMARKS**

F.A.P. RTE. 399	SECTION 36 R-7	COUNTY TAZEWELL	TOTAL SHEETS 390	SHEET NO. 40
CONTRACT NO. 68370				
ILLINOIS FED. AID PROJECT				

FILE NAME = X:\Projects\200803566\VDGN\04-Rte8-sh1-A
USER NAME = IDOT
DESIGNED -
DRAWN -
CHECKED -
DATE - 10-21-11

B-1.dgn
PLOT SCALE = 500.0000' / IN.
PLOT DATE = 10/21/2011
DESIGNED -
DRAWN -
CHECKED -
DATE - 10-21-11

REVISED -
REVISED -
REVISED -
REVISED -

SCALE: SHEET NO. OF SHEETS STA. TO STA.