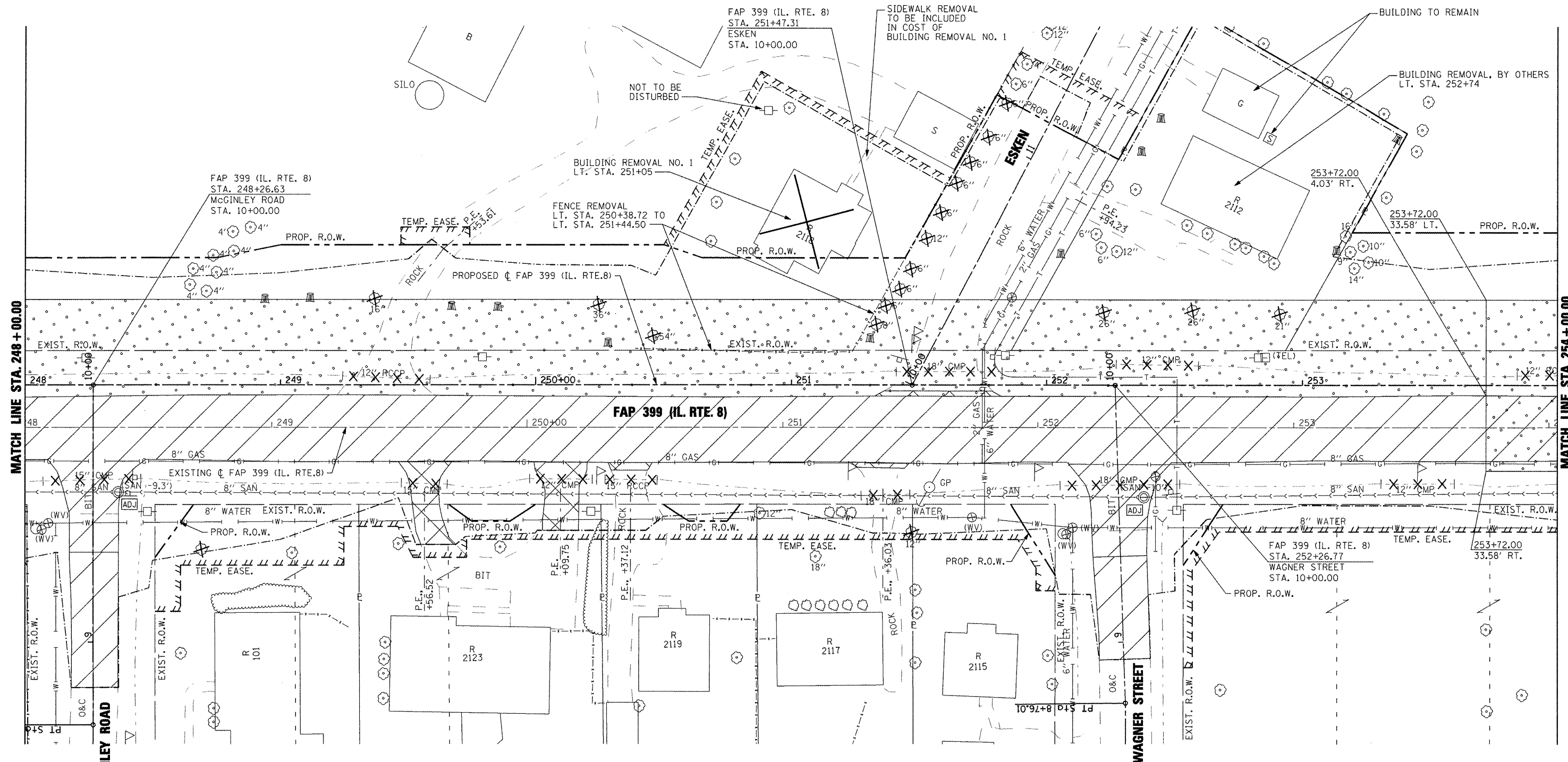

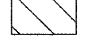
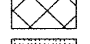
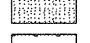
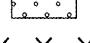




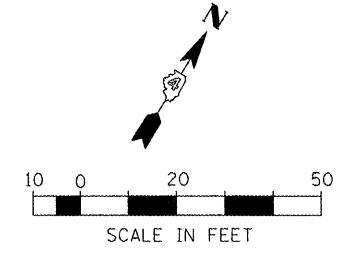
MATCH LINE STA. 248+00.00

MATCH LINE STA. 254+00.00



**LEGEND**

-  PAVEMENT REMOVAL
-  BITUMINOUS CONC. SHOULDER REMOVAL
-  DRIVEWAY PAVEMENT REMOVAL
-  HMA SURFACE REMOVAL - BUTT JOINT
-  REMOVAL AND DISPOSAL OF UNSUITABLE MATERIAL
-  PIPE CULVERT REMOVAL
-  TREE REMOVAL



FILE NAME =	USER NAME = IDOT	DESIGNED -	REVISED -
x:\projects\220603566\dgn\04-Rte8-sht-R	M-9.dgn	DRAWN -	REVISED -
PLOT SCALE = 48.004 FT / IN.	CHECKED -	REVISOR -	REVISED -
PLOT DATE = 10/21/2011	DATE - 10-21-11	REVISOR -	REVISED -

**STATE OF ILLINOIS  
DEPARTMENT OF TRANSPORTATION**

**FAP 399 (IL. RTE. 8)  
EXISTING AND REMOVAL PLANS**

SCALE: AS SHOWN SHEET NO. OF SHEETS STA. 248+00.00 TO STA. 254+00.00

F.A.P. RTE. 399	SECTION 36 R-7	COUNTY TAZEWELL	TOTAL SHEETS 390	SHEET NO. 49
ILLINOIS FED. AID PROJECT				CONTRACT NO. 68370