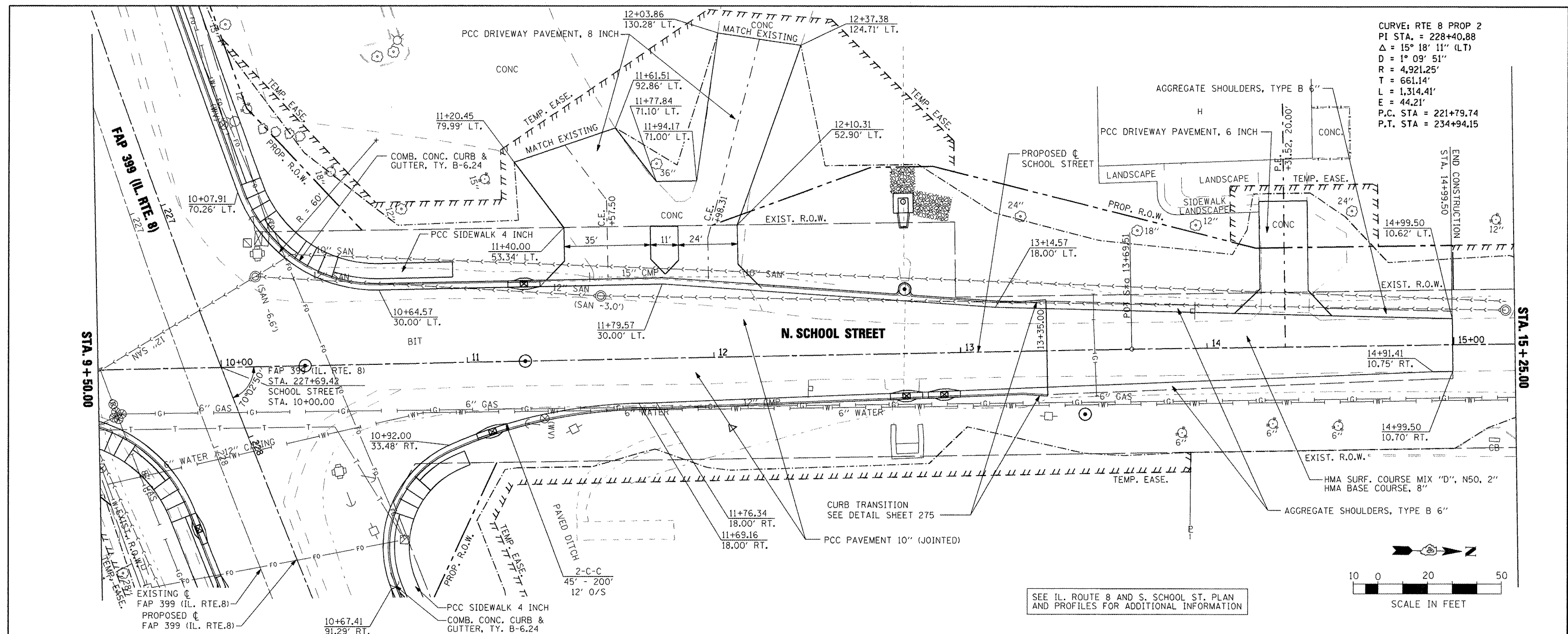


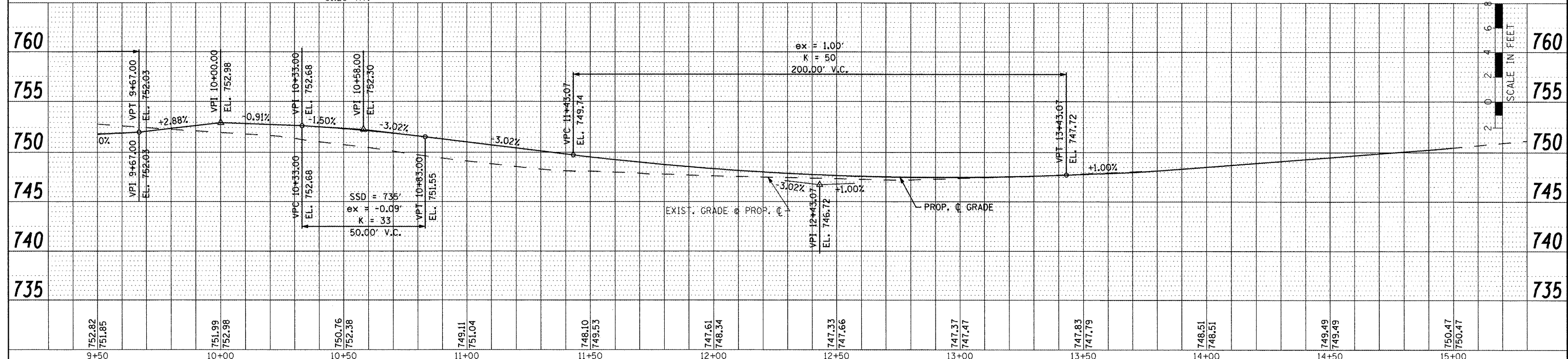
DATE	
BY	
SURVEYED	
ALIGNED	
CHECKED	
NO. OF WAY CHECKED	
STAD FILE NAME	
PLAN	
NOTE BOOK	
NO.	

DATE	
BY	
SURVEYED	
GRADES CHECKED	
B.M. NOTED	
STRUCTURE NOTATIONS CHECKED	
PROFILE	
NOTE BOOK	
NO.	

CURVE: RTE B PROP 2
 PI STA. = 228+40.88
 $\Delta = 15^\circ 18' 11''$ (LT)
 $D = 1^\circ 09' 51''$
 $R = 4,921.25'$
 $T = 661.14'$
 $L = 1,314.41'$
 $E = 44.21'$
 P.C. STA = 221+79.74
 P.T. STA = 234+94.15



SEE IL. ROUTE 8 AND S. SCHOOL ST. PLAN AND PROFILES FOR ADDITIONAL INFORMATION



FILE NAME =	USER NAME = IDOT	DESIGNED -	REVISED -	STATE OF ILLINOIS DEPARTMENT OF TRANSPORTATION	FAP 399 (IL. RTE. 8) NORTH SCHOOL STREET - ROADWAY PLAN AND PROFILE		F.A.P. RTE. 399	SECTION 36 R-7	COUNTY TAZEWELL	TOTAL SHEETS 390	SHEET NO. 67	
x:\projects\200803566\dgn\04-Rte8-ht-PLN-PRF-N-School.dgn		DRAWN -	REVISED -		SCALE: AS SHOWN	SHEET NO. OF	SHEETS	STA. 9+50.00	TO STA. 15+25.00	CONTRACT NO. 68370		
		CHECKED -	REVISED -		ILLINOIS FED. AID PROJECT							
		DATE -	REVISED -									