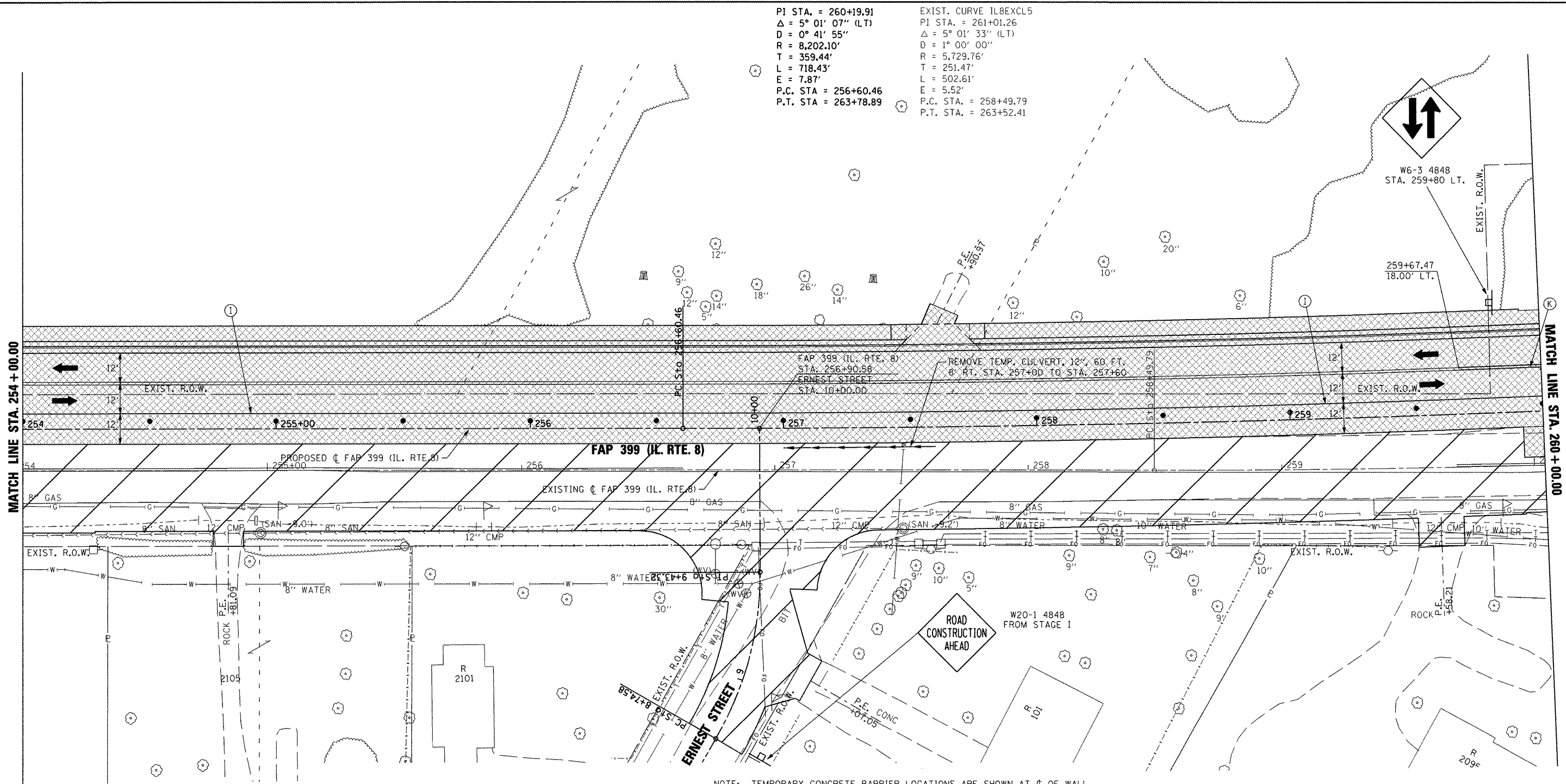


PI STA. = 260+19.91  
 $\Delta = 5^\circ 01' 07''$  (LT)  
 $D = 0^\circ 41' 55''$   
 $R = 8,202.10'$   
 $T = 359.44'$   
 $L = 718.43'$   
 $E = 7.87'$   
 P.C. STA. = 256+60.46  
 P.T. STA. = 263+78.89

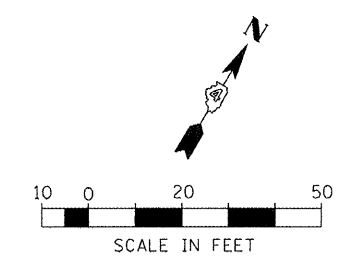
EXIST. CURVE 1L8EXCL5  
 PI STA. = 261+01.26  
 $\Delta = 5^\circ 01' 33''$  (LT)  
 $D = 1^\circ 00' 00''$   
 $R = 5,729.76'$   
 $T = 251.47'$   
 $L = 502.61'$   
 $E = 5.52'$   
 P.C. STA. = 258+49.79  
 P.T. STA. = 263+52.41



NOTE: TEMPORARY CONCRETE BARRIER LOCATIONS ARE SHOWN AT  $\phi$  OF WALL.

**TEMPORARY PAVEMENT MARKING LEGEND**

(A) TEMP. PAVE. MARK. - 4" WHITE SOLID	(I) PAVE. MARK. TAPE - 4" WHITE SOLID			CONSTRUCTION THIS STAGE
(B) TEMP. PAVE. MARK. - 4" YELLOW SOLID	(J) PAVE. MARK. TAPE - 4" YELLOW SOLID			
(C) TEMP. PAVE. MARK. - DOUBLE 4" YELLOW SOLID	(K) PAVE. MARK. TAPE - DOUBLE 4" YELLOW SOLID			TEMPORARY PAVEMENT
(D) TEMP. PAVE. MARK. - 4" YELLOW SKIP DASH	(L) PAVE. MARK. TAPE - 4" YELLOW SKIP DASH			
(E) TEMP. PAVE. MARK. - 8" WHITE SOLID	(M) PAVE. MARK. TAPE - 8" WHITE SOLID			TRAFFIC LANE
(F) TEMP. PAVE. MARK. - 8" WHITE SKIP DASH	(N) PAVE. MARK. TAPE - 8" WHITE SKIP DASH			
(G) TEMP. PAVE. MARK. - 24" WHITE SOLID (STOP BAR)	(O) PAVE. MARK. TAPE - 12" YELLOW SOLID (DIAGONAL)			TEMPORARY CONCRETE BARRIER
(H) TEMP. PAVE. MARK. - LETTERS AND SYMBOLS	(P) PAVE. MARK. TAPE - 12" WHITE SOLID (DIAGONAL)			
TEMP. PAVE. MARK. = PAINT	(Q) PAVE. MARK. TAPE - 24" WHITE SOLID (STOP BAR)			
	(R) PAVE. MARK. TAPE - LETTERS AND SYMBOLS			
	PAVE. MARK. TAPE = PAVEMENT MARKING TAPE, TYPE III			



FILE NAME =	USER NAME = 1001	DESIGNED -	REVISED -
x:\projects\200803566\dgn\04-Rte8-sht-5	aging-3-K.dgn	DRAWN -	REVISED -
	PLOT SCALE = 41.249 FT / IN.	CHECKED -	REVISED -
	PLOT DATE = 10/21/2011	DATE = 10-21-11	REVISED -

**STATE OF ILLINOIS**  
**DEPARTMENT OF TRANSPORTATION**

**FAP 399 (IL RTE. 8)**  
**MAINTENANCE OF TRAFFIC - STAGE III**

SCALE: SHEET NO. OF SHEETS STA. 254+00.00 TO STA. 260+00.00

F.A.P. RTE.	SECTION	COUNTY	TOTAL SHEETS	SHEET NO.
399	36 R-7	TAZEWELL	390	148
CONTRACT NO. 68370				
[ILLINOIS] FED. AID PROJECT				