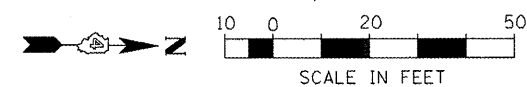
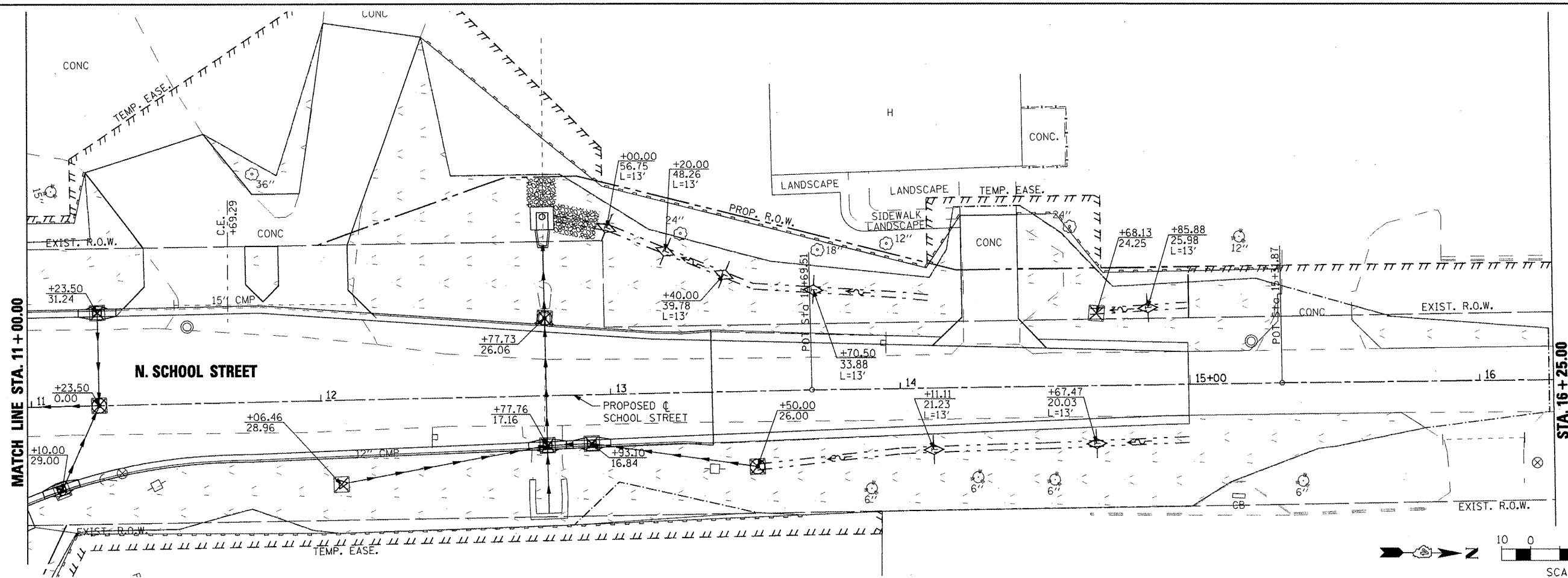
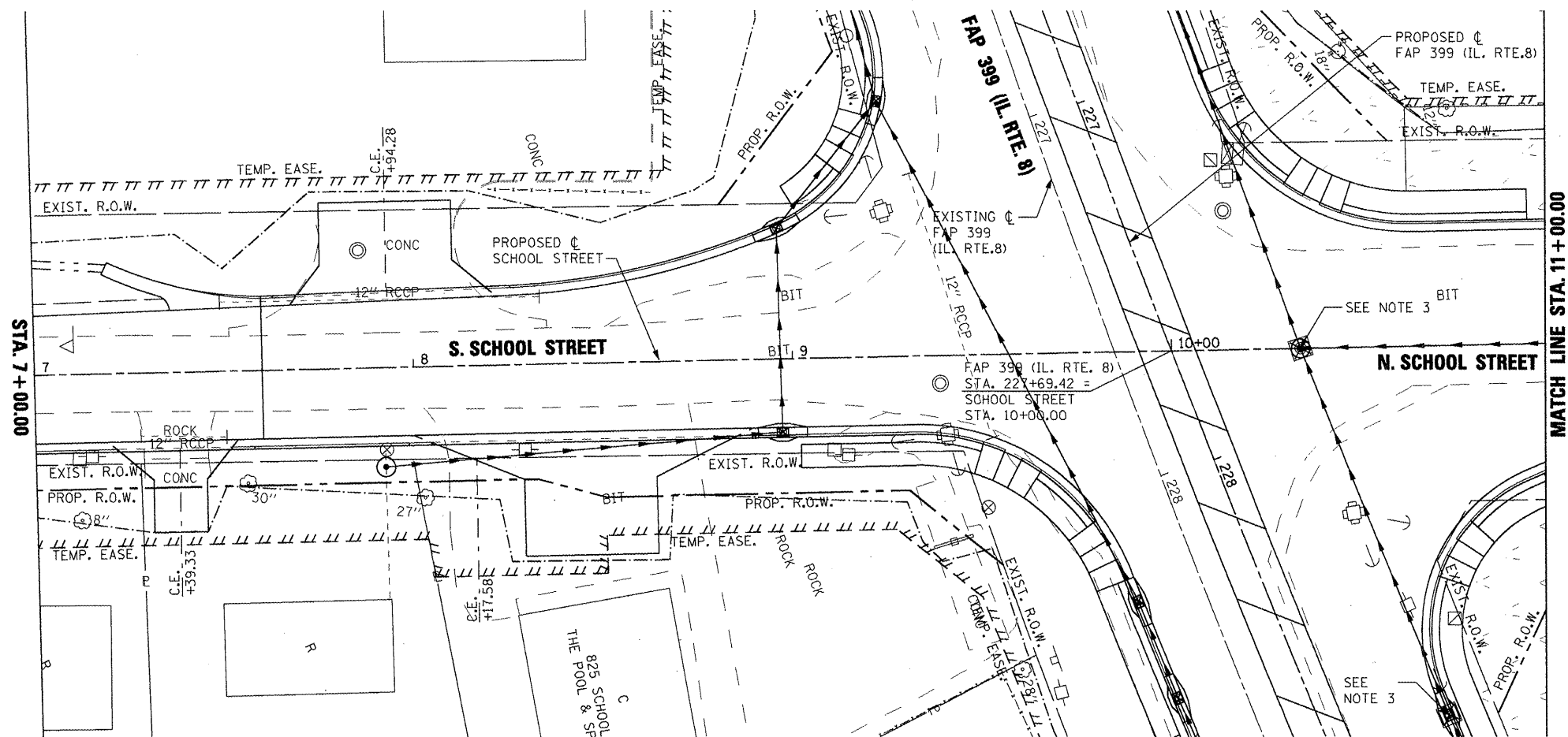


- NOTE**
1. ALL EROSION CONTROL INSTALLATIONS FROM STAGE 1 TO BE MAINTAINED THROUGHOUT THE DURATION OF STAGE 2
 2. STATION 1 OFFSETS ARE BASED ON SCHOOL STREET ALIGNMENT.
 3. SEE IL. RTE 8 SHEETS FOR ITEMS ALONG IL. RTE. 8 ALIGNMENT.

LEGEND:

	INLET AND PIPE PROTECTION
	TEMPORARY DITCH CHECK
	PERIMETER EROSION BARRIER
	DIRECTION OF FLOW
	WORK ZONE
	TEMPORARY EROSION CONTROL SEEDING (SEEDING CLASS 7)



FILE NAME =	USER NAME = IDOT	DESIGNED - MD	REVISED -	STATE OF ILLINOIS DEPARTMENT OF TRANSPORTATION	FAP 399 (IL. RTE. 8) EROSION CONTROL PLAN- STAGE 2	F.A.P. RTE. 399	SECTION 36 R-7	COUNTY TAZEWELL	TOTAL SHEETS 390	SHEET NO. 169	
PROJECT NO. = 2200803566	DRAWN - LF	CHECKED - GG	REVISED -			SCALE: AS SHOWN	SHEET NO. OF SHEETS	CONTRACT NO. 68370			
PLOT SCALE = 48.00' / IN.	DATE - 11/25/09	REVISED -	REVISED -			ILLINOIS FED. AID PROJECT					
PLOT DATE = 10/21/2011	REVISED -	REVISED -	REVISED -								