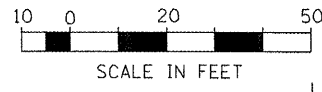


STRUCTURE #20
 STA. 231+00.00, 30.0' LT
 INLET-MANHOLE,
 TY G-1, 5'-DIA.
 RIM ELEV = 760.29
 INV ELEV = 754.57 (27" E)
 INV ELEV = 754.37 (27" W)

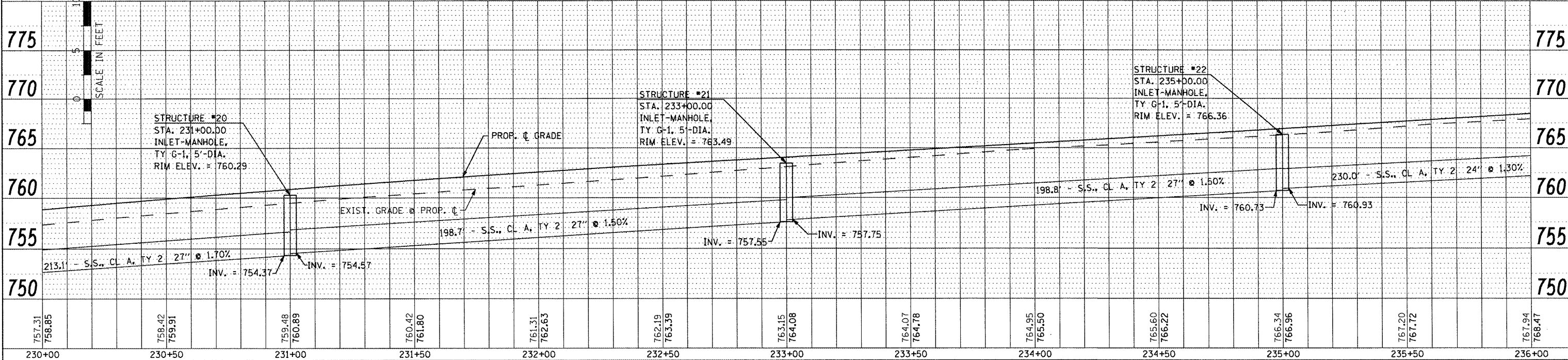
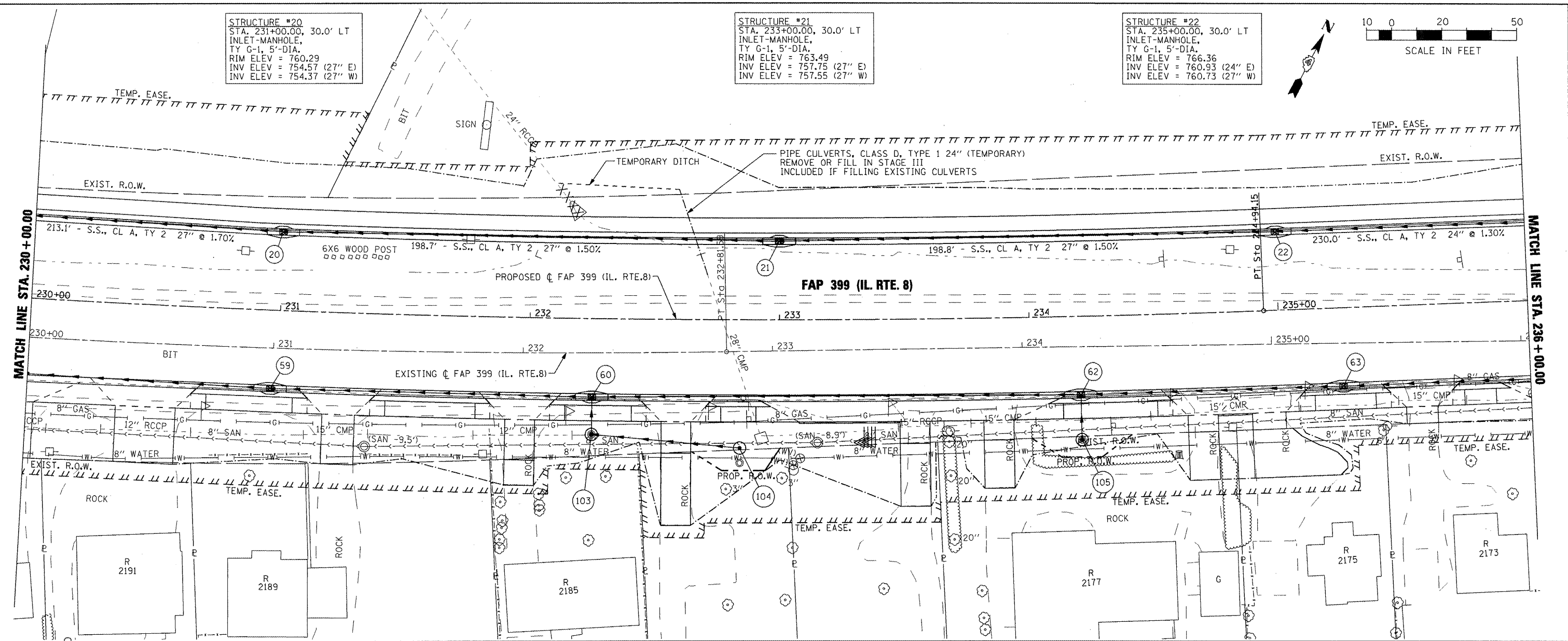
STRUCTURE #21
 STA. 233+00.00, 30.0' LT
 INLET-MANHOLE,
 TY G-1, 5'-DIA.
 RIM ELEV = 763.49
 INV ELEV = 757.75 (27" E)
 INV ELEV = 757.55 (27" W)

STRUCTURE #22
 STA. 235+00.00, 30.0' LT
 INLET-MANHOLE,
 TY G-1, 5'-DIA.
 RIM ELEV = 766.36
 INV ELEV = 760.93 (24" E)
 INV ELEV = 760.73 (27" W)



DATE	
BY	
PLAN	
NOTE BOOK	
NO.	

DATE	
BY	
PROFILE	
NOTE BOOK	
NO.	



FILE NAME =	USER NAME = 100T	DESIGNED -	REVISED -	STATE OF ILLINOIS DEPARTMENT OF TRANSPORTATION	FAP 399 (IL. RTE. 8) DRAINAGE PLAN AND PROFILE - NORTH	F.A. RTE.	SECTION	COUNTY	TOTAL SHEETS	SHEET NO.	
xi:\proj\jea\ta\200803566\dgn\D4-Rte8-sh-t-DRN-G-NORTH.dgn		DRAWN -	REVISED -			399	36 R-7	TAZEWELL	390	182	
		CHECKED -	REVISED -			SCALE: AS SHOWN		SHEET NO. OF SHEETS		STA. 230+00.00 TO STA. 236+00.00	ILLINOIS FED. AID PROJECT
		DATE -	REVISED -							CONTRACT NO. 68370	