

STRUCTURE #26  
STA. 242+00.00, 30.0' LT  
INLET-MANHOLE, TYPE G-1, 5' DIA.  
RIM ELEV = 776.84  
INV ELEV = 771.77 (24" E)  
INV ELEV = 771.57 (24" W)

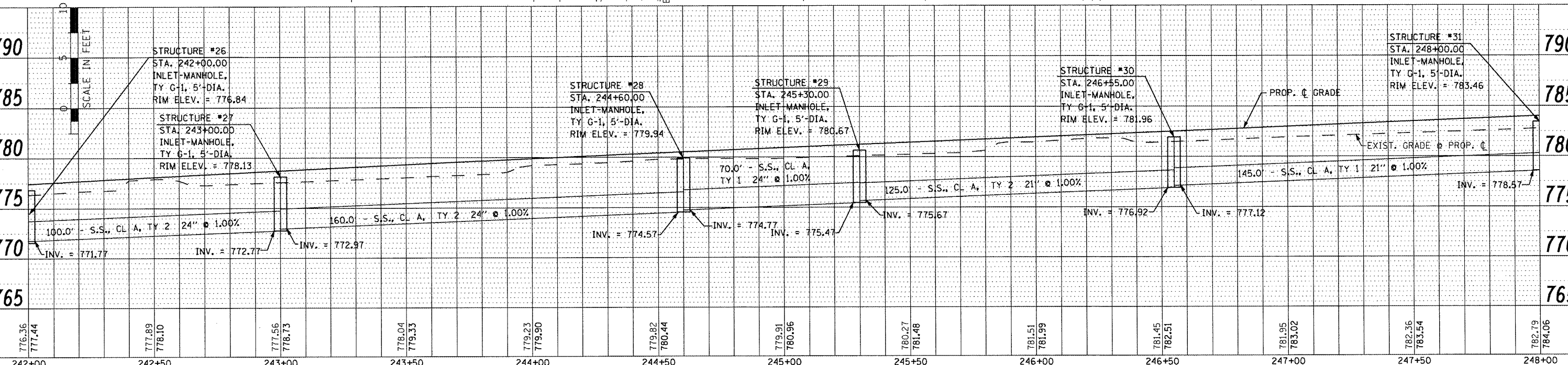
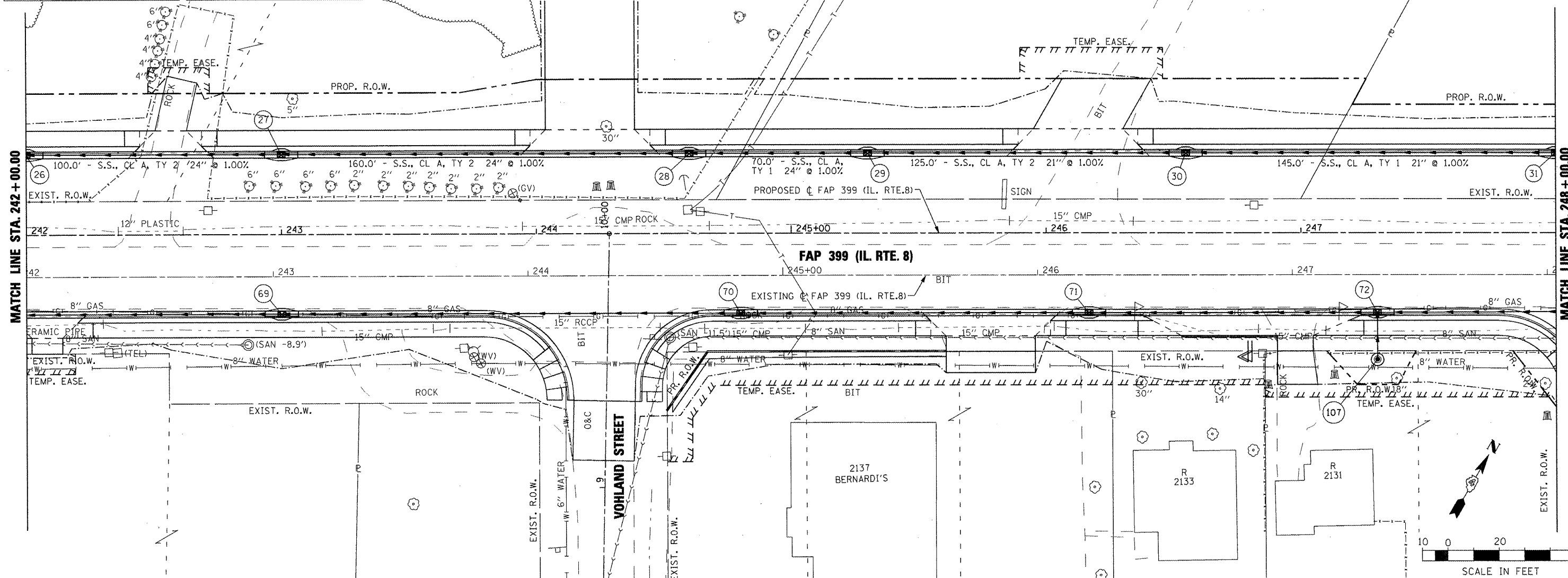
STRUCTURE #27  
STA. 243+00.00, 30.0' LT  
INLET-MANHOLE, TYPE G-1, 5' DIA.  
RIM ELEV = 778.13  
INV ELEV = 772.97 (24" E)  
INV ELEV = 772.77 (24" W)

STRUCTURE #28  
STA. 244+60.00, 30.0' LT  
INLET-MANHOLE, TYPE G-1, 5' DIA.  
RIM ELEV = 779.94  
INV ELEV = 774.77 (24" E)  
INV ELEV = 774.57 (24" W)

STRUCTURE #29  
STA. 245+30.00, 30.0' LT  
INLET-MANHOLE, TYPE G-1, 5' DIA.  
RIM ELEV = 780.67  
INV ELEV = 775.67 (21" E)  
INV ELEV = 775.47 (21" W)

STRUCTURE #30  
STA. 246+55.00, 30.0' LT  
INLET-MANHOLE, TYPE G-1, 5' DIA.  
RIM ELEV = 781.96  
INV ELEV = 777.12 (21" E)  
INV ELEV = 776.92 (21" W)

STRUCTURE #31  
STA. 248+00.00, 30.0' LT  
INLET-MANHOLE, TYPE G-1, 5' DIA.  
RIM ELEV = 783.46  
INV ELEV = 778.77 (21" E)  
INV ELEV = 778.57 (21" W)



|                   |  |
|-------------------|--|
| DATE              |  |
| BY                |  |
| PROJECT           |  |
| PLANNED           |  |
| DESIGNED          |  |
| CHECKED           |  |
| NOTED             |  |
| NO. OF SHEETS     |  |
| NO. OF THIS SHEET |  |

|                   |  |
|-------------------|--|
| DATE              |  |
| BY                |  |
| PROJECT           |  |
| PLANNED           |  |
| DESIGNED          |  |
| CHECKED           |  |
| NOTED             |  |
| NO. OF SHEETS     |  |
| NO. OF THIS SHEET |  |

|  |                  |            |           |   |  |                     |                     |                                  |         |                           |              |           |
|--|------------------|------------|-----------|---|--|---------------------|---------------------|----------------------------------|---------|---------------------------|--------------|-----------|
| FILE NAME =  | USER NAME = IODT | DESIGNED - | REVISED - | STATE OF ILLINOIS<br>DEPARTMENT OF TRANSPORTATION |  | FAP 399 (IL RTE. 8) |                     | F.A. RTE.                        | SECTION | COUNTY                    | TOTAL SHEETS | SHEET NO. |
| W:\proj\joc\200803566\vgm\104-Rte8-sh1-DRN-N-NORTH.dgn |                  | DRAWN -    | REVISED - |   |  | SCALE: AS SHOWN     | SHEET NO. OF SHEETS | STA. 242+00.00 TO STA. 248+00.00 | 399     | 36 R-7                    | TAZEWELL     | 390       |
| PLOT SCALE = 40.0000 / IN.                             |                  | CHECKED -  | REVISED - |   |  |                     |                     |                                  |         | CONTRACT NO. 68370        |              |           |
| PLOT DATE = 10/21/2011                                 |                  | DATE -     | REVISED - |   |  |                     |                     |                                  |         | ILLINOIS FED. AID PROJECT |              |           |