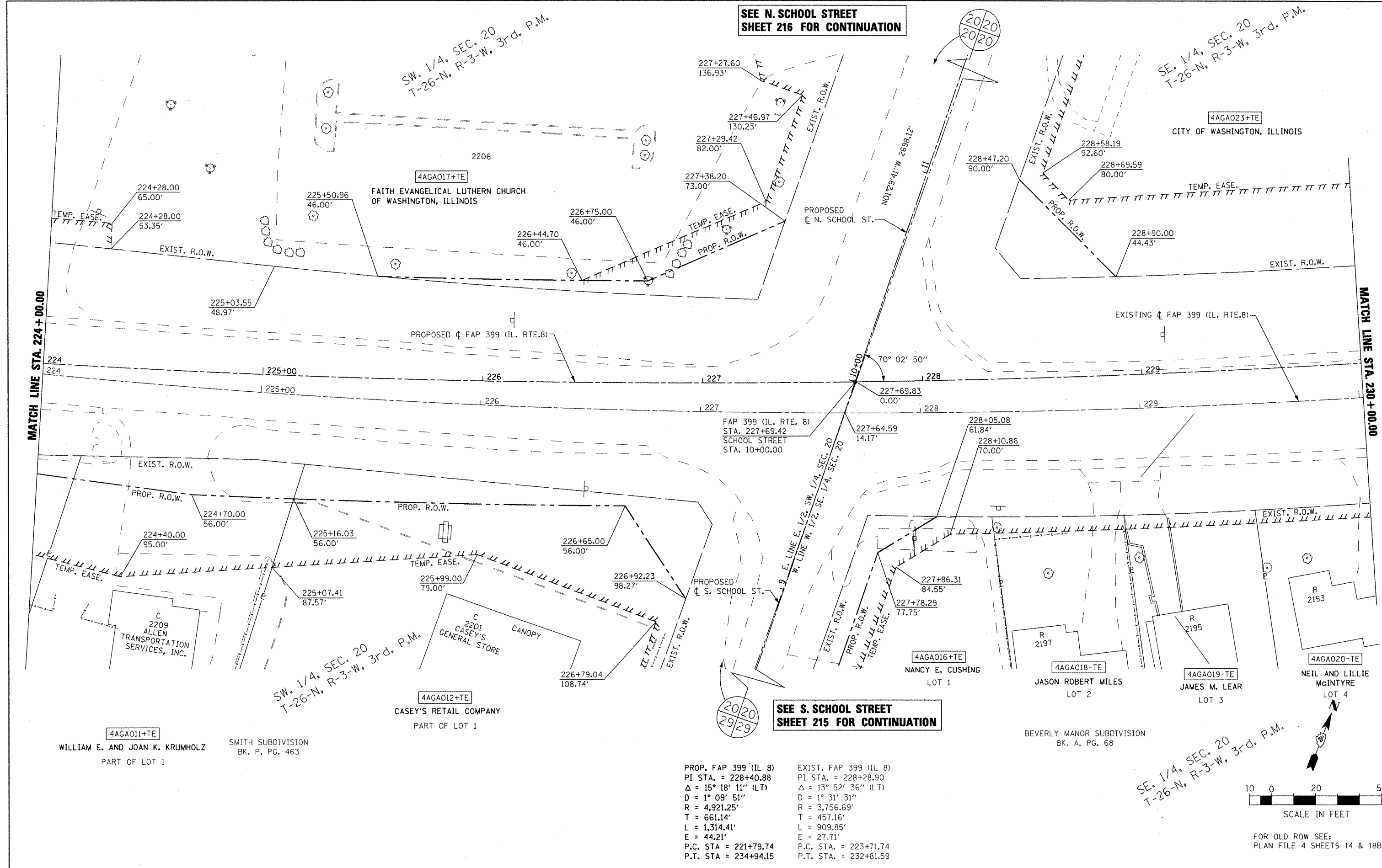


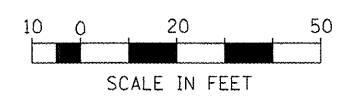
SEE N. SCHOOL STREET SHEET 216 FOR CONTINUATION

SEE S. SCHOOL STREET SHEET 215 FOR CONTINUATION



PROP. FAP 399 (IL 8)  
 PI STA. = 228+40.88  
 $\Delta = 15^\circ 18' 11''$  (LT)  
 $D = 1^\circ 09' 51''$   
 $R = 4,921.25'$   
 $T = 661.14'$   
 $L = 1,314.41'$   
 $E = 44.21'$   
 $P.C. STA = 221+79.74$   
 $P.T. STA = 234+94.15$

EXIST. FAP 399 (IL 8)  
 PI STA. = 228+28.90  
 $\Delta = 13^\circ 52' 36''$  (LT)  
 $D = 1^\circ 31' 31''$   
 $R = 3,756.69'$   
 $T = 457.16'$   
 $L = 909.85'$   
 $E = 27.71'$   
 $P.C. STA = 223+71.74$   
 $P.T. STA = 232+81.59$



SCALE IN FEET

FOR OLD ROW SEE: PLAN FILE 4 SHEETS 14 & 18B

PLAT FILE: 17

FILE NAME =	USER NAME = IDOT	DESIGNED -	REVISED -	<b>STATE OF ILLINOIS DEPARTMENT OF TRANSPORTATION</b>	<b>FAP 399 (IL. RTE. 8) RIGHT OF WAY PLANS</b>	F.A.P. RTE.	SECTION	COUNTY	TOTAL SHEETS	SHEET NO.		
x:\projects\200803566\dgn\04-Rte8-shr-RW-5.dgn		DRAWN -	REVISED -			SCALE: AS SHOWN	SHEET NO. OF SHEETS	399	36 R-7	TAZEWELL	390	207
		CHECKED -	REVISED -			STA. 224+00.00 TO STA. 230+00.00						
		DATE - 10-21-11	REVISED -									CONTRACT NO. 68370
						ILLINOIS FED. AID PROJECT						