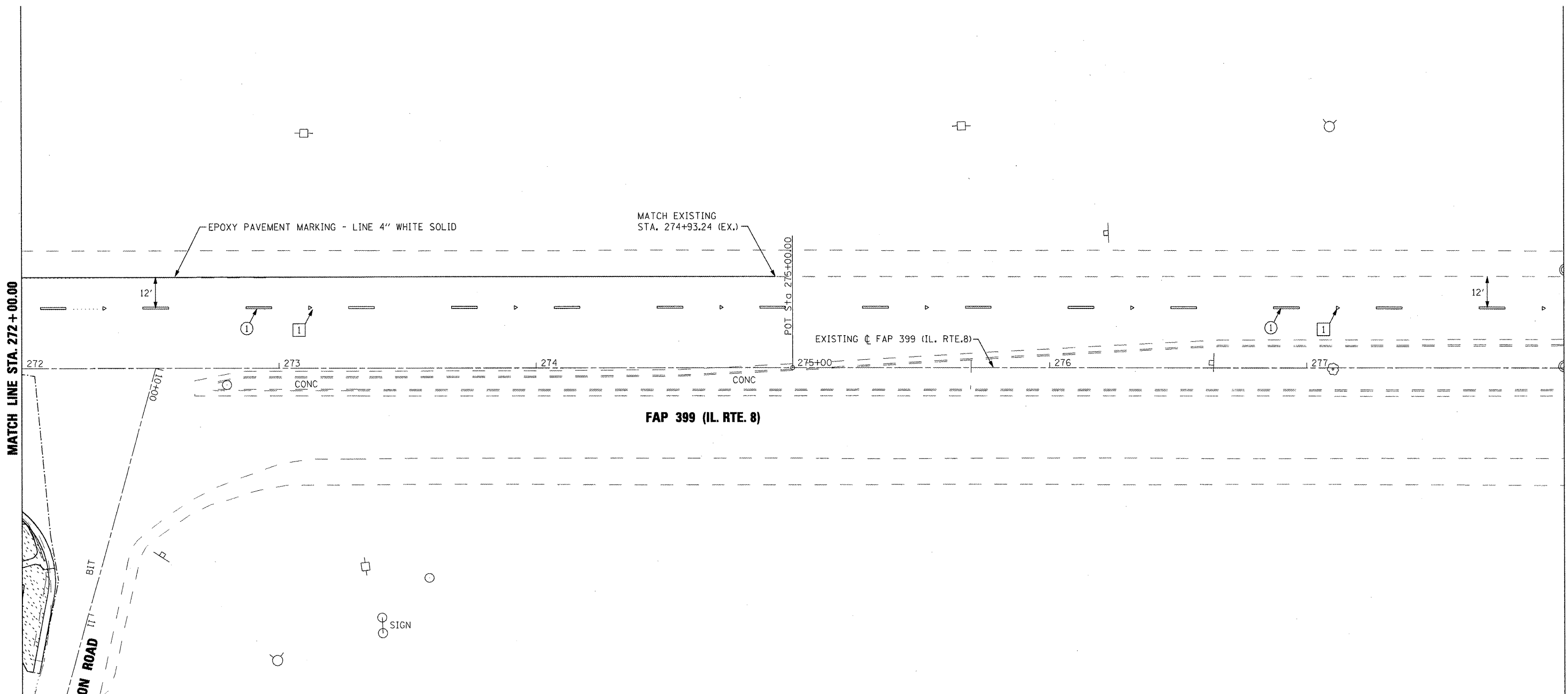


MATCH LINE STA. 272+00.00

MATCH LINE STA. 278+00.00



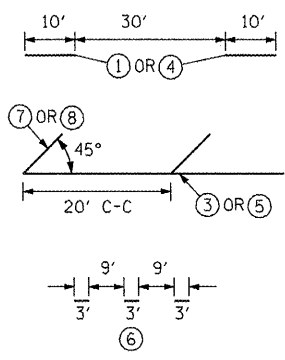
**LANDSCAPING LEGEND**

	SEEDING, CLASS 2A
	SODDING, SALT TOLERANT

**PAVEMENT MARKING LEGEND**

①	PREFORMED PLASTIC PAVEMENT MARKING - LINE 6" WHITE SKIP DASH
②	EPOXY PAVEMENT MARKING - LINE 4" YELLOW SOLID (DOUBLE LINE)
③	EPOXY PAVEMENT MARKING - LINE 4" YELLOW SOLID
④	EPOXY PAVEMENT MARKING - LINE 4" YELLOW SKIP DASH
⑤	EPOXY PAVEMENT MARKING - LINE 8" WHITE SOLID
⑥	EPOXY PAVEMENT MARKING - LINE 8" WHITE SKIP DASH
⑦	EPOXY PAVEMENT MARKING - LINE 12" YELLOW SOLID
⑧	EPOXY PAVEMENT MARKING - LINE 12" WHITE SOLID
⑨	EPOXY PAVEMENT MARKING - LINE 24" WHITE SOLID (STOP BAR)
⑩	EPOXY PAVEMENT MARKING - LETTERS AND SYMBOLS

1. PAVEMENT MARKINGS SHALL BE IN ACCORDANCE WITH DISTRICT CADD DETAILS - STANDARD 780001.



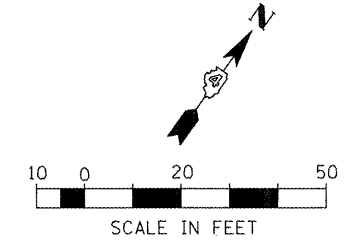
**RAISED REFLECTIVE PAVEMENT MARKERS (RRPM) LEGEND**

①	▲ ONE-WAY CRYSTAL MARKER AT 80' CENTERS
②	◆ TWO-WAY AMBER MARKER AT 40' CENTERS

**SIGN POST LEGEND**

	WOOD POST LENGTH
	OFFSET FROM EDGE OF PAVEMENT

• SEE STANDARD 720006 FOR OFFSET



FILE NAME =	USER NAME = IDOT	DESIGNED -	REVISED -
x:\projects\2008\3566\dgn\04-Rte8-shr-P	K-13.dgn	DRAWN -	REVISED -
PLOT SCALE = 40.004 FT / IN.	CHECKED -	REVISIONS -	REVISIONS -
PLOT DATE = 10/21/2011	DATE = 10-21-11	REVISIONS -	REVISIONS -

**STATE OF ILLINOIS  
DEPARTMENT OF TRANSPORTATION**

**FAP 399 (IL. RTE. 8)  
PAVEMENT MARKING & LANDSCAPE PLANS**

SCALE: AS SHOWN SHEET NO. OF SHEETS STA. 272+00.00 TO STA. 278+00.00

F.A.P. RTE. 399	SECTION 36 R-7	COUNTY TAZEWELL	TOTAL SHEETS 390	SHEET NO. 251
CONTRACT NO. 68370				ILLINOIS FED. AID PROJECT