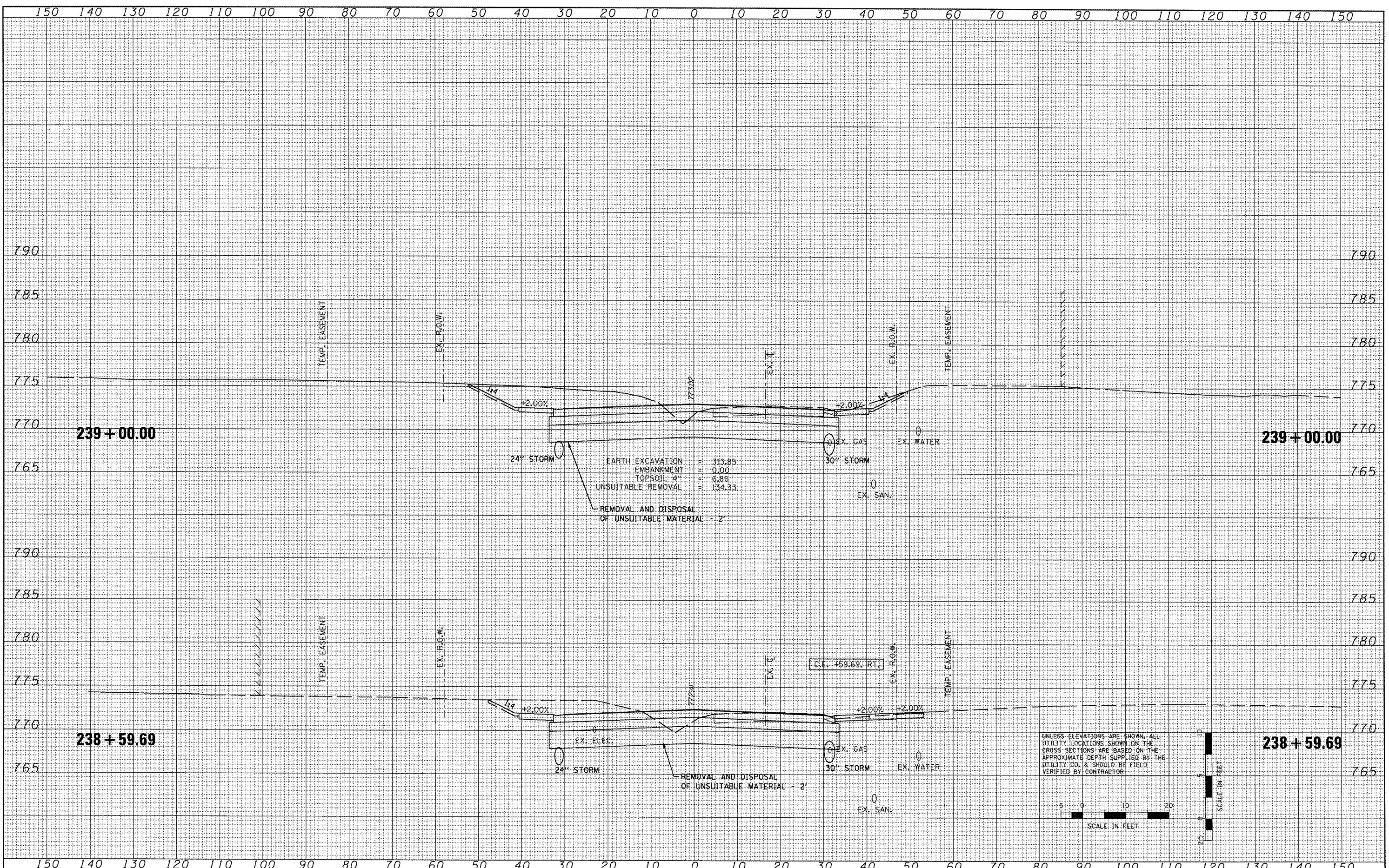


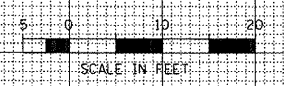
FINAL SURVEY	BY	DATE
REVISED		
PLOTTED		
TEMPLATE		
AREAS		
CHECKED		

ORIGINAL SURVEY	BY	DATE
REVISED		
PLOTTED		
TEMPLATE		
AREAS		
CHECKED		



FARTH EXCAVATION = 315.85
 EMBANKMENT = 0.00
 TOPSOIL - 4' = 6.86
 UNSUITABLE REMOVAL = 134.33
 REMOVAL AND DISPOSAL OF UNSUITABLE MATERIAL - 2'

UNLESS ELEVATIONS ARE SHOWN, ALL UTILITY LOCATIONS SHOWN ON THE CROSS SECTIONS ARE BASED ON THE APPROXIMATE DEPTH SUPPLIED BY THE UTILITY CO. & SHOULD BE FIELD VERIFIED BY CONTRACTOR



FILE NAME =
 v:\projects\200803566\dgn\gpk\XS-IL-RT8-sheet.dgn

USER NAME = IDOT
 PLOT SCALE = 20.7420' / IN.
 PLOT DATE = 10/21/2011

DESIGNED -
 DRAWN -
 CHECKED -
 DATE - 10-21-11

REVISED -
 REVISED -
 REVISED -
 REVISED -

STATE OF ILLINOIS
 DEPARTMENT OF TRANSPORTATION

FAP 399 (IL RTE. 8)
 CROSS SECTIONS

SCALE: SHEET NO. OF SHEETS STA. 238+59.69 TO STA. 239+00.00

F.A.P. RTE.	SECTION	COUNTY	TOTAL SHEETS	SHEET NO.
399	36 R-7	TAZEWELL	390	346
CONTRACT NO. 68370			ILLINOIS FED. AID PROJECT	