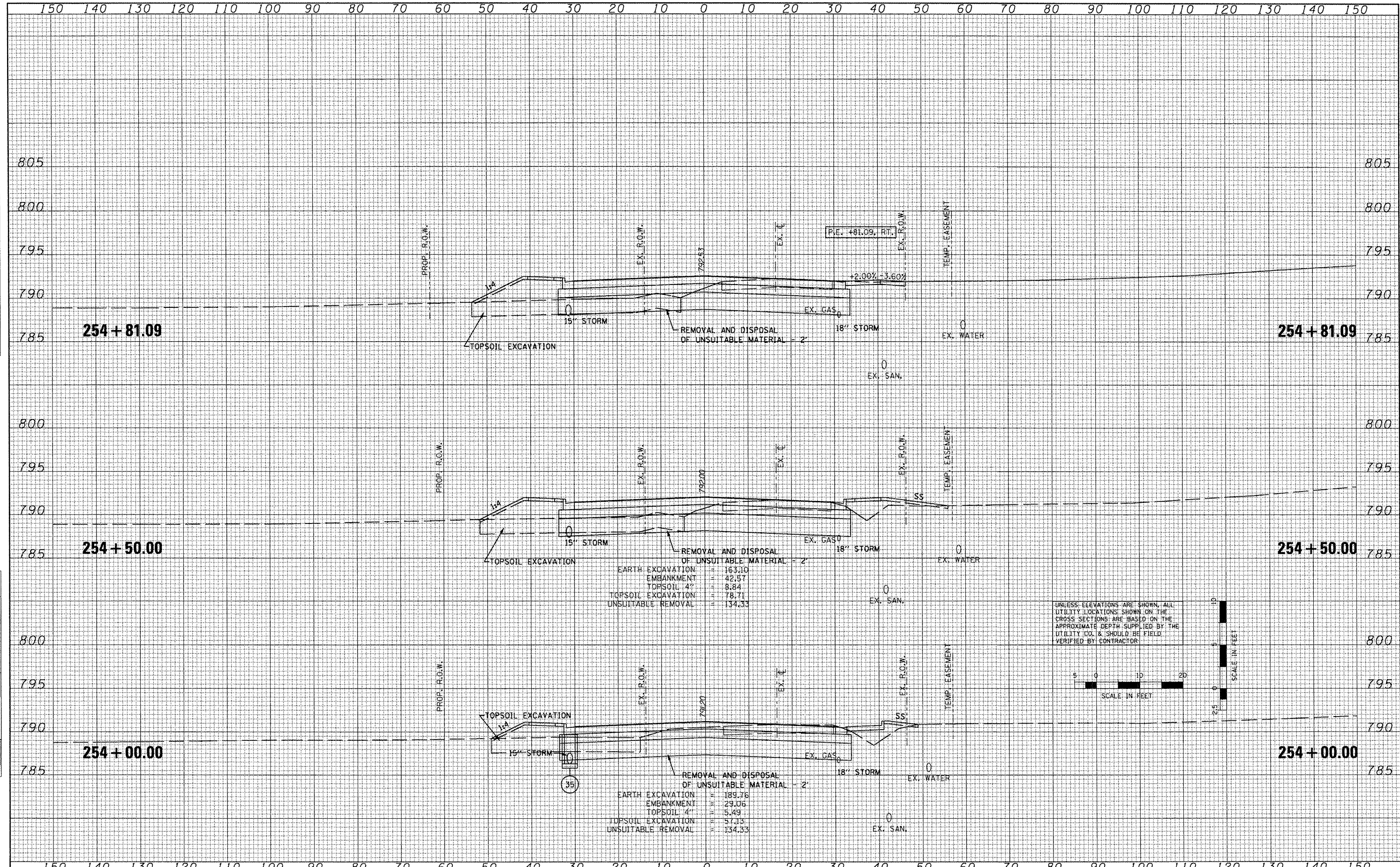


DATE	
BY	
FINAL SURVEY	SURVEYED
NOTE BOOK	PLOTTED
NO.	TEMPLATE
	AREAS CHECKED

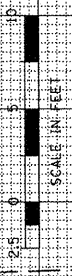
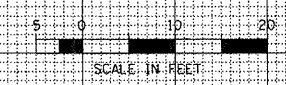
DATE	
BY	
ORIGINAL SURVEY	SURVEYED
NOTE BOOK	PLOTTED
NO.	TEMPLATE
	AREAS CHECKED



EARTH EXCAVATION	=	163.10
EMBANKMENT	=	42.57
TOPSOIL 4"	=	8.84
TOPSOIL EXCAVATION	=	78.71
UNSUITABLE REMOVAL	=	134.33

EARTH EXCAVATION	=	189.76
EMBANKMENT	=	29.06
TOPSOIL 4"	=	5.49
TOPSOIL EXCAVATION	=	57.13
UNSUITABLE REMOVAL	=	134.33

UNLESS ELEVATIONS ARE SHOWN, ALL UTILITY LOCATIONS SHOWN ON THE CROSS SECTIONS ARE BASED ON THE APPROXIMATE DEPTH SUPPLIED BY THE UTILITY CO. & SHOULD BE FIELD VERIFIED BY CONTRACTOR.



FILE NAME =	USER NAME = 100T	DESIGNED -	REVISED -	<b>STATE OF ILLINOIS DEPARTMENT OF TRANSPORTATION</b>	<b>FAP 399 (IL. RTE. 8) CROSS SECTIONS</b>	F.A.P. RTE. 399	SECTION 36 R-7	COUNTY TAZEWELL	TOTAL SHEETS 390	SHEET NO. 363
x:\projects\200803666\dgn\gpk\X5-IL-RT8-sheets.dgn		DRAWN -	REVISED -							
PLOT SCALE = 20.7420 / IN.		CHECKED -	REVISED -							
PLOT DATE = 10/21/2011		DATE - 10-21-11	REVISED -							
SCALE:					SHEET NO. OF SHEETS		STA. 254+00.00 TO STA. 254+81.09		ILLINOIS FED. AID PROJECT	