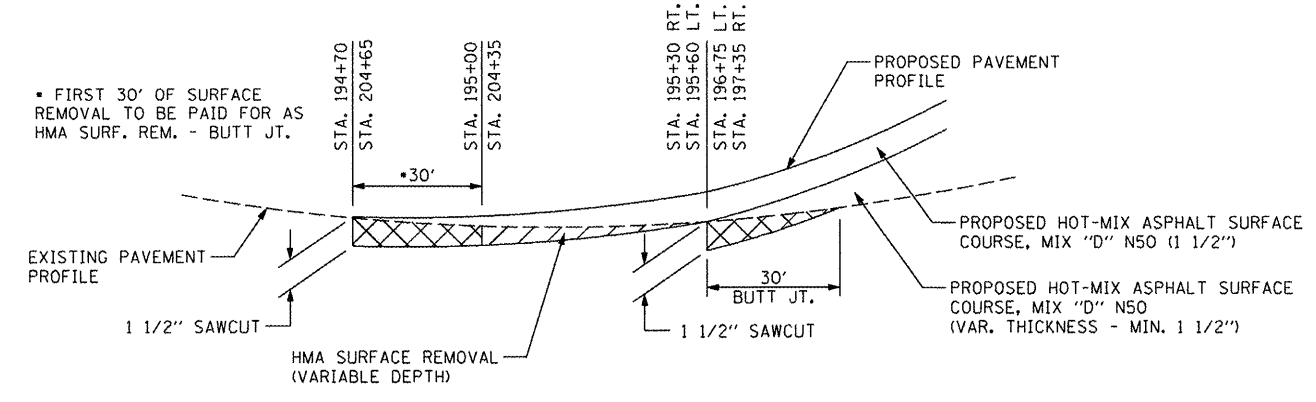
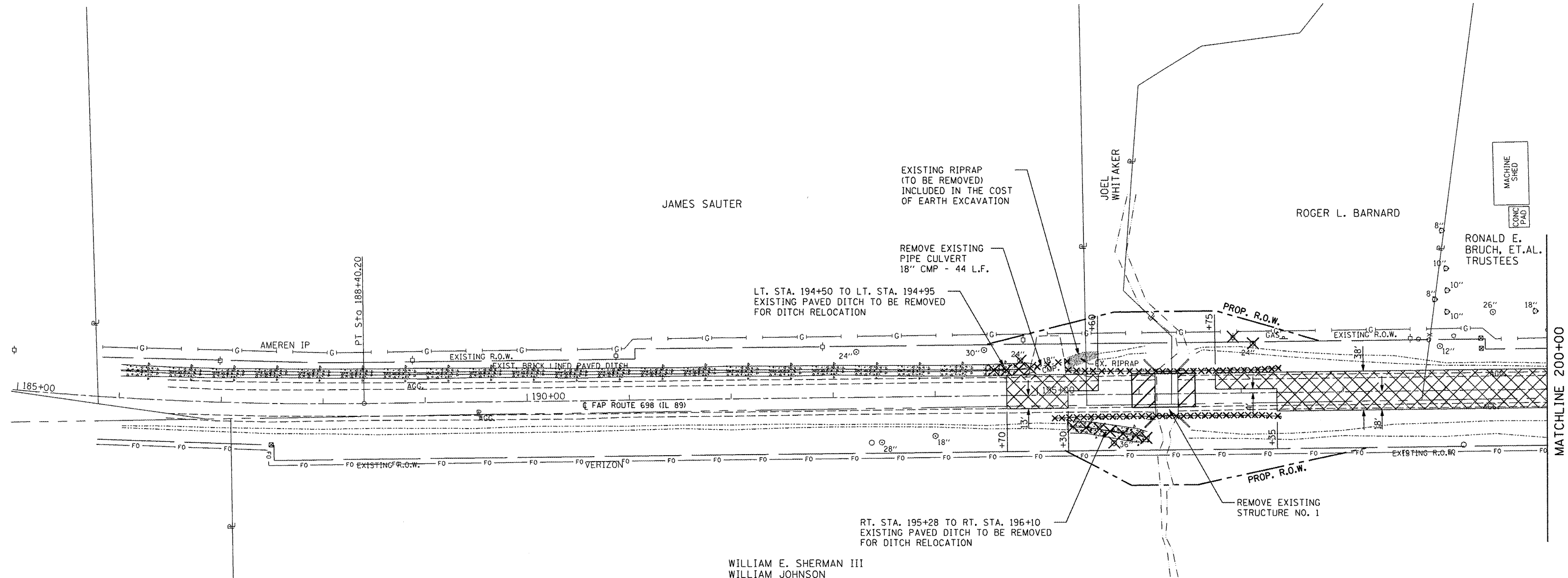




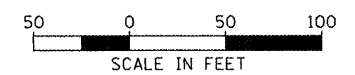


EXISTING GUARDRAIL TO BE REMOVED
 LT. STA. 195+28 TO LT. STA. 197+39
 RT. STA. 195+15 TO RT. STA. 197+39



-  PAVEMENT REMOVAL
STA. 195+93 TO STA. 196+55
-  HOT-MIX ASPHALT SURFACE
REMOVAL, (VARIABLE DEPTH)
(BASED ON CROSS SECTIONS)
-  TREE REMOVAL
-  POWER POLE TO BE RELOCATED
(BY OTHERS)

TREE REMOVAL
 34' LT., STA. 194+84 - 24"
 48' RT., STA. 195+75 - 36"
 48' LT., STA. 197+12 - 24"



FILE NAME =
 ...plens\0468571-shr-rem.dgn
 Johnson, Depp & Ouisenberry
 CONSULTING ENGINEERS
 Springfield, Illinois

USER NAME = #USER	DESIGNED -	REVISED -
PLOT SCALE = 1/8" = 1' IN.	DRAWN -	REVISED -
PLOT DATE = 12/12/2011 09:13:36	CHECKED -	REVISED -
	DATE -	REVISED -

**STATE OF ILLINOIS
 DEPARTMENT OF TRANSPORTATION**

REMOVAL PLANS				
SCALE:	SHEET NO.	OF SHEETS	STA.	TO STA.

F.A.P. RTE.	SECTION	COUNTY	TOTAL SHEETS	SHEET NO.
698	(2) BR-1 & BR-2	PUTNAM	71	17
CONTRACT NO. 68571				
ILLINOIS FED. AID PROJECT				