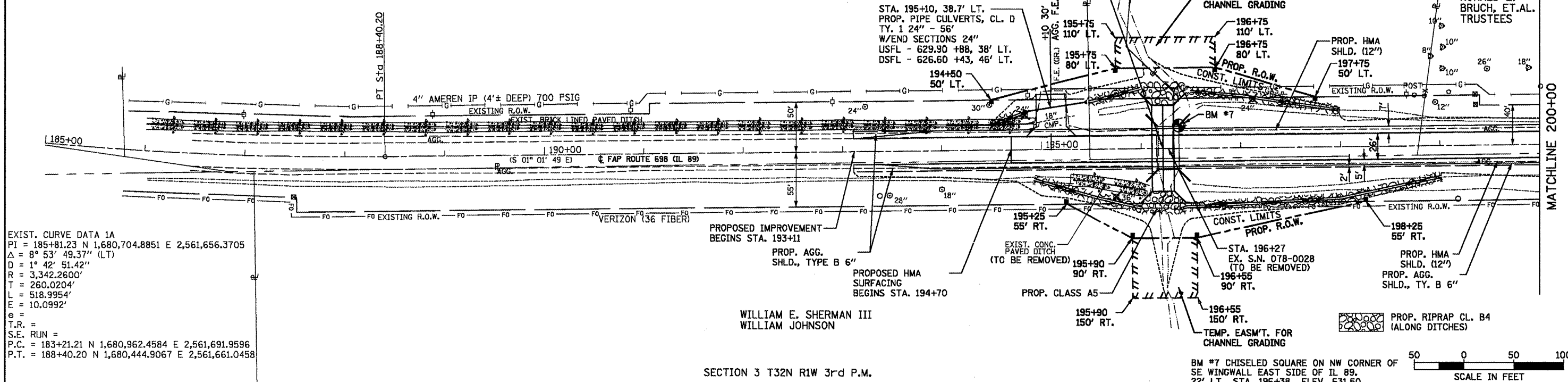


SECTION 2 T32N R1W 3rd P.M.

STA. 196+22 (S.N. 078-2009)
 PROP. DOUBLE RCBC 11' X 10' - 86'
 USFL - 619.00 43' LT.
 DSFL - 618.74 43' RT.

JAMES SAUTER

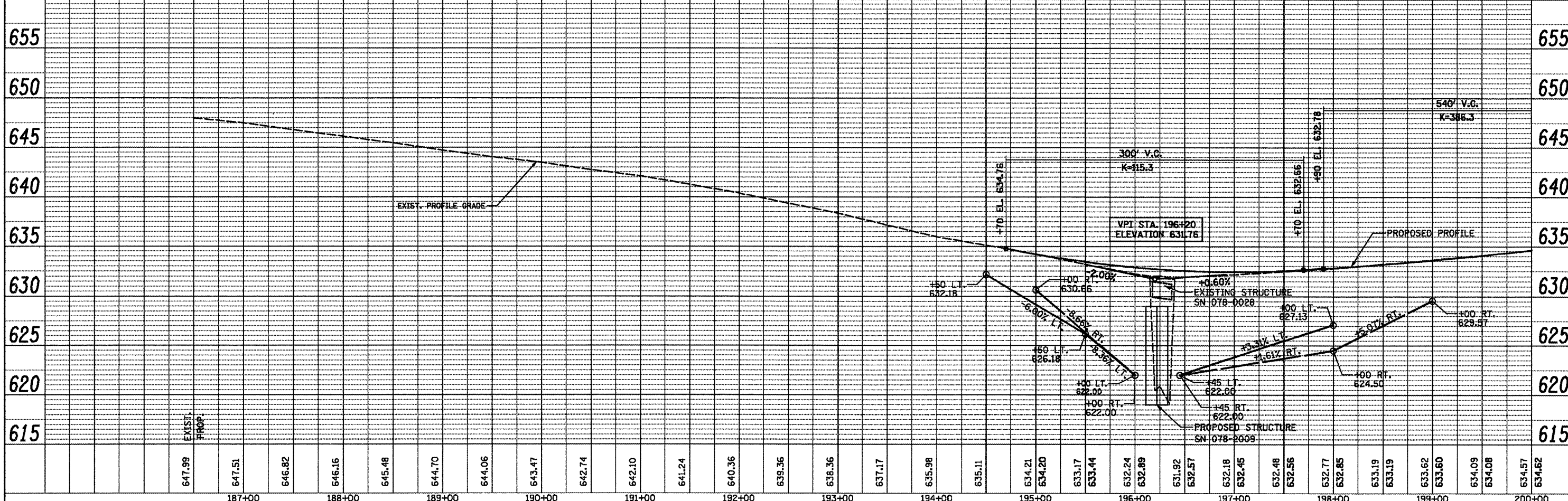
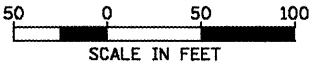


EXIST. CURVE DATA 1A
 PI = 185+81.23 N 1,680,704.8851 E 2,561,656.3705
 Δ = 8° 53' 49.37" (LT)
 D = 1° 42' 51.42"
 R = 3,342.2600'
 T = 260.0204'
 L = 518.9954'
 E = 10.0992'
 e =
 T.R. =
 S.E. RUN =
 P.C. = 183+21.21 N 1,680,962.4584 E 2,561,691.9596
 P.T. = 188+40.20 N 1,680,444.9067 E 2,561,661.0458

SECTION 3 T32N R1W 3rd P.M.

WILLIAM E. SHERMAN III
 WILLIAM JOHNSON

BM #7 CHISELED SQUARE ON NW CORNER OF
 SE WINGWALL EAST SIDE OF IL 89.
 22' LT., STA. 196+38 ELEV. 631.50



FILE NAME =	USER NAME = #USER	DESIGNED -	REVISED -	<p align="center">STATE OF ILLINOIS DEPARTMENT OF TRANSPORTATION</p>	<p align="center">FAP ROUTE 698 (IL 89)</p>	F.A.P. R.T.E.	SECTION	COUNTY	TOTAL SHEETS	SHEET NO.	
...:\Plans\1468571-ehf-p1npr.f.dgn		DRAWN -	REVISED -			698	(2) BR-1 & BR-2	PUTNAM	71	19	
	PLOT SCALE = 1/8" = 100' / IN.	CHECKED -	REVISED -			SCALE 1" = 50'	SHEET NO. OF SHEETS	STA. 185+00.00 TO STA. 200+00.00	FED. ROAD DIST. NO.	ILLINOIS FED. AID PROJECT	CONTRACT NO. 68571
	PLOT DATE = 12/13/2011 18:43:46	DATE -	REVISED -								

PLAN	BY	DATE
REVISIONS		
NO.	DESCRIPTION	DATE

PROFILE	BY	DATE
REVISIONS		
NO.	DESCRIPTION	DATE