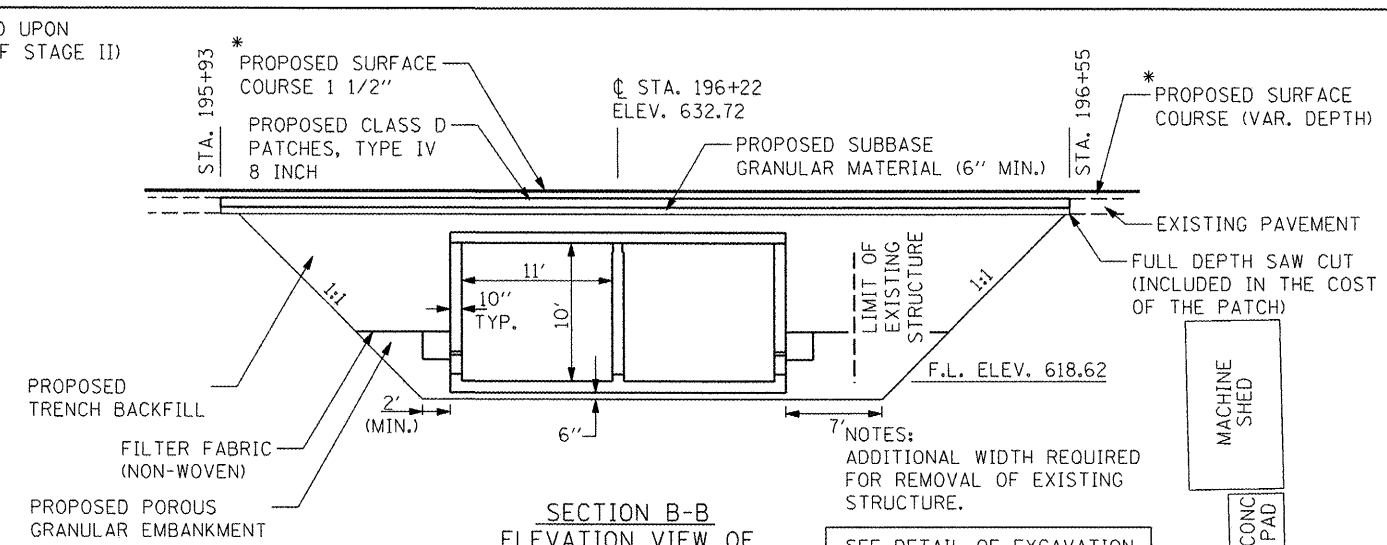


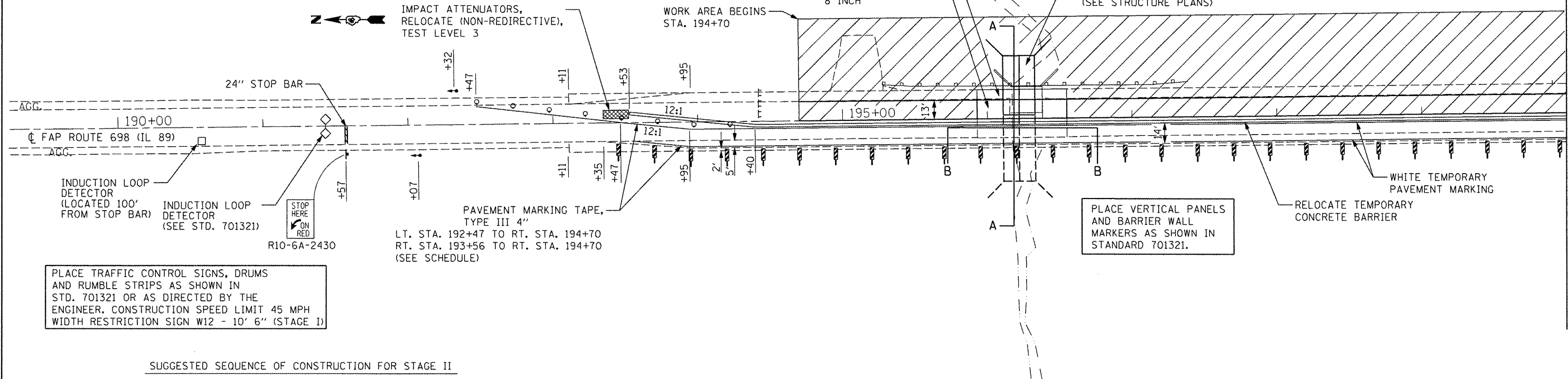
NOTES:
SEE STRUCTURE PLANS FOR ADDITIONAL DETAILS.
SEE DETAIL OF EXCAVATION AND BACKFILL FOR BOX CULVERTS FOR ADDITIONAL DETAILS.

SECTION A-A
VIEW THROUGH
11' X 10' DOUBLE RCBC
@ STA. 196+22
(NO SCALE)



NOTES:
ADDITIONAL WIDTH REQUIRED FOR REMOVAL OF EXISTING STRUCTURE.
SEE DETAIL OF EXCAVATION AND BACKFILL FOR BOX CULVERTS FOR ADDITIONAL DETAILS.

SECTION B-B
ELEVATION VIEW OF
11' X 10' DOUBLE RCBC
@ STA. 196+22
(NO SCALE)



PLACE TRAFFIC CONTROL SIGNS, DRUMS AND RUMBLE STRIPS AS SHOWN IN STD. 701321 OR AS DIRECTED BY THE ENGINEER. CONSTRUCTION SPEED LIMIT 45 MPH WIDTH RESTRICTION SIGN W12 - 10' 6\"/>

SUGGESTED SEQUENCE OF CONSTRUCTION FOR STAGE II

1. SETUP STAGE II TRAFFIC CONTROL AS PER STANDARD 701321 AND THESE DETAILS. MAINTAINING ALL TRAFFIC ON THE SOUTHBOUND LANE.
2. REMOVE THE STAGE II PORTIONS OF THE EXISTING PAVEMENT, STRUCTURES AND GUARDRAIL.
3. CONST THE STAGE II PORTION OF THE PROPOSED CULVERTS.
4. CONST THE STAGE II PORTION OF THE PATCHES AND HMA SHOULDER (12\"/>

- ☐ TYPE III BARRICADE WITH FLASHING LIGHTS
- ⚡ SIGN
- ⊙ DRUM WITH STEADY BURNING LIGHTS
- ⬆ TRAFFIC SIGNAL
- ▨ DOUBLE VERTICAL PANEL

SEQUENCE OF OPERATIONS									
PHASE	A			B			C		
INTERVAL	1	2	3	4	5	6	7	8	9
SOUTHBOUND	G	Y	R	R	R	R	R	R	R
ENTRANCE	R	R	R	G	Y	R	R	R	R
NORTHBOUND	R	R	R	R	R	R	G	Y	R

