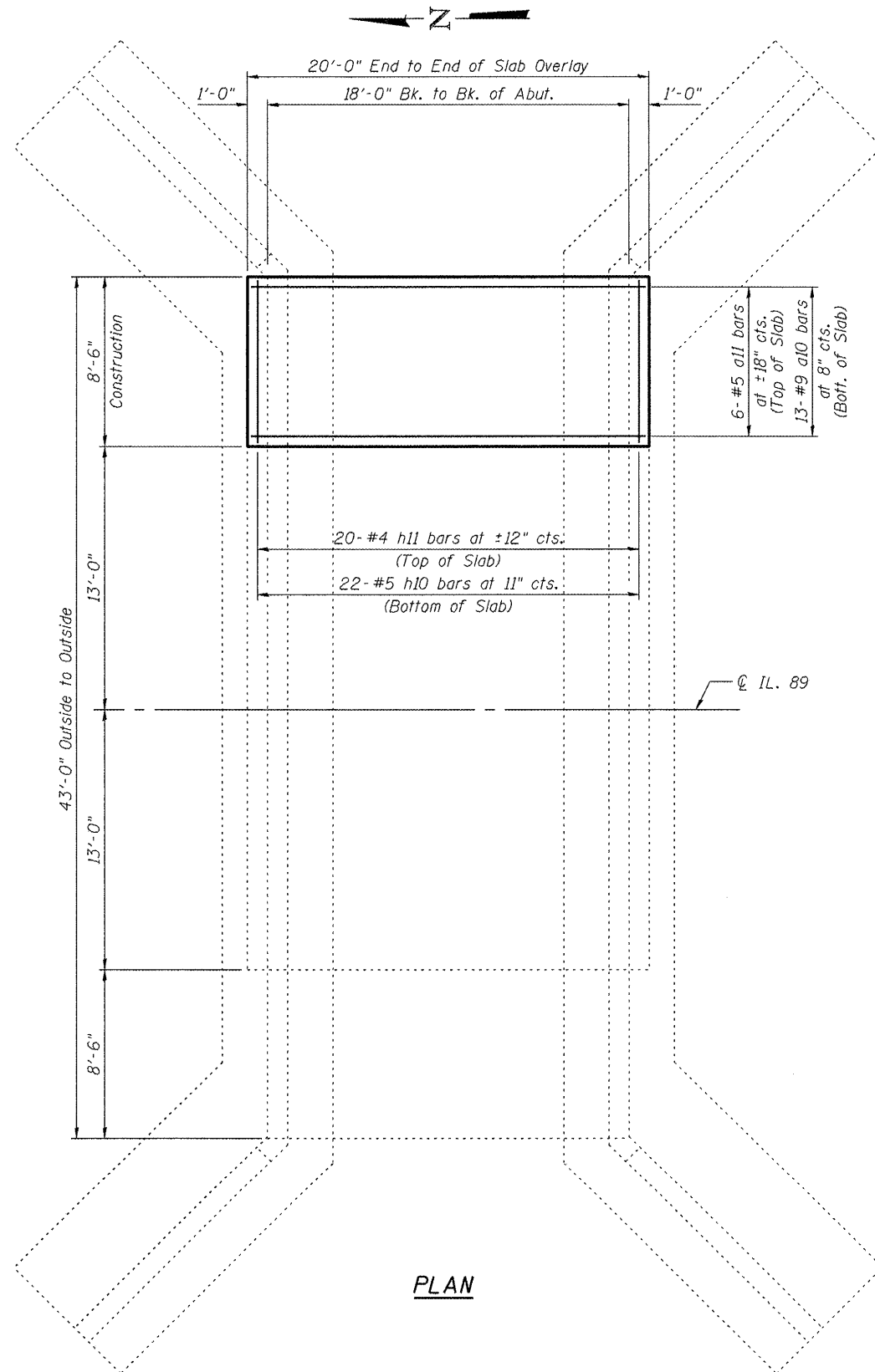


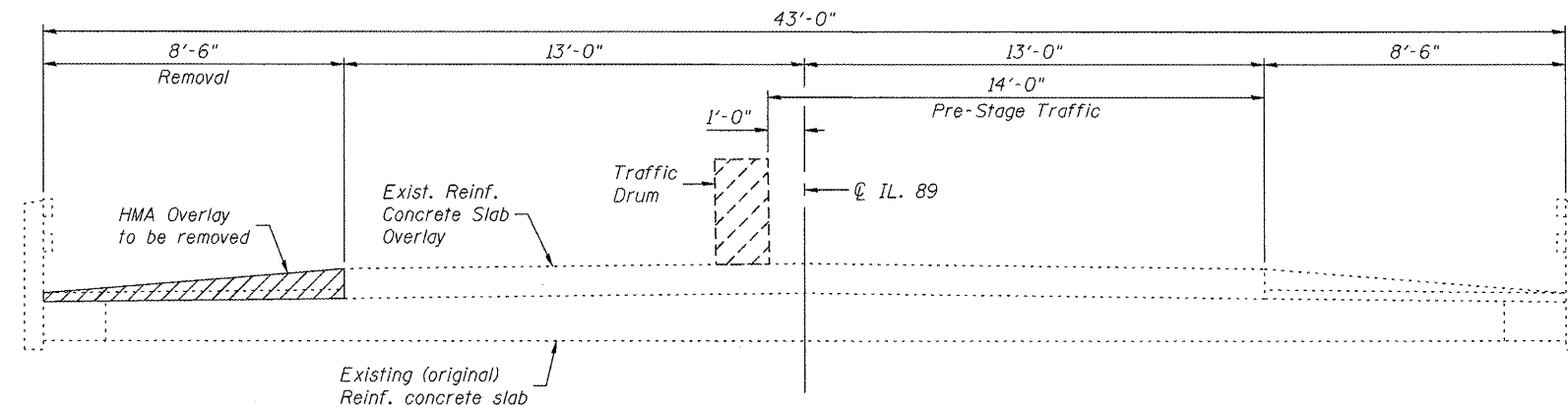
Notes:  
Temporary slab overlay shall be installed prior to Stage 1.

Tilt a10 bars as required to maintain clearance.

The deck surface shall have its final finish tined according to Article 420.09(e)(1) of the Standard Specifications. Cost included with Concrete Superstructure.

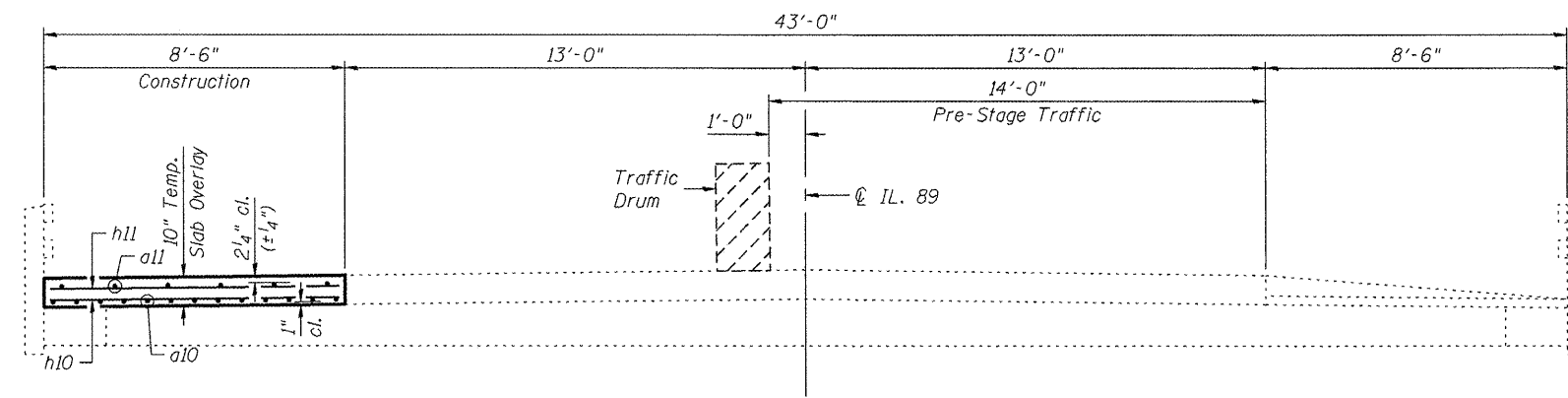


PLAN



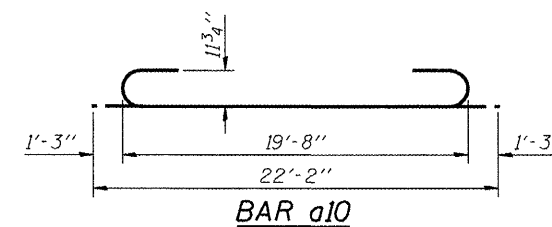
EXISTING CROSS-SECTION

(Looking South)



PROPOSED CROSS-SECTION

(Looking South)



BAR a10

BILL OF MATERIAL

Bar	No.	Size	Length	Shape
a10	13	#9	22'-2"	
a11	6	#5	19'-8"	—
h10	22	#5	8'-2"	—
h11	20	#4	8'-2"	—
HMA Surface Removal (Deck)			Sq. Yd.	17
Concrete Superstructure			Cu. Yd.	5.3
Reinforcement Bars			Pound	1400

FILE: J:\JDD\10206 L 89 Airforks Creek\_P12\2-rdc-S1078200\_078200-68571-004-tempslab.dgn

SAVE DATE: 12/9/2011

FILE NAME = ...078200-68571-004-tempslab.dgn  
 USER NAME = DCD  
 DESIGNED - DCD  
 CHECKED - LKS  
 DRAWN - P. Ray  
 CHECKED - DCD

DESIGNED - DCD	REVISD -
CHECKED - LKS	REVISD -
DRAWN - P. Ray	REVISD -
CHECKED - DCD	REVISD -

STATE OF ILLINOIS  
DEPARTMENT OF TRANSPORTATION

TEMPORARY SLAB OVERLAY  
STRUCTURE NO. 078-2010

SHEET NO. 4 OF 8 SHEETS

F.A.P. RTE.	SECTION	COUNTY	TOTAL SHEETS	SHEET NO.
698	(2) BR-1 & BR-2	PUTNAM	71	43
STA. 203+04			CONTRACT NO. 68571	
ILLINOIS FED. AID PROJECT				