

STATE OF ILLINOIS
 DEPARTMENT OF PUBLIC WORKS AND BUILDINGS
 DIVISION OF HIGHWAYS
**PLANS FOR PROPOSED
 STATE AID HIGHWAY**

ROUTE NO.	SEC.	COUNTY	POST MILE	PLAN
3A	2B	PUTNAM	33	

INDEX OF SHEETS

SECTION 2A-NRH

SHEET No. 1	TITLE PAGE
2	TYPICAL CROSS SECTIONS
3	PLAN & PROFILE, STAS. 36+00 TO 50+00
4	30+00 - 32+00
5	32+00 - 34+00
6	34+00 - 36+00
7	36+00 - 38+00
8	38+00 - 40+00
9	40+00 - 42+00
10	42+00 - 44+00
11	44+00 - 46+00
12	46+00 - 48+00
13	48+00 - 50+00
14	STANDARD 1514-1516
15	1535-1635
16	1665-B.C.R.-1
17	SLOPE WALL
18	SPECIAL CULVERT DESIGN, STAS. (25+50-129+00) (R.L.T.)
19	113+81-124+43-129+71
20	97+52
21	145+30-200+48-233+04-247+56
22	257+21
23	LOCATION PLAN OF CULVERT AT STA. 148+30

**S. A. ROUTE 3A-SEC. 2B-NRH-BUREAU CO.
 U.S. PUBLIC WORKS HIGHWAY
 PROJECT NRH 230A ~ 1935**

FROM A POINT NEAR THE S.E. COR. OF THE N.E. 1/4 OF SECTION 3, T.15N, R.11E, OF THE 4TH PM.
 TO A POINT NEAR THE SOUTH EAST CORNER OF THE N.E. 1/4 OF SECTION 10, T.32N, R.1W, OF THE 3RD PM.

SECTION 2B-NRH

SHEET No. 1	TITLE PAGE
1	PLAN AND PROFILE, STATIONS 50+00 TO 80+00
2	80+00 - 110+00
3	110+00 - 140+00
4	140+00 - 200+00
5	200+00 - 255+00
52	SPECIAL BRIDGE DESIGN, STATION 78+00 LT.
53	86+50 LT.
54-56 INCL.	88+25 CURVES (263-33 SHEETS)
57	196+27
58	203+22

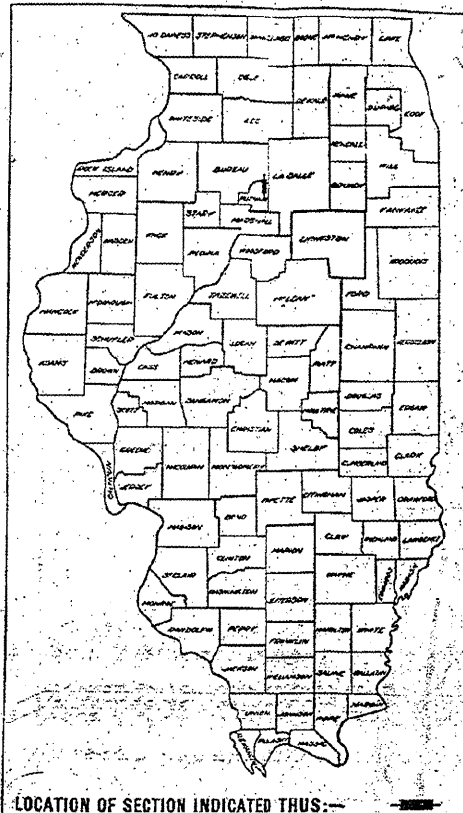
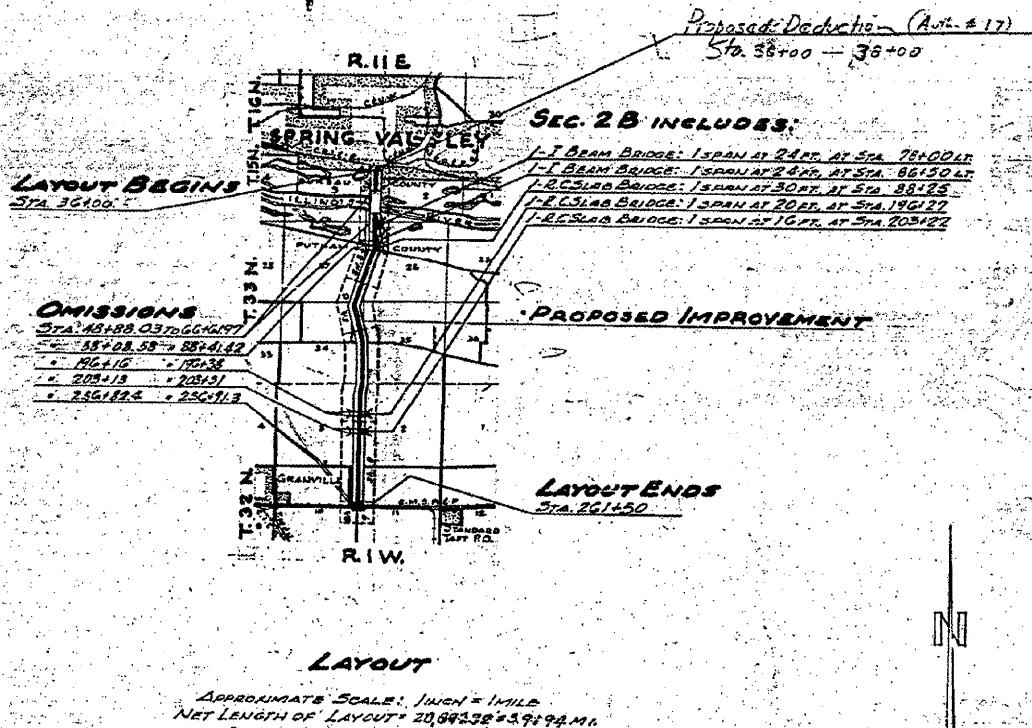
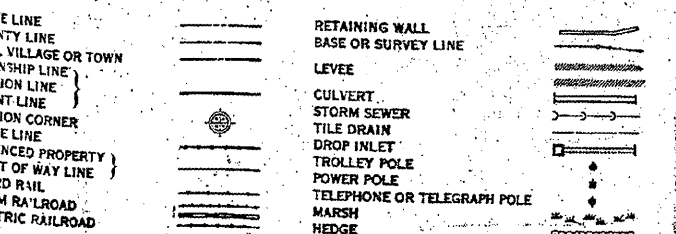
SUMMARY OF QUANTITIES

SECTION 2A-NRH

42.02 cu yds	NEEDS PULLING
115.00 cu yds	EARTH EXCAVATION
500 cu yds	EDGE EXCAVATION
111.54 cu yds	CHANNEL EXCAVATION
370.5 cu yds	CLASS X CONCRETE
25.93 cu yds	CONCRETE
12,226 cu yds	SETTLEMENT OF EMBANKMENTS
250 cu yds	TIE DRAINS, 18 IN.
220 cu yds	TIE DRAINS, 30 IN.
2 cu yds	CATCH BASINS, TYPE C, WITH TYPS GRATE
2 cu yds	CATCH BASINS, TYPE B, WITH TYPS GRATE
400.50 cu yds	REINFORCEMENT BARS
4 cu yds	CONCRETE TO BE ADJUSTED
100 cu yds	FURNISHING & ERECTING RIGHT OF WAY MARKERS
2	SECTION MARKERS
244 cu yds	PIPE CULVERTS - 18"
354 cu yds	PIPE CULVERTS - 24"
28 cu yds	PIPE CULVERTS - 30"
680 cu yds	CEMENT

SECTION 2B-NRH

3220 lbs	STRUCTURAL STEEL
1020 lbs	HARDWARE
730 lbs	GALVANIZED WROUGHT IRON RODS
6600	CROSCOTED LUMBER
1775 sq. yds	CROSCOTED PLANK FLOOR
1125 cu yds	FURNISHING TREATED PILES - 20.1 TO 35 FT LONG
5200 cu yds	FURNISHING UNTREATED PILES - UP TO 20 FT LONG
300 cu yds	FURNISHING UNTREATED PILES - 20.1 TO 35 FT LONG
8200 cu yds	DRIVING PILES - UP TO 20 FT LONG
1425 cu yds	DRIVING PILES - 20.1 TO 35 FT LONG
5925 cu yds	CLASS X CONCRETE
5500 cu yds	MANRAIL CONCRETE
11 cu yds	REINFORCEMENT BARS
6 cu yds	FLOOR DRAINS
6 cu yds	REMOVAL OF OLD BRIDGE
95.5 cu yds	TEST PILES
	CEMENT



STATE OF ILLINOIS
 DEPARTMENT OF PUBLIC WORKS AND BUILDINGS
 DIVISION OF HIGHWAYS

PROJECT: 3A-2B-NRH

EXAMINER: [Signature]

APPROVED: [Signature]

RECOMMENDED FOR APPROVAL

DISTRICT ENGINEER

RECOMMENDED FOR APPROVAL

CHIEF ENGINEER

APPROVED

CHIEF

Sheet 2-53 sec. 2B-NRH STA: 203+22

078-0029