

AS BUILT

STATE OF ILLINOIS  
DEPARTMENT OF PUBLIC WORKS AND BUILDINGS  
DIVISION OF HIGHWAYS  
PLANS FOR PROPOSED  
STATE BOND ISSUE HIGHWAY

INDEX OF SHEETS

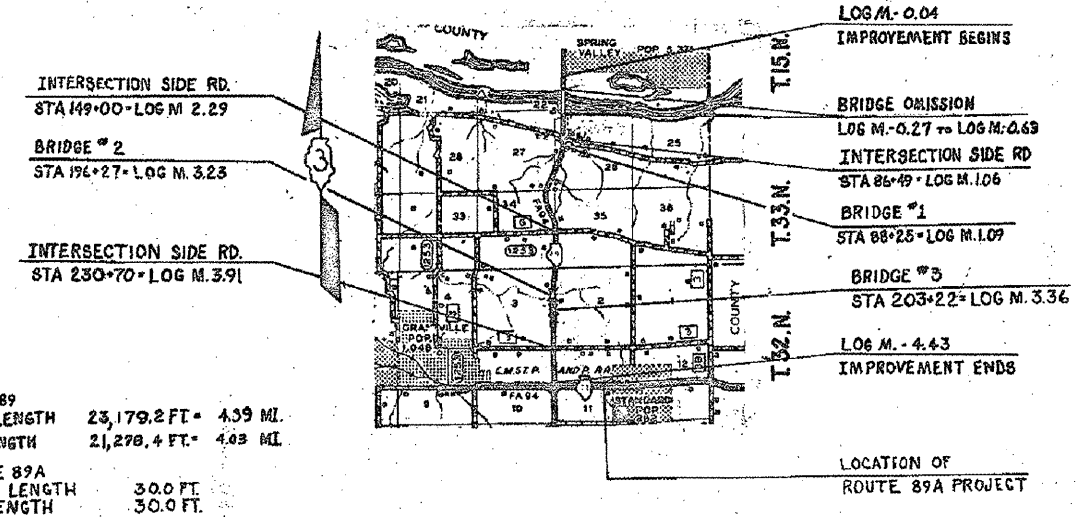
Sheet No.	Description
1	Title Sheet - Index of Sheets
2	General Notes - Details
3	Summary of Quantities
4	Typical Sections, Section 103 T & 2W & RS)
5	Details
6	Location and Quantity Tables
7	Bridge #1
8	Bridge #2
9	Bridge #3
10	Bridge Details & Bridge Quantities
11	Type N Steel Railing
12	Guard Rail Attachment Detail
13	Drainage Installation Schedule
14-17	Sign Schedule
18-34	Cross Sections, Section 2W & RS)
35	Cross Sections, Section 103 T
	Standard 1933-3
	Standard 1935-3
	Standard 1939
	Standard 1913-5
	Standard 2117-1
	Standard 2120-3
	Standard 2143-3
	Standard 2149-8
	Standard 2171
	Standard 2214-2
	Standard 2228-1
	Standard 2229-1
	Standard 2230-7
	Standard 2231-3
	Standard 2258-1
	Standard 2298-2
	Standard 2299-1
	Standard 2300
	Standard 2302-1
	Standard 2303-2
	Standard 2304-1
	Standard 2305-1
	Standard 2306-2
	Standard 2307-2
	Standard 2309-1
	Standard 2311-3
	Standard 2319-1
	Standard 2320-2

89A 103T PUTNAM			
SECTION	COUNTY	TOTAL SHEETS	SHEET NO.
89	PUTNAM-BUREAU	35	1



F.A. 94 (ILL. 89)  
SEC. 2 (W&RS)  
PUTNAM-BUREAU COUNTIES  
C-93-070-70  
S.B.I. 89A (Rte 71)  
SEC. 103T  
PUTNAM COUNTY  
R.I.E.

AS BUILT



ROUTE 89  
GROSS LENGTH 23,179.2 FT. 4.39 MI.  
NET LENGTH 21,298.4 FT. 4.03 MI.  
ROUTE 89A  
GROSS LENGTH 30.0 FT.  
NET LENGTH 30.0 FT.

SCALE 1" = 1 MI. (APPROX.)

RT. 89 1971 ADT-3657-AREA SERVICE  
RT. 89A 1971 ADT-1800-AREA SERVICE

STATE OF ILLINOIS DEPARTMENT OF PUBLIC WORKS AND BUILDINGS DIVISION OF HIGHWAYS	
DESIGNED BY	<i>[Signature]</i>
EXAMINED BY	<i>[Signature]</i>
DRAWN BY	<i>[Signature]</i>
APPROVED BY	<i>[Signature]</i>
DATE	11/02/11

APPROVED  
FOR STRUCTURAL WORK ONLY  
*[Signature]*

KNUTSON

CONTRACT NO. 28637

BUREAU-PUTN. COUNTY SECTION 2(W&RS) S. B. I. ROUTE 89  
PUTNAM COUNTY SECTION 103 T S. B. I. ROUTE 89A