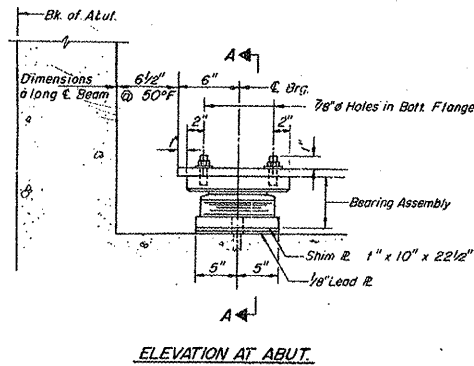
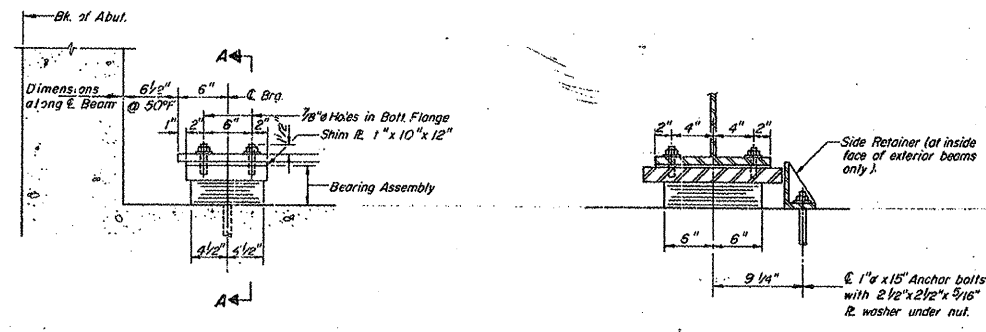
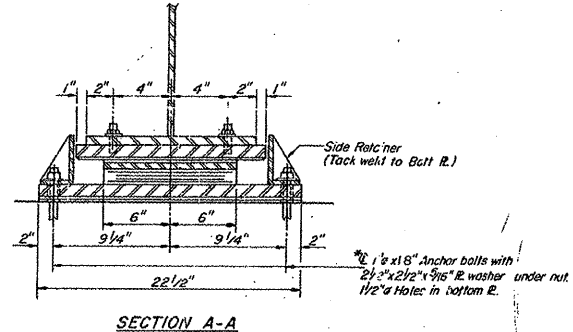


Location 6 S.N. 102-0008 Information Only

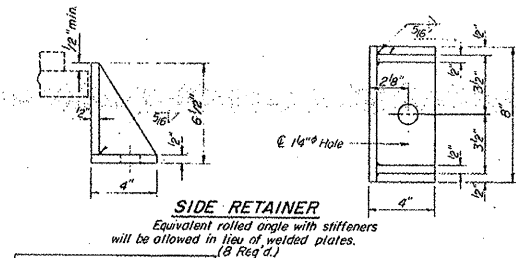
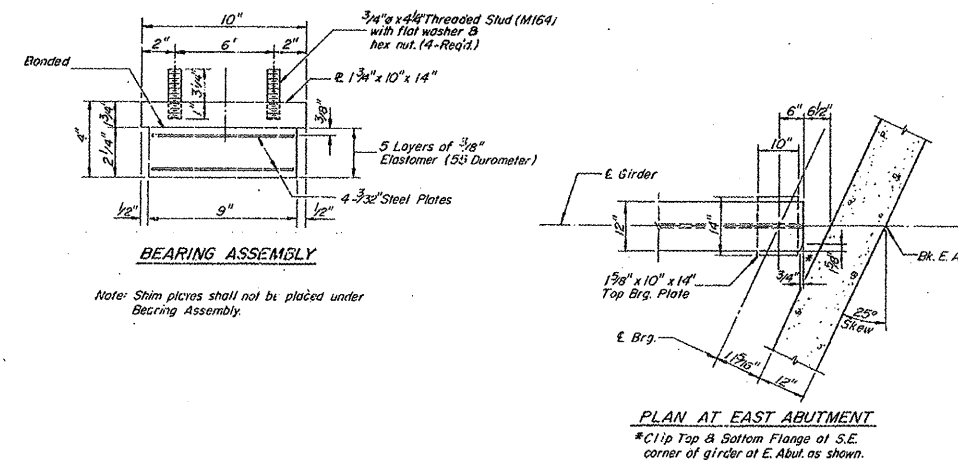
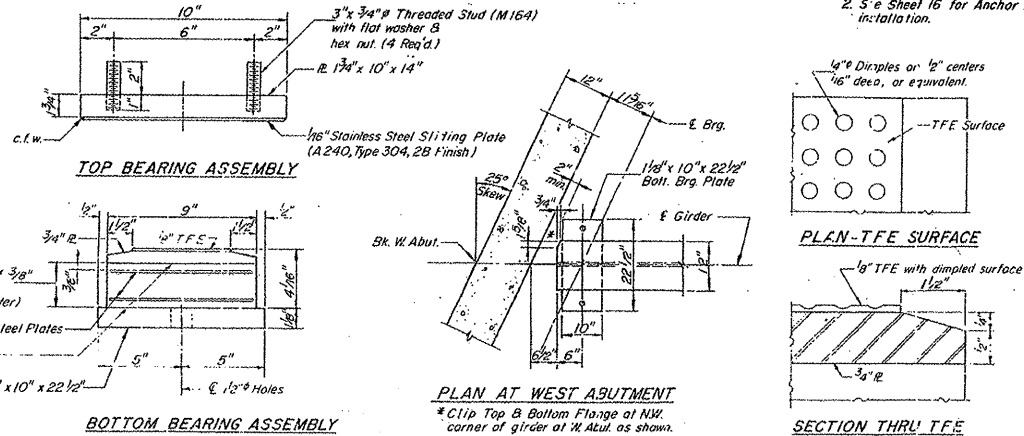


**TYPE II TFE ELASTOMERIC EXP BRG.
AT WEST ABUTMENT**

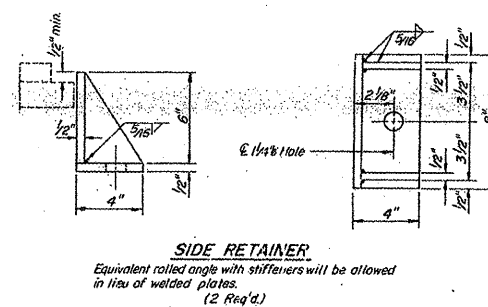
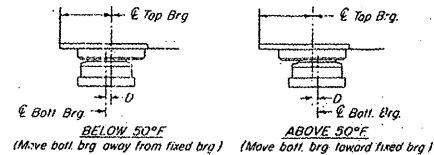


**TYPE I ELASTOMERIC EXP BRG.
AT EAST ABUTMENT**

Notes:
 1. After new girders have been erected holes of expansion bearings shall be drilled and anchor bolts grouted in place.
 2. 5/8" Sheet 16 for Anchor Bolt installation.



DESIGNED	V.S.N.
CHECKED	K.L.F.



BILL OF MATERIAL

Item	Unit	Total
Elastomeric Bearing Assembly Type I	Each	4
Elastomeric Bearing Assembly Type II	Each	4

ABUTMENT BEARING DETAILS FOR NEW GIRDERS

U.S. 24 OVER PANTHER CREEK
 FAP. 49, SECTION 32R-BR
 WOODFORD COUNTY
 STA. 2497+85

FILE NAME = 68A62 Material.dgn	USER NAME = AdodaSA	DESIGNED -	REVISED -
PLOT SCALE = 1/4" = 1'		DRAWN -	REVISED -
PLOT DATE = 12/24/2011		CHECKED -	REVISED -
		DATE -	REVISED -

STATE OF ILLINOIS
 DEPARTMENT OF TRANSPORTATION

SCALE: _____	SHEET _____ OF _____ SHEETS	STA. _____ TO STA. _____
--------------	-----------------------------	--------------------------

F.A. RTE.	SECTION	COUNTY	TOTAL SHEETS	SHEET NO.
var	04 Materialing 2012	Marshall-woodford	21	21
CONTRACT NO. 68A62			ILLINOIS FED. AID PROJECT	