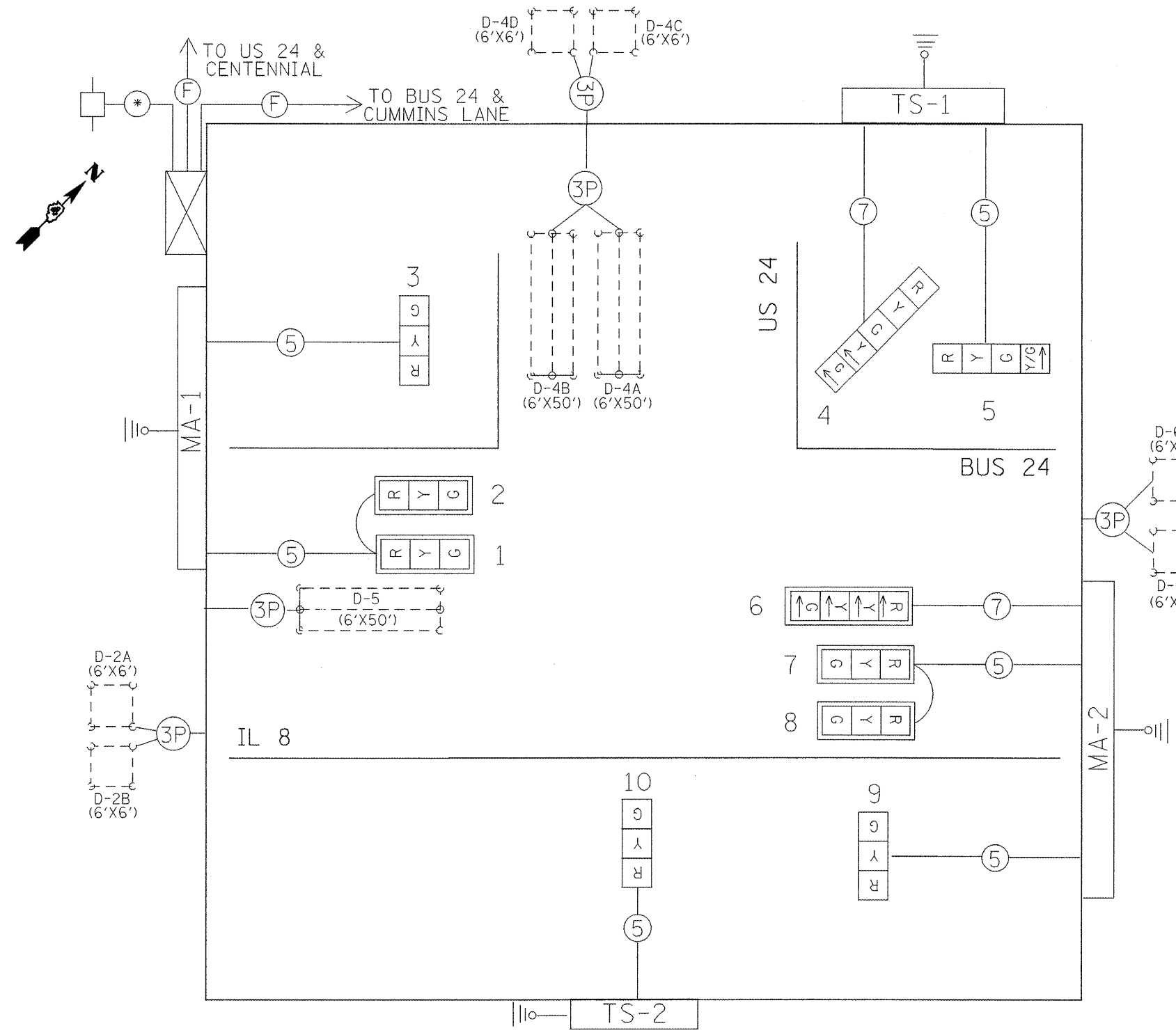
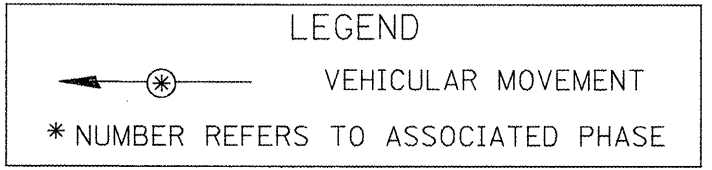
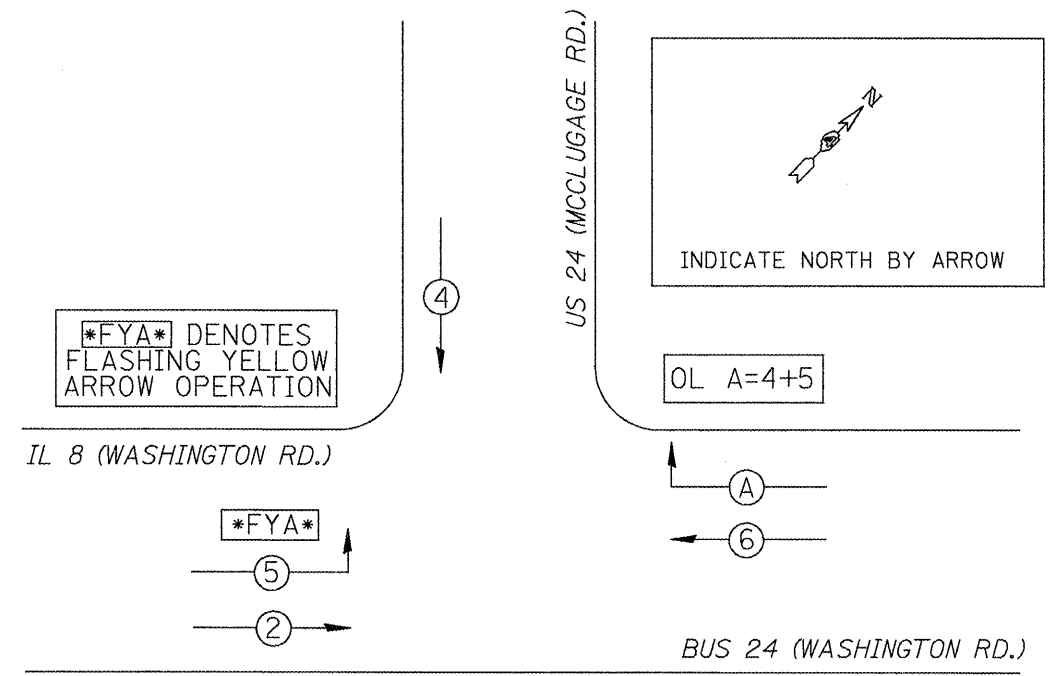


EXISTING CABLE DIAGRAM



EXISTING PHASE DIAGRAM

NAME OF INTERSECTION US 24 & IL 8/BUSINESS 24
 EXISTING CONTROLLER: SIEMENS SEPAC M52 (TS-2)
 TYPE IV CABINET, TS-1 BACKPANEL



TRAFFIC SIGNALS LEGEND

- EX. CONTROLLER (SIGNAL)
- #18 3-PR DETECTOR LOOP CABLE
- EX. DETECTOR LOOP (6'X6')
- EX. 3 SEC. SIGNAL HEAD W/BACKPLATE
- 5/C NO. 14 SIGNAL CABLE
- EX. DETECTOR LOOP (QUADRAPOLE)
- EX. 3 SEC. SIGNAL HEAD
- 7/C NO. 14 SIGNAL CABLE
- EX. SERVICE INSTALLATION
- EX. GROUND/SAFETY BOND

NOT TO SCALE
 TRAFFIC SIGNALS
 SHEET 3 OF 10

FILE NAME =	USER NAME = boyer.mj	DESIGNED -	REVISED -	STATE OF ILLINOIS DEPARTMENT OF TRANSPORTATION	EXISTING TRAFFIC SIGNAL CABLE AND PHASE DIAGRAMS US 24 (MCCLUGAGE RD.) & IL 8 /BUS 24 (WASHINGTON RD.)	F.A.P. RTE. =	SECTION	COUNTY	TOTAL SHEETS	SHEET NO.
68A66 - Business 24 IL 8 Traffic Signals	(Final 12-16-11).dgn	DRAWN -	REVISED -		399	(35,36)N-1	TAZEWELL	60	32	
PLOT SCALE = 60,2740' / 1" =	CHECKED -	REVISED -	REVISED -		SCALE: SHEET OF SHEETS STA. TO STA.		CONTRACT NO. 68A66			
PLOT DATE = 12/16/2011	DATE -	REVISED -	REVISED -		ILLINOIS FED. AID PROJECT					