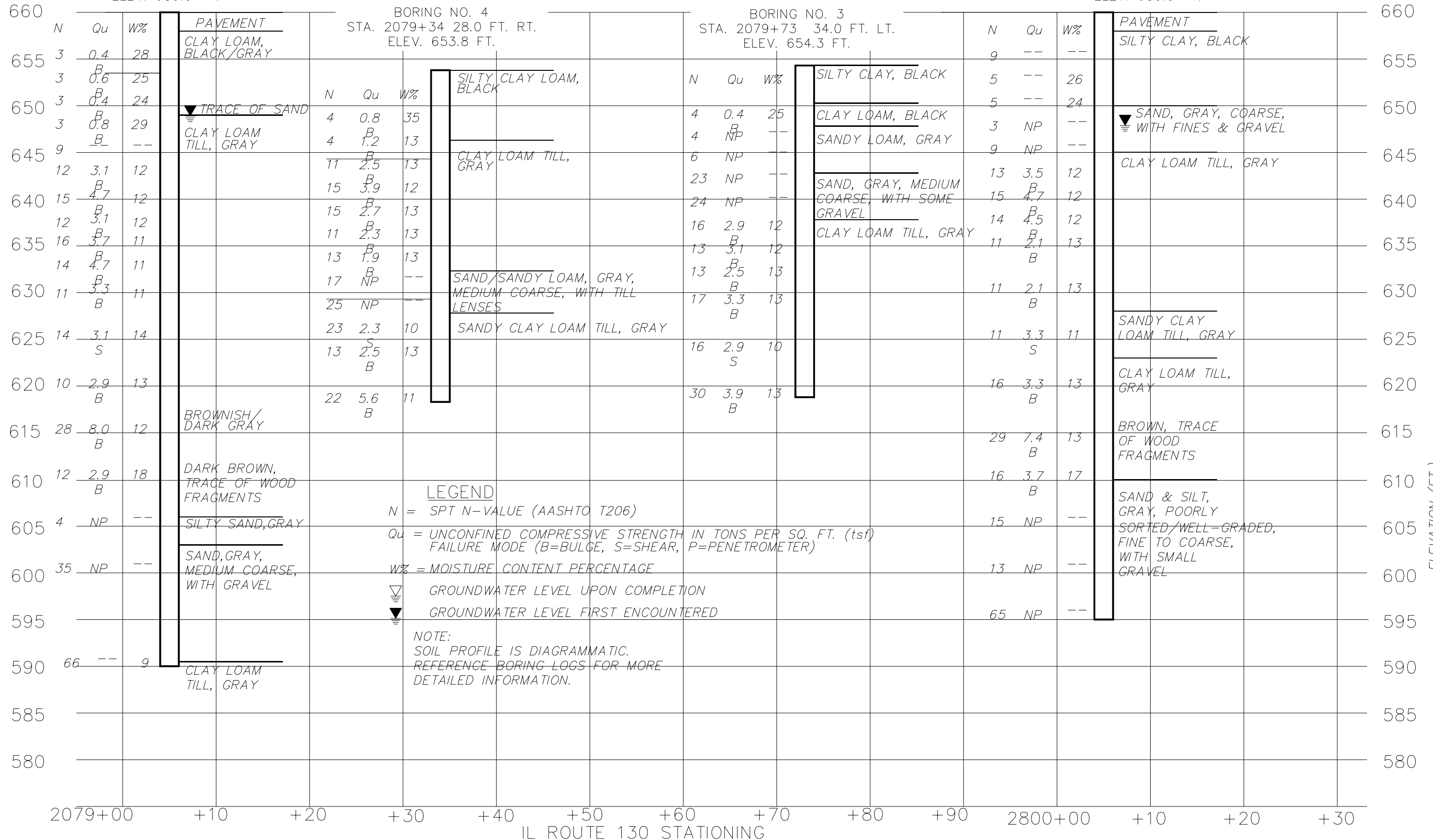


BORING NO. 1
 STA. 2079+06 6.0 FT. RT.
 ELEV. 659.9 FT.

BORING NO. 2
 STA. 2080+05 7.0 FT. LT.
 ELEV. 659.9 FT.



BORING NO. 4
 STA. 2079+34 28.0 FT. RT.
 ELEV. 653.8 FT.

BORING NO. 3
 STA. 2079+73 34.0 FT. LT.
 ELEV. 654.3 FT.

LEGEND
 N = SPT N-VALUE (AASHTO T206)
 Qu = UNCONFINED COMPRESSIVE STRENGTH IN TONS PER SQ. FT. (tsf)
 FAILURE MODE (B=BULGE, S=SHEAR, P=PENETROMETER)
 W% = MOISTURE CONTENT PERCENTAGE

▽ GROUNDWATER LEVEL UPON COMPLETION
 ▼ GROUNDWATER LEVEL FIRST ENCOUNTERED

NOTE:
 SOIL PROFILE IS DIAGRAMMATIC.
 REFERENCE BORING LOGS FOR MORE
 DETAILED INFORMATION.

HURST-ROSCHKE ENGINEERS, INC.
 HILLSBORO, ILLINOIS 62049
 (217)532-3959 FAX (217)532-3212
 HR JOB # 190-1580



FILE NAME =	USER NAME =	DESIGNED - MEE	REVISED -
		CHECKED - MEE	REVISED -
	PLOT SCALE =	DRAWN - RG	REVISED -
	PLOT DATE =	CHECKED - DHK	REVISED -

STATE OF ILLINOIS
 DEPARTMENT OF TRANSPORTATION

SUBSURFACE DATA PROFILE
 STRUCTURE NO. 010-0286
 SHEET NO. 19 OF 19 SHEETS

F.A.P. RTE.	SECTION	COUNTY	TOTAL SHEETS	SHEET NO.
808	94BR-1	CHAMPAIGN	50	32
CONTRACT NO. 705B2			ILLINOIS FED. AID PROJECT	