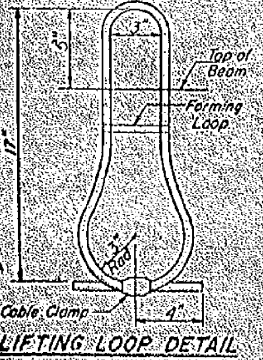
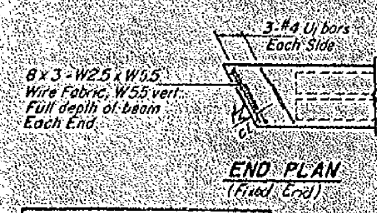
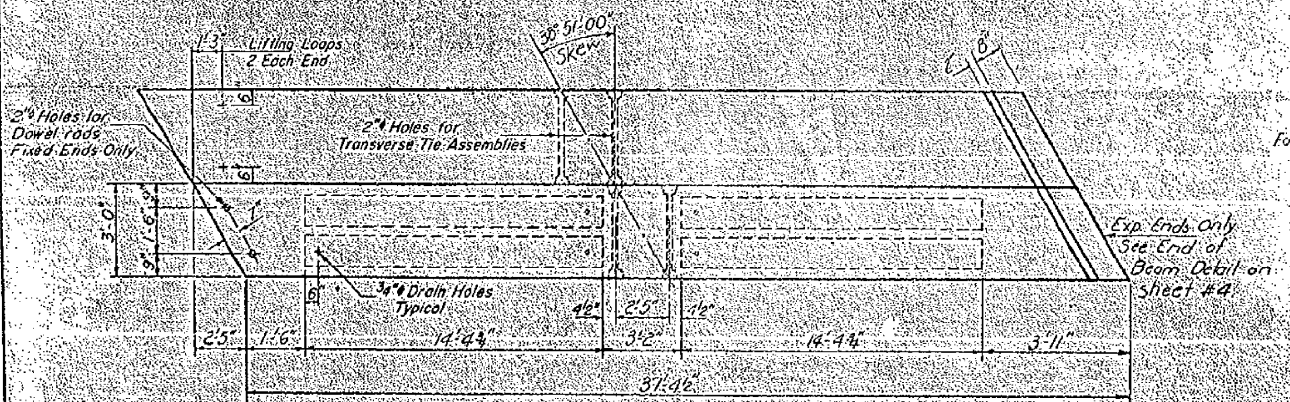
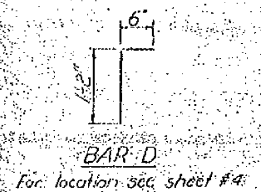
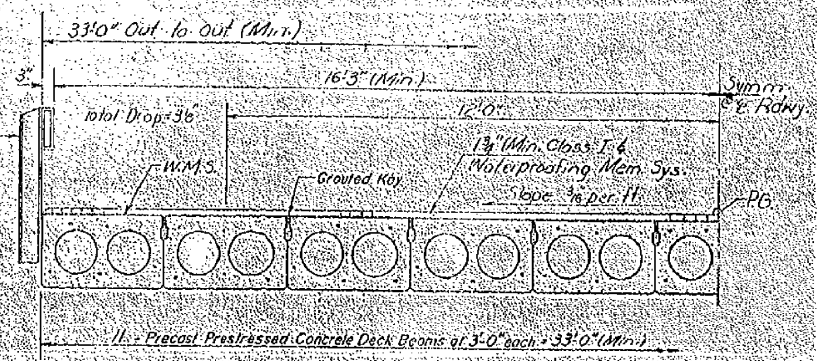
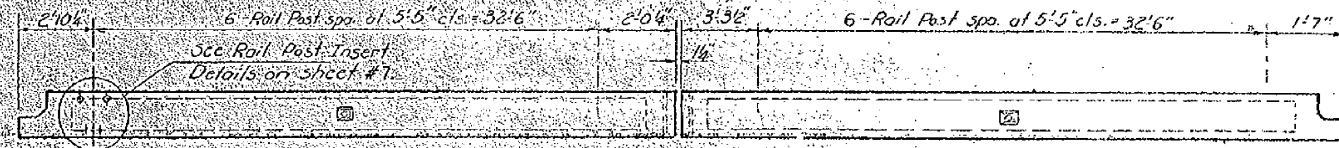
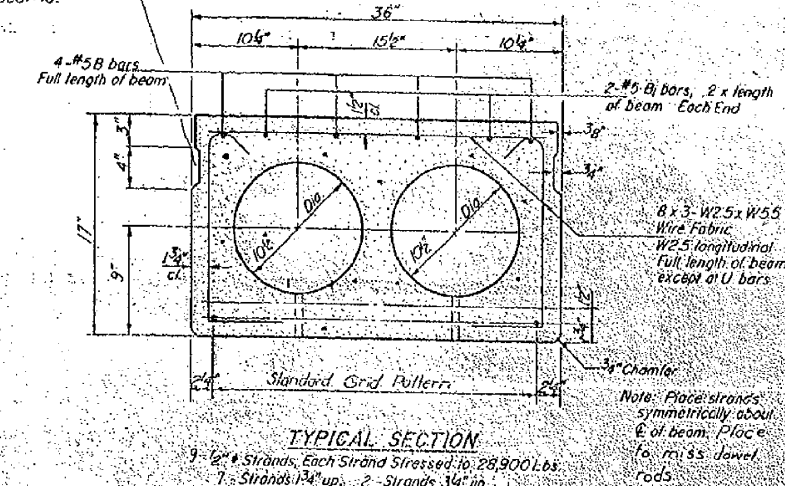
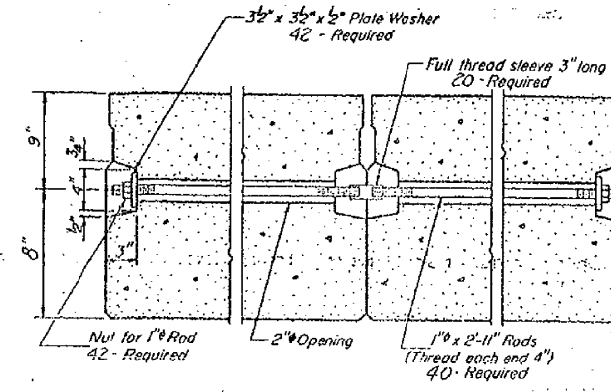
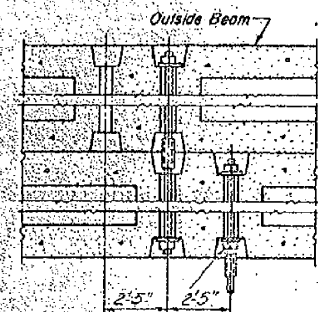
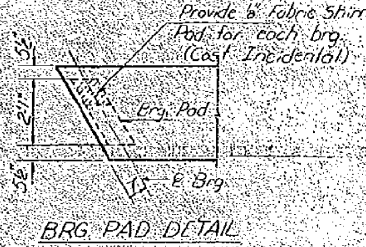
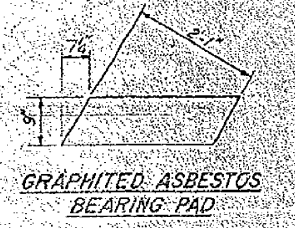
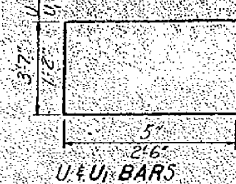
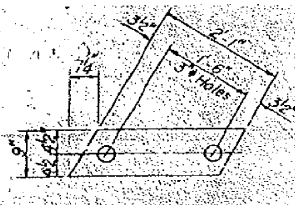


# FOR INFORMATION ONLY

STATE OF ILLINOIS  
DEPARTMENT OF TRANSPORTATION

PROJECT NO.	SECTION	COUNTY	DATE	SHEET NO.	TOTAL SHEETS
806	94-BR	Champaign	20	11	10 SHEETS



**NOTES**

Prestressing steel shall be non-galvanized, high strength, stress-relieved 7-wire strand, Grade 270. The nominal diameter shall be 1/2" and the nominal cross sectional area shall be 0.153 sq. in. Lifting loops shall be 1/2" diameter, 6 x 25 class wire rope with fiber core and shall have a minimum ultimate tensile strength of 12,000 lbs.

The 1/2" rods in the transverse tie assembly shall be tightened to a snug fit and the threads set. Pockets that receive transverse tie bar on outside shall be filled with grout after transverse tie assembly is in place.

Longitudinal shear keys shall be packed with a very dry mix of 2:1 sand and P.C. mortar. After beams have been erected, holes for the dowel anchors shall be drilled into the substructure and the anchor dowels shall be grouted in place.

Reinforcement bars shall conform to AASHTO M-31 or M-53, Grade 60.

Cost of reinforcement and accessories cast into the beam, of bearing pads, of dowel rods, and of grouting longitudinal shear keys is included in unit price bid for "Precast Prestressed Concrete Deck Beams."

**BILL OF MATERIAL**

Bar	No.	Size	Length	Shape
b	6	#5	20'-10"	
b1	6	#5	23'-3"	
Precast Prestressed Concrete Deck Beams (17" Depth)	Sq. Ft.		2467	
Class X Concrete	Cu. Yd.		61	
Reinforcement Bars	Pound		280	

DESIGNED: M. J. RYAN  
CHECKED: J. R. DOLY  
DRAWN: J. R. DOLY  
CHECKED: G. R.

EXAMINED: [Signature]  
MAILED: [Signature]  
APPROVED: [Signature]  
SUPERVISOR OF DESIGN

PD-3-R 8-1-78

**SUPERSTRUCTURE**  
F.A. RT. 808 SEC. 94-BR  
CHAMPAIGN COUNTY  
STA. 791+50.00

HURST-ROSCH ENGINEERS, INC.  
HILLSBORO, ILLINOIS 62049  
(217)532-3959 FAX (217)532-3212



FILE NAME =	USER NAME = keysrb	DESIGNED -	REVISED -	STATE OF ILLINOIS DEPARTMENT OF TRANSPORTATION	EXISTING BRIDGE PLAN	F.A.P. RTE.	SECTION	COUNTY	TOTAL SHEETS	SHEET NO.
es:\pw_work\p1dot\keysrb\8270790\0570582-sht-detail1.GPE2.dgn		DRAWN -	REVISED -		SCALE: NONE	808	94BR-1	CHAMPAIGN	50	42
PLOT SCALE = 48.0000' / in.		CHECKED -	REVISED -		SHEET NO. 2 OF 4 SHEETS					
PLOT DATE = 6/2/2011		DATE - 5-13-11	REVISED -		STA. TO STA.	FED. ROAD DIST. NO. 5	ILLINOIS	FED. AID PROJECT		CONTRACT NO. 70582