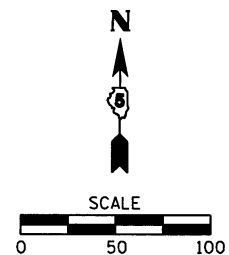
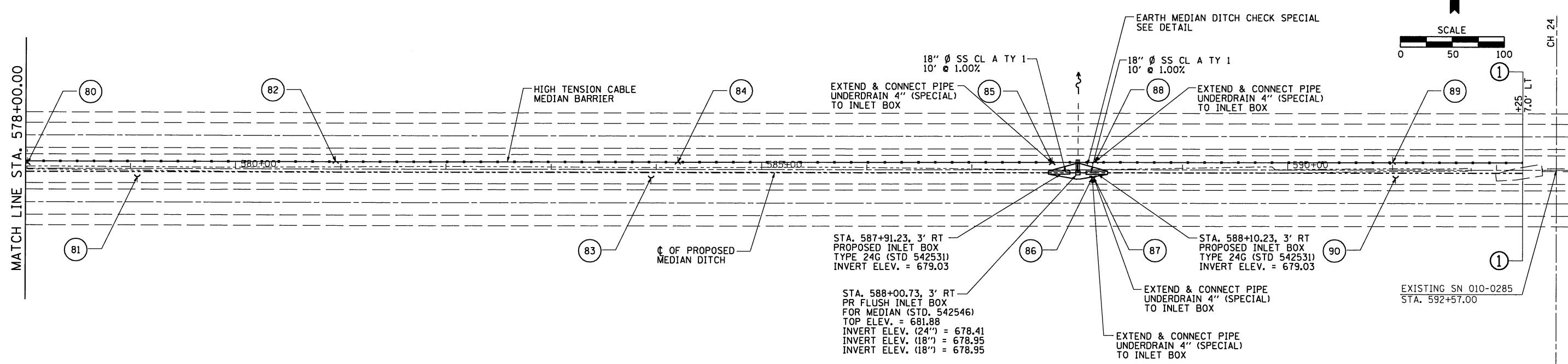


STA. 588+00.73  
 EXISTING INLET BOX  
 EXISTING 24" PIPE LT  
 USFL 9' LT = 678.41  
 DSFL 64' LT = 678.15



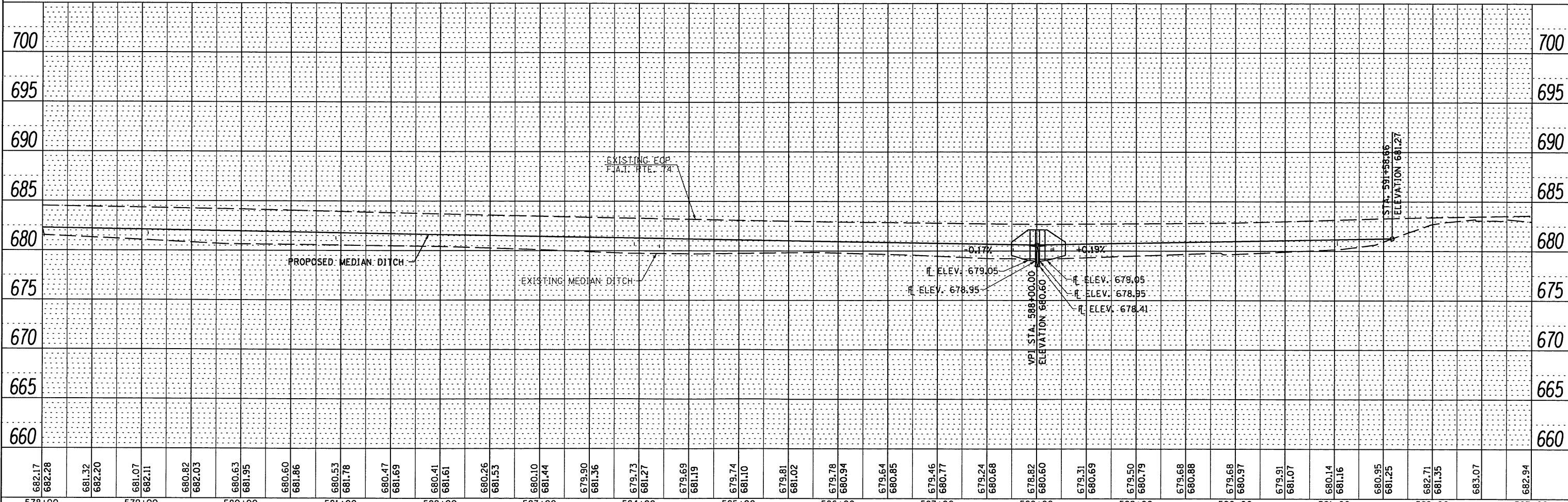
MATCH LINE STA. 578+00.00

MATCH LINE STA. 593+00.00



# INDICATES PIPE UNDERDRAINS, 4" (SPECIAL) SEE SCHEDULE

MEDIAN INLET BOX REMOVAL  
 STA. 588+00.73 1 EACH  
 (SEE SCHEDULE)



682.17	682.28	681.32	682.20	681.07	682.11	680.82	682.03	680.63	681.95	680.60	681.86	680.53	681.78	680.47	681.69	680.41	681.61	680.26	681.53	680.10	681.44	679.90	681.36	679.73	681.27	679.69	681.19	679.74	681.10	679.81	681.02	679.78	680.94	679.64	680.85	679.46	680.77	679.24	680.68	678.82	680.60	679.31	680.69	679.50	680.79	679.68	680.88	679.68	680.97	679.91	681.07	680.14	681.16	680.95	681.25	682.71	681.35	683.07	682.94
578+00	579+00	580+00	581+00	582+00	583+00	584+00	585+00	586+00	587+00	588+00	589+00	590+00	591+00	592+00	593+00																																												

PLAN	DATE
BY	
NO.	
NO.	
NO.	

PROFILE	DATE
BY	
NO.	
NO.	
NO.	

STATE OF ILLINOIS  
 DEPARTMENT OF TRANSPORTATION

PLAN & PROFILE  
 F.A.I. 74

F.A.I. RTE.	SECTION	COUNTY	TOTAL SHEETS	SHEET NO.
74	HSIP FY2012-1	CHAMPAIGN	160	19
CONTRACT NO. 70956			ILLINOIS FED. AID PROJECT	

SCALE: SHEET NO. 11 OF 23 SHEETS STA. 578+00 TO STA. 593+00