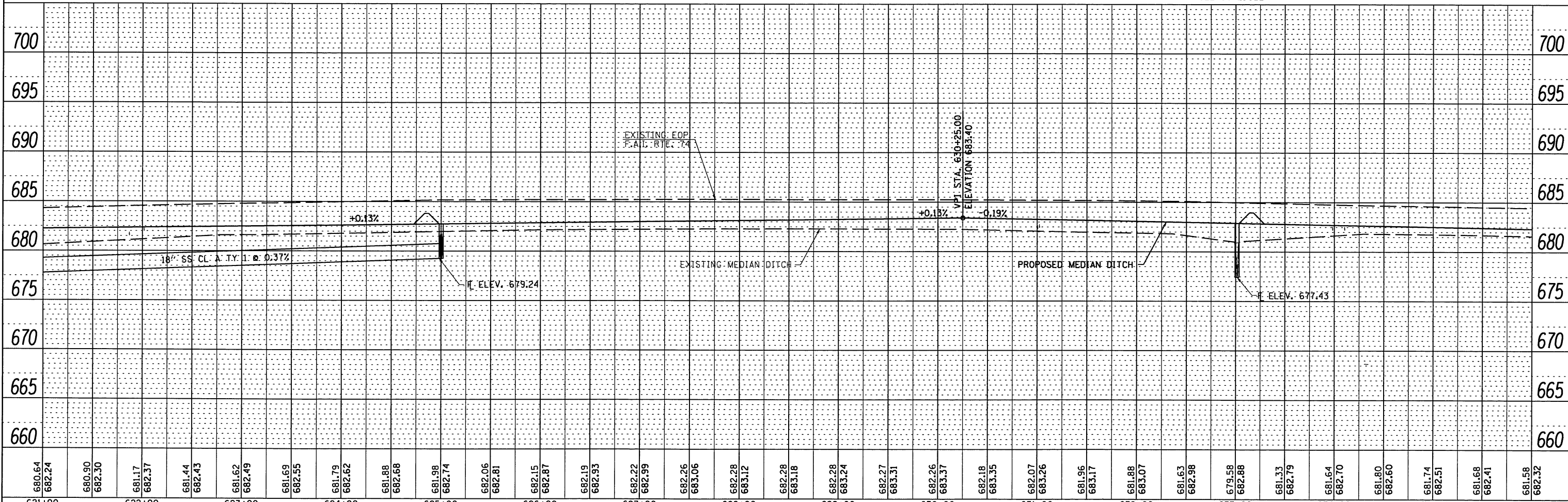


EXIST. CURVE CURV3  
 PI STA. = 628+72.43  
 $\Delta = 0^\circ 59' 03''$  (RT)  
 D =  $0^\circ 05' 18''$   
 R = 64,933.90'  
 T = 557.72'  
 L = 1,115.42'  
 E = 2.40'  
 e = ----  
 T.R. = ----  
 S.E. RUN = ----  
 P.C. STA. = 623+14.71  
 P.T. STA. = 634+30.13

STA. 633+01.42, 3' RT  
 PR FLUSH INLET BOX  
 FOR MEDIAN (STD. 542546)  
 TOP ELEV. = 682.88  
 INVERT ELEV. = 677.43

**MEDIAN INLET BOX REMOVAL**  
 STA. 633+01.39 1 EACH  
 (SEE SCHEDULE)

# INDICATES PIPE UNDERDRAINS, 4" (SPECIAL)  
 SEE SCHEDULE



621+00	622+00	623+00	624+00	625+00	626+00	627+00	628+00	629+00	630+00	631+00	632+00	633+00	634+00	635+00	636+00															
680.64 682.24	680.90 682.30	681.17 682.37	681.44 682.43	681.62 682.49	681.69 682.55	681.79 682.62	681.88 682.68	681.98 682.74	682.06 682.81	682.15 682.87	682.19 682.93	682.22 682.99	682.26 683.06	682.28 683.12	682.28 683.18	682.28 683.24	682.27 683.31	682.26 683.37	682.18 683.35	682.07 683.26	681.96 683.17	681.88 683.07	681.63 682.98	679.58 682.88	681.33 682.79	681.64 682.70	681.80 682.60	681.74 682.51	681.68 682.41	681.58 682.32

PLAN	DATE
NO.	BY
NO.	BY
NO.	BY

PROFILE	DATE
NO.	BY
NO.	BY
NO.	BY

STATE OF ILLINOIS  
 DEPARTMENT OF TRANSPORTATION

PLAN & PROFILE  
 F.A.I. 74

F.A.I. RTE.	SECTION	COUNTY	TOTAL SHEETS	SHEET NO.
74	HSIP FY2012-1	CHAMPAIGN	160	22
CONTRACT NO. 70956			ILLINOIS FED. AID PROJECT	

SCALE: SHEET NO. 14 OF 23 SHEETS STA. 621+00 TO STA. 636+00