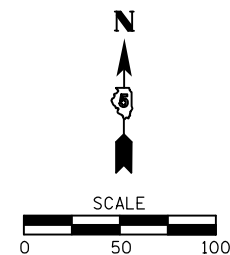
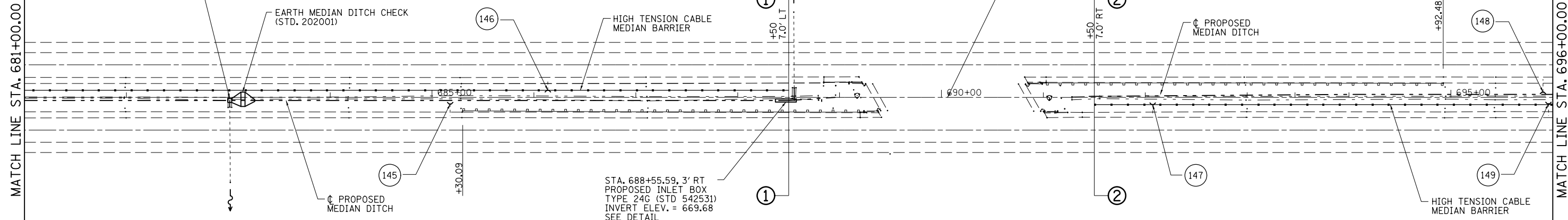


**MEDIAN INLET BOX REMOVAL**  
 STA. 683+01.48 1 EACH  
 (SEE SCHEDULE)

STA. 688+55.52  
 EXISTING INLET BOX  
 EXISTING 18" PIPE LT  
 USFL 9' LT = 668.89  
 DSFL 84' LT = 663.35

STA. 683+01.44, 3' RT  
 PR FLUSH INLET BOX  
 FOR MEDIAN (STD. 542546)  
 TOP ELEV. = 672.59  
 INVERT ELEV. = 670.36

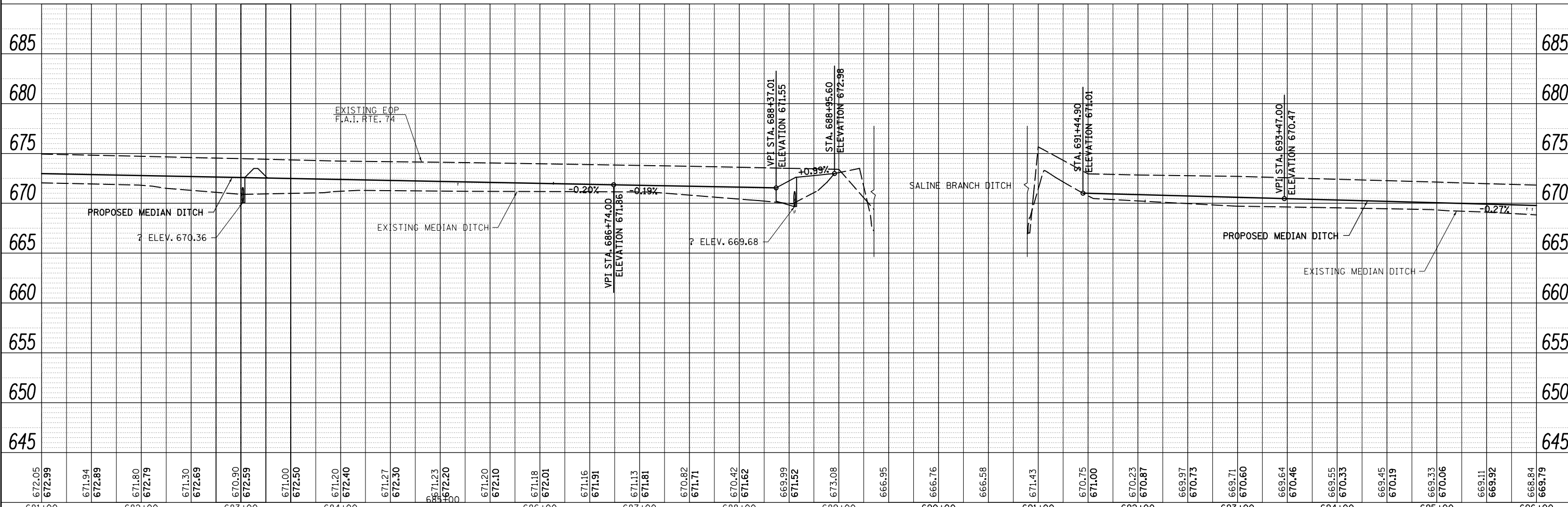


STA. 683+01.48  
 EXISTING INLET BOX  
 EXISTING 18" PIPE RT  
 USFL 9' RT = 670.09  
 DSFL 83' RT = 665.01

STA. 688+55.59, 3' RT  
 PROPOSED INLET BOX  
 TYPE 24G (STD 542531)  
 INVERT ELEV. = 669.68  
 SEE DETAIL

# INDICATES PIPE UNDERDRAINS, 4" (SPECIAL)  
 SEE SCHEDULE

**MEDIAN INLET BOX REMOVAL**  
 STA. 688+55.52 1 EACH  
 (SEE SCHEDULE)



PLAN	SURVEYED	DATE
	PLOTTED	
	NOTED	
	CHECKED	
	FILE NAME	
	NO.	

PROFILE	SURVEYED	DATE
	PLOTTED	
	NOTED	
	CHECKED	
	FILE NAME	
	NO.	

FILE NAME =	USER NAME = keyarb	DESIGNED -	REVISED -	<b>STATE OF ILLINOIS</b> <b>DEPARTMENT OF TRANSPORTATION</b>	<b>PLAN &amp; PROFILE</b> <b>F.A.I. 74</b>	F.A.I. RTE.	SECTION	COUNTY	TOTAL SHEETS	SHEET NO.
c:\pwork\pwork\keyarb\d0272688\0570956-shht-planprofil.dgn		DRAWN -	REVISED -			74	HSIP FY2012-1	CHAMPAIGN	160	26
PLOT SCALE = 100.0000' / 1"		CHECKED -	REVISED -			CONTRACT NO. 70956				
PLOT DATE = 11/28/2011		DATE -	REVISED -			ILLINOIS FED. AID PROJECT				