

03-09-12 LETTING ITEM 080

STATE OF ILLINOIS  
 DEPARTMENT OF TRANSPORTATION  
 DIVISION OF HIGHWAYS  
**PROPOSED  
 HIGHWAY PLANS**  
 VARIOUS ROUTES  
 SECTION: LED RETROFIT AND UPS 2012-1  
 TRAFFIC SIGNAL MODERNIZATION  
 MCLEAN, DOUGLAS COUNTIES

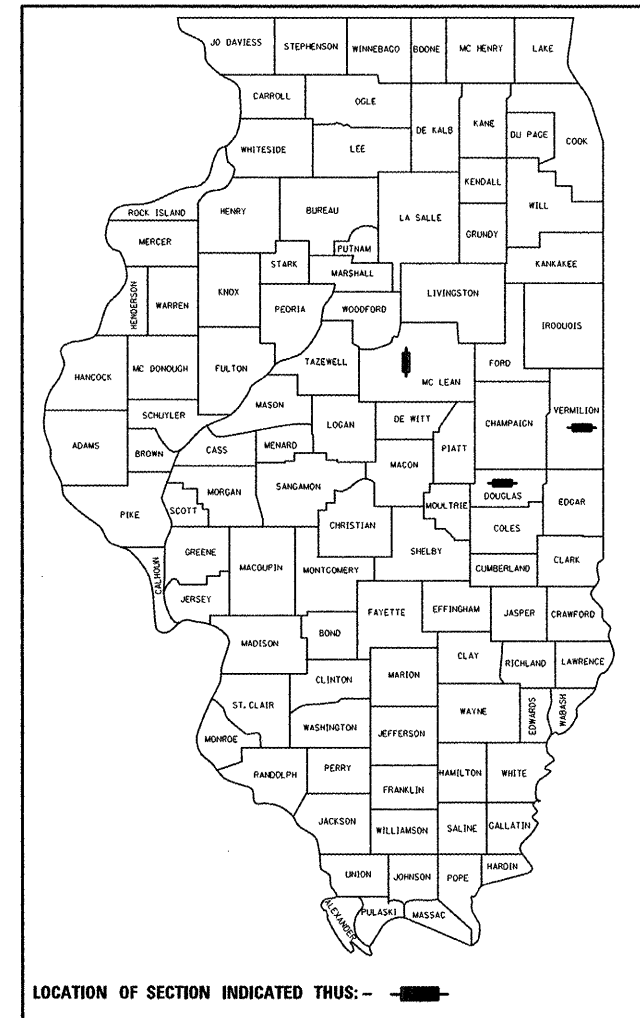
C-95-063-11

FOR INDEX OF SHEETS, SEE SHEET NO. 5

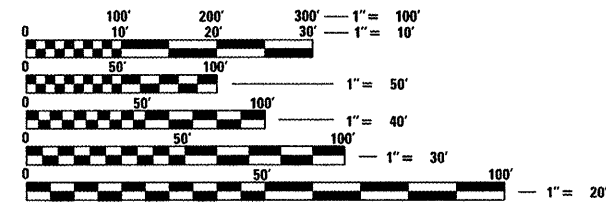
F.A.P. RTE.	SECTION	COUNTY	TOTAL SHEETS	SHEET NO.
	*	**	11	1
ILLINOIS CONTRACT NO. 70962				

\* LED RETROFIT AND UPS 2012-1  
\*\* MCLEAN, DOUGLAS

D95-063-11



FOR LOCATION MAPS, SEE SHEETS 2, 3 & 4



FULL SIZE PLANS HAVE BEEN PREPARED USING STANDARD ENGINEERING SCALES. REDUCED SIZED PLANS WILL NOT CONFORM TO STANDARD SCALES. IN MAKING MEASUREMENTS ON REDUCED PLANS, THE ABOVE SCALES MAY BE USED.

J.U.L.I.E.  
 JOINT UTILITY LOCATION INFORMATION FOR EXCAVATION  
 1-800-892-0123  
 OR 811

PROJECT ENGINEER: SCOTT NEIHART  
 PROJECT MANAGER: ROGER BIGGS

CONTRACT NO. 70962

STATE OF ILLINOIS  
 DEPARTMENT OF TRANSPORTATION  
 DIVISION OF HIGHWAYS

SUBMITTED 12/15 20 11  
*Joseph E. Lane, Jr.*  
 DEPUTY DIRECTOR OF HIGHWAYS REGION ENGINEER

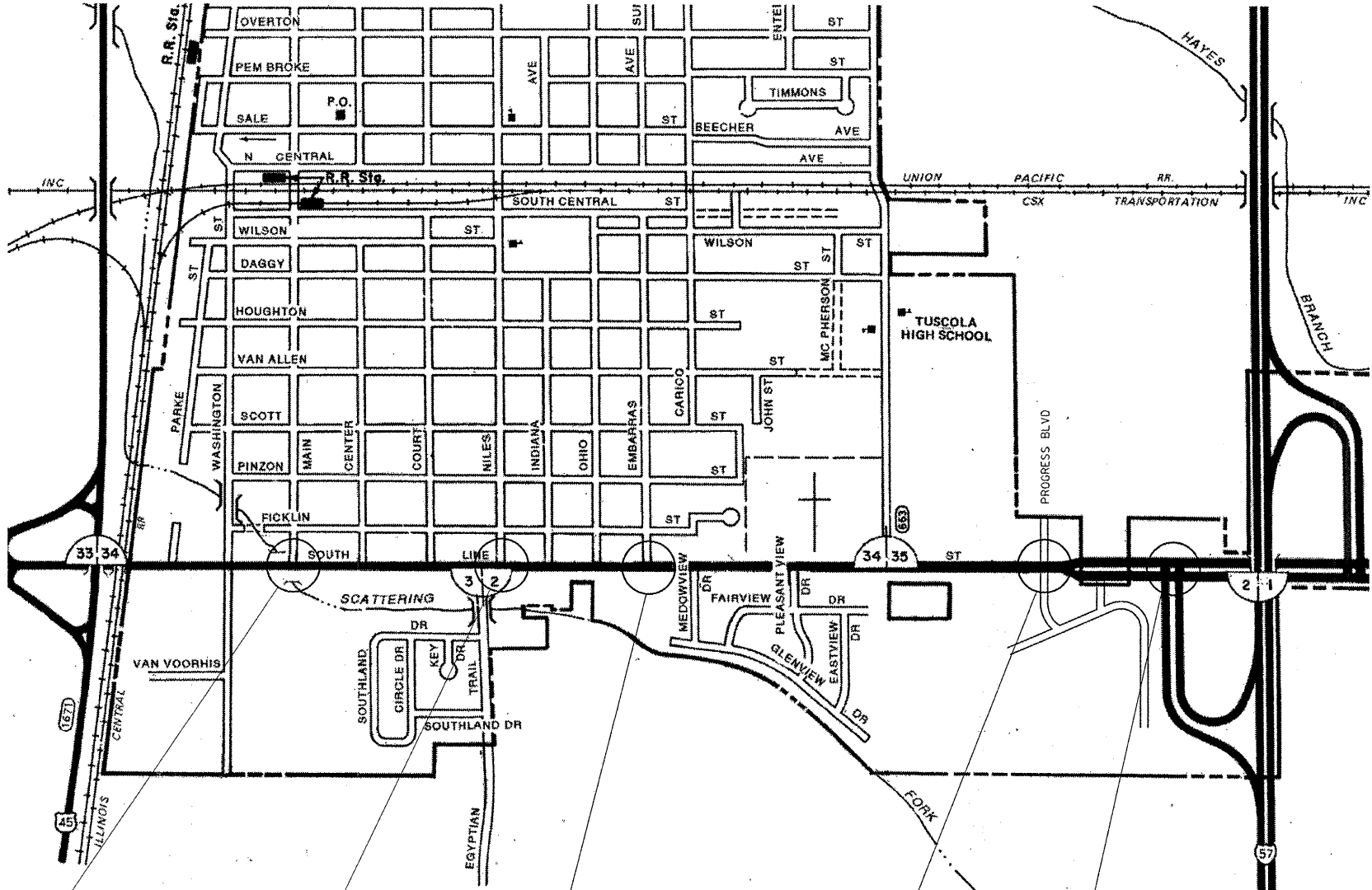
Feb 3 20 12  
*John D. Baranzelli, P.E./B2*  
 acting ENGINEER OF DESIGN AND ENVIRONMENT

Feb 3 20 12  
*William R. Franke*  
 acting DIRECTOR OF HIGHWAYS CHIEF ENGINEER

**PRINTED BY THE AUTHORITY  
 OF THE STATE OF ILLINOIS**

# DOUGLAS COUNTY

## CITY OF TUSCOLA LOCATIONS 1 - 5



LOCATION #1  
U.S. 36 & MAIN ST.  
RETROFIT L.E.D. MODULES

LOCATION #2  
U.S. 36 & NILES AVE.  
RETROFIT L.E.D. MODULES

LOCATION #3  
U.S. 36 & EMBARRAS ST.  
RETROFIT L.E.D. MODULES

LOCATION #4  
U.S. 36 & PROGRESS BLVD.  
RETROFIT L.E.D. MODULES

LOCATION #5  
U.S. 36 & I-57 SOUTHBOUND RAMP  
INSTALL NEW L.E.D. SIGNAL HEADS  
INSTALL U.P.S.

FILE NAME =	USER NAME = biggsrd	DESIGNED -	REVISED -
c:\pwwork\pwwork\biggsrd\0289275\sign	ts.dgn	DRAWN -	REVISED -
PLOT SCALE = 40.0000' / in.	CHECKED -	REVISED -	REVISED -
PLOT DATE = 12/15/2011	DATE -	REVISED -	REVISED -

STATE OF ILLINOIS  
DEPARTMENT OF TRANSPORTATION

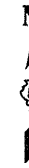
SCALE: SHEET OF SHEETS STA. TO STA.

F.A.P. RTE.	SECTION	COUNTY	TOTAL SHEETS	SHEET NO.
VAR.	*	**	11	2
CONTRACT NO. 70962				
ILLINOIS FED. AID PROJECT				

\* LED RETROFIT AND UPS 2012-1  
\*\* MCLEAN, DOUGLAS

# MCLEAN COUNTY

## TOWN OF NORMAL LOCATIONS 6 - 12



LOCATION #12  
U.S. BUSN 51 &  
I-55 SOUTH RAMP  
RETROFIT L.E.D. MODULES  
INSTALL FAC & TY4 CAB

LOCATION #11  
U.S. BUSN 51 &  
I-55 SOUTH RAMP  
RETROFIT L.E.D. MODULES  
INSTALL FAC & TY4 CAB

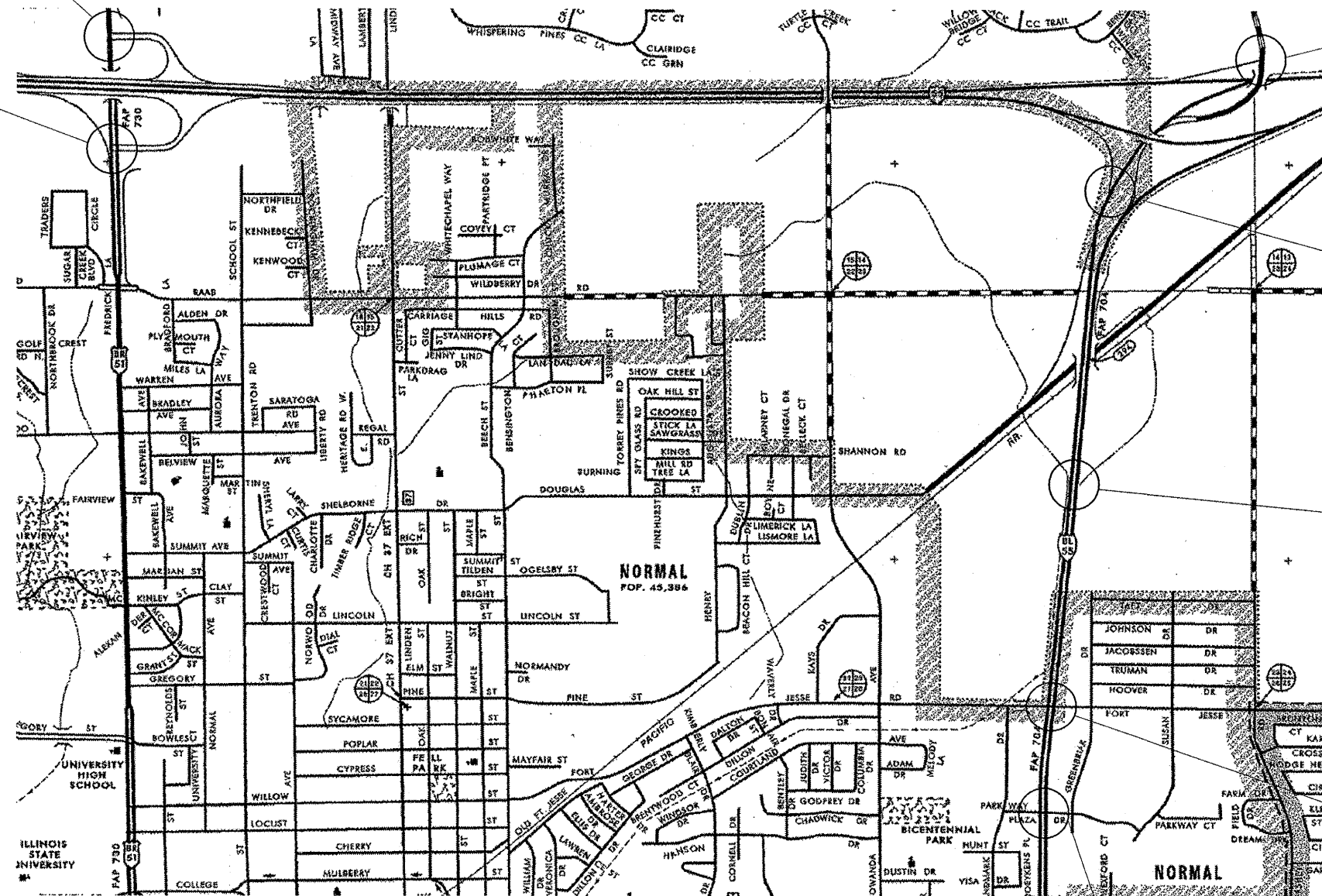
LOCATION #10  
BUSN. 55 (VETERAN'S PKWY) &  
I-55 NORTH RAMP  
INSTALL U.P.S.

LOCATION #9  
BUSN. 55 (VETERAN'S PKWY) &  
I-55 SOUTH RAMP  
INSTALL U.P.S.

LOCATION #8  
BUSN. 55 (VETERAN'S PKWY) &  
SHEPARD RD.  
INSTALL U.P.S.

LOCATION #7  
BUSN. 55 (VETERAN'S PKWY) &  
FORT JESSE RD.  
INSTALL U.P.S.

LOCATION #6  
BUSN. 55 (VETERAN'S PKWY) &  
PARKWAY PLAZA  
INSTALL U.P.S.



FILE NAME =	USER NAME = biggard	DESIGNED -	REVISED -
c:\pwork\pvidot\biggard\48289275\sign	is.dgn	DRAWN -	REVISED -
	PLOT SCALE = 40.0000' / in.	CHECKED -	REVISED -
	PLOT DATE = 12/15/2011	DATE -	REVISED -

STATE OF ILLINOIS  
DEPARTMENT OF TRANSPORTATION

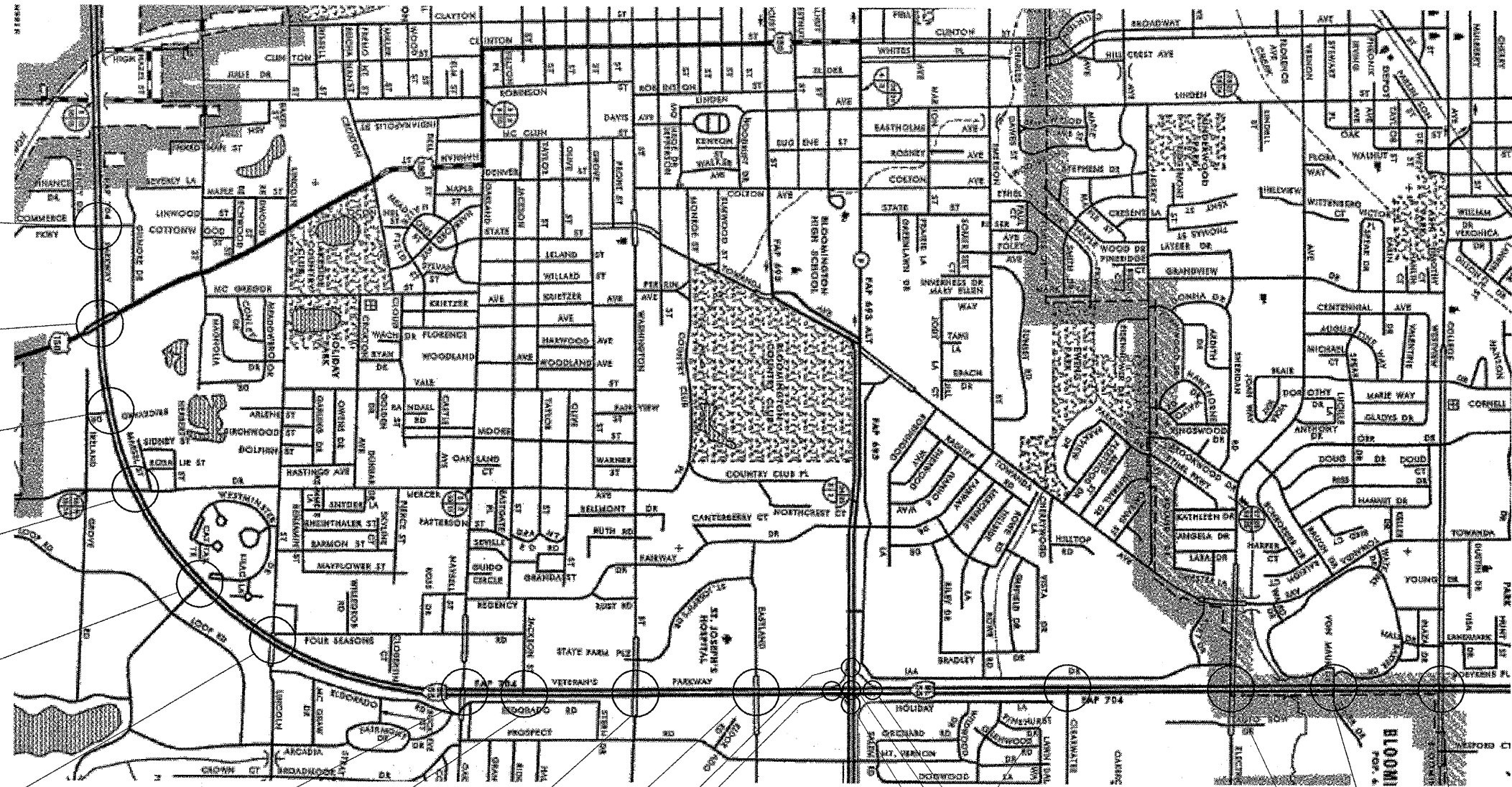
SCALE: SHEET OF SHEETS STA. TO STA.

F.A.P. RTE.	SECTION	COUNTY	TOTAL SHEETS	SHEET NO.
VAR.	*	**	11	3
CONTRACT NO. 70962				
ILLINOIS FED. AID PROJECT				

\* LED RETROFIT AND UPS 2012-1  
\*\* MCLEAN, DOUGLAS

# MCLEAN COUNTY

## CITY OF BLOOMINGTON LOCATIONS 13 - 31



LOCATION #13  
I-55 BUSN. (VETERAN'S PKWY) &  
COMMERCE PKWY  
INSTALL U.P.S.

LOCATION #14  
I-55 BUSN. (VETERAN'S PKWY) &  
MORRISSEY DR.  
INSTALL U.P.S.

LOCATION #15  
I-55 BUSN. (VETERAN'S PKWY) &  
BRICKYARD DR.  
INSTALL U.P.S.

LOCATION #16  
I-55 BUSN. (VETERAN'S PKWY) &  
MERCER AVE.  
INSTALL U.P.S.

LOCATION #17  
I-55 BUSN. (VETERAN'S PKWY) &  
IRELAND GROVE RD.  
INSTALL U.P.S.

LOCATION #18  
I-55 BUSN. (VETERAN'S PKWY) &  
OAKLAND AVE.  
INSTALL U.P.S.

LOCATION #19  
I-55 BUSN. (VETERAN'S PKWY) &  
LINCOLN ST.  
INSTALL U.P.S.

LOCATION #20  
I-55 BUSN. (VETERAN'S PKWY) &  
JACKSON ST.  
INSTALL U.P.S.

LOCATION #21  
I-55 BUSN. (VETERAN'S PKWY) &  
WASHINGTON ST.  
INSTALL U.P.S.

LOCATION #22  
I-55 BUSN. (VETERAN'S PKWY) &  
EASTLAND AVE.  
INSTALL U.P.S.

LOCATION #23  
I-55 BUSN. (VETERAN'S PKWY) &  
IL 9 SOUTH SIGNALS  
INSTALL U.P.S.

LOCATION #26  
I-55 BUSN. (VETERAN'S PKWY) &  
IL 9 WEST SIGNALS  
INSTALL U.P.S.

LOCATION #27  
I-55 BUSN. (VETERAN'S PKWY) &  
IL 9 EAST SIGNALS  
INSTALL U.P.S.

LOCATION #24  
I-55 BUSN. (VETERAN'S PKWY) &  
IL 9 CENTRAL SIGNALS  
INSTALL U.P.S.

LOCATION #25  
I-55 BUSN. (VETERAN'S PKWY) &  
IL 9 NORTH SIGNALS  
INSTALL U.P.S.

LOCATION #28  
I-55 BUSN. (VETERAN'S PKWY) &  
CLEARWATER AVE.  
INSTALL U.P.S.

LOCATION #29  
I-55 BUSN. (VETERAN'S PKWY) &  
GENERAL ELECTRIC RD.  
INSTALL U.P.S.

LOCATION #30  
I-55 BUSN. (VETERAN'S PKWY) &  
JUMAR RD.  
INSTALL U.P.S.

LOCATION #31  
I-55 BUSN. (VETERAN'S PKWY) &  
COLLEGE AVE.  
INSTALL U.P.S.

FILE NAME =	USER NAME = biggsrd	DESIGNED -	REVISED -
ct:\pwwork\pwwork\biggsrd\02289275\sign	ls.dgn	DRAWN -	REVISED -
		CHECKED -	REVISED -
		DATE -	REVISED -

PLOT SCALE = 40.0000' / 1"	
PLOT DATE = 12/15/2011	

### STATE OF ILLINOIS DEPARTMENT OF TRANSPORTATION

SCALE: SHEET OF SHEETS STA. TO STA.

F.A.P. RTE.	SECTION	COUNTY	TOTAL SHEETS	SHEET NO.
VAR.	*	**	11	4
CONTRACT NO. 70962				
ILLINOIS FED. AID PROJECT				

\*\* LED RETROFIT AND UPS 2012-1  
\*\* MCLEAN, DOUGLAS

GENERAL NOTES

G.N.-100

ENGLISH UNITS OF MEASUREMENT SHALL GOVERN OVER AND SUPERSEDE ANY METRIC UNITS SHOWN IN THIS CONTRACT. WHERE INCLUDED, METRIC UNITS ARE FOR INFORMATION ONLY.

STANDARDS IN THE PLANS

STANDARD	DESCRIPTION
000001-06	STANDARD SYMBOLS, ABBREVIATIONS AND PATTERNS
001006	DECIMAL OF AN INCH AND OF A FOOT
701701-08	URBAN CLOSURE MULTILANE INTERSECTION
701901-02	TRAFFIC CONTROL DEVICES
862001-01	UNINTERRUPTABLE POWER SUPPLY (UPS)
880006-01	TRAFFIC SIGNAL MOUNTING DETAILS - POST AND BRACKET MOUNT

INDEX OF SHEETS

- 1 COVER SHEET
- 2 LOCATION MAP - TUSCOLA (LOCATIONS 1 - 5)
- 3 LOCATION MAP - NORMAL (LOCATIONS 6 - 12)
- 4 LOCATION MAP - BLOOMINGTON (LOCATIONS 13 - 31)
- 5 GENERAL NOTES, INDEX OF SHEETS, STANDARDS IN THE PLANS
- 6 SUMMARY OF QUANTITIES
- 7 - 11 PLAN SHEETS

GENERAL NOTES

- 1. THE FINAL LOCATIONS OF ALL TRAFFIC CONTROL ITEMS SHALL BE VERIFIED BY THE ENGINEER IN THE FIELD.
- 2. ITEMS REMOVED WILL BECOME THE PROPERTY OF THE CONTRACTOR UNLESS OTHERWISE NOTED.

\* \*\*

FILE NAME = c:\pwwork\pwwidat\biggsrd\0289275\signs.dgn	USER NAME = biggsrd	DESIGNED -	REVISED -	<b>STATE OF ILLINOIS DEPARTMENT OF TRANSPORTATION</b>	F.A.P. RTE.	SECTION	COUNTY	TOTAL SHEETS	SHEET NO.
		DRAWN -	REVISED -		VAR.	*	**	11	5
		CHECKED -	REVISED -		CONTRACT NO. 70962				
		DATE -	REVISED -		ILLINOIS FED. AID PROJECT				
				SCALE:	SHEET	OF	SHEETS	STA.	TO STA.

\* LED RETROFIT AND UPS 2012-1  
\*\* MCLEAN, DOUGLAS

70962

## SUMMARY OF QUANTITIES

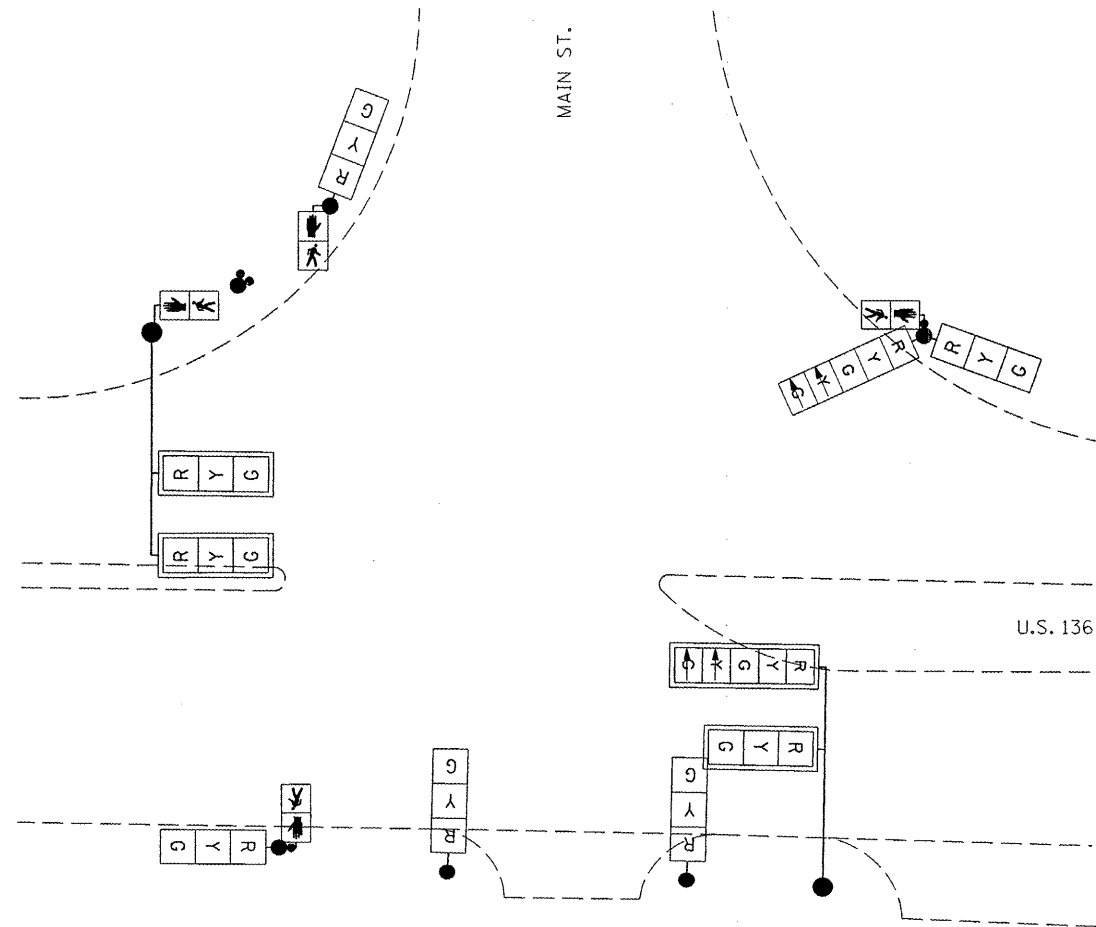
CODE NO	ITEM	UNIT	TOTAL QUANTITY	LOCATION OF WORK:		
				DOUGLAS COUNTY RURAL 90% STATE 10% CITY 0021	MCLEAN COUNTY URBAN 90% STATE 10% CITY 0021	MCLEAN COUNTY URBAN 90% STATE 10% CITY 0021
				CONSTRUCTION TYPE CODE:		
				QUANTITY	QUANTITY	QUANTITY
67100100	MOBILIZATION	L SUM	1.0	0.4	0.3	0.3
70102635	TRAFFIC CONTROL AND PROTECTION, STANDARD 701701	L SUM	1.0	0.7		0.3
85700200	FULL-ACTUATED CONTROLLER AND TYPE IV CABINET	EACH	2.0			2.0
86200200	UNINTERRUPTABLE POWER SUPPLY, STANDARD	EACH	25.0	1.0	22.0	2.0
88040070	SIGNAL HEAD, POLYCARBONATE, LED, 1-FACE, 3-SECTION, BRACKET MOUNTED	EACH	8.0	6.0		2.0
88040090	SIGNAL HEAD, POLYCARBONATE, LED, 1-FACE, 3-SECTION, MAST ARM MOUNTED	EACH	9.0	3.0		6.0
88040120	SIGNAL HEAD, POLYCARBONATE, LED, 1-FACE, 4-SECTION, MAST ARM MOUNTED	EACH	2.0			2.0
88040160	SIGNAL HEAD, POLYCARBONATE, LED, 1-FACE, 5-SECTION, MAST ARM MOUNTED	EACH	1.0	1.0		
88040260	SIGNAL HEAD, POLYCARBONATE, LED, 2-FACE, 1-3-SECTION, 1-5-SECTION, BRACKET MOUNTED	EACH	2.0	2.0		
88102825	PEDESTRIAN SIGNAL HEAD, POLYCARBONATE, LED, 1-FACE, BRACKET MOUNTED WITH COUNT DOWN TIMER	EACH	16.0	16.0		
X8803040	SIGNAL HEAD, LED, 2-FACE, 1-3 SECTION, 1-5 SECTION, BRACKET MOUNTED, RETROFIT	EACH	5.0	5.0		
X8803051	SIGNAL HEAD, LED, 3-FACE, 2-3 SECTION, 1-5 SECTION, BRACKET MOUNTED, RETROFIT	EACH	1.0	1.0		
X8803082	SIGNAL HEAD, LED, 1-FACE, 3-SECTION, BRACKET MOUNTED, RETROFIT	EACH	6.0	6.0		
X8803084	SIGNAL HEAD, LED, 1-FACE, 3-SECTION, MAST ARM MOUNTED, RETROFIT	EACH	17.0	17.0		
X8803088	SIGNAL HEAD, LED, 1-FACE, 5-SECTION, MAST ARM MOUNTED, RETROFIT	EACH	11.0	11.0		
X8803090	SIGNAL HEAD, LED, 2-FACE, 3-SECTION, BRACKET MOUNTED, RETROFIT	EACH	1.0	1.0		
X8803910	SIGNAL HEAD ,LED, 2-FACE, 5-SECTION, BRACKET MOUNTED, RETROFIT	EACH	3.0	3.0		
X8950105	REMOVE EXISTING TRAFFIC CONTROLLER AND CABINET	EACH	2.0	2.0		
X8950305	REMOVE EXISTING SIGNAL HEAD	EACH	24.0	14.0		10.0
X8950307	REMOVE EXISTING PEDESTRIAN SIGNAL HEAD	EACH	16.0	16.0		
<b>X8803210</b>	<b>SIGNAL HEAD ,LED, 1-FACE, 5-SECTION, BRACKET MOUNTED, RETROFIT</b>	<b>EACH</b>	<b>1.0</b>	<b>1.0</b>		

FILE NAME =	USER NAME = biggsrd	DESIGNED -	REVISED -	<b>STATE OF ILLINOIS DEPARTMENT OF TRANSPORTATION</b>	SCALE:	SHEET	OF	SHEETS	STA.	TO STA.	F.A.P RTE.	SECTION	COUNTY	TOTAL SHEETS	SHEET NO.	
et\pwork\puidot\biggsrd\0289275\sign	ls.dgn	DRAWN -	REVISED -									VAR.	*	**	11	6
	PLOT SCALE = 40.0000' / in.	CHECKED -	REVISED -													
	PLOT DATE = 12/16/2011	DATE -	REVISED -													

\* LED RETROFIT AND UPS 2012-1  
\*\* MCLEAN, DOUGLAS

U.S. 136 & MAIN ST.

LOCATION 1



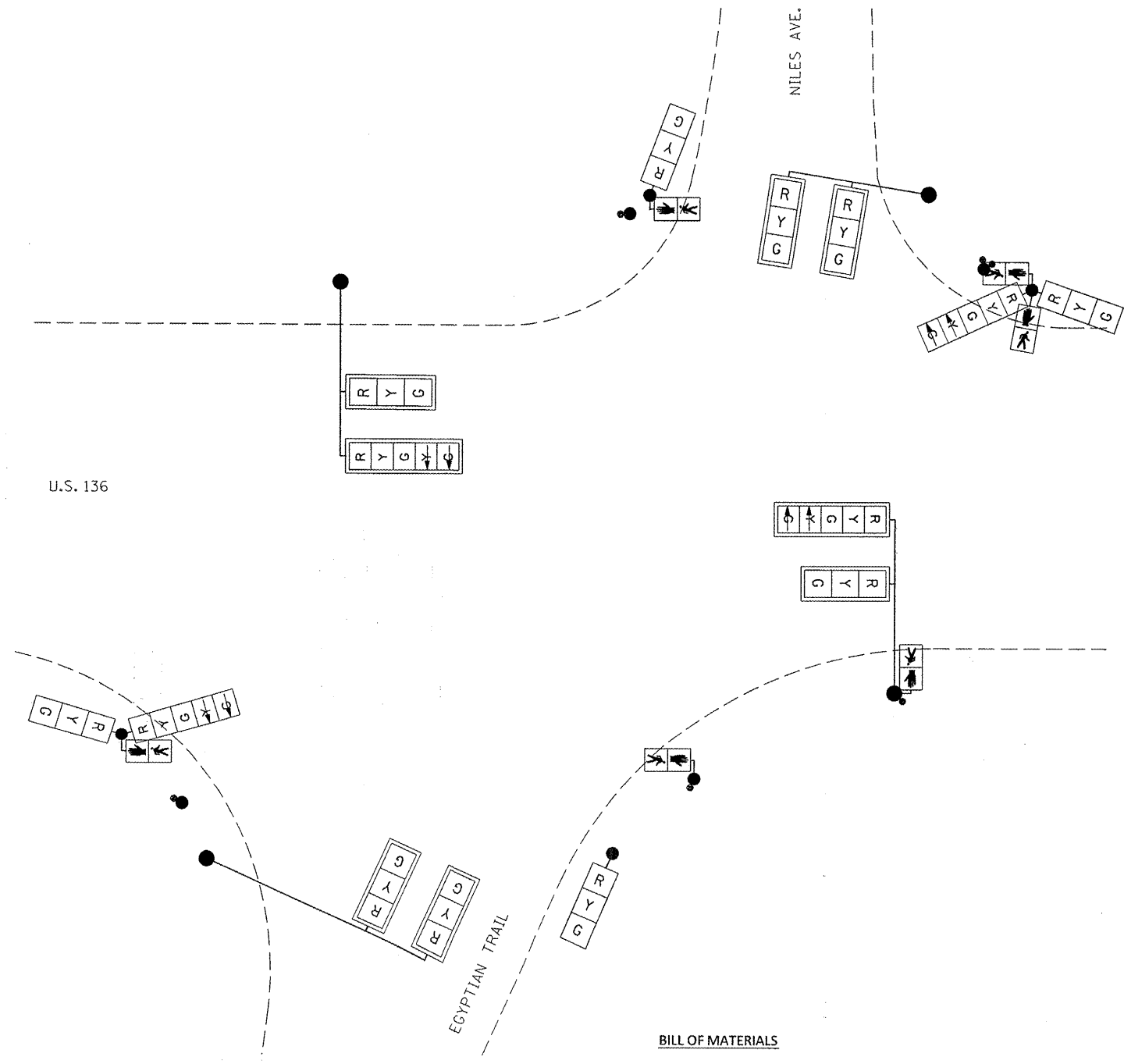
BILL OF MATERIALS

U.S. 36 & MAIN ST.  
(LOCATION 1)

ITEM	UNIT	QUANTITY
SIGNAL HEAD, LED, 2-FACE, 1-3 SECTION, 1-5 SECTION, BRACKET MOUNTED, RETROFIT	EACH	1
SIGNAL HEAD, LED, 1-FACE, 3-SECTION, BRACKET MOUNTED, RETROFIT	EACH	4
SIGNAL HEAD, LED, 1-FACE, 3-SECTION, MAST ARM MOUNTED, RETROFIT	EACH	3
SIGNAL HEAD, LED, 1-FACE, 5-SECTION, MAST ARM MOUNTED, RETROFIT	EACH	1
PEDESTRIAN SIGNAL HEAD, LED, 1-FACE, BRACKET MOUNTED WITH COUNTDOWN TIMER	EACH	4

U.S. 136 & EGYPTIAN TRAIL / NILES AVE.

LOCATION 2



BILL OF MATERIALS

U.S. 36 & EGYPTIAN TRAIL / NILES AVE.  
LOCATION 2

ITEM	UNIT	QUANTITY
SIGNAL HEAD, LED, 2-FACE, 1-3 SECTION, 1-5 SECTION, BRACKET MOUNTED, RETROFIT	EACH	2
SIGNAL HEAD, LED, 1-FACE, 3-SECTION, BRACKET MOUNTED, RETROFIT	EACH	2
SIGNAL HEAD, LED, 1-FACE, 3-SECTION, MAST ARM MOUNTED, RETROFIT	EACH	6
SIGNAL HEAD, LED, 1-FACE, 5-SECTION, MAST ARM MOUNTED, RETROFIT	EACH	2
PEDESTRIAN SIGNAL HEAD, LED, 1-FACE, BRACKET MOUNTED WITH COUNTDOWN TIMER	EACH	6

FILE NAME =	USER NAME = biggsrd	DESIGNED -	REVISED -
e:\pwork\puidot\biggsrd\0289275\sign1.s.dgn		DRAWN -	REVISED -
PLOT SCALE = 48.0000' / 1"		CHECKED -	REVISED -
PLOT DATE = 12/16/2011		DATE -	REVISED -

STATE OF ILLINOIS  
DEPARTMENT OF TRANSPORTATION

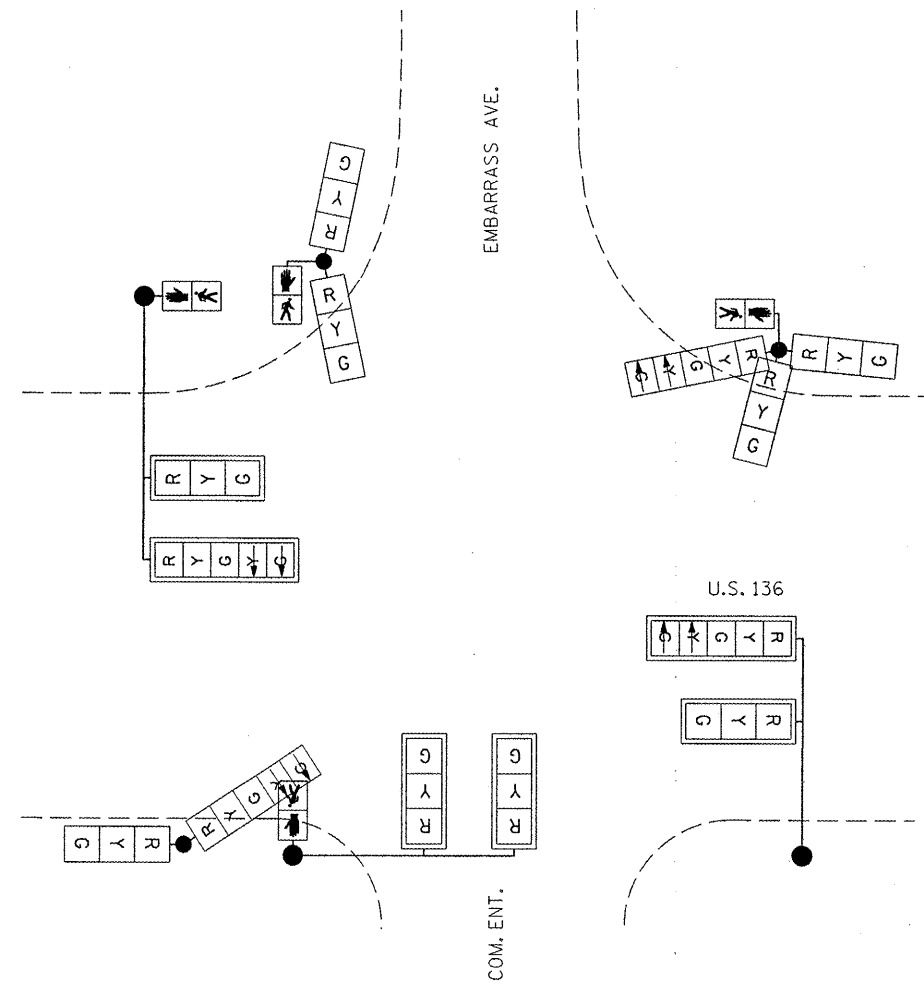
SCALE: SHEET OF SHEETS STA. TO STA.

F.A.P. RTE.	SECTION	COUNTY	TOTAL SHEETS	SHEET NO.
VAR.	*	**	11	7
CONTRACT NO. 70962				

ILLINOIS FED. AID PROJECT  
\* LED RETROFIT AND UPS 2012-1  
\*\* MCLEAN, DOUGLAS

U.S. 136 & EMBARRASS AVE.

LOCATION 3



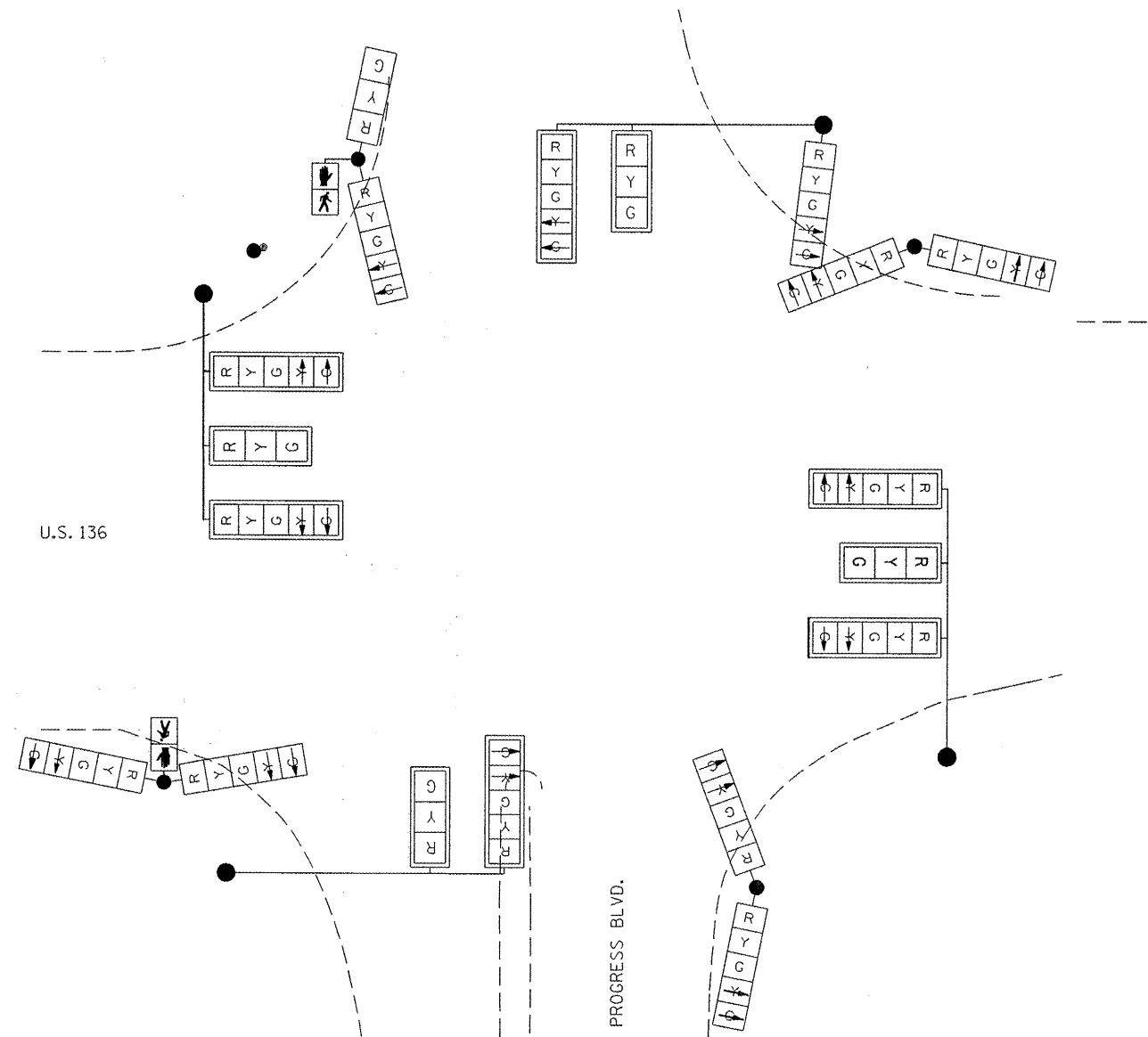
BILL OF MATERIALS

U.S. 36 & EMBARRASS AVE.  
LOCATION 3

ITEM	UNIT	QUANTITY
SIGNAL HEAD, LED, 2-FACE, 1-3 SECTION, 1-5 SECTION, BRACKET MOUNTED, RETROFIT	EACH	1
SIGNAL HEAD, LED, 3-FACE, 2-3 SECTION, 1-5 SECTION, BRACKET MOUNTED, RETROFIT	EACH	1
SIGNAL HEAD, LED, 1-FACE, 3-SECTION, MAST ARM MOUNTED, RETROFIT	EACH	4
SIGNAL HEAD, LED, 1-FACE, 5-SECTION, MAST ARM MOUNTED, RETROFIT	EACH	2
SIGNAL HEAD, LED, 2-FACE, 3-SECTION, BRACKET MOUNTED, RETROFIT	EACH	1
PEDESTRIAN SIGNAL HEAD, LED, 1-FACE, BRACKET MOUNTED WITH COUNTDOWN TIMER	EACH	4

U.S. 136 & PROGRESS BLVD.

LOCATION 4



BILL OF MATERIALS

U.S. 36 & PROGRESS BLVD.  
LOCATION 4

ITEM	UNIT	QUANTITY
SIGNAL HEAD, LED, 2-FACE, 1-3 SECTION, 1-5 SECTION, BRACKET MOUNTED, RETROFIT	EACH	1
SIGNAL HEAD, LED, 2-FACE, 5-SECTION, BRACKET MOUNTED, RETROFIT	EACH	3
SIGNAL HEAD, LED, 1-FACE, 5-SECTION, BRACKET MOUNTED, RETROFIT	EACH	1
SIGNAL HEAD, LED, 1-FACE, 3-SECTION, MAST ARM MOUNTED, RETROFIT	EACH	4
SIGNAL HEAD, LED, 1-FACE, 5-SECTION, MAST ARM MOUNTED, RETROFIT	EACH	6
PEDESTRIAN SIGNAL HEAD, LED, 1-FACE, BRACKET MOUNTED WITH COUNTDOWN TIMER	EACH	2

FILE NAME =	USER NAME = biggersd	DESIGNED -	REVISED -
et:\pw\work\p\ridot\biggersd\40289275\signal.dgn		DRAWN -	REVISED -
		CHECKED -	REVISED -
		DATE -	REVISED -

STATE OF ILLINOIS  
DEPARTMENT OF TRANSPORTATION

SCALE: SHEET OF SHEETS STA. TO STA.

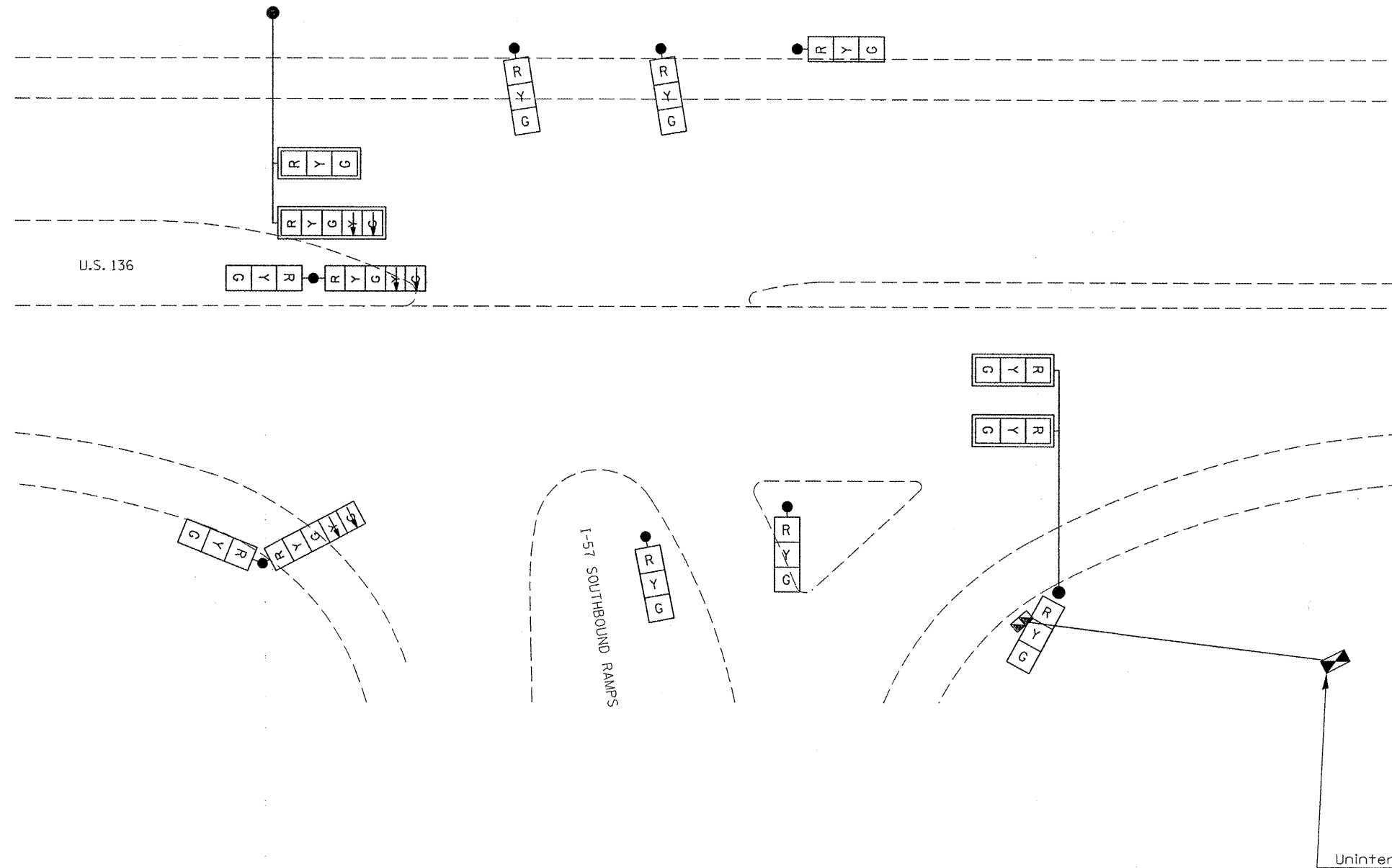
F.A.P. RTE.	SECTION	COUNTY	TOTAL SHEETS	SHEET NO.
VAR.	*	**	11	8
CONTRACT NO. 70962				

ILLINOIS FED. AID PROJECT  
\* LED RETROFIT AND UPS 2012-1  
\*\* MCLEAN, DOUGLAS



# U.S. 136 & I-55 SOUTHBOUND RAMPS

LOCATION 5



**BILL OF MATERIALS**

U.S. 36 & I-57 SOUTHBOUND RAMPS  
LOCATION 5

ITEM	UNIT	QUANTITY
SIGNAL HEAD, LED, 2-FACE, 1-3 SECTION, 1-5 SECTION, BRACKET MOUNTED	EACH	2
SIGNAL HEAD, LED, 1-FACE, 3-SECTION, BRACKET MOUNTED	EACH	6
SIGNAL HEAD, LED, 1-FACE, 3-SECTION, MAST ARM MOUNTED	EACH	3
SIGNAL HEAD, LED, 1-FACE, 5-SECTION, MAST ARM MOUNTED	EACH	1
UNINTERRUPTIBLE POWER SUPPLY	EACH	1

FILE NAME = c:\pwork\pvidot\biggsrd\0289275\sign	USER NAME = biggsrd	DESIGNED -	REVISED -
		DRAWN -	REVISED -
		CHECKED -	REVISED -
		DATE -	REVISED -

**STATE OF ILLINOIS  
DEPARTMENT OF TRANSPORTATION**

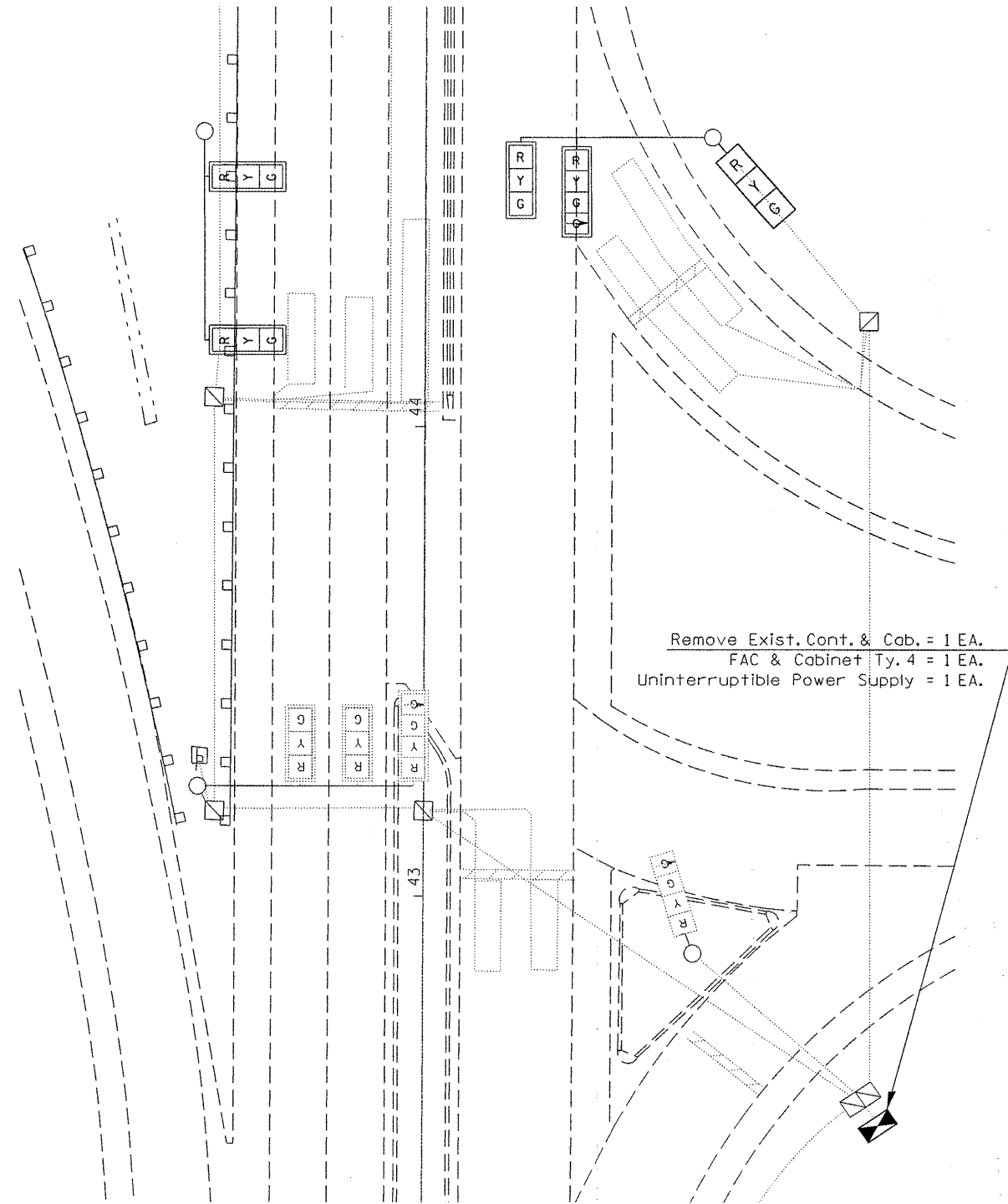
SCALE:	SHEET	OF	SHEETS	STA.	TO STA.
--------	-------	----	--------	------	---------

F.A.P. RTE.	SECTION	COUNTY	TOTAL SHEETS	SHEET NO.
VAR.	*	**	11	9
CONTRACT NO. 70962				

ILLINOIS FED. AID PROJECT  
\* LED RETROFIT AND UPS 2012-1  
\*\* MCLEAN, DOUGLAS

U.S. 51 BUS. & I-55 SOUTH RAMPS

LOCATION 11



Remove Exist. Cont. & Cab. = 1 EA.  
FAC & Cabinet Ty. 4 = 1 EA.  
Uninterruptible Power Supply = 1 EA.

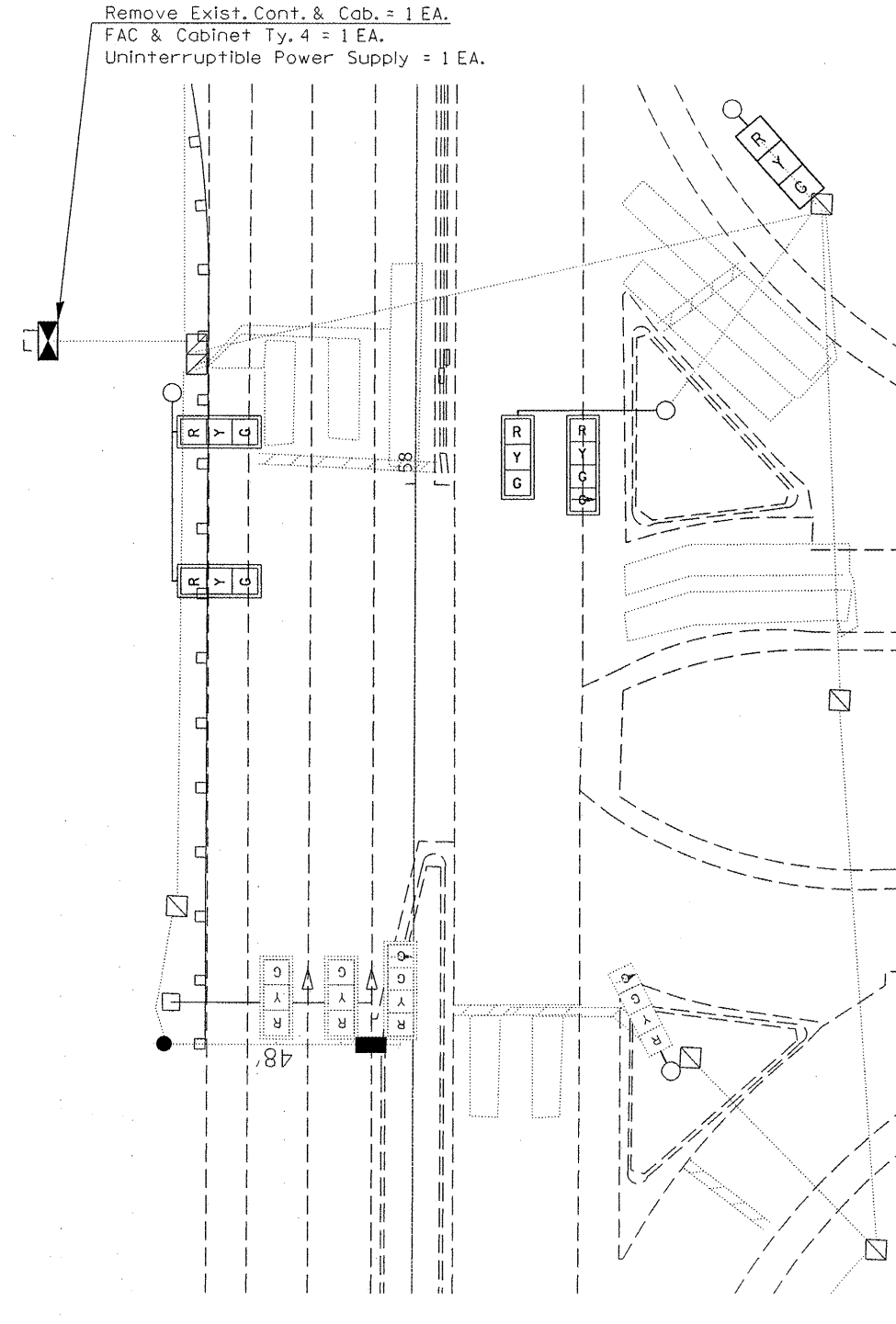
BILL OF MATERIALS

U.S. 36 & MAIN ST.  
LOCATION 11

ITEM	UNIT	QUANTITY
SIGNAL HEAD, LED, 1-FACE, 3-SECTION, BRACKET MOUNTED	EACH	1
SIGNAL HEAD, LED, 1-FACE, 3-SECTION, MAST ARM MOUNTED	EACH	3
SIGNAL HEAD, LED, 1-FACE, 4-SECTION, MAST ARM MOUNTED	EACH	1
FULL-ACTUATED CONTROLLER AND CABINET, TYPE 4	EACH	1
REMOVE EXISTING TRAFFIC CONTROLLER AND CABINET	EACH	1

U.S. 51 BUS. & I-55 NORTH RAMPS

LOCATION 12



Remove Exist. Cont. & Cab. = 1 EA.  
FAC & Cabinet Ty. 4 = 1 EA.  
Uninterruptible Power Supply = 1 EA.

BILL OF MATERIALS

U.S. 36 & MAIN ST.  
LOCATION 12

ITEM	UNIT	QUANTITY
SIGNAL HEAD, LED, 1-FACE, 3-SECTION, BRACKET MOUNTED	EACH	1
SIGNAL HEAD, LED, 1-FACE, 3-SECTION, MAST ARM MOUNTED	EACH	3
SIGNAL HEAD, LED, 1-FACE, 4-SECTION, MAST ARM MOUNTED	EACH	1
FULL-ACTUATED CONTROLLER AND CABINET, TYPE 4	EACH	1
REMOVE EXISTING TRAFFIC CONTROLLER AND CABINET	EACH	1

FILE NAME =	USER NAME = biggsrd	DESIGNED -	REVISED -
c:\pwwork\pwwork\biggsrd\0289275\sign	ts.dgn	DRAWN -	REVISED -
PLOT SCALE = 40.0000' / 1" =	CHECKED -	REVISIONS -	
PLOT DATE = 12/15/2011	DATE -	REVISED -	

STATE OF ILLINOIS  
DEPARTMENT OF TRANSPORTATION

SCALE: SHEET OF SHEETS STA. TO STA.

F.A.P. RTE.	SECTION	COUNTY	TOTAL SHEETS	SHEET NO.
VAR.	*	**	11	10
CONTRACT NO. 70962				
ILLINOIS FED. AID PROJECT				

\* LED RETROFIT AND UPS 2012-1  
\*\* MCLEAN, DOUGLAS

UNINTERRUPTABLE POWER SUPPLY  
(PER LOCATION MAP - SHEET 3)

LOCATION	INTERSECTION	EX. CAB. TY.	UNIT	QUANTITY
6	VETERANS' PKWY & PARKWAY PLAZA	5	EACH	1
7	VETERANS' PKWY & FORT JESSE RD	5	EACH	1
8	VETERANS' PKWY & SHEPARD RD	5	EACH	1
9	VETERANS' PKWY & I-55 SOUTH RAMP	4	EACH	1
10	VETERANS' PKWY & I-55 NORTH RAMP	4	EACH	1
TOTAL =				5 EACH

UNINTERRUPTABLE POWER SUPPLY  
(PER LOCATION MAP - SHEET 4)

LOCATION	INTERSECTION	EX. CAB. TY.	UNIT	QUANTITY
13	VETERANS' PKWY & COMMERCE PKWY	5	EACH	1
14	VETERANS' PKWY & MORRISSEY DR	5	EACH	1
15	VETERANS' PKWY & BRICKYARD DR	5	EACH	1
16	VETERANS' PKWY & MERCER AVE	5	EACH	1
17	VETERANS' PKWY & IRELAND GROVE RD	5	EACH	1
18	VETERANS' PKWY & OAKLAND AVE	5	EACH	1
19	VETERANS' PKWY & LINCOLN ST	5	EACH	1
20	VETERANS' PKWY & JACKSON ST	5	EACH	1
21	VETERANS' PKWY & WASHINGTON ST	5	EACH	1
22	VETERANS' PKWY & EASTLAND AVE	5	EACH	1
23	VETERANS' PKWY & IL 9 SOUTH	5	EACH	1
24	VETERANS' PKWY & IL 9 CENTRAL	5	EACH	1
25	VETERANS' PKWY & IL 9 NORTH	4	EACH	1
26	VETERANS' PKWY & IL 9 WEST	4	EACH	1
27	VETERANS' PKWY & IL 9 EAST	5	EACH	1
28	VETERANS' PKWY & CLEARWATER AVE	4	EACH	1
29	VETERANS' PKWY & GENERAL ELECTRIC RD	5	EACH	1
30	VETERANS' PKWY & JUMAR RD	5	EACH	1
31	VETERANS' PKWY & COLLEGE AVE	5	EACH	1
TOTAL =				19 EACH

FILE NAME =	USER NAME = biggsrd	DESIGNED -	REVISED -	<b>STATE OF ILLINOIS DEPARTMENT OF TRANSPORTATION</b>	SCALE: SHEET OF SHEETS STA. TO STA.	F.A.P. RTE.	SECTION	COUNTY	TOTAL SHEETS	SHEET NO.	
et:\pw\work\pvidot\biggsrd\ld0289275\sign	ls.dgn	DRAWN -	REVISED -			VAR.	*	**	11	11	
PLOT SCALE = 40.0000' / 1"	CHECKED -	REVISED -				CONTRACT NO. 70962					
PLOT DATE = 12/15/2011	DATE -	REVISED -				ILLINOIS FED. AID PROJECT					

\* LED RETROFIT AND UPS 2012-1  
\*\* MCLEAN, DOUGLAS