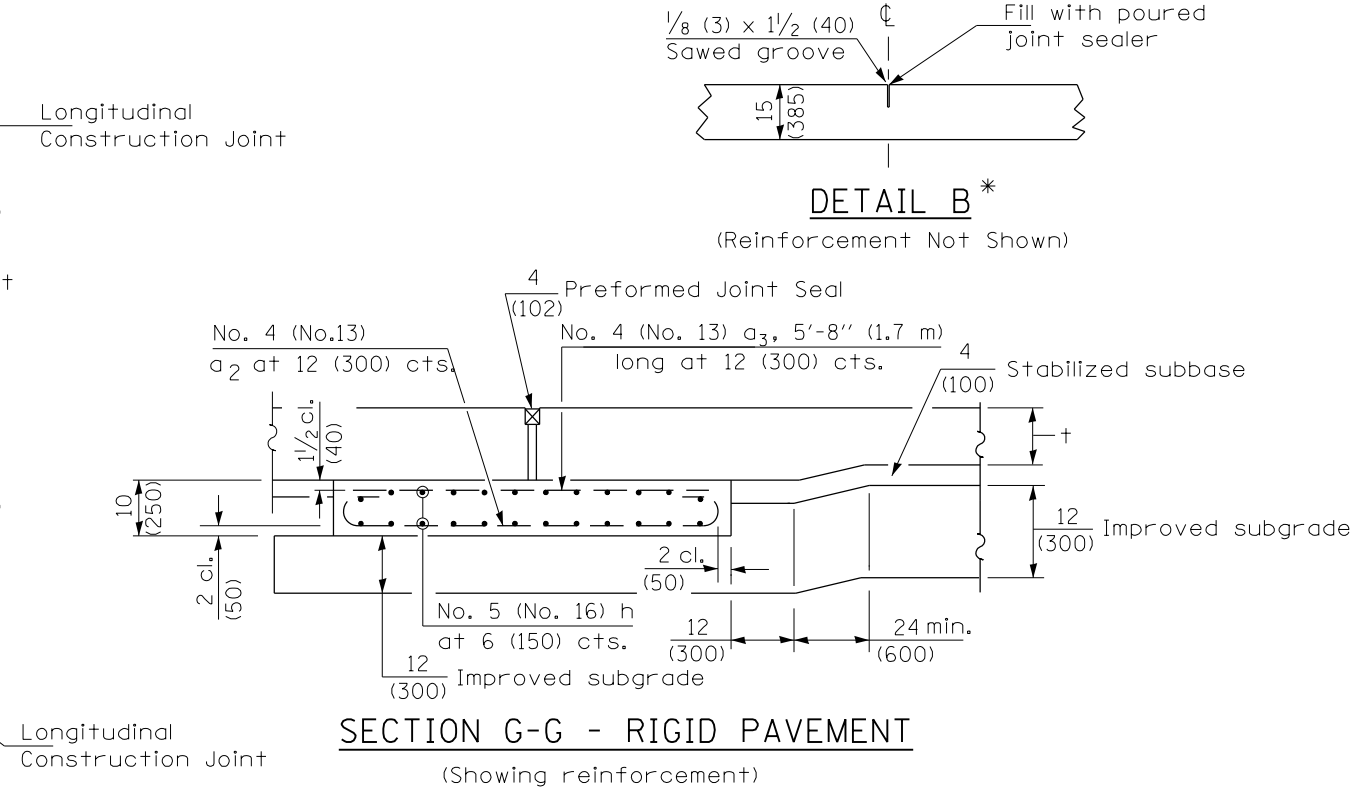
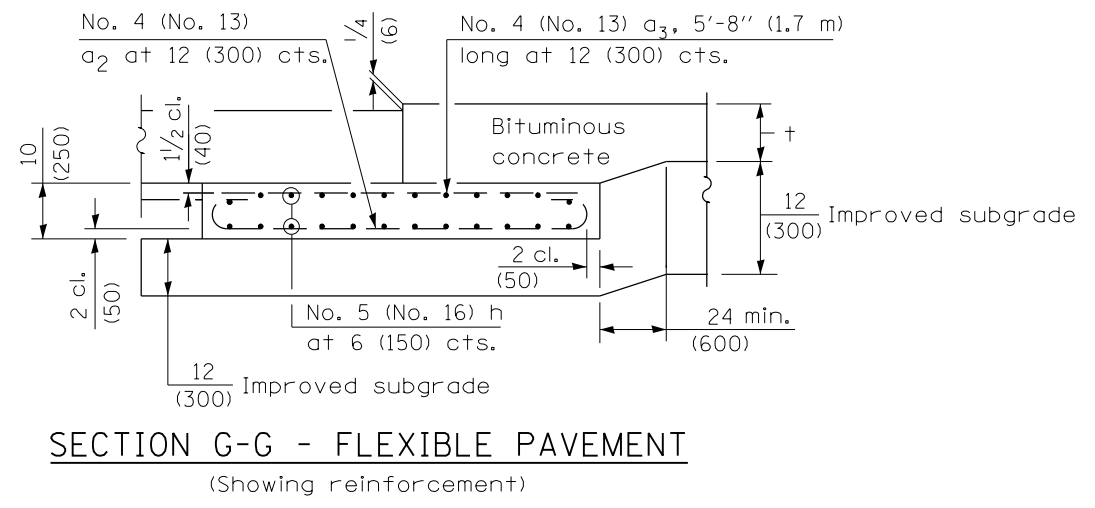


**NEW CONSTRUCTION**



Rigid Pavement only:  
Wide Flange Beam Terminal Joint (See DETAIL AT BEAM - Standard 421101 or 421106) or 2 (50)  
Trans. Exp. Joint as detailed on Standard 420001.

\* Saw  $\perp$  or lane edge if poured two or more lane widths at a time.  
\*\* Omit Reinforcement, tie bars and Long. sawed Jt. for Flexible Pavement.



**NOTE**  
THIS SHEET FOR INFORMATION ONLY

**GENERAL NOTES**

THICKNESS-"t"=Thickness of Pavement.  
See Standard 421001 for reinforcement details not shown.  
See Standard 420001 for joint details not shown.  
All dimensions are in inches (millimeters) unless otherwise shown.

|  |                      |            |                           |   |  |             |      |             |          |        |              |           |
|--|----------------------|------------|---------------------------|---|--|-------------|------|-------------|----------|--------|--------------|-----------|
| FILE NAME =  | USER NAME = sparksgw | DESIGNED - | REVISED -                 | <b>STATE OF ILLINOIS<br/>DEPARTMENT OF TRANSPORTATION</b> | <b>BRIDGE APPROACH PAVEMENT<br/>STANDARD 420401-06</b> |             |      | F.A.P. RTE. | SECTION  | COUNTY | TOTAL SHEETS | SHEET NO. |
| c:\pw\work\p\idot\sparksgw\10280145\067200-sht-details.dgn | DRAWN -              | REVISED -  | 610                       |   |  |             |      | (GI-4)      | SANGAMON | 24     | 16           |           |
| PLOT SCALE = 200.0000' / in.                               | CHECKED -            | REVISED -  | CONTRACT NO. 72F00        |   |  |             |      |             |          |        |              |           |
| PLOT DATE = Dec-21-2011 03:01:11PM                         | DATE -               | REVISED -  | ILLINOIS FED. AID PROJECT |   |  |             |      |             |          |        |              |           |
|  |                      |            |                           | SCALE: NTS  | SHEET 6  | OF 7 SHEETS | STA. | TO STA.     |          |        |              |           |