

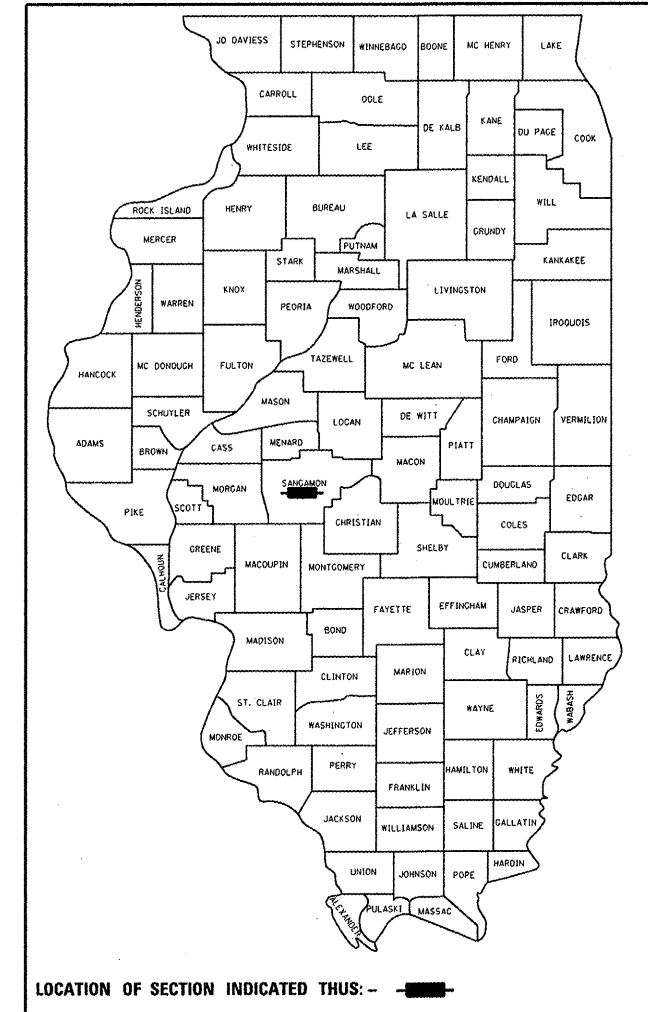
STATE OF ILLINOIS  
DEPARTMENT OF TRANSPORTATION  
DIVISION OF HIGHWAYS

**PROPOSED  
HIGHWAY PLANS**

FAP ROUTE 662 (IL 4-VETERANS PARKWAY)  
SECTION 31-12  
PROJECT  
ISLAND REMOVAL AND REPLACEMENT  
SANGAMON COUNTY  
C-96-028-12

F.A.P. RTE.	SECTION	COUNTY	TOTAL SHEETS	SHEET NO.
662	31-9	SANGAMON	5	1
		ILLINOIS	CONTRACT NO. 72F16	

D-96-028-12

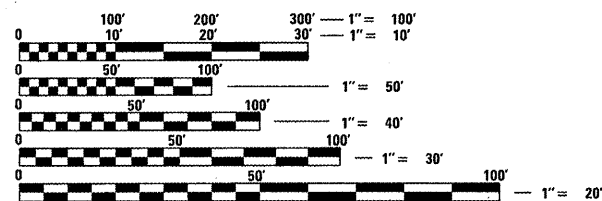
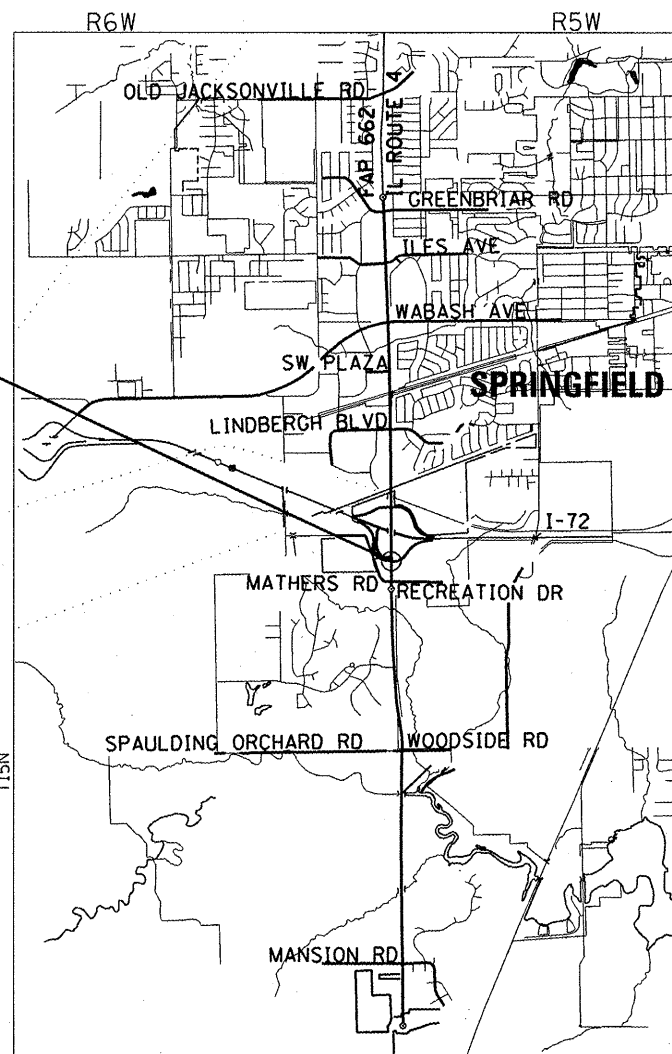


FOR INDEX OF SHEETS, SEE SHEET NO. 2

HIGHWAY CLASSIFICATION

F.A.P. ROUTE 662 (IL 4-VETERANS PARKWAY)

CLASSIFICATION: OTHER PRINCIPLE ARTERIAL  
ADT: 23,300 (2011) PV = 22,335 (95.9%)  
ADT: 35,315 (2032) SU = 675 (2.9%)  
DESIGN SPEED: 50 MPH MU = 290 (1.2%)  
POSTED SPEED: 45 MPH



FULL SIZE PLANS HAVE BEEN PREPARED USING STANDARD ENGINEERING SCALES. REDUCED SIZED PLANS WILL NOT CONFORM TO STANDARD SCALES. IN MAKING MEASUREMENTS ON REDUCED PLANS, THE ABOVE SCALES MAY BE USED.

J.U.L.I.E.  
JOINT UTILITY LOCATION INFORMATION FOR EXCAVATION  
1-800-892-0123  
OR 811

SENIOR TEAM ENGINEER: MARK DUST (217) 785-0597  
TEAM ENGINEER: RENE CABRERA (217) 557-9062

CONTRACT NO. 72F16

GROSS LENGTH = 58.76 FT. = .011 MILE  
NET LENGTH = 58.76 FT. = .011 MILE

STATE OF ILLINOIS  
DEPARTMENT OF TRANSPORTATION  
DIVISION OF HIGHWAYS

SUBMITTED Dec 16 20 11  
Ray Z. Di...  
DEPUTY DIRECTOR OF HIGHWAYS, REGION ENGINEER

Feb 3 20 12  
John D. Baranzelli, P.E.  
acting ENGINEER OF DESIGN AND ENVIRONMENT

Feb 3 20 12  
William R. Fleg  
acting DIRECTOR OF HIGHWAYS, CHIEF ENGINEER

PRINTED BY THE AUTHORITY  
OF THE STATE OF ILLINOIS

# INDEX OF SHEETS

## GENERAL NOTES

- ① WHERE SECTION OR SUBSECTION MONUMENTS ARE ENCOUNTERED, THE ENGINEER SHALL BE NOTIFIED BEFORE SUCH MONUMENTS ARE REMOVED. THE CONTRACTOR SHALL PROTECT AND CAREFULLY PRESERVE ALL PROPERTY MARKS AND MONUMENTS UNTIL THE OWNER, AND AUTHORIZED SURVEYOR OR AGENT HAS WITNESSES OR OTHERWISE REFERENCED THEIR LOCATION.
- ② ANY REFERENCE TO A STANDARD IN THE PLANS SHALL BE INTERPRETED TO MEAN THE EDITION, AS INDICATED BY THE SUB-NUMBER LISTED IN THE INDEX OF SHEETS, OR THE COPY OF THE STANDARD INCLUDED IN THE PLANS.
- ③ THE CONTRACTOR SHALL BE RESPONSIBLE FOR PROTECTING UTILITY PROPERTY FROM CONSTRUCTION OPERATIONS AS OUTLINED IN ARTICLE 107.31 OF THE STANDARD SPECIFICATIONS. THE JULIE NUMBER IS 800-892-0123. A MINIMUM OF FORTY-EIGHT HOURS ADVANCED NOTICE IS REQUIRED. ANY DAMAGE TO THE UNDERGROUND FACILITIES CAUSED BY THE CONTRACTOR SHALL BE REPAIRED TO THE SATISFACTION OF THE DEPARTMENT AT THE CONTRACTOR'S EXPENSE, INCLUDING TEMPORARY REPAIRS WHICH MAY BE REQUIRED TO KEEP THE FACILITY OPERATIONAL WHILE MATERIAL IS BEING OBTAINED TO MAKE PERMANENT REPAIRS.
- ④ THE LOCATIONS OF THOSE BURIED AND ABOVEGROUND UTILITIES SHOWN ARE APPROXIMATE, ARE SHOWN FOR CONTRACTOR INFORMATIONAL USE ONLY, AND ARE NOT TO BE REFERENCED FOR CONSTRUCTION PURPOSES. THE IMPLIED PRESENCE OR ABSENCE OF UTILITIES IS NOT TO BE CONSTRUED BY THE OWNER, ENGINEER, CONTRACTOR OR SUBCONTRACTORS TO BE AN ACCURATE AND COMPLETE REPRESENTATION OF UTILITIES THAT MAY OR MAY NOT EXIST ON THE CONSTRUCTION SITE. BURIED AND ABOVE GROUND UTILITY LOCATIONS, IDENTIFICATION, AND MARKING ARE THE SOLE RESPONSIBILITY OF THE CONTRACTOR. REROUTING, DISCONNECTION, PROTECTION, ...ETC OF ANY UTILITIES MUST BE COORDINATED BETWEEN CONTRACTOR, UTILITY COMPANY, AND OWNER. SITE SAFETY, INCLUDING THE AVOIDANCE OF HAZARDOUS ASSOCIATED WITH BURIED AND ABOVE GROUND UTILITIES REMAIN THE SOLE RESPONSIBILITY OF THE CONTRACTOR.
- ⑤ IN ADDITION TO FIELD AND AERIAL SURVEYS, PLAN DIMENSIONS AND DETAILS RELATIVE TO THE EXISTING FACILITIES HAVE BEEN TAKEN FROM EXISTING PLANS AND ARE SUBJECT TO CONSTRUCTION VARIATIONS. IT SHALL BE THE CONTRACTOR'S RESPONSIBILITY TO VERIFY SUCH DIMENSIONS AND DETAILS IN THE FIELD. SUCH VARIATIONS SHALL NOT BE A CAUSE FOR ADDITIONAL COMPENSATION DUE TO A CHANGE IN THE SCOPE OF WORK. HOWEVER, THE CONTRACTOR WILL BE PAID FOR THE QUANTITY ACTUALLY FURNISHED AT THE UNIT PRICE BID FOR THE WORK.
- ⑥ EXISTING CURB HEIGHT AT THE ISLAND SHALL BE INCREASED FROM 2" TO 6". PROPOSED GUTTERS SHALL BE GRADED TO ASSURE THAT THE EXISTING DIRECTION OF DRAINAGE FLOW IS MAINTAINED AND THAT ALL DRAINAGE FLOWS OFF THE ISLAND. THIS WORK SHALL BE DONE TO THE SATISFACTION OF THE ENGINEER.

## COMMITMENTS

THE RESIDENT ENGINEER SHALL CONTACT STUDIES AND PLANS CONCERNING ANY MAJOR PLAN CHANGE. TO MAKE SURE NO PREVIOUS COMMENTS (NOT LISTED) WERE MADE AFFECTING THE DESIGN AND ALLOW AN IMPROVED DESIGN FOR FUTURE PROJECTS.

## INDEX OF SHEETS

- 1 COVER SHEET
- 2 INDEX OF SHEETS
- 3 SUMMARY OF QUANTITIES
- 4 PLAN SHEET
- 5 PRISMATIC CURB REFLECTORS

## STANDARDS

000001-06	STANDARD SYMBOLS, ABBREVIATIONS, AND PATTERNS
606001-04	CONCRETE CURB TYPE B AND COMBINATION CONCRETE CURB AND GUTTER
606301-04	PC CONCRETE ISLANDS AND MEDIANS
701701-08	URBAN LANE CLOSURE MULTILANE INTERSECTION
701901-02	TRAFFIC CONTROL DEVICES
814001-02	HANDHOLES
878001-09	CONCRETE FOUNDATION DETAILS

DISTRICT SIX			
EXAMINED	<i>Bill Beyer</i> 12/6	20	11
OPERATIONS ENGINEER			
EXAMINED	DEC 7 <i>[Signature]</i>	20	11
PROJECT IMPLEMENTATION ENGINEER			
EXAMINED	December 6 <i>[Signature]</i>	20	11
PROGRAM DEVELOPMENT ENGINEER			

FILE NAME =	USER NAME = cabrerars	DESIGNED - RSC	REVISED -	<b>STATE OF ILLINOIS DEPARTMENT OF TRANSPORTATION</b>	<b>INDEX OF SHEETS</b>	F.A.P. RTE.	SECTION	COUNTY	TOTAL SHEETS	SHEET NO.	
cd:\pv_work\pwidot\cabrerars\d0285589\08	xxxxx-sh1-genote.dgn	DRAWN -	REVISED -			662	31-12	SANGAMON	5	2	
	PLOT SCALE = 48.8888 / in.	CHECKED -	REVISED -			CONTRACT NO. 72F16					
	PLOT DATE = Dec-15-2011 11:31:49AM	DATE -	REVISED -			ILLINOIS FED. AID PROJECT					
						SCALE:	SHEET NO. 1 OF 1 SHEETS		STA.	TO STA.	

CODE NO.	ITEM	UNIT	TOTAL QUANTITY	CONSTR. CODE
				100% STATE URBAN ROADWAY 0021 URBAN
44000100	PAVEMENT REMOVAL	SO YD	11	11
44000500	COMBINATION CURB AND GUTTER REMOVAL	FOOT	55	55
60608600	COMBINATION CONCRETE CURB AND GUTTER, TYPE M-6.06	FOOT	17	17
60610400	COMBINATION CONCRETE CURB AND GUTTER, TYPE M-6.24	FOOT	29	29
60610900	COMBINATION CONCRETE CURB AND GUTTER, TYPE M-6.24 ( VARIABLE WIDTH GUTTER FLAG)	FOOT	10	10
60618300	CONCRETE MEDIAN SURFACE, 4 INCH	SO FT	130	130
67100100	MOBILIZATION	L SUM	1	1
70102635	TRAFFIC CONTROL AND PROTECTION, STANDARD 701701	L SUM	1	1
70103815	TRAFFIC CONTROL SURVEILLANCE	CAL DA	5	5
78200300	PRISMATIC CURB REFLECTOR	EACH	10	10
89502376	REBUILD EXISTING HANDHOLE	EACH	1	1
X4402020	CONCRETE MEDIAN SURFACE REMOVAL	SO FT	134	134
• X7800640	URETHANE PAVEMENT MARKING - LINE 8"	FOOT	201	201
• X7800650	URETHANE PAVEMENT MARKING - LINE 12"	FOOT	55	55

• SPECIALTY ITEMS

FILE NAME =	USER NAME = sparksgv	DESIGNED - RSC	REVISED -
et:\pw\work\pwidat\sparksgv\d0285589\06xxxx-sht-500.dgn		DRAWN - RSC	REVISED -
	PLOT SCALE = 100.0000' / 1"	CHECKED -	REVISED -
	PLOT DATE = Dec-19-2011 08:56:53AM	DATE -	REVISED -

STATE OF ILLINOIS  
DEPARTMENT OF TRANSPORTATION

SUMMARY OF QUANTITIES

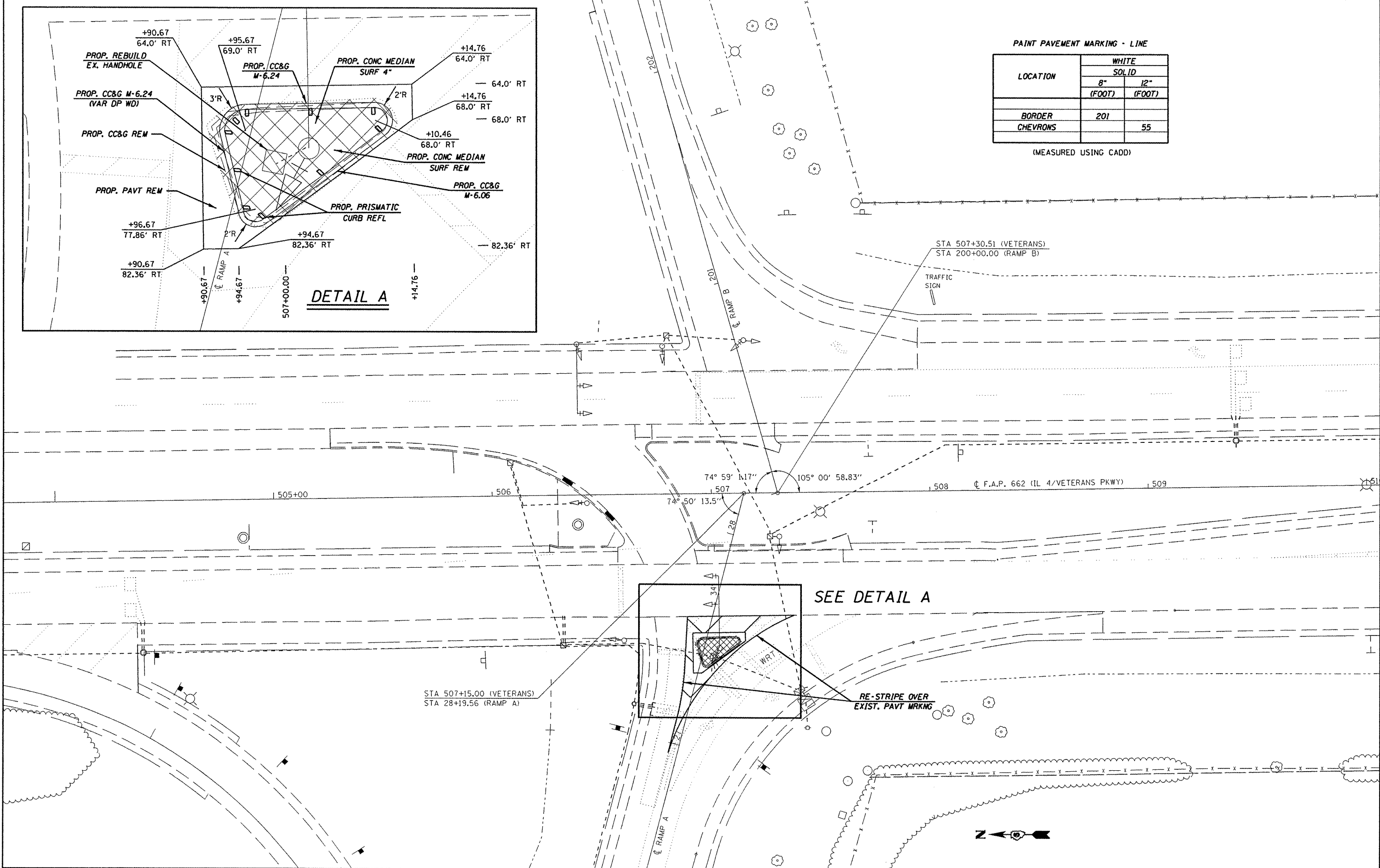
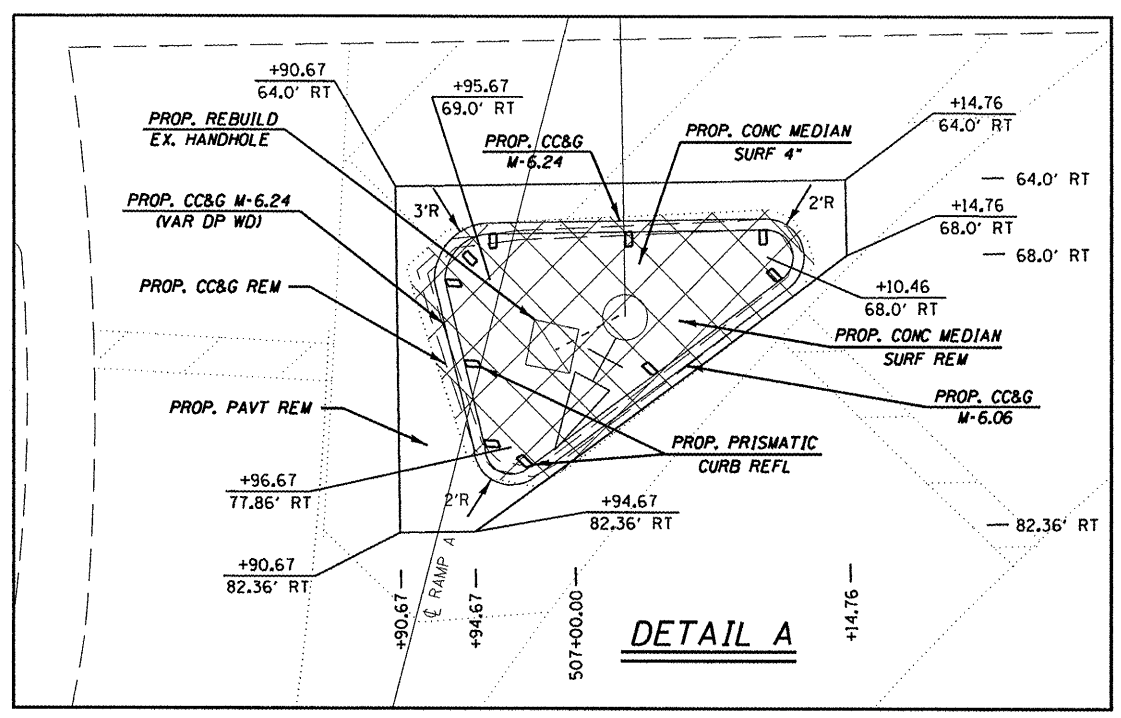
SCALE: SHEET 1 OF 1 SHEETS STA. TO STA.

F.A.P. RTE.	SECTION	COUNTY	TOTAL SHEETS	SHEET NO.
0002	31-12	SANGAMON	3	5
ILLINOIS FED. AID PROJECT			CONTRACT NO. 72F16	

PAINT PAVEMENT MARKING - LINE

LOCATION	WHITE SOLID	
	8" (FOOT)	12" (FOOT)
BORDER	201	
CHEVRONS		55

(MEASURED USING CADD)



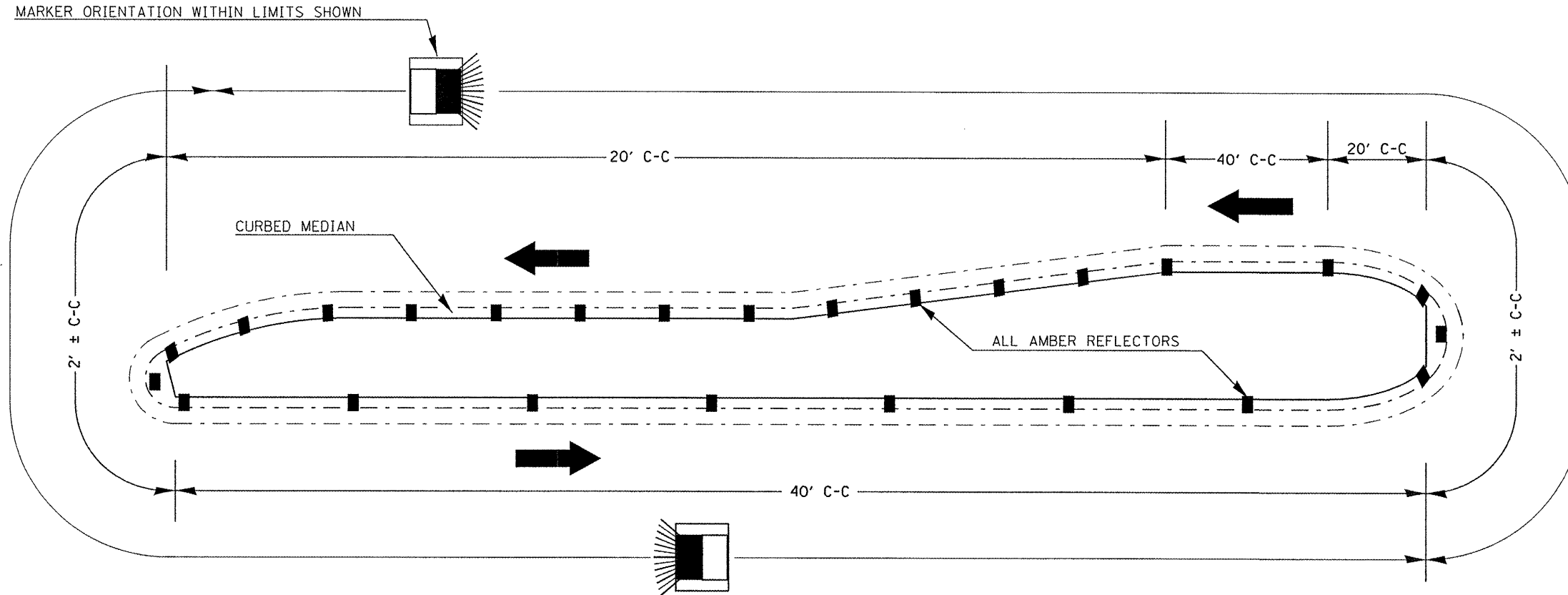
FILE NAME =	USER NAME = sparksgw	DESIGNED - RSC	REVISED -
es:\pwwork\pvidot\sparksgw\d0285589\106\...xsh\plan.dgn		DRAWN - RSC	REVISED -
	PLOT SCALE = 40.0000' / 1\"/>		
	PLOT DATE = Dec-19-2011 08:57:01AM	CHECKED -	REVISED -
		DATE -	REVISED -

STATE OF ILLINOIS  
DEPARTMENT OF TRANSPORTATION

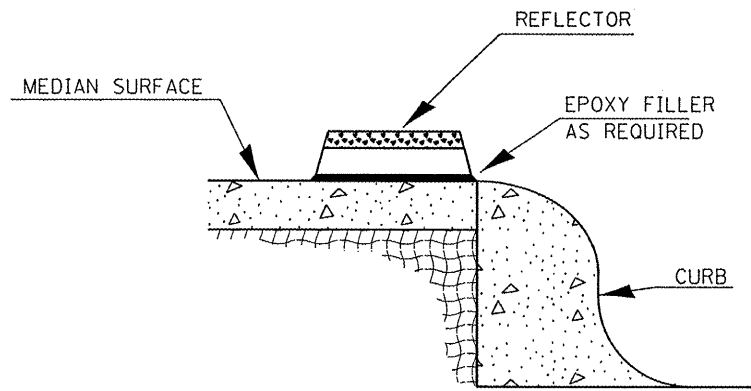
PLAN SHEET  
SCALE: SHEET 1 OF 1 SHEETS STA. TO STA.

F.A.P. RTE.	SECTION	COUNTY	TOTAL SHEETS	SHEET NO.
662	31-12	SANGAMON	4	5
CONTRACT NO. 72F16				
ILLINOIS FED. AID PROJECT				

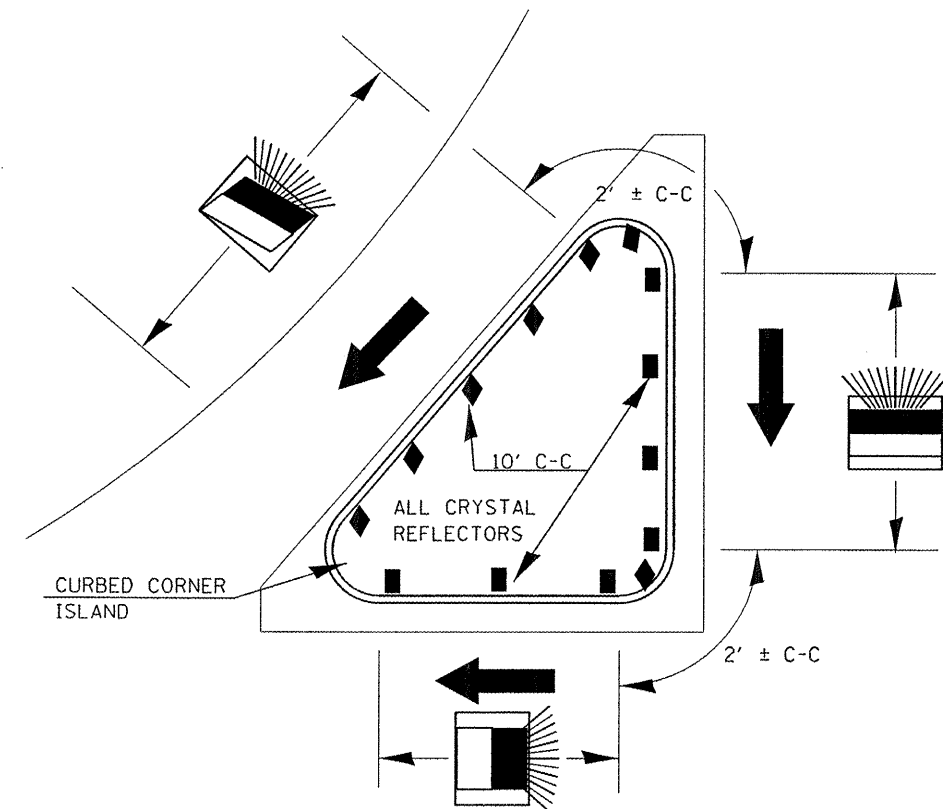
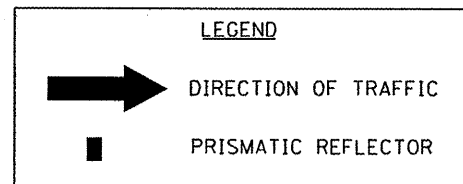
# TYPICAL PLACEMENT OF PRISMATIC REFLECTORS ON CURBS



1. PRISMATIC REFLECTORS SHALL BE MONO-DIRECTIONAL AND POSITIONED SO THAT THE REFLECTIVE FACE IS FACING THE APPROACHING TRAFFIC.
2. PRISMATIC REFLECTORS SHALL BE SECURED IN PLACE WITH AN EPOXY ADHESIVE.
3. PRISMATIC REFLECTORS SHALL BE EITHER AMBER OR CRYSTAL IN COLOR.
4. REFER TO SCHEDULES FOR PRISMATIC REFLECTOR QUANTITIES.



SECTION VIEW



FILE NAME =	USER NAME = sparksgu	DESIGNED -	REVISED -
c:\pwwork\pwwork\sparksgu\d0285589\06\...sht-details.dgn		DRAWN -	REVISED -
PLOT SCALE = 40.0000' / 1"		CHECKED -	REVISED -
PLOT DATE = Dec-19-2011 08:57:08AM		DATE -	REVISED -

**STATE OF ILLINOIS  
DEPARTMENT OF TRANSPORTATION**

**PRISMATIC CURB REFLECTOR  
DETAIL SHEET**

SCALE: SHEET 1 OF 1 SHEETS STA. TO STA.

F.A.P. RTE.	SECTION	COUNTY	TOTAL SHEETS	SHEET NO.
662	3I-12	SANGAMON	5	5
CONTRACT NO. 72F16				
ILLINOIS FED. AID PROJECT				