

**INDEX OF SHEETS**

- 1 COVER SHEET
- 2 GENERAL NOTES
- 3 SUMMARY OF QUANTITIES
- 4 TYPICAL SECTIONS
- 5 SCHEDULE OF QUANTITIES
- 6 PLAN SHEET
- 7 EXPANSION JOINT DETAIL
- 8 INLET RECONSTRUCTION DETAIL

**HIGHWAY STANDARDS**

- 000001-06
- 609006-05
- 701101-02
- 701400-05
- 701406-06
- 701411-08
- 701901-02

**STATE OF ILLINOIS**  
**DEPARTMENT OF TRANSPORTATION**  
**DIVISION OF HIGHWAYS**  
**PROPOSED**  
**HIGHWAY PLANS**

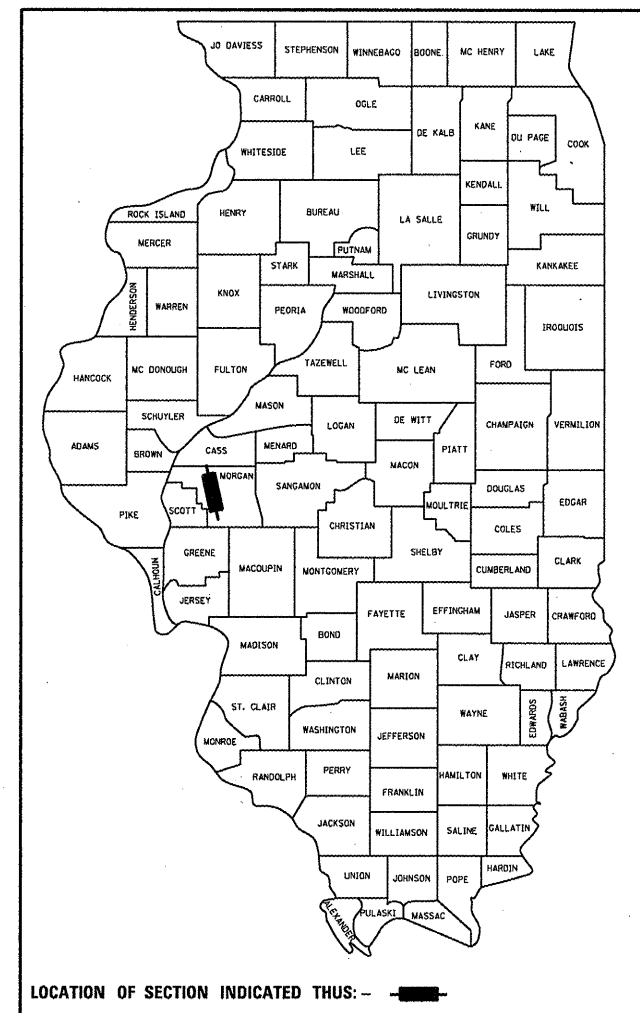
**FAP 310 (US 67)**  
**SECTION (69-1) I-2**

**RESURFACING BRIDGE APPROACH**  
**MORGAN COUNTY**

C-96-030-12

F.A.P. RTE.	SECTION	COUNTY	TOTAL SHEETS	SHEET NO.
310	(69-1) I-2	MORGAN	8	1
		ILLINOIS	CONTRACT NO. 72F18	

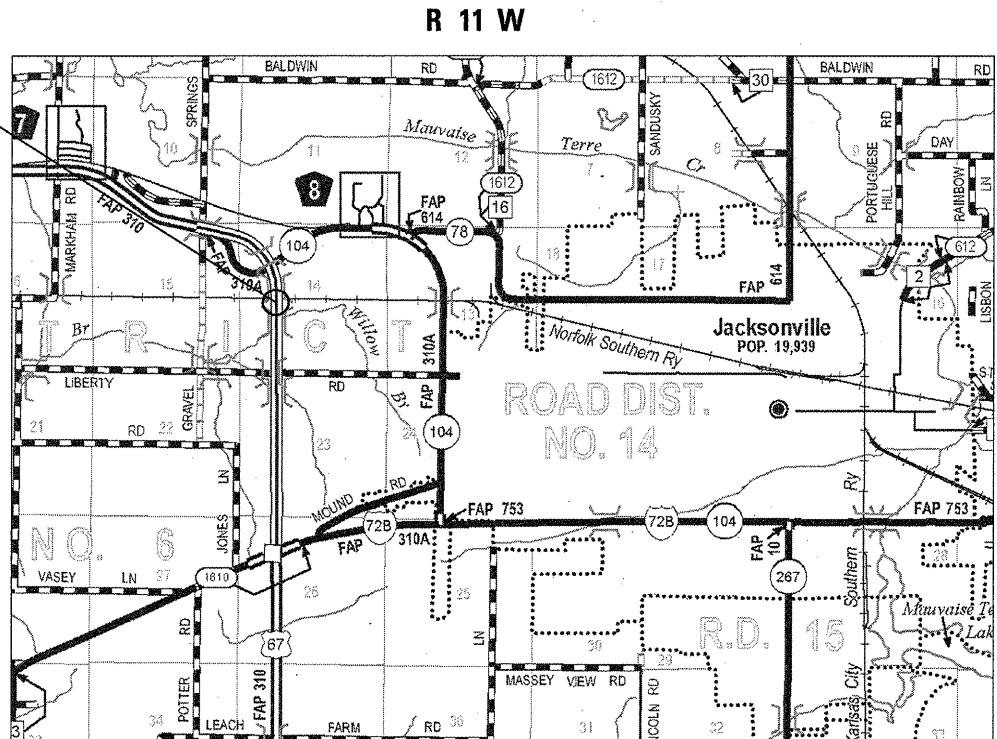
D-96-030-12



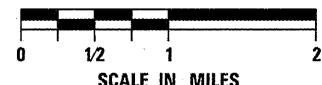
LOCATION OF SECTION INDICATED THUS: - [black rectangle] -

ADT = 4250 (2009)  
 PU = 87.06% SU = 5.29% MU = 7.65%

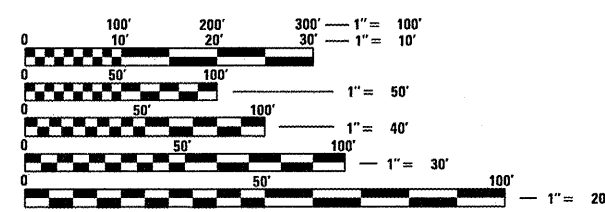
**PROJECT LOCATION**  
 STA 561 + 72.00 TO  
 STA 562 + 22.00



**LOCATION MAP**



GROSS LENGTH = 50.0 FT. = 0.01 MILES  
 NET LENGTH = 50.0 FT. = 0.01 MILES



FULL SIZE PLANS HAVE BEEN PREPARED USING STANDARD ENGINEERING SCALES. REDUCED SIZED PLANS WILL NOT CONFORM TO STANDARD SCALES. IN MAKING MEASUREMENTS ON REDUCED PLANS, THE ABOVE SCALES MAY BE USED.

J.U.L.I.E.  
 JOINT UTILITY LOCATION INFORMATION FOR EXCAVATION  
 1-800-892-0123  
 OR 811

PROJECT ENGINEER: JEFF MYERS PH. 217-782-4761  
 TEAM MANAGER: TOM COX PH. 217-524-7940

CONTRACT NO. 72F18

STATE OF ILLINOIS  
 DEPARTMENT OF TRANSPORTATION  
 DIVISION OF HIGHWAYS

SUBMITTED December 22, 2011  
Page 2 of 2  
 DEPUTY DIRECTOR OF HIGHWAYS, REGION ENGINEER  
Feb 3 2012  
John D. Baranzelli, P.E.  
 acting ENGINEER OF DESIGN AND ENVIRONMENT  
Feb 3 2012  
William R. Frey, Jr.  
 acting DIRECTOR OF HIGHWAYS, CHIEF ENGINEER

**PRINTED BY THE AUTHORITY**  
**OF THE STATE OF ILLINOIS**

GENERAL NOTES

- THE CONTRACTOR SHALL BE RESPONSIBLE FOR PROTECTING UTILITY PROPERTY FROM CONSTRUCTION OPERATIONS AS OUTLINED IN ARTICLE 107.31 OF THE STANDARD SPECIFICATIONS. THE JULIE NUMBER IS 800-892-0123. A MINIMUM OF FORTY-EIGHT HOURS ADVANCE NOTICE IS REQUIRED. ANY DAMAGE TO THE UNDERGROUND FACILITIES, CAUSED BY THE CONTRACTOR SHALL BE REPAIRED TO THE SATISFACTION OF THE DEPARTMENT AT THE CONTRACTOR'S EXPENSE, INCLUDING TEMPORARY REPAIRS WHICH MAY BE REQUIRED TO KEEP THE FACILITY OPERATIONAL WHILE MATERIAL IS BEING OBTAINED TO MAKE PERMANENT REPAIRS.
- THE LOCATIONS OF THOSE BURIED AND ABOVEGROUND UTILITIES SHOWN ARE APPROXIMATE, ARE SHOWN FOR CONTRACTOR INFORMATIONAL USE ONLY, AND ARE NOT TO BE REFERENCED FOR CONSTRUCTIONS PURPOSES. THE IMPLIED PRESENCE OR ABSENCE OF UTILITIES IS NOT TO BE CONSTRUED BY THE OWNER, ENGINEER, CONTRACTOR, OR SUBCONTRACTORS TO BE AN ACCURATE AND COMPLETE REPRESENTATION OF UTILITIES THAT MAY OR MAY NOT EXIST ON THE CONSTRUCTION SITE. BURIED AND ABOVEGROUND UTILITY LOCATION, IDENTIFICATION, AND MARKING ARE THE SOLE RESPONSIBILITY OF THE CONTRACTOR. REROUTING, DISCONNECTION, PROTECTION, ETC. OF ANY UTILITIES MUST BE COORDINATED BETWEEN THE CONTRACTOR, UTILITY COMPANY, AND OWNER. SITE SAFETY, INCLUDING THE AVOIDANCE OF HAZARDS ASSOCIATED WITH BURIED AND ABOVEGROUND UTILITIES, REMAINS THE SOLE RESPONSIBILITY OF THE CONTRACTOR.
- THE THICKNESS OF HOT-MIX ASPHALT MIXTURES SHOWN ON THE PLANS IS THE NOMINAL THICKNESS. DEVIATIONS FROM THE NOMINAL THICKNESS WILL BE PERMITTED WHEN SUCH DEVIATIONS OCCUR DUE TO IRREGULARITIES IN THE EXISTING SURFACE OR BASE ON WHICH THE BITUMINOUS MIXTURE IS PLACED.
- ALL ELEVATIONS REFER TO U. S. G. S. MEAN SEA LEVEL DATUM.
- THE FOLLOWING RATES OF APPLICATION HAVE BEEN USED IN CALCULATING PLAN QUANTITIES:  

BITUMINOUS MATERIAL (PRIME COAT)	0.00038	TON/SQ YD
HOT-MIX ASPHALT SURF CSE	112	LBS/SQ YD*IN
- ANY REFERENCE TO A STANDARD IN THESE PLANS SHALL BE INTERPRETED TO MEAN THE EDITION AS INDICATED BY THE SUBNUMBER LISTED ON THE INDEX OF SHEETS OR THE COPY OF THE STANDARD INCLUDED IN THESE PLANS.
- UNLESS NOTED OTHERWISE, STATIONS AND OFFSETS REFER TO CENTERLINE OF PROJECT.
- IN ADDITION TO FIELD SURVEYS AND AERIAL SURVEYS, PLAN DIMENSIONS AND DETAILS RELATIVE TO THE EXISTING FACILITIES HAVE BEEN TAKEN FROM EXISTING PLANS AND ARE SUBJECT TO CONSTRUCTION VARIATIONS. IT SHALL BE THE CONTRACTOR'S RESPONSIBILITY TO VERIFY SUCH DIMENSIONS AND DETAILS IN THE FIELD. SUCH VARIATIONS SHALL NOT BE A CAUSE FOR ADDITIONAL COMPENSATION DUE TO A CHANGE IN THE SCOPE OF THE WORK. HOWEVER, THE CONTRACTOR WILL BE PAID FOR THE QUANTITY ACTUALLY FURNISHED AT THE UNIT PRICE BID FOR THE WORK.
- WHERE SECTION OR SUBSECTION MONUMENTS ARE ENCOUNTERED, THE ENGINEER SHALL BE NOTIFIED BEFORE SUCH MONUMENTS ARE REMOVED. THE CONTRACTOR SHALL PROTECT AND CAREFULLY PRESERVE ALL MONUMENTS UNTIL AN AUTHORIZED SURVEYOR OR AGENT HAS WITNESSED OR OTHERWISE REFERENCED THEIR LOCATION. THE CONTRACTOR SHALL BE RESPONSIBLE FOR HAVING AN AUTHORIZED SURVEYOR RE-ESTABLISH ANY SECTION OR SUBSECTION MONUMENTS DESTROYED BY HIS OPERATIONS.
- THERE IS ONE RAISED REFLECTIVE PAVEMENT MARKER WITHIN THE RESURFACING LIMITS. THE COST OF REMOVING THE RPM SHALL NOT BE PAID SEPARATELY BUT INCLUDED IN THE COST OF THE ASSOCIATED PAY ITEMS.

The following mixture requirements are applicable for this project:

Mix No.	
Mixture Use(s)	Surface
AC/PG:	PG 64-22
Design Air Voids:	4.0% @ N Design=70
Mixture Composition: (Gradation Mixture)	IL 9.5 or 12.5
Friction Aggregate:	Mix "C"

SUGGESTED SEQUENCE OF OPERATIONS

- CLOSE THE DRIVING LANE USING STANDARD 701406.
- MILL THE DRIVING LANE AND OUTSIDE SHOULDER.
- COVER THE INLET WITH PLYWOOD, STEEL PLATE, OR SIMILAR.
- PAVE THE DRIVING LANE AND OUTSIDE SHOULDER PAVING OVER BOTH THE EXPANSION JOINT AND INLETS.
- MOVE LANE CLOSURE TO PASSING LANE USING STANDARD 701406.
- MILL THE PASSING LANE AND INSIDE SHOULDER.
- COVER THE INLET WITH PLYWOOD, STEEL PLATE, OR SIMILAR.
- PAVE THE PASSING LANE AND INSIDE SHOULDER PAVING OVER BOTH THE EXPANSION JOINT AND INLETS.
- CLOSE THE DRIVING LANE USING STANDARD 701406.
- SAW CUT THE HMA SURFACE AT THE OUTSIDE INLET. REMOVE THE HMA SURFACE AT THE INLET. REMOVE THE CASTING AND GRATE BY CHIPPING OUT THE CONCRETE AROUND THE CASTING. FORM THE INLET TO THE PROPOSED ELEVATION.
- SAW CUT THE HMA SURFACE FOR THE POLYMER CONCRETE EXPANSION JOINT IN THE DRIVING LANE AND OUTSIDE SHOULDER. REMOVE THE HMA SURFACE AT THE EXPANSION JOINT.
- POUR THE POLYMER CONCRETE AT THE DRIVING LANE EXPANSION JOINT AND OUTSIDE INLET. PLACE THE SILICONE JOINT SEALER AFTER POLYMER CONCRETE SETS UP.
- CLOSE THE PASSING LANE USING STANDARD 701406.
- SAW CUT THE HMA SURFACE AT THE INSIDE INLET. REMOVE THE HMA SURFACE AT THE INLET. REMOVE THE CASTING AND GRATE BY CHIPPING OUT THE CONCRETE AROUND THE CASTING. FORM THE INLET TO THE PROPOSED ELEVATION.
- SAW CUT THE HMA SURFACE FOR THE POLYMER CONCRETE EXPANSION JOINT IN THE PASSING LANE AND OUTSIDE SHOULDER. REMOVE THE HMA SURFACE AT THE EXPANSION JOINT.
- POUR THE POLYMER CONCRETE AT THE PASSING LANE EXPANSION JOINT AND OUTSIDE INLET. PLACE THE SILICONE JOINT SEALER AFTER POLYMER CONCRETE SETS UP.

COMMITMENTS:

THERE ARE NO COMMITMENTS

DISTRICT SIX	
EXAMINED	Dec 19 20 11
<i>William W. Berger</i>	
OPERATIONS ENGINEER	

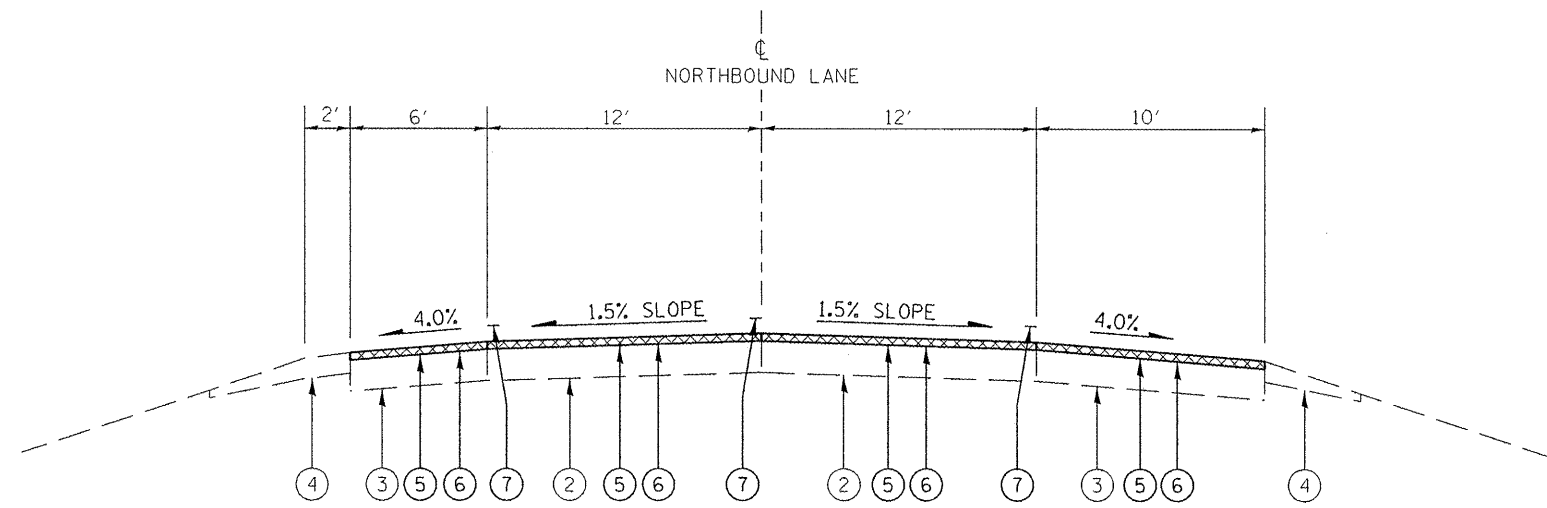
EXAMINED	DEC 19 20 11
<i>Tommy Lee</i>	
PROJECT IMPLEMENTATION ENGINEER	
EXAMINED	By [Signature] 20 11
PROGRAM DEVELOPMENT ENGINEER	

SUMMARY OF QUANTITIES			100% STATE
CODE NO	ITEM	UNIT	CONSTRUCTION TYPE CODE 0005
40600200	BITUMINOUS MATERIALS (PRIME COAT)	TON	0.1
40600985	PORTLAND CEMENT CONCRETE SURFACE REMOVAL - BUTT JOINT	SQ YD	226
40603315	HOT-MIX ASPHALT SURFACE COURSE, MIX "C", N70	TON	28
67100100	MOBILIZATION	L SUM	1
70100420	TRAFFIC CONTROL AND PROTECTION, STANDARD 701411	EACH	1
70100700	TRAFFIC CONTROL AND PROTECTION, STANDARD 701406	L SUM	1
X6026800	INLETS TO BE RECONSTRUCTED (SPECIAL)	EACH	2
X7800620	URETHANE PAVEMENT MARKING - LINE 5"	FOOT	120
Z0021916	SILICONE JOINT SEALER, 3"	FOOT	40
Z0041895	POLYMER CONCRETE	CUFT	4.9

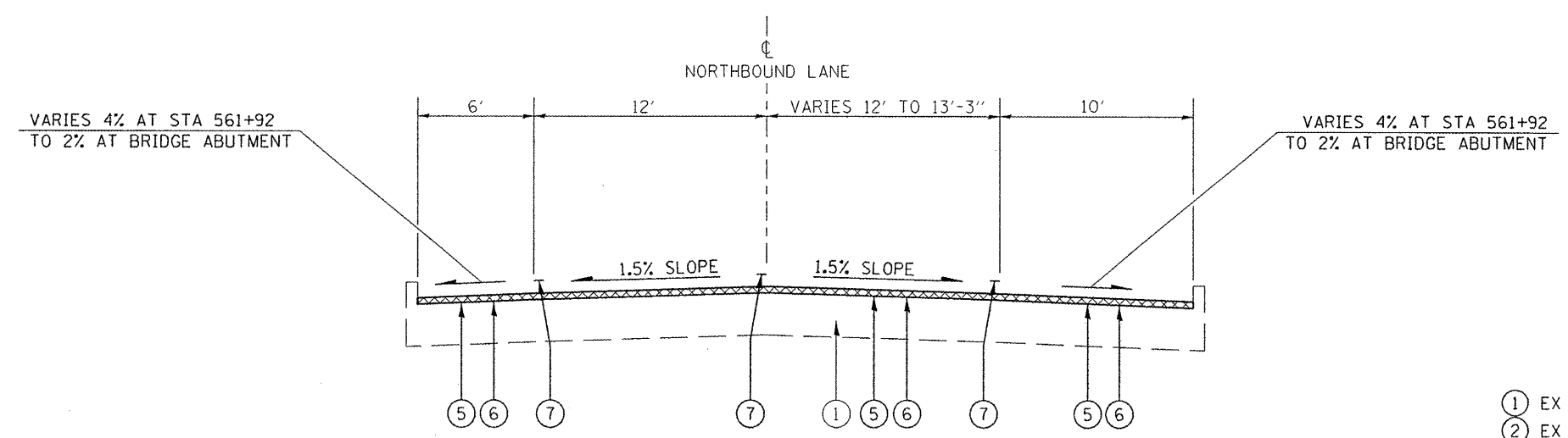
X

X SPECIALTY  
ITEM

FILE NAME =	USER NAME = coxte	DESIGNED -	REVISED -	<b>STATE OF ILLINOIS DEPARTMENT OF TRANSPORTATION</b>	<b>SUMMARY OF QUANTITIES FAP 310 (US 67)</b>	F.A.P. RTE.	SECTION	COUNTY	TOTAL SHEETS	SHEET NO.
ct:\pwwork\pwwork\coxte\0280514\0672F18-sh1-500.dgn	DRAWN -	REVISED -	310			(69-1) 1-2	MORGAN	8	3	
PLOT SCALE = 100.0000' / 1"	CHECKED -	REVISED -	CONTRACT NO. 72F18							
PLOT DATE = Dec-22-2011 01:19:28PM	DATE -	REVISED -	ILLINOIS FED. AID PROJECT							
				SCALE:	SHEET OF SHEETS	STA.	TO STA.			



TYPICAL #1  
 FAP 310 (US 67)  
 STA 561+72 TO STA 561+92



TYPICAL #2  
 FAP 310 (US 67)  
 STA 561+92 TO STA 562+22

- LEGEND
- ① EX BRIDGE APPROACH PAVEMENT
  - ② EX PORTLAND CEMENT CONCRETE PAVEMENT 10" (JOINTED)
  - ③ EX PORTLAND CEMENT CONCRETE SHOULDER 10"
  - ④ EX AGGREGATE SHOULDER, TYPE B
  - ⑤ PR PORTLAND CEMENT CONCRETE SURFACE REMOVAL - BUTT JOINT
  - ⑥ PR HOT-MIX ASPHALT SURFACE COURSE, MIX "C", N70
  - ⑦ PR URETHANE PAVEMENT MARKING - LINE 5"

FILE NAME =	USER NAME = coxte	DESIGNED -	REVISED -	<b>STATE OF ILLINOIS DEPARTMENT OF TRANSPORTATION</b>	<b>TYPICAL SECTIONS FAP 310 (US 67)</b>		F.A.P. RTE.	SECTION	COUNTY	TOTAL SHEETS	SHEET NO.
e:\pwwork\p1dot\coxte\02288514\067218\sh-typical.dgn	DRAWN -	REVISED -	310				169-1) 1-2	MORGAN	8	4	
PLOT SCALE = 81.7723' / in.	CHECKED -	REVISED -	CONTRACT NO. 72F18								
PLOT DATE = Dec-22-2011 01:28:35PM	DATE -	REVISED -	ILLINOIS FED. AID PROJECT								
					SCALE:	SHEET	OF	SHEETS	STA.	TO STA.	

BITUMINOUS MATERIALS (PRIME COAT)				
LOCATION	LENGTH (FOOT)	WIDTH (FOOT)	AREA (SQ YD)	QUANTITY (TON)
STA 561+72 TO 562+22	50	40.6	226	0.1

PORTLAND CEMENT CONCRETE SURFACE REMOVAL - BUTT JOINT			
LOCATION	LENGTH (FOOT)	WIDTH (FOOT)	QUANTITY (SQ YD)
STA 561+72 TO 562+22	50	40.6	226

HOT-MIX ASPHALT SURFACE COURSE, MIX "C", N70				
LOCATION	LENGTH (FOOT)	WIDTH (FOOT)	AREA (SQ YD)	QUANTITY (TON)
STA 561+72 TO 562+22	50	40.6	226	28

MOBILIZATION	
LOCATION	L SUM
JOB SITE	1

TRAFFIC CONTROL AND PROTECTION, STANDARD 701411	
LOCATION	L SUM
US 67 FOR EXIT TO IL 104 EAST	1

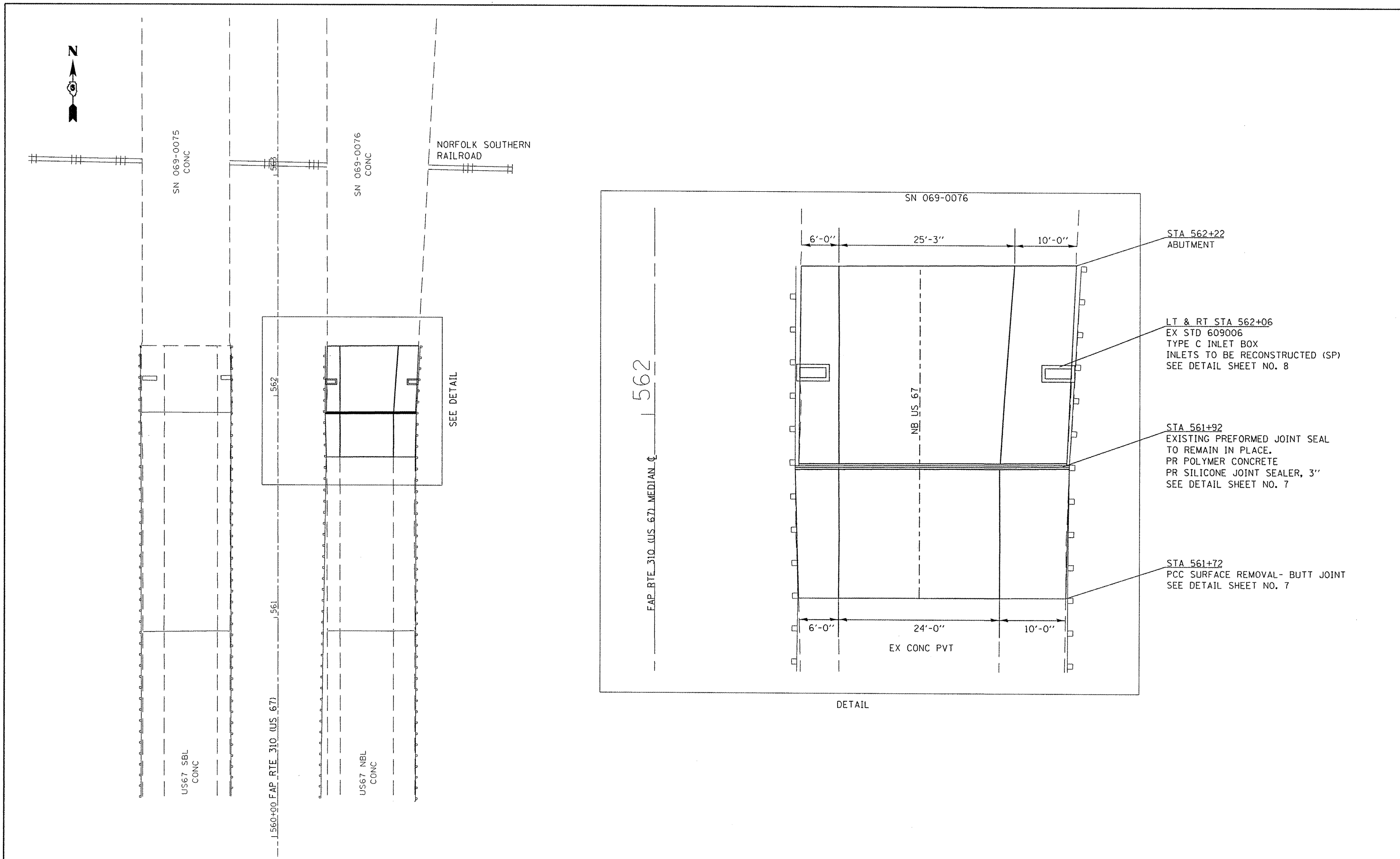
TRAFFIC CONTROL AND PROTECTION, STANDARD 701406	
LOCATION	L SUM
US 67	1

INLETS TO BE RECONSTRUCTED (SPECIAL)	
LOCATION	EACH
LT & RT STA 562+06	2

URETHANE PAVEMENT MARKING - LINE 5"	
LOCATION	FOOT
LT STA 561+72 TO 562+22 - OUTSIDE EOP - YELLOW	50
LT STA 561+72 TO 562+22 - SKIP DASH - WHITE	20
LT STA 561+72 TO 562+22 - INSIDE EOP - WHITE	50
TOTAL	120

SILICONE JOINT SEALER, 3"	
LOCATION	FOOT
STA 561+92	40

POLYMER CONCRETE				
LOCATION	LENGTH (FOOT)	WIDTH (IN)	AVERAGE DEPTH (IN)	QUANTITY (CU FT)
STA 561+92	40	7.0	2.50	4.9

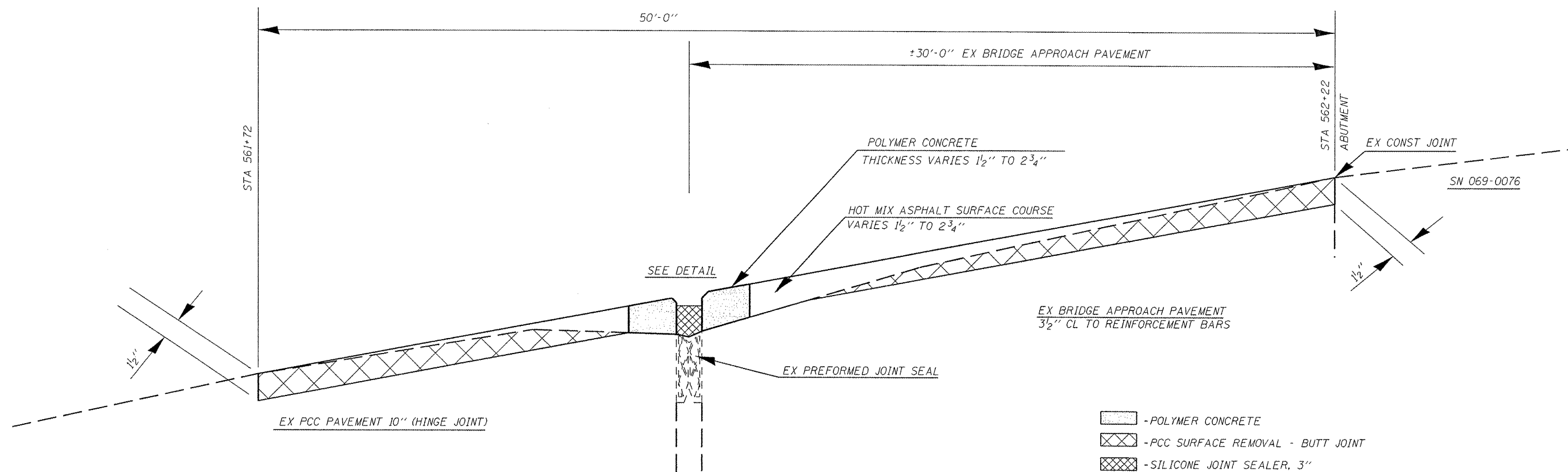


FILE NAME =	USER NAME = coxte	DESIGNED -	REVISED -
c:\pwork\puidot\coxte\d0288514\0672f18	Plan-sheet.dgn	DRAWN -	REVISED -
	PLOT SCALE = 40.0000' / in.	CHECKED -	REVISED -
	PLOT DATE = Dec-22-2011 01:30:37PM	DATE -	REVISED -

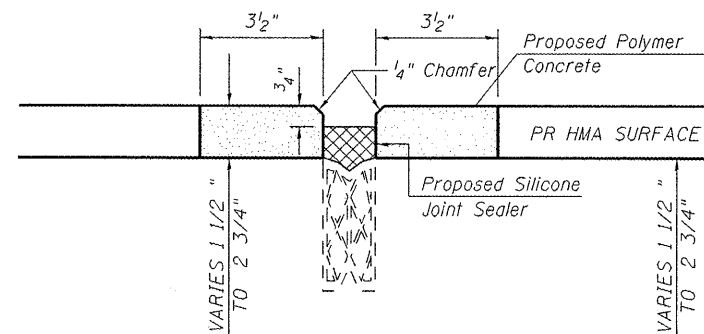
**STATE OF ILLINOIS  
DEPARTMENT OF TRANSPORTATION**

<b>PLAN SHEET</b>			
<b>FAP RTE 310 (US 67)</b>			
SCALE:	SHEET	OF	SHEETS
			STA. TO STA.

F.A.P. RTE.	SECTION	COUNTY	TOTAL SHEETS	SHEET NO.
310	(69-1) I-2	MORGAN	8	6
CONTRACT NO.			72F18	
ILLINOIS FED. AID PROJECT				



- POLYMER CONCRETE
- PCC SURFACE REMOVAL - BUTT JOINT
- SILICONE JOINT SEALER, 3"



**TYPICAL PROPOSED JOINT  
CROSS SECTION DETAIL**

**NOTES:**

1. DRIVING AND PASSING LANES SHALL BE RESURFACED BEFORE EXPANSION JOINT IS CONSTRUCTED.
2. HMA SURFACE COURSE SHALL BE SAW CUT AND REMOVED FOR INSTALLATION OF POLYMER CONCRETE.
3. HMA RESURFACING SHALL BE PLACED WITH THE PAVER USING A STRING LINE. THE PROFILE OF THE STRING LINE IS A STRAIGHT LINE BETWEEN STA 561+72 TO STA 562+22.
4. IF THE STRING LINE PROFILE INDICATES MORE THAN 2 3/4" OF HMA IS NEEDED, IT SHALL BE PLACED IN TWO LIFTS.
5. IF THE HMA SURFACE COURSE IS NOT PLACED THE SAME DAY AS THE PCC SURFACE COURSE - BUTT JOINT, TEMPORARY RAMP SHALL BE PLACED AT NO ADDITIONAL COST BUT INCLUDED IN THE ASSOCIATED PAY ITEMS.

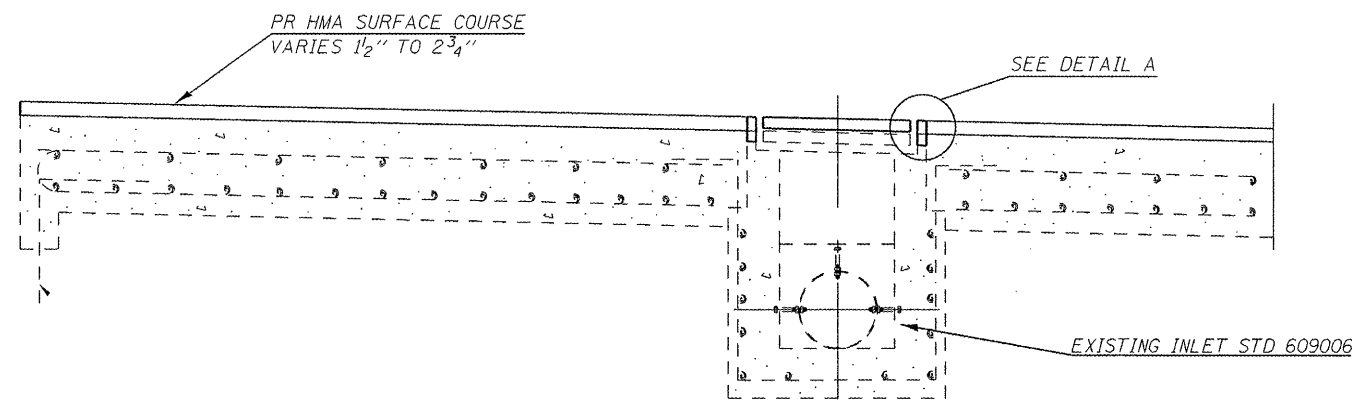
FILE NAME =	USER NAME = coxte	DESIGNED -	REVISED -
ct:\pwork\puidot\coxte\0288514\0672F1	shd-details.dgn	DRAWN -	REVISED -
	PLOT SCALE = 5,0000' / in.	CHECKED -	REVISED -
	PLOT DATE = Dec-22-2011 01:32:39PM	DATE -	REVISED -

**STATE OF ILLINOIS  
DEPARTMENT OF TRANSPORTATION**

**EXPANSION JOINT DETAIL  
FAP RTE 310 (US 67)**

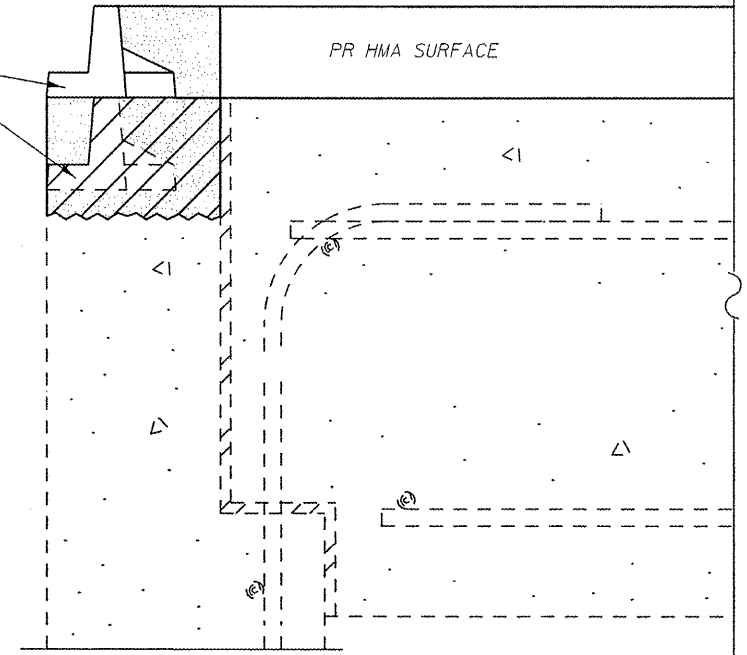
SCALE: SHEET OF SHEETS STA. TO STA.

F.A.P. RTE.	SECTION	COUNTY	TOTAL SHEETS	SHEET NO.
310	(69-1) 1-2	MORGAN	8	7
CONTRACT NO. 72F18			ILLINOIS FED. AID PROJECT	



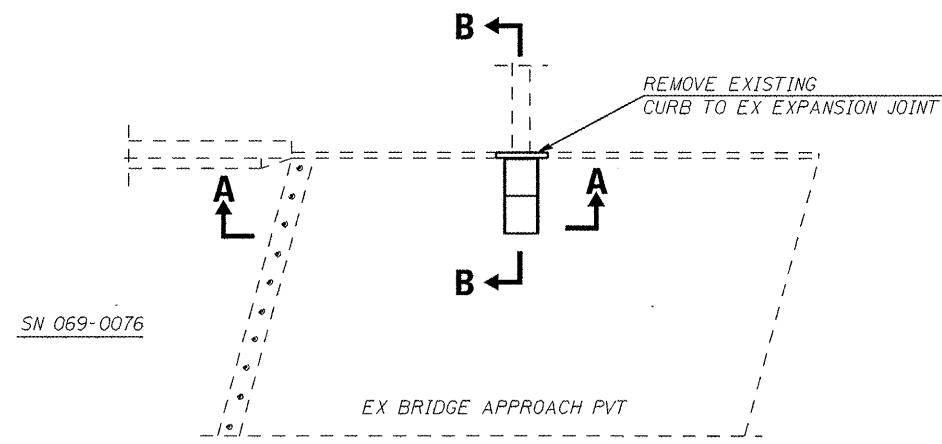
**SECTION A-A**

EXIST CASTING AND GRATE  
TO BE REMOVED AND REINSTALLED

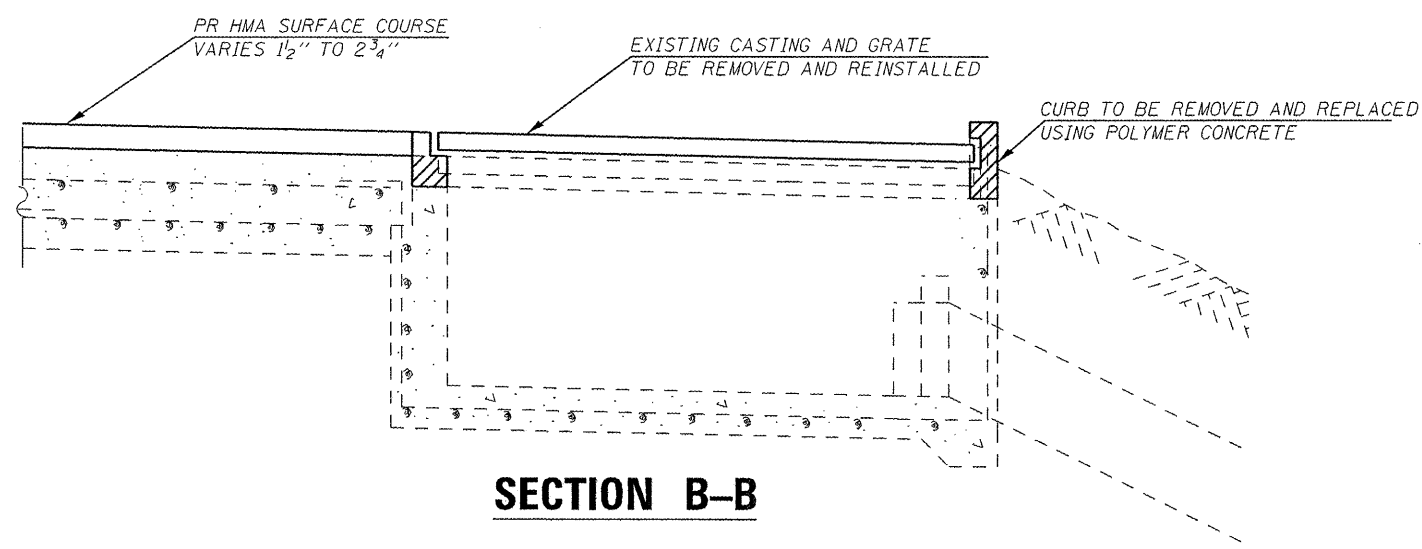


**DETAIL A**

- CONCRETE TO BE REMOVED
- POLYMER CONCRETE  
APPROX. 3.5 CU FT PER INLET



**TYPICAL DETAIL PLAN**



**SECTION B-B**

FILE NAME =	USER NAME = coxte	DESIGNED -	REVISED -
et:\pwork\puidot\coxte\0288514\0672F18\shd-details.dgn		DRAWN -	REVISED -
		CHECKED -	REVISED -
		DATE -	REVISED -

**STATE OF ILLINOIS  
DEPARTMENT OF TRANSPORTATION**

**INLET RECONSTRUCTION DETAIL  
FAP RTE 310 (US 67)**

F.A.P. RTE.	SECTION	COUNTY	TOTAL SHEETS	SHEET NO.
310	(69-1) I-2	MORGAN	8	8
CONTRACT NO.			72F18	
ILLINOIS FED. AID PROJECT				

SCALE: SHEET OF SHEETS STA. TO STA.