

**US ROUTE 50**

DESCRIPTION	COORDINATE	
	NORTHING	EASTING
POT STA 824+00.00	711654.52	559303.43
POT STA 833+85.00	711610.42	560287.44
POT STA 844+00.00	711564.99	561301.43

BENCHMARK \* 10

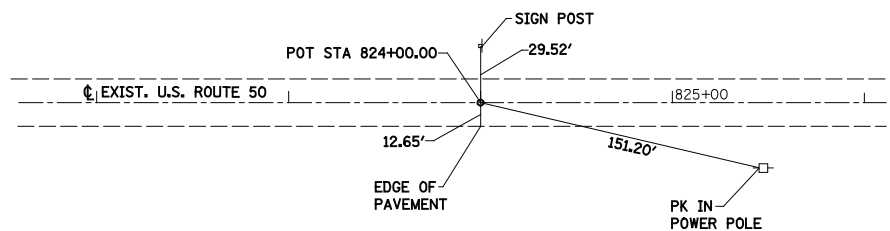
RAILROAD SPIKE IN POWER POLE AT SOUTHEAST CORNER OF US 50 AND CREEK ROAD  
ELEV 458.933

BENCHMARK \* 11

RAILROAD SPIKE IN POWER POLE AT SOUTH SIDE OF US 50, JUST EAST OF SN 014-0410.  
STA 835+23, 34' RT  
ELEV 461.081

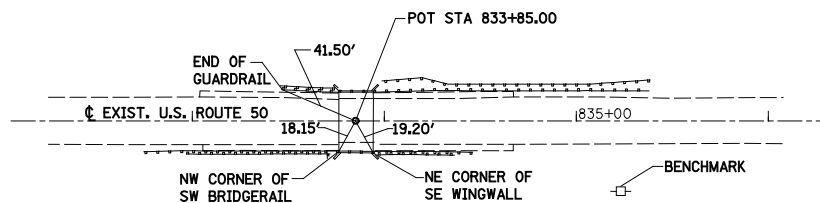
BENCHMARK \* 12

RAILROAD SPIKE IN LIGHT POLE AT SOUTHEAST CORNER OF US 50 AND FERRIN / BOULDER ROAD  
ELEV 464.116



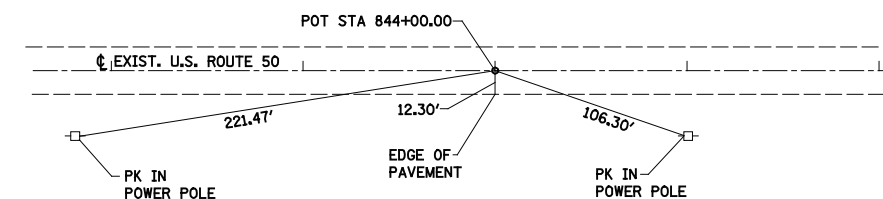
**POT STATION 824+00.00**

N 711654.5180  
E 559303.4310



**POT STATION 833+85.00**

SN 014-0410  
N 711610.4230  
E 560287.4440



**POT STATION 844+00.00**

N 711564.9860  
E 561301.4260

FILE NAME =	USER NAME = Paul	DESIGNED - JLS	REVISED -	<b>STATE OF ILLINOIS DEPARTMENT OF TRANSPORTATION</b>	<b>HORIZONTAL CONTROL &amp; TIE POINTS, US ROUTE 50</b>			F.A.P. RTE.	SECTION	COUNTY	TOTAL SHEETS	SHEET NO.
S:\Projects\40-0022-3HY US 50 Final Plans\dgn\CADD Sheets\0876843-ah1-ATB.dgn	DRAWN - PDB	REVISED -	REVISED -					327	20BR	CLINTON	51	10
PLOT SCALE = 200.0000' / IN.	CHECKED - BRM	REVISED -	REVISED -					<b>CONTRACT NO. 76B43</b>				
PLOT DATE = 11/17/2011	DATE - 02-08-11	REVISED -	REVISED -					FED. ROAD DIST. NO.	ILLINOIS FED. AID PROJECT			

SCALE: 1"=100' SHEET NO. 1 OF 2 SHEETS STA. TO STA.