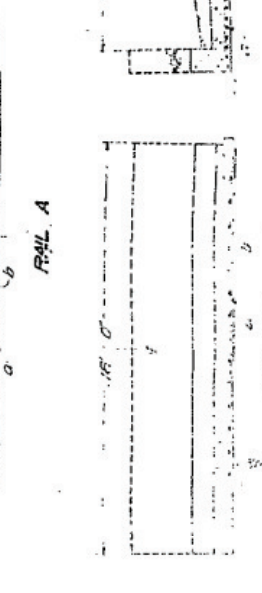
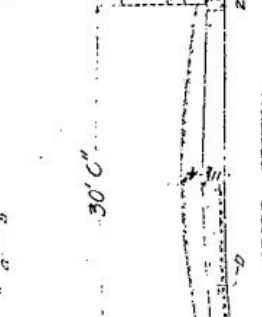
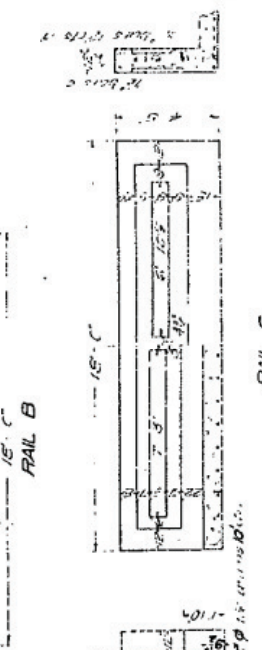
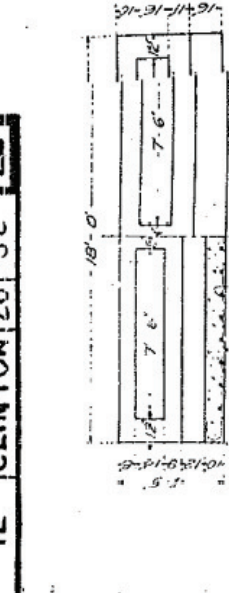
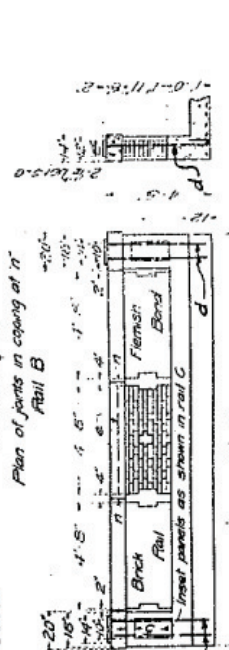


BOND ISSUE ROUTE NO.	COUNTY	SEC.	TOTAL SHEETS	SHEET NO.
12	CLINTON	20	32	26

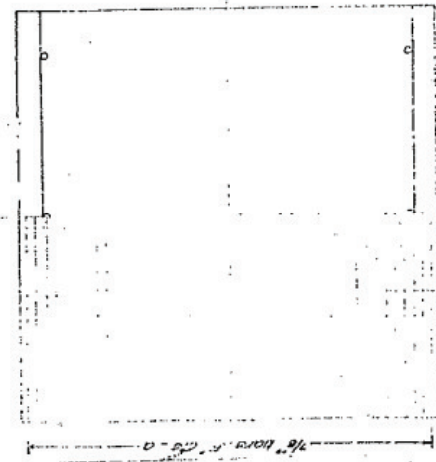
STATE OF ILLINOIS  
STATE HIGHWAY DEPARTMENT  
REINFORCED CONCRETE SLAB  
SPAN, SIXTEEN FEET.

SHEET NO. 1  
SHEETS



CROSS SECTION

ELEVATION



BILL OF MATERIAL

NO.	DESCRIPTION	QUANTITY	UNIT	EST. PRICE	TOTAL
1	RAIL A	1	CU YD	175.00	175.00
2	RAIL B	1	CU YD	175.00	175.00
3	RAIL C	1	CU YD	175.00	175.00
4	RAIL B .30 FOOT ROADWAY	1	CU YD	175.00	175.00
5	RAIL B .30 FOOT ROADWAY	1	CU YD	175.00	175.00
6	RAIL B .30 FOOT ROADWAY	1	CU YD	175.00	175.00
7	RAIL B .30 FOOT ROADWAY	1	CU YD	175.00	175.00
8	RAIL B .30 FOOT ROADWAY	1	CU YD	175.00	175.00
9	RAIL B .30 FOOT ROADWAY	1	CU YD	175.00	175.00
10	RAIL B .30 FOOT ROADWAY	1	CU YD	175.00	175.00
11	RAIL B .30 FOOT ROADWAY	1	CU YD	175.00	175.00
12	RAIL B .30 FOOT ROADWAY	1	CU YD	175.00	175.00
13	RAIL B .30 FOOT ROADWAY	1	CU YD	175.00	175.00
14	RAIL B .30 FOOT ROADWAY	1	CU YD	175.00	175.00
15	RAIL B .30 FOOT ROADWAY	1	CU YD	175.00	175.00
16	RAIL B .30 FOOT ROADWAY	1	CU YD	175.00	175.00
17	RAIL B .30 FOOT ROADWAY	1	CU YD	175.00	175.00
18	RAIL B .30 FOOT ROADWAY	1	CU YD	175.00	175.00
19	RAIL B .30 FOOT ROADWAY	1	CU YD	175.00	175.00
20	RAIL B .30 FOOT ROADWAY	1	CU YD	175.00	175.00
21	RAIL B .30 FOOT ROADWAY	1	CU YD	175.00	175.00
22	RAIL B .30 FOOT ROADWAY	1	CU YD	175.00	175.00
23	RAIL B .30 FOOT ROADWAY	1	CU YD	175.00	175.00
24	RAIL B .30 FOOT ROADWAY	1	CU YD	175.00	175.00
25	RAIL B .30 FOOT ROADWAY	1	CU YD	175.00	175.00
26	RAIL B .30 FOOT ROADWAY	1	CU YD	175.00	175.00
27	RAIL B .30 FOOT ROADWAY	1	CU YD	175.00	175.00
28	RAIL B .30 FOOT ROADWAY	1	CU YD	175.00	175.00
29	RAIL B .30 FOOT ROADWAY	1	CU YD	175.00	175.00
30	RAIL B .30 FOOT ROADWAY	1	CU YD	175.00	175.00
31	RAIL B .30 FOOT ROADWAY	1	CU YD	175.00	175.00
32	RAIL B .30 FOOT ROADWAY	1	CU YD	175.00	175.00
33	RAIL B .30 FOOT ROADWAY	1	CU YD	175.00	175.00
34	RAIL B .30 FOOT ROADWAY	1	CU YD	175.00	175.00
35	RAIL B .30 FOOT ROADWAY	1	CU YD	175.00	175.00
36	RAIL B .30 FOOT ROADWAY	1	CU YD	175.00	175.00
37	RAIL B .30 FOOT ROADWAY	1	CU YD	175.00	175.00
38	RAIL B .30 FOOT ROADWAY	1	CU YD	175.00	175.00
39	RAIL B .30 FOOT ROADWAY	1	CU YD	175.00	175.00
40	RAIL B .30 FOOT ROADWAY	1	CU YD	175.00	175.00
41	RAIL B .30 FOOT ROADWAY	1	CU YD	175.00	175.00
42	RAIL B .30 FOOT ROADWAY	1	CU YD	175.00	175.00
43	RAIL B .30 FOOT ROADWAY	1	CU YD	175.00	175.00
44	RAIL B .30 FOOT ROADWAY	1	CU YD	175.00	175.00
45	RAIL B .30 FOOT ROADWAY	1	CU YD	175.00	175.00
46	RAIL B .30 FOOT ROADWAY	1	CU YD	175.00	175.00
47	RAIL B .30 FOOT ROADWAY	1	CU YD	175.00	175.00
48	RAIL B .30 FOOT ROADWAY	1	CU YD	175.00	175.00
49	RAIL B .30 FOOT ROADWAY	1	CU YD	175.00	175.00
50	RAIL B .30 FOOT ROADWAY	1	CU YD	175.00	175.00

USE RAIL B .30 FOOT ROADWAY

Class A concrete to be used throughout  
Proportions: 1-3 1/2-4

STATION 833+85  
STATE BOND ISSUE~ROUTE 12  
SECTION 20~CLINTON CO.

PLAN

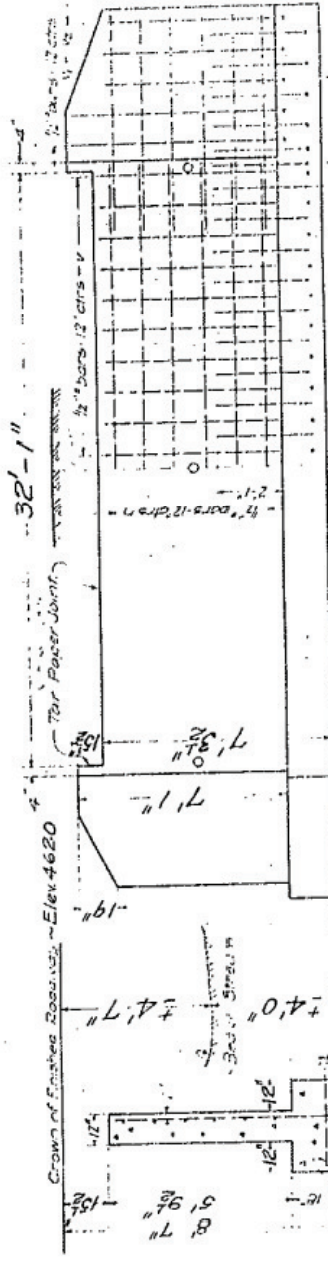
STATE OF ILLINOIS  
DEPARTMENT OF TRANSPORTATION  
PASSED BY THE BOARD OF SUPERVISORS  
CLINTON COUNTY  
ENGINEER OF DESIGN

STATE OF ILLINOIS  
DEPARTMENT OF TRANSPORTATION

B.M. - N. & W. in rear of 1st. Pole at right  
of station 832+10. Elev. 460.35

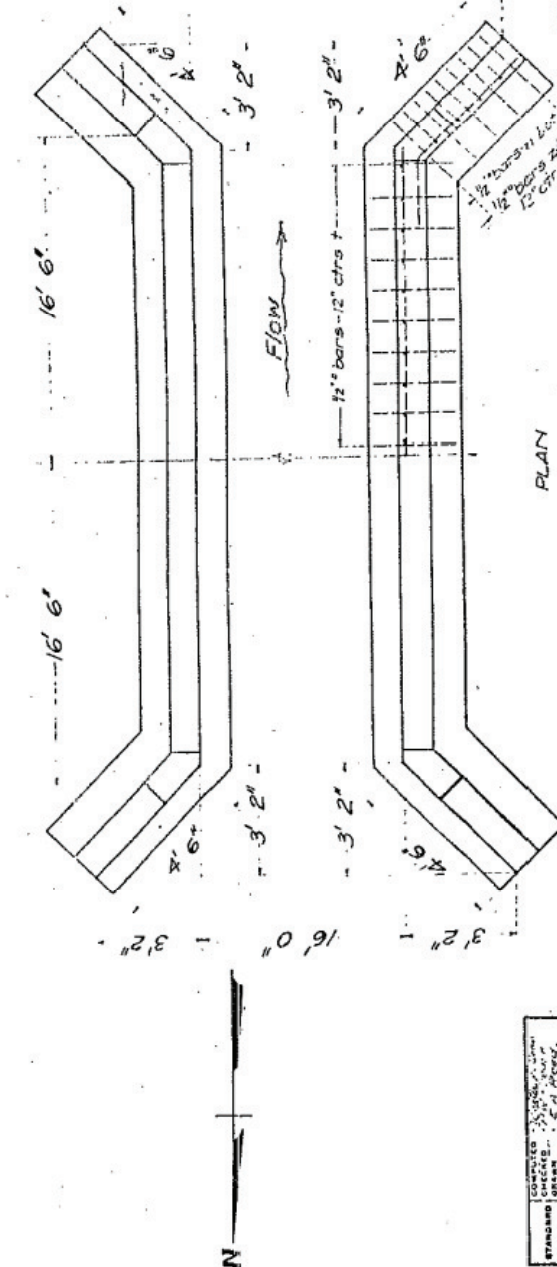
BOND ISSUE ROUTE NO.	COUNTY	SEC.	TOTAL SHEETS	SHEET NO.
12	CLINTON	20	32	26

Sheet No. 2  
2 sheets



SECTION OF ABUTMENT

SHOWING OUTLINES - FRONT ELEVATION - SHOWING REINFORCEMENT



STATE OF ILLINOIS  
DEPARTMENT OF TRANSPORTATION  
PASSED BY THE BOARD OF SUPERVISORS  
CLINTON COUNTY  
ENGINEER OF DESIGN

STATION 833+85  
STATE BOND ISSUE~ROUTE 12  
SECTION 20~CLINTON CO.

FILE NAME = S:\Projects\410-002-311 US 50 Final Plans\gdn\CADD Sheets\0816843-ah1-ex1st-structure.dgn  
USER NAME = Paul  
DESIGNED - ESW  
DRAWN - PDB  
PLOT SCALE = 48.0000' / IN.  
CHECKED - BRM  
PLOT DATE = 12/8/2011  
DATE - 11-9-11

REVISOR -  
REVISOR -  
REVISOR -  
REVISOR -

EXISTING STRUCTURE PLANS  
FOR INFORMATION ONLY  
SCALE: SHEET NO. 1 OF 3 SHEETS STA. TO STA.

F.A.P. RTE.	SECTION	COUNTY	TOTAL SHEETS	SHEET NO.
327	20BR	CLINTON	51	42
CONTRACT NO. 76843				
FED. ROAD DIST. NO. ILLINOIS FED. AID PROJECT				