

STATE OF ILLINOIS
 DEPARTMENT OF TRANSPORTATION
 DIVISION OF HIGHWAYS
**PROPOSED
 HIGHWAY PLANS**

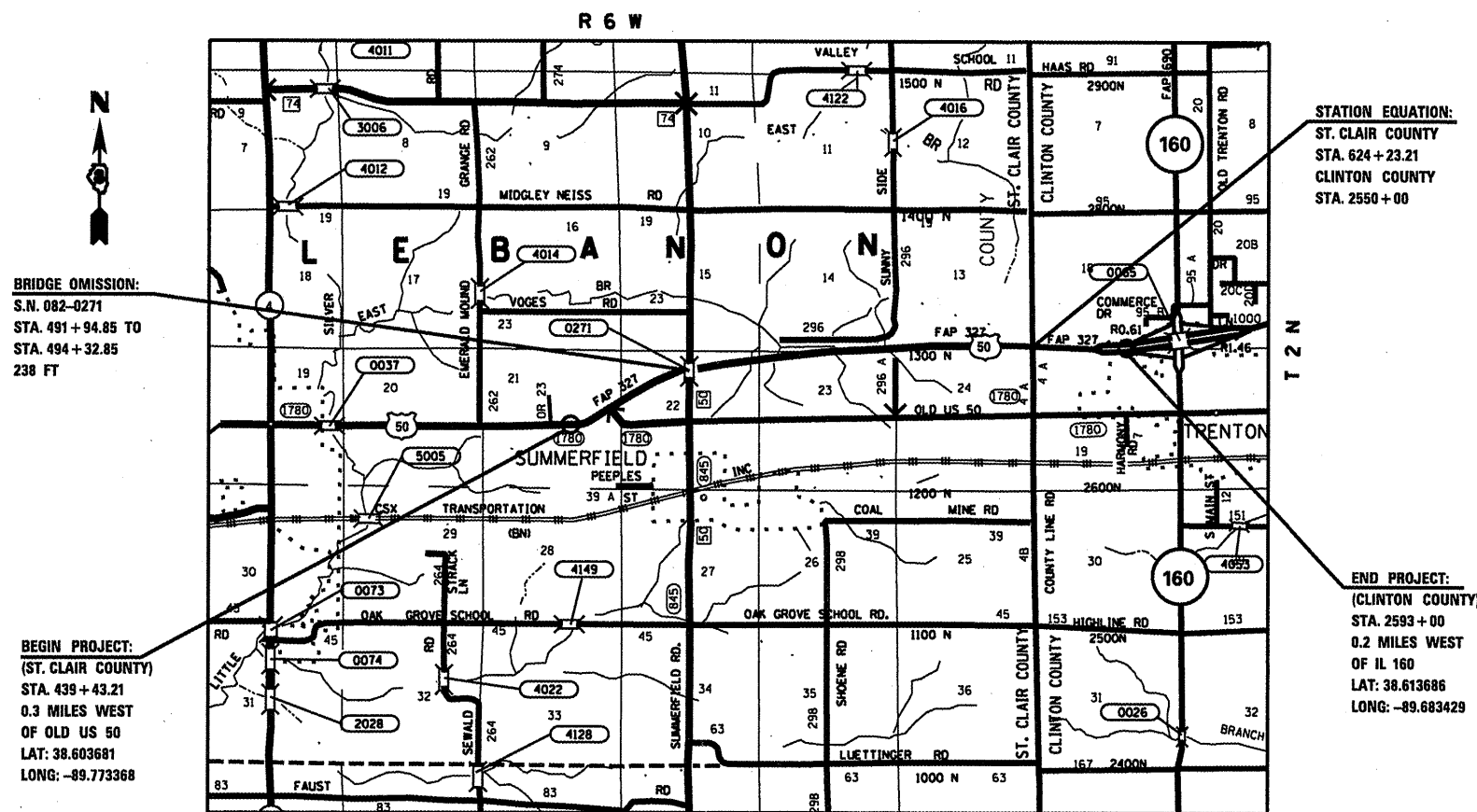
F.A.P. RTE.	SECTION	COUNTY	TOTAL SHEETS	SHEET NO.
327	(82-11,14-12)RS-1	ST. CLAIR / CLINTON	64	1
FED. ROAD DIST. NO.	ILLINOIS	CONTRACT NO. 76B81		

ST. CLAIR / CLINTON

FOR INDEX OF SHEETS, SEE SHEET NO. 2

FAP 327 (US 50)
 SECTION: (82-11,14-12)RS-1
 PROJECT ACNHF-0327(056)
 ST. CLAIR / CLINTON COUNTY
 RESURFACING

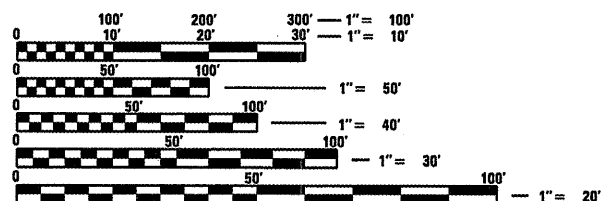
C-98-049-08



END PROJECT:
 (CLINTON COUNTY)
 STA. 2593 + 00
 0.2 MILES WEST
 OF IL 160
 LAT: 38.613686
 LONG: -89.683429

BRIDGE OMISSION:
 S.N. 082-0271
 STA. 491 + 94.85 TO
 STA. 494 + 32.85
 238 FT

BEGIN PROJECT:
 (ST. CLAIR COUNTY)
 STA. 439 + 43.21
 0.3 MILES WEST
 OF OLD US 50
 LAT: 38.603681
 LONG: -89.773368



FULL SIZE PLANS HAVE BEEN PREPARED USING STANDARD ENGINEERING SCALES. REDUCED SIZED PLANS WILL NOT CONFORM TO STANDARD SCALES. IN MAKING MEASUREMENTS ON REDUCED PLANS, THE ABOVE SCALES MAY BE USED.

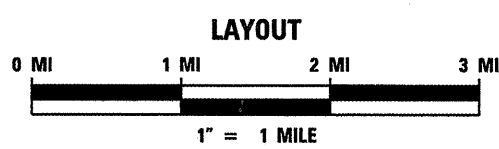
J.U.L.I.E.
 JOINT UTILITY LOCATION INFORMATION FOR EXCAVATION
 1-800-892-0123
 OR 811

PROJECT ENGINEER: PATTI LEBEAU (618) 346-3179
 PROJECT MANAGER: BILLIE OWEN (618) 346-3186

CONTRACT NO. 76B81

ADT

7700	(2007)
7900	(2009)
9600	(2029)
SU = 3.2%	
MU = 7.1%	



GROSS LENGTH: 22955.55 FT (4.35 MILES)
 NET LENGTH: 22717.55 FT (4.32 MILES)

FUNCTIONAL ROADWAY CLASSIFICATION:
 OTHER PRINCIPAL ARTERIAL

STATE OF ILLINOIS
 DEPARTMENT OF TRANSPORTATION
 DIVISION OF HIGHWAYS

SUBMITTED December 16, 2011

Don M. Owen
 DEPUTY DIRECTOR OF HIGHWAYS, REGION 5 ENGINEER

Feb 3, 2012
John D. Baramelli P.E.
 acting ENGINEER OF DESIGN AND ENVIRONMENT

Feb 3, 2012
William R. Fleyler
 acting DIRECTOR OF HIGHWAYS, CHIEF ENGINEER

**PRINTED BY THE AUTHORITY
 OF THE STATE OF ILLINOIS**