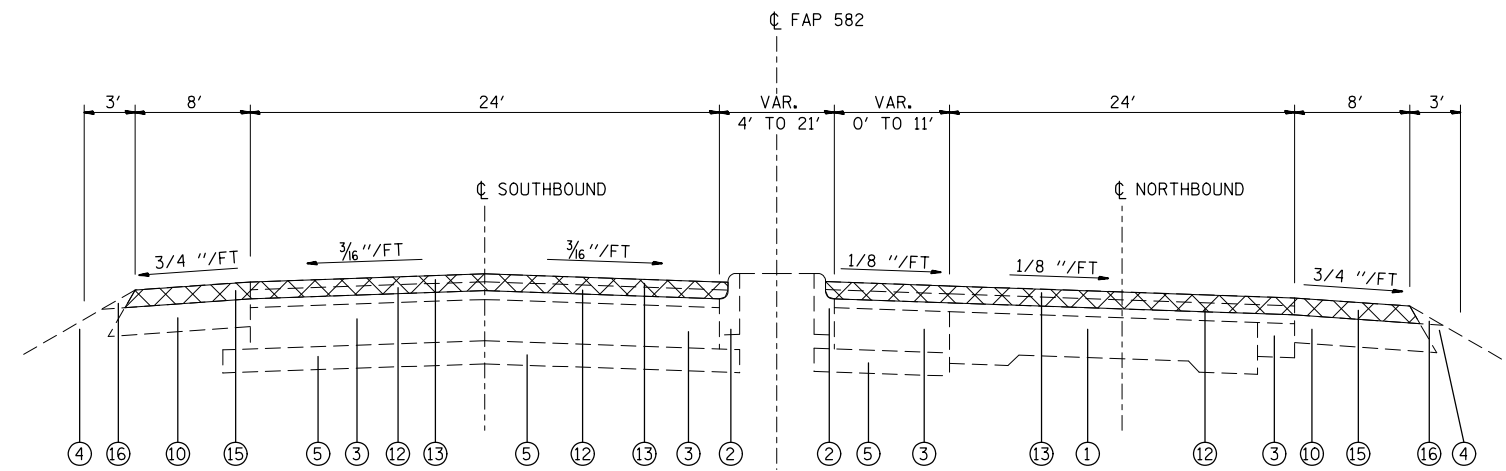
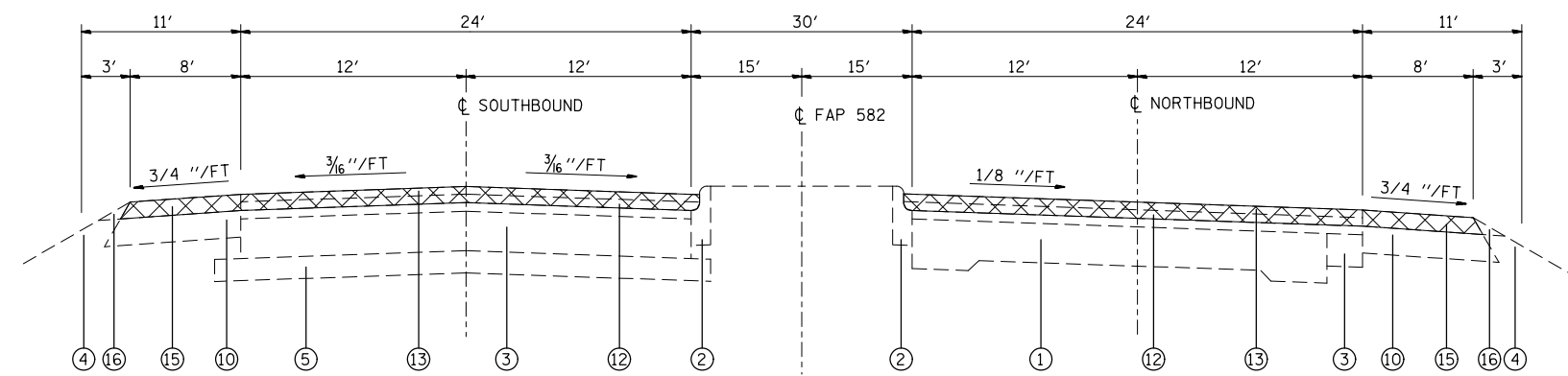


TYPICAL SECTION
STA. 95+40 TO STA. 96+00

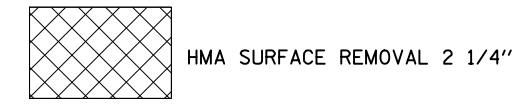


TYPICAL SECTION
STA. 96+00 TO STA. 100+42



TYPICAL SECTION
STA. 100+42 TO STA. 104+35

- LEGEND**
- ① EXISTING P.C.C. PAVEMENT 10"-8"-10"
 - ② EXISTING CURB & GUTTER, TYPE B-6.06
 - ③ EXISTING P.C.C. PAVEMENT CONCRETE BASE COURSE 9"
 - ④ EXISTING TURF SHOULDER
 - ⑤ EXISTING SUB-BASE GRANULAR MATERIAL 6"
 - ⑥ EXISTING CONCRETE MEDIAN SURFACE 4"
 - ⑦ EXISTING SHOULDERS (STABILIZED)
 - ⑧ EXISTING STANDARD REINFORCED JOINTED P.C.C. PAVEMENT 10"
 - ⑨ EXISTING CONCRETE CURB & GUTTER, TYPE B-9.24
 - ⑩ EXISTING HMA SHOULDERS (6" AND VARIES)
 - ⑪ EXISTING LEVELING BINDER (MM) MIX C, TYPE 2, 3/4", 1" AND VARIES
 - ⑫ EXISTING LEVELING BINDER (MM) MIX B, TYPE 2, 1 3/4" AND VARIES
 - ⑬ EXISTING HMA CONCRETE SURFACE COURSE, MIX D, CLASS I, TYPE 2, 1 1/2"
 - ⑭ EXISTING HMA CONCRETE PAVEMENT (FULL DEPTH), TYPE 2, 13 1/4"
 - ⑮ EXISTING HMA SHOULDERS (VARIES 1 1/2" TO 6 1/2")
 - ⑯ EXISTING AGGREGATE SHOULDERS, TYPE B



FILE NAME =	USER NAME = millerra	DESIGNED -	REVISED -
et:\pw\work\p\dot\millerra\20260814\26876e96-sht-plan.dgn		DRAWN -	REVISED -
	PLOT SCALE = 100.0000' / in.	CHECKED -	REVISED -
	PLOT DATE = 12/16/2011	DATE -	REVISED -

**STATE OF ILLINOIS
DEPARTMENT OF TRANSPORTATION**

EXISTING TYPICAL SECTIONS			
SCALE:	SHEET NO.	OF SHEETS	STA. TO STA.

F.A.P. RTE.	SECTION	COUNTY	TOTAL SHEETS	SHEET NO.
582	(6-3, 6-1)RS-3	MADISON	66	8
CONTRACT NO. 76E96				
FED. ROAD DIST. NO. ILLINOIS FED. AID PROJECT				