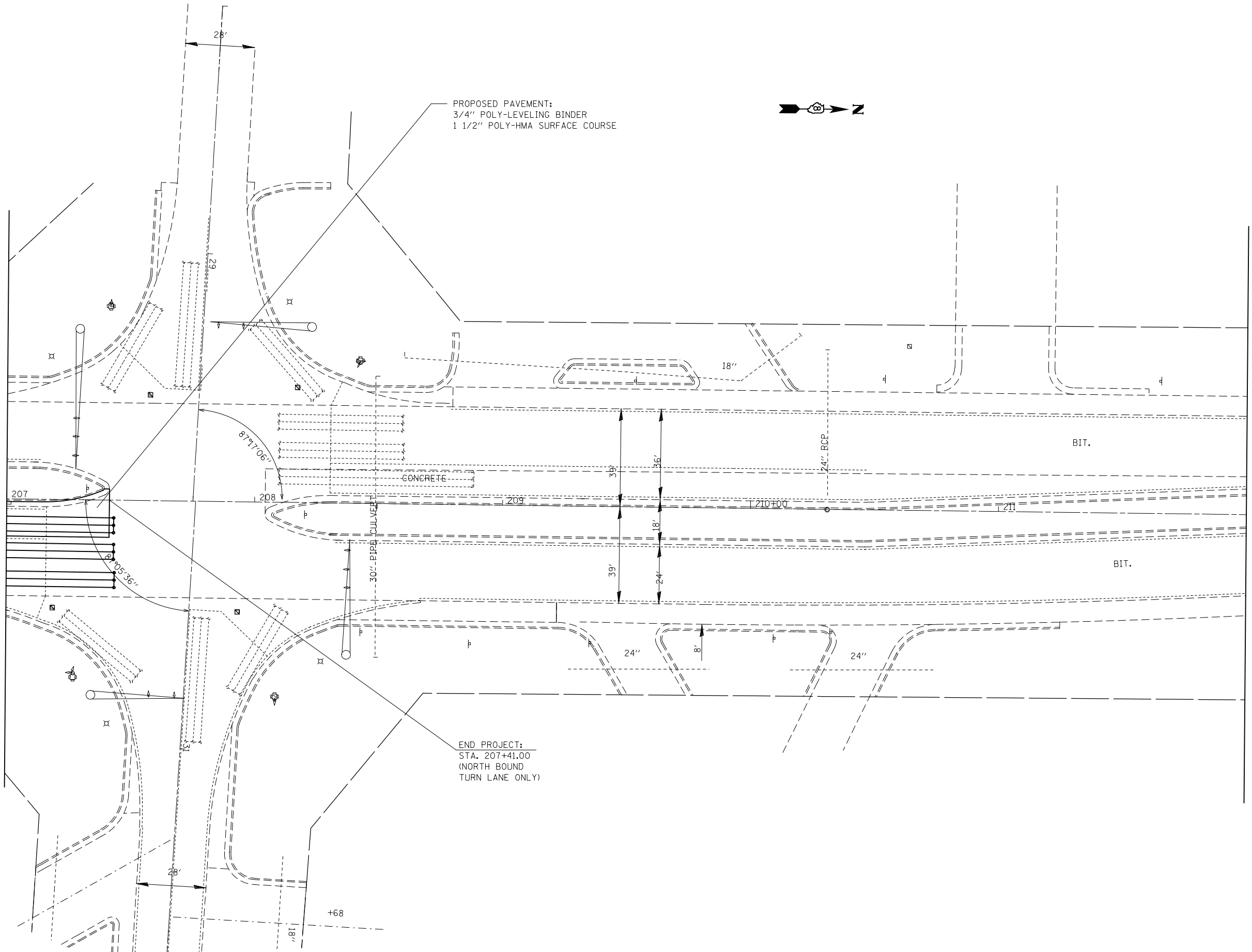


MATCHLINE STA. 207+00



PROPOSED PAVEMENT:
 3/4" POLY-LEVELING BINDER
 1 1/2" POLY-HMA SURFACE COURSE



END PROJECT:
 STA. 207+41.00
 (NORTH BOUND
 TURN LANE ONLY)



FILE NAME =	USER NAME = milleraj	DESIGNED -	REVISED -
et:\pw\work\p\dot\milleraj\2260814\2876e96-sht-plan.dgn		DRAWN -	REVISED -
	PLOT SCALE = 40.0000' / in.	CHECKED -	REVISED -
	PLOT DATE = 12/16/2011	DATE -	REVISED -

**STATE OF ILLINOIS
 DEPARTMENT OF TRANSPORTATION**

PLAN VIEW SHEETS

SCALE: 20 SHEET NO. 24 OF 24 SHEETS STA. 207+00 TO STA. 212+00

F.A.P. RTE.	SECTION	COUNTY	TOTAL SHEETS	SHEET NO.
582	(6-3,-6-1)RS-3	MADISON	66	37
CONTRACT NO. 76E96				
ILLINOIS FED. AID PROJECT				