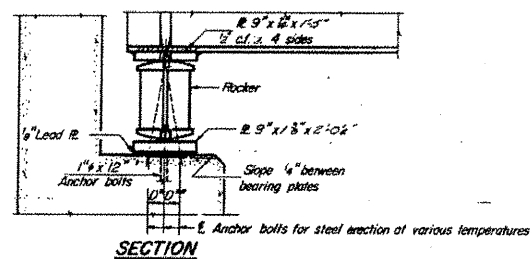
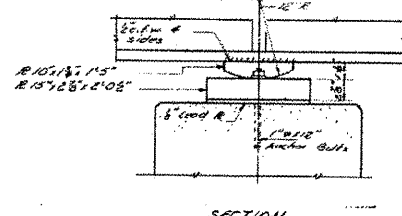


STATE OF ILLINOIS  
DEPARTMENT OF TRANSPORTATION

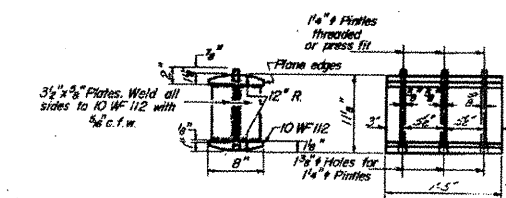
CLINTON 29 17  
SHEET NO. 9  
12 SHEETS



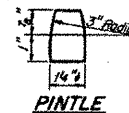
SECTION



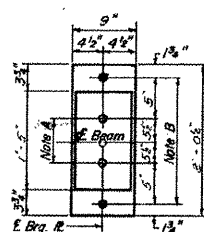
SECTION



ROCKER



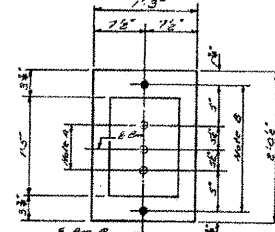
PINTLE



PLAN  
AT ABUTMENTS

NOTE B  
1 1/2" Holes for 1/4" anchor bolts  
2 1/2" x 1/4" x 1/4" B Washers  
under nut.

NOTE A  
1 1/2" Holes - 1" deep in top flange  
for purlins. Thread or press fit  
purlins into bottom flange.



PLAN  
AT PIER

Bearing seat surfaces shall be constructed or adjusted to the designated elevations within a tolerance of ± 1/8 inch. Adjustment shall be made either by grinding the surface or by shimming the bearing. Two 9" adjusting shims, of the dimensions of the bottom bearing plate, shall be provided for each bearing in addition to all other plates or shims.

NOTES ON SETTING OF ANCHOR BOLTS AT EXP. BRGS.

- a) D\* (Side of brg. away from fixed brg.)  
D\*\* 1/4" per each 100' of expansion for every 15° fall below the normal temp. of 50°F.  
D\*\* 1/4" per each 100' of expansion for every 15° rise above the normal temp. of 50°F.
- b) After beams have been erected and dimensions D\* or D\*\* determined, holes shall be drilled and anchor bolts shall be grouted in place. All fixed anchor bolts may be built into the masonry.

TABLE OF MOMENTS & REACTIONS - INT. GIRDERS				
D.L.	Moments		Reactions	
	Span 1	Pier	Abut.	Pier
Steel Section	919	2301	54.7	134.7
Composite Sect.	300			
S.D.C.	1000	890	38.7	64.6
Live	221	709	23.3	74.3
Total	2269	3790	121.7	273.6

Maximum L.L. Imp. Shear Range = 62.5"  
Moments are in Ft.-Kips  
Reactions are in Kips

Properties	
Steel Section	919
I <sub>x</sub>	26728 in <sup>4</sup>
S <sub>x</sub>	832 in <sup>3</sup>
S <sub>xy</sub>	1128 in <sup>3</sup>
Composite Section	
I <sub>x</sub>	26079 in <sup>4</sup>
S <sub>x</sub>	5280 in <sup>3</sup>
S <sub>xy</sub>	7330 in <sup>3</sup>

DESIGNED: *Conrad Rice*  
CHECKED: *Joseph L. Smith*  
DRAWN: *P.G. Barnett*  
DATE: 9-1-65

BEARING DETAILS  
FA. RT. 409 SEC. 14-N-115  
CLINTON COUNTY  
STA. 3003+26.77

LOCATION 1  
SN 014-0054  
NO SCALE

FILE NAME *	USER NAME * challandeska	DESIGNED -	REVISED -	STATE OF ILLINOIS DEPARTMENT OF TRANSPORTATION	EXISTING STRUCTURE PLANS - SN 014-0054	F.A.P. RTE.	SECTION	COUNTY	TOTAL SHEETS	SHEET NO.	
ca:\pe_work\pawdot\challandeska\08287812	0875F43-sht-exst-1.dgn	DRAWN -	REVISED -			327/690	14-14HB-P, 14-12BR-P	CLINTON	12	8	
PLOT SCALE * 100.0000' / 1"		CHECKED -	REVISED -			CONTRACT NO. 76F43					
PLOT DATE * 12/28/2011		DATE -	REVISED -			SCALE: NONE	SHEET NO. OF SHEETS	STA. TO STA.	FED. ROAD DIST. NO.	ILLINOIS FED. AID PROJECT	