

SCHEDULE OF QUANTITIES

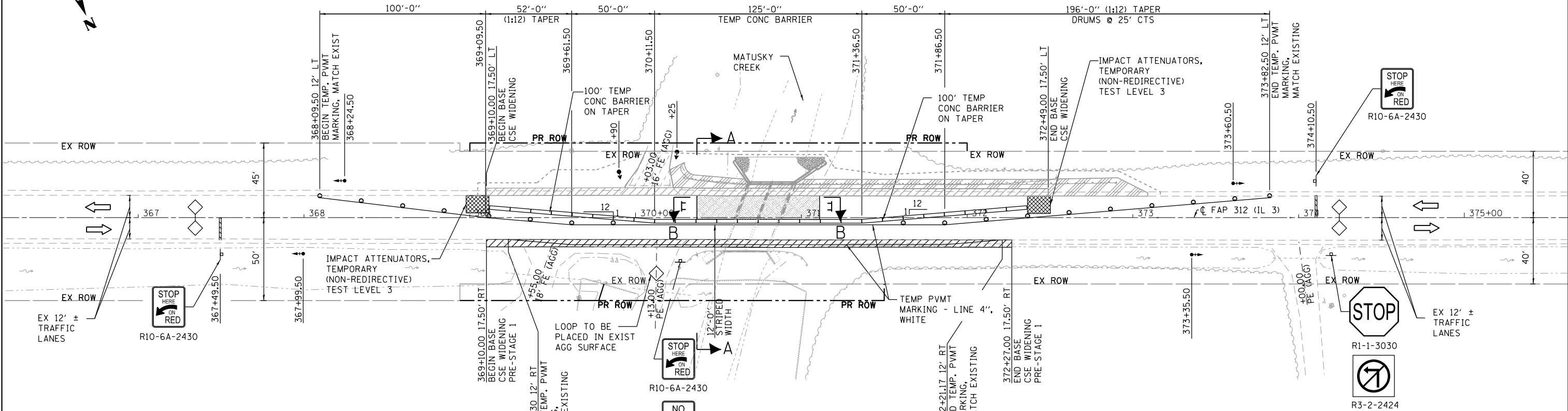
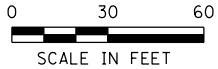
TEMPORARY CONCRETE BARRIER		
STATION TO	STATION	FEET
369+11.50	372+36.50	325.0'
TOTAL		325.0'
TEMPORARY BRIDGE TRAFFIC SIGNALS - 1 EACH		
IMPACT ATTENUATORS, TEMPORARY (NON-REDIRECTIVE), TEST LEVEL 3 - 2 EACH		

LEGEND

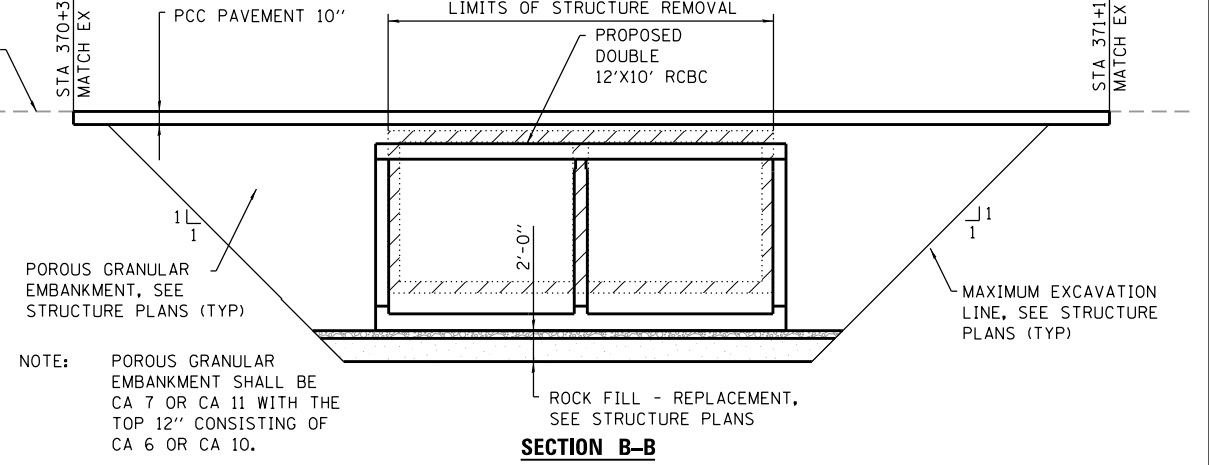
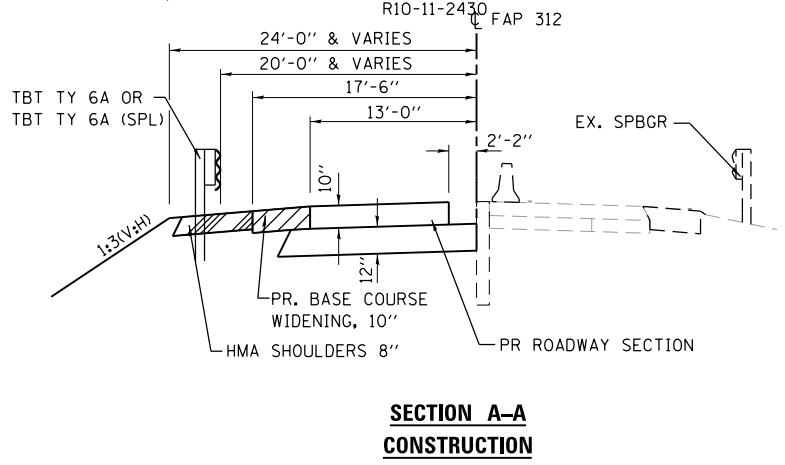
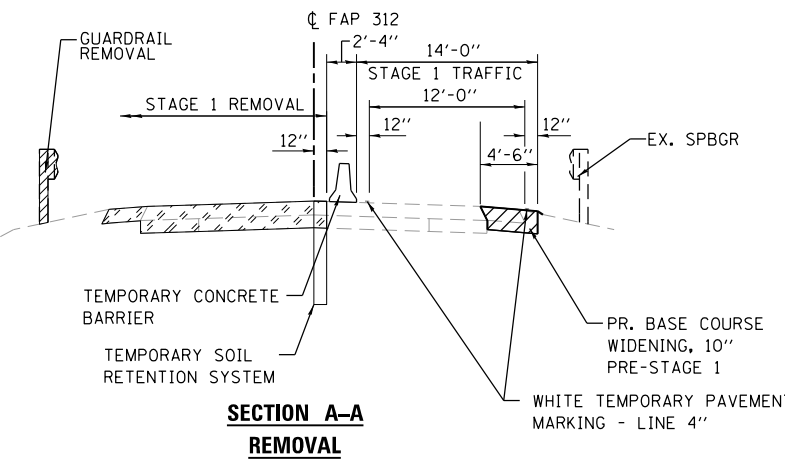
- ◇ DETECTOR LOOP
- ➔ TRAFFIC SIGNAL WITH BACKPLATE, SIGNAL DIRECTION INDICATED
- DRUM WITH STEADY BURNING BI-DIRECTIONAL LIGHT
- ▨ PAVEMENT REMOVAL
- ▨ BASE COURSE WIDENING, 10"
- ▨ HMA SHOULDERS, 8"
- ▨ AGGREGATE SURFACE COURSE, TYPE A
- ⌚ TYPE III BARRICADE
- ➔ TRAFFIC SIGNAL, SIGNAL DIRECTION INDICATED. (10' MINIMUM TO BOTTOM OF SIGNAL)

GENERAL NOTES

- TRAFFIC CONTROL SHALL BE ERECTED AS SHOWN AND ACCORDING TO "TRAFFIC CONTROL AND PROTECTION, STANDARD 701321."
- SEE SPECIAL PROVISIONS FOR ADDITIONAL TRAFFIC CONTROL REQUIREMENTS.
- COORDINATE LOCATION OF SIGNALS WITH FINAL WORK AS DIRECTED BY THE ENGINEER.
- ADDITIONAL SIGNAGE FOR ENTRANCES AND ADVANCE WIDTH RESTRICTION WARNING SHALL BE INCLUDED IN THE COST OF STANDARD 701321.
- THE DIMENSION SHOWN ON THE WIDTH RESTRICTION SIGN (W12-I102(O)-48) SHOWN ON STANDARD 701321 AND ON THE ADVANCE WARNING SIGN (W12-I103) SHOWN ON THE STAGE 2 PLAN SHEET FOR THIS STRUCTURE SHALL BE 12'-6" FOR STAGE 1 CONSTRUCTION.
- SEE STD 701321 FOR COMPLETION OF STAGE CONSTRUCTION SIGNING AND ADVANCE DETECTOR LOOP PLACEMENT NOT SHOWN.
- THE ADVANCE DETECTOR LOOPS ARE TYPICALLY LOCATED 275 FEET IN ADVANCE OF THE STOP BAR. THE BUREAU OF OPERATIONS SHOULD APPROVE THE LOOP LOCATIONS PRIOR TO INSTALLATION.
- THE CENTERLINE PAVEMENT MARKING SHOULD BE REMOVED FROM THE STOP BAR TO THE SAND ATTENUATORS OR DRUMS. EDGE LINE PAVEMENT MARKING SHOULD BE REMOVED IF A 10 FOOT LANE WIDTH CANNOT BE MAINTAINED. TEMPORARY EDGE LINES SHOULD BE INSTALLED WHEN THE EDGE LINES ARE REMOVED.
- VERTICAL PANELS SHOWN ON STANDARD 701321 WILL NOT BE REQUIRED ON THE STAGE 2 NEW BRIDGE RAIL. THE BARRIER WALL REFLECTORS SHALL BE INSTALLED PRIOR TO OPENING TO TRAFFIC.
- ANY TIME THE CONCRETE BARRIER IS NOT IN THE PROPER POSITION, FLAGGERS SHALL BE IN PLACE TO CONTROL TRAFFIC AND THE TEMPORARY TRAFFIC SIGNALS BE TURNED OFF OR COVERED.
- ALL TRAFFIC SIGNALS SHOWN ARE INCLUDED IN TEMPORARY BRIDGE TRAFFIC SIGNALS - 1 EACH.
- THE ADDITIONAL DETECTOR LOOPS AT THE ENTRANCE ARE INCLUDED IN TEMPORARY BRIDGE TRAFFIC SIGNALS - 1 EACH.
- TEMPORARY BRIDGE TRAFFIC SIGNALS SHALL BE A 3-PHASE SIGNAL WITH ACTUATION FOR THE PRIVATE ENTRANCE AT STATION 370+13.



STAGE 1 PLAN



FILE NAME : S:\Projects\2009\J085\09-22 ESCA\PTB 151 51 Phase 1\11 D9\Work Order\8\CA00\CA00 Sheets\SN 039-2029\0978197.sht-staging.dgn
MODEL : Default
PLOT DRIVER : V8i,PDF,11x17,pltf



USER NAME : mmann	DESIGNED - MCV	REVISED -
PLOT SCALE : 60.0000' / in.	DRAWN - CMM	REVISED -
PLOT DATE : 12/6/2011	CHECKED - MTM	REVISED -
	DATE - 11/10/11	REVISED -

STATE OF ILLINOIS
DEPARTMENT OF TRANSPORTATION

STAGE 1 CONSTRUCTION PLAN AND DETAILS
STRUCTURE NO. 039-2029

SCALE: 1"=30' SHEET NO. 1 OF 2 SHEETS STA. 367+00 TO STA. 375+00

F.A.P. RTE.	SECTION	COUNTY	TOTAL SHEETS	SHEET NO.
312	123B-4	JACKSON	58	10
CONTRACT NO. 78197				
ILLINOIS FED. AID PROJECT				