

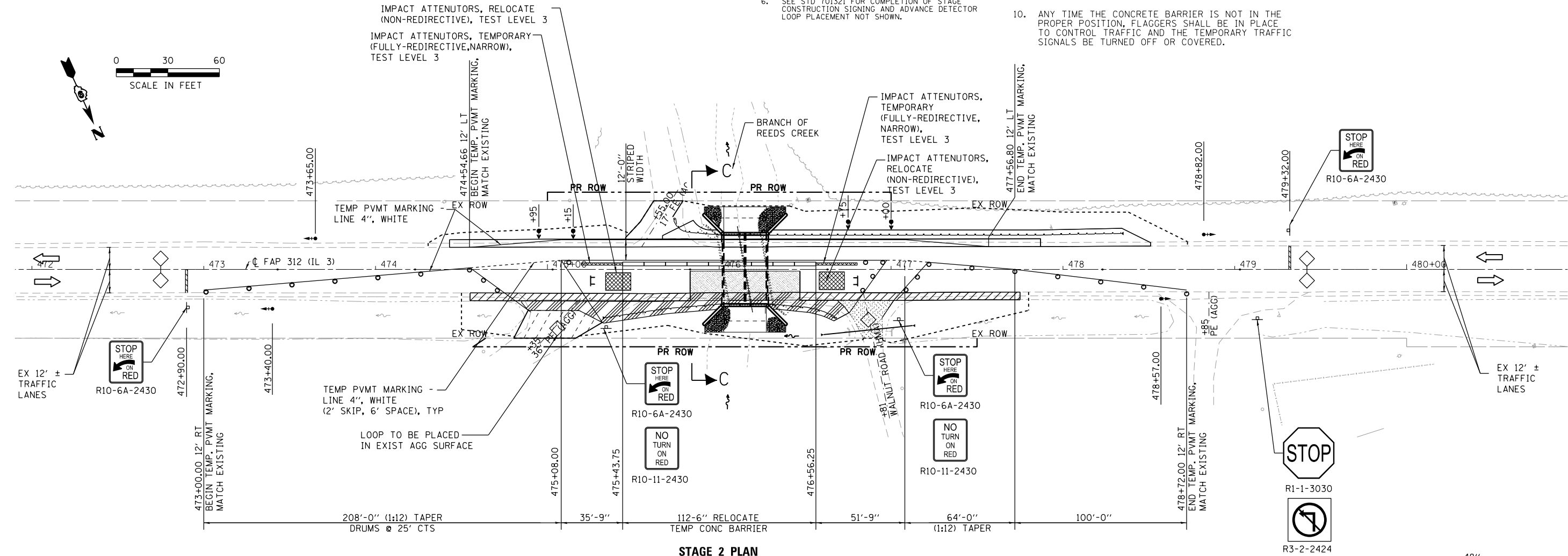
SCHEDULE OF QUANTITIES

RELOCATE TEMPORARY CONCRETE BARRIER			
STATION	TO	STATION	FEET
475+43.75		476+56.25	112.5'
TOTAL			- 112.5'
IMPACT ATTENUATORS, RELOCATE (NON-REDIRECTIVE), TEST LEVEL 3			
			- 2 EACH
IMPACT ATTENUATORS, TEMPORARY (FULLY-REDIRECTIVE, NARROW), TEST LEVEL 3			
			- 2 EACH

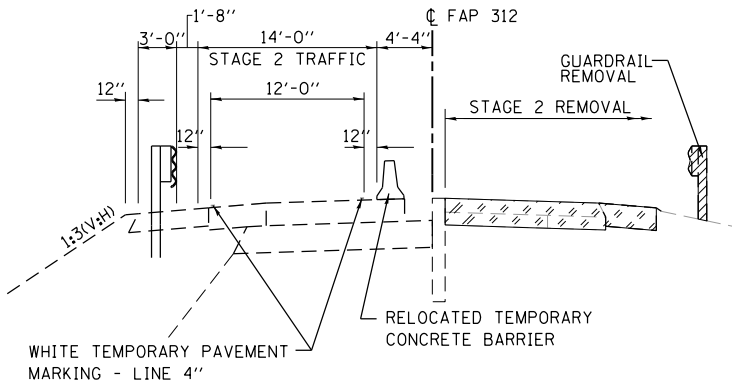
- LEGEND**
- ◇ DETECTOR LOOP
 - ➔ TRAFFIC SIGNAL WITH BACKPLATE, SIGNAL DIRECTION INDICATED
 - DRUM WITH STEADY BURNING BI-DIRECTIONAL LIGHT
 - ▨ PAVEMENT REMOVAL
 - ▨ BASE COURSE WIDENING, 10"
 - ▨ HMA SHOULDER, 8"
 - ▨ AGGREGATE SURFACE COURSE, TYPE A
 - ▨ INCIDENTAL HMA SURFACING
 - ⊥ TYPE III BARRICADE
 - ➔ TRAFFIC SIGNAL, SIGNAL DIRECTION INDICATED (10' MINIMUM TO BOTTOM OF SIGNAL)

GENERAL NOTES

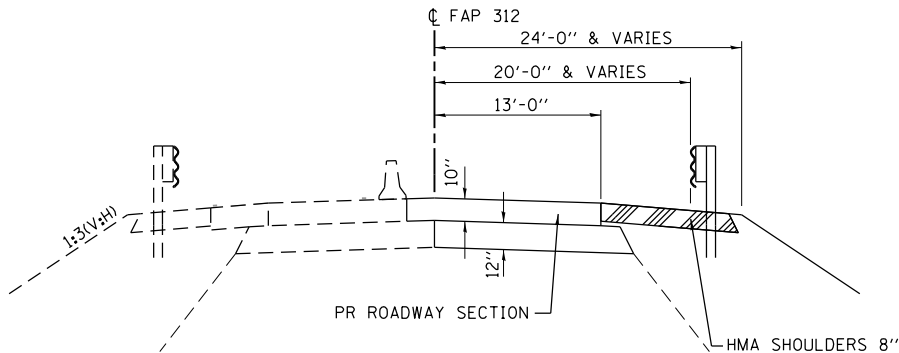
- TRAFFIC CONTROL SHALL BE ERCTED AS SHOWN AND ACCORDING TO "TRAFFIC CONTROL AND PROTECTION, STANDARD 701321."
- SEE SPECIAL PROVISIONS FOR ADDITIONAL TRAFFIC CONTROL REQUIREMENTS.
- COORDINATE LOCATION OF SIGNALS WITH FINAL WORK AS DIRECTED BY THE ENGINEER.
- ADDITIONAL SIGNAGE FOR ENTRANCES AND ADVANCE WIDTH RESTRICTION WARNING SHALL BE INCLUDED IN THE COST OF STANDARD 701321.
- THE DIMENSION SHOWN ON THE WIDTH RESTRICTION SIGN (W12-1102(0)-48) SHOWN ON STANDARD 701321 AND ON THE ADVANCE WARNING SIGN (W12-1103) SHOWN ON THIS SHEET SHALL BE 12'-6" FOR STAGE 2 CONSTRUCTION.
- SEE STD 701321 FOR COMPLETION OF STAGE CONSTRUCTION SIGNING AND ADVANCE DETECTOR LOOP PLACEMENT NOT SHOWN.
- THE ADVANCE DETECTOR LOOPS ARE TYPICALLY LOCATED 275 FEET IN ADVANCE OF THE STOP BAR. THE BUREAU OF OPERATIONS SHOULD APPROVE THE LOOP LOCATIONS PRIOR TO INSTALLATION.
- THE CENTERLINE PAVEMENT MARKING SHOULD BE REMOVED FROM THE STOP BAR TO THE SAND ATTENUATORS OR DRUMS. EDGE LINE PAVEMENT MARKING SHOULD BE REMOVED IF A 10 FOOT LANE WIDTH CANNOT BE MAINTAINED. TEMPORARY EDGE LINES SHOULD BE INSTALLED WHEN THE EDGE LINES ARE REMOVED.
- VERTICAL PANELS SHOWN ON STANDARD 701321 WILL NOT BE REQUIRED ON THE STAGE 2 NEW BRIDGE RAIL. THE BARRIER WALL REFLECTORS SHALL BE INSTALLED PRIOR TO OPENING TO TRAFFIC.
- ANY TIME THE CONCRETE BARRIER IS NOT IN THE PROPER POSITION, FLAGGERS SHALL BE IN PLACE TO CONTROL TRAFFIC AND THE TEMPORARY TRAFFIC SIGNALS BE TURNED OFF OR COVERED.
- RELOCATE STAGE 1 TRAFFIC SIGNALS FROM STATIONS 475+15 AND 475+40 TO STATIONS 474+75 AND 475+00 AND FROM STATION 476+75 TO STATION 474+15.
- ALL TRAFFIC SIGNALS SHOWN ARE INCLUDED IN TEMPORARY BRIDGE TRAFFIC SIGNALS - 1 EACH.
- THE ADDITIONAL DETECTOR LOOPS AT THE ENTRANCE AND SIDE ROAD ARE INCLUDED IN TEMPORARY BRIDGE TRAFFIC SIGNALS - 1 EACH.
- TEMPORARY BRIDGE TRAFFIC SIGNALS SHALL BE A 4-PHASE SIGNAL WITH ACTUATION PROVIDED FOR THE PRIVATE ENTRANCE AT STATION 475+35 AND THE SIDE ROAD (WALNUT RD.) AT STATION 476+81.



STAGE 2 PLAN



SECTION C-C
REMOVAL

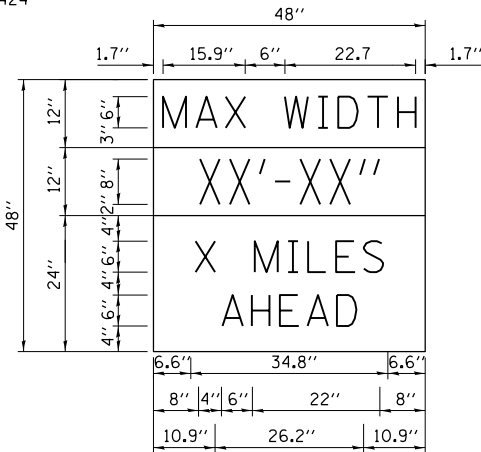


SECTION C-C
CONSTRUCTION

NOTE: THIS SIGN SHALL BE LOCATED AS DIRECTED BY THE ENGINEER. ONE SIGN SHALL BE PROVIDED FOR EACH APPROACH TO THE SITE.

W12-1103

W12-1103 (WIDTH IS 8D); NO BORDER, BLOCK ON WHITE; "MAX WIDTH" D; NO BORDER, BLACK ON ORANGE; "XX'-XX'" D; NO BORDER, BLACK ON WHITE; "X MILES" D; "AHEAD" D



USER NAME : mmann	DESIGNED - MCV	REVISED -
PLOT SCALE : 60.0000' / in.	DRAWN - CMM	REVISED -
PLOT DATE : 12/6/2011	CHECKED - MTM	REVISED -
	DATE - 11/10/11	REVISED -

F.A.P. RTE.	SECTION	COUNTY	TOTAL SHEETS	SHEET NO.
312	123B-3	JACKSON	58	13
CONTRACT NO. 78197				
ILLINOIS FED. AID PROJECT				