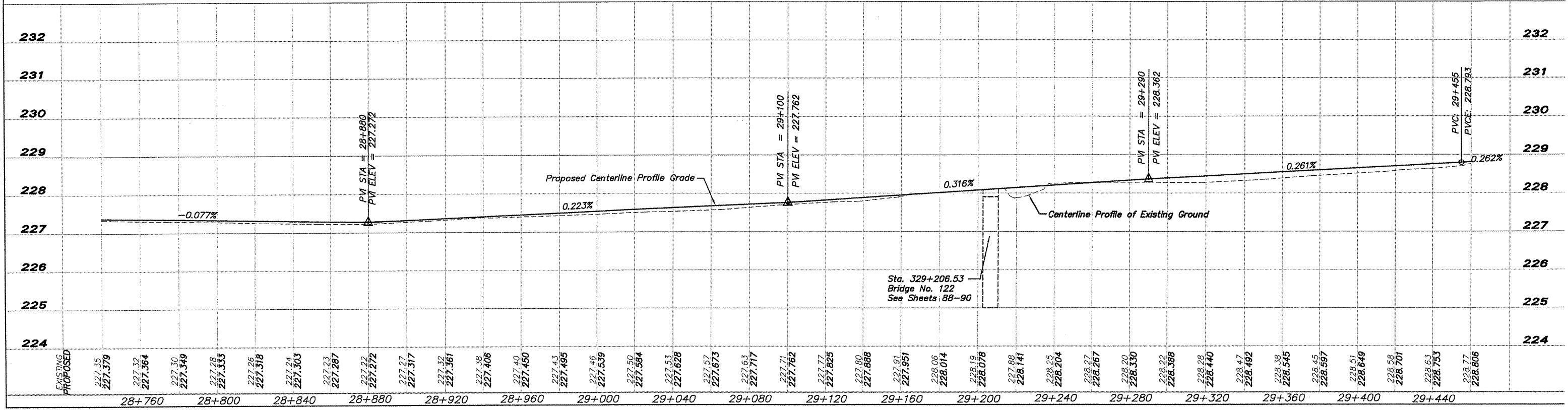


- EROSION CONTROL**
- - INLET PROTECTION
  - ⌋ - CULVERT INFLUENT PROTECTION
  - - - - DITCH CHECK
  - - SILT FENCE

NOTE:  
SEE SHEET 106 FOR DETAIL OF  
ALIGNMENT AT POWER POLE



EXISTING	PROPOSED
227.35	227.35
227.379	227.379
227.32	227.364
227.30	227.349
227.28	227.333
227.26	227.318
227.24	227.303
227.23	227.287
227.22	227.272
227.21	227.257
227.20	227.242
227.19	227.227
227.18	227.212
227.17	227.197
227.16	227.182
227.15	227.167
227.14	227.152
227.13	227.137
227.12	227.122
227.11	227.107
227.10	227.092
227.09	227.077
227.08	227.062
227.07	227.047
227.06	227.032
227.05	227.017
227.04	227.002
227.03	226.987
227.02	226.972
227.01	226.957
227.00	226.942
226.99	226.927
226.98	226.912
226.97	226.897
226.96	226.882
226.95	226.867
226.94	226.852
226.93	226.837
226.92	226.822
226.91	226.807
226.90	226.792
226.89	226.777
226.88	226.762

SHEET REVIEW	
AGENCY	DATE

REVISIONS		
NO.	ITEM	DATE

SCALE: Hor. = 1:1000 Ver. = 1:50
DRAWN BY: REK
CHECKED BY: JWH
DATE: DECEMBER 12, 2011

**McClure**  
Engineering Associates, Inc.  
7282 Argus Drive  
Rockford, Illinois 61107-5837  
(815) 398-2332 FAX (815) 398-2482  
Design Firm License: Illinois 184-000816  
Copyright 2011 By McClure Engineering Associates, Inc.

**PLAN & PROFILE 28+740 TO 29+460**  
PECATONICA PRAIRIE PATH  
WINNEBAGO COUNTY HIGHWAY DEPARTMENT SECTION 94-00267-00-BT  
FILE: H:\10-042 WINN CO PEC PATH\DESIGN\DRAWINGS\10-042 PP28+740 TO 29+460.DWG JOB: 04-30-10-042