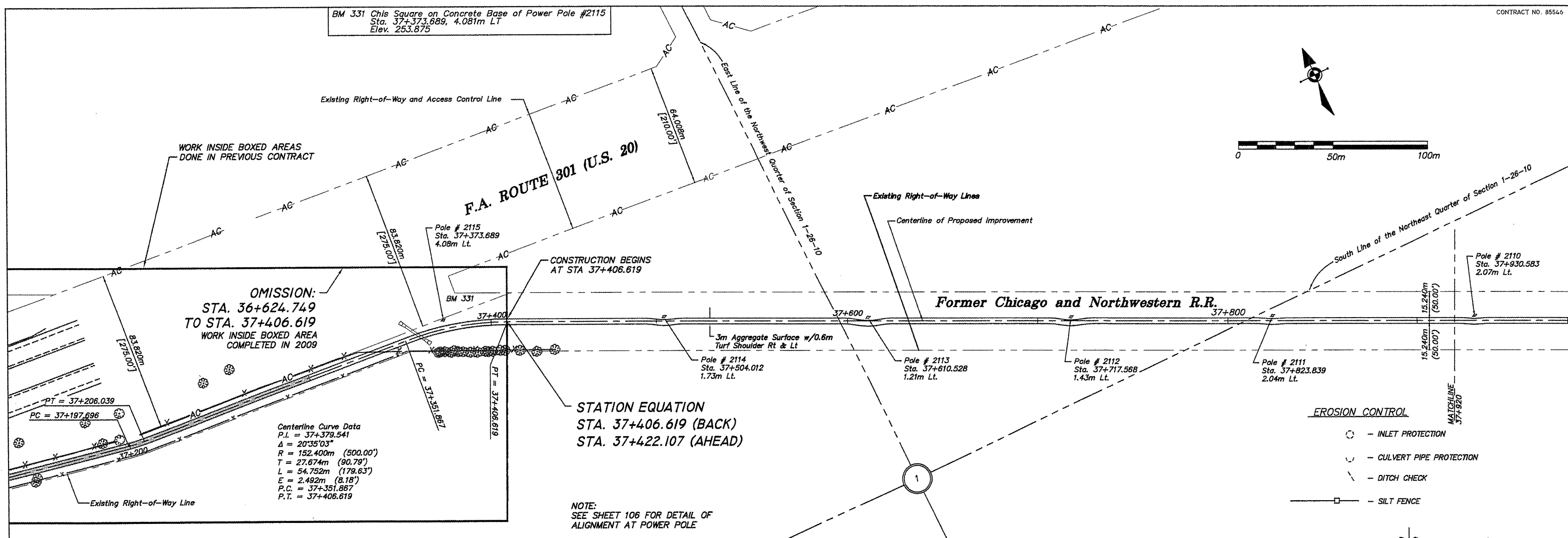


BM 331 Chis Square on Concrete Base of Power Pole #2115  
Sta. 37+373.689, 4.081m Lt  
Elev. 253.875

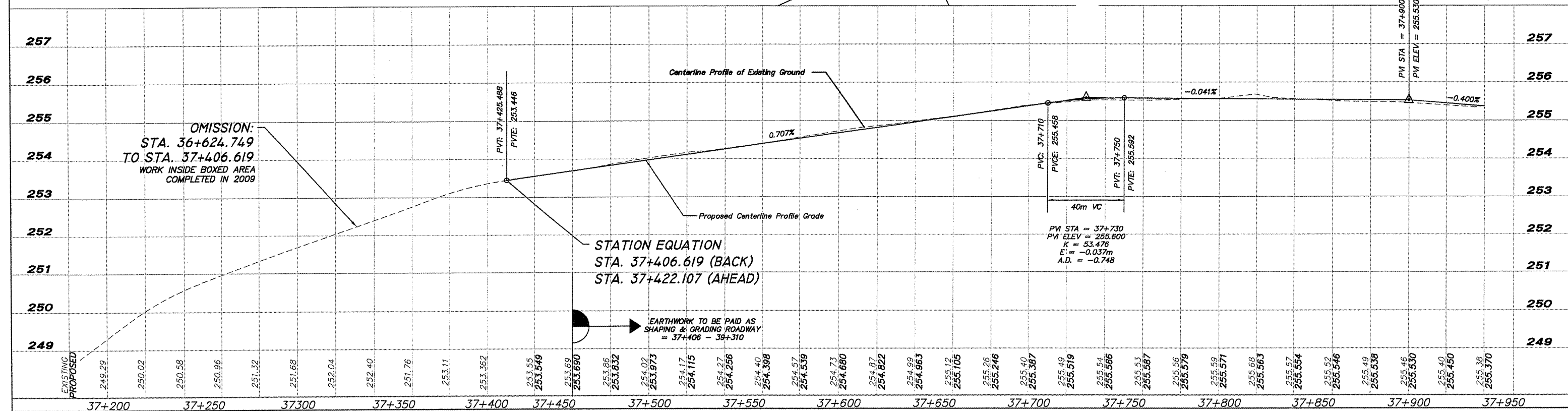


Centerline Curve Data  
P.I. = 37+379.541  
Δ = 20°35'03"  
R = 152.400m (500.00')  
T = 27.674m (90.79')  
L = 54.752m (179.63')  
E = 2.492m (8.18')  
P.C. = 37+351.867  
P.T. = 37+406.619

STATION EQUATION  
STA. 37+406.619 (BACK)  
STA. 37+422.107 (AHEAD)

NOTE:  
SEE SHEET 106 FOR DETAIL OF  
ALIGNMENT AT POWER POLE

- EROSION CONTROL**
- - INLET PROTECTION
  - ⌋ - CULVERT PIPE PROTECTION
  - - - - DITCH CHECK
  - - SILT FENCE



EXISTING	PROPOSED
249.29	249.29
250.02	250.02
250.58	250.58
250.96	250.96
251.32	251.32
251.68	251.68
252.04	252.04
252.40	252.40
251.76	251.76
253.11	253.11
253.362	253.362
253.55	253.55
253.549	253.549
253.69	253.69
253.690	253.690
253.86	253.86
253.832	253.832
254.02	254.02
253.973	253.973
254.17	254.17
254.115	254.115
254.27	254.27
254.236	254.236
254.40	254.40
254.398	254.398
254.57	254.57
254.539	254.539
254.73	254.73
254.680	254.680
254.87	254.87
254.822	254.822
254.99	254.99
254.963	254.963
255.12	255.12
255.105	255.105
255.26	255.26
255.246	255.246
255.40	255.40
255.387	255.387
255.49	255.49
255.519	255.519
255.54	255.54
255.566	255.566
255.53	255.53
255.587	255.587
255.56	255.56
255.579	255.579
255.59	255.59
255.571	255.571
255.68	255.68
255.563	255.563
255.57	255.57
255.554	255.554
255.52	255.52
255.546	255.546
255.49	255.49
255.538	255.538
255.46	255.46
255.530	255.530
255.40	255.40
255.450	255.450
255.38	255.38
255.370	255.370

SHEET REVIEW	
AGENCY	DATE

REVISIONS		
NO.	ITEM	DATE

SCALE: Hor.=1:1000 Ver.=1:50  
DRAWN BY: REK  
CHECKED BY: JWH  
DATE: DECEMBER 12, 2011

**McClure**  
Engineering Associates, Inc.  
7282 Argus Drive Rookford, Illinois 6107-6837  
(815) 398-2332 FAX (815) 398-2498  
Design Firm License: Illinois 184-00818  
Copyright 2011 by McClure Engineering Associates, Inc.

**PLAN & PROFILE 37+220 TO 37+920**  
PECATONICA PRAIRIE PATH  
WINNEBAGO COUNTY HIGHWAY DEPARTMENT SECTION 94-00267-00-BT  
FILE:H:\10-042 WINN CO PEC PATH\DESIGN\DRAWINGS\10-042 PP37+220 TO 37+920.DWG JOB-04-30-10-042