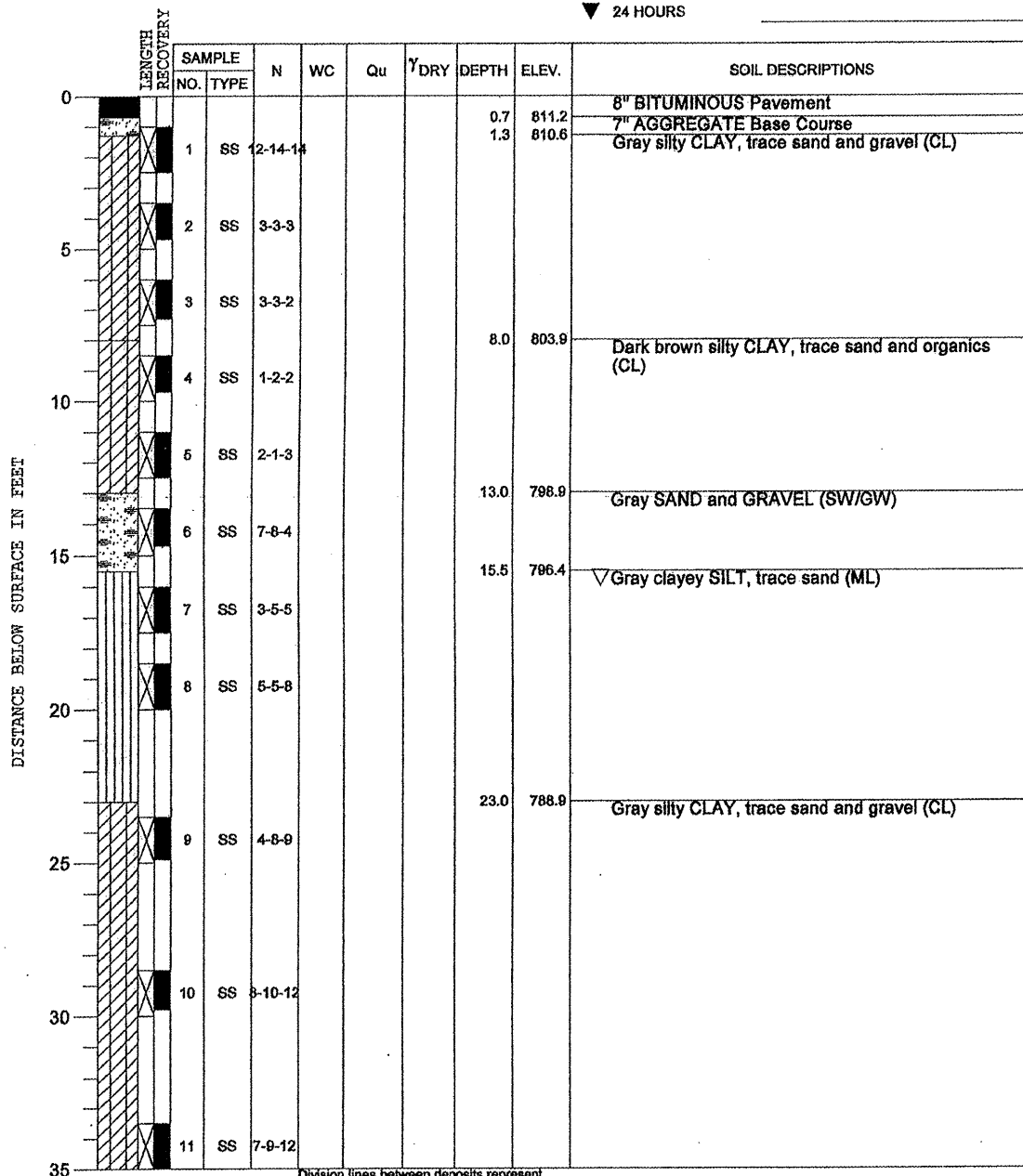
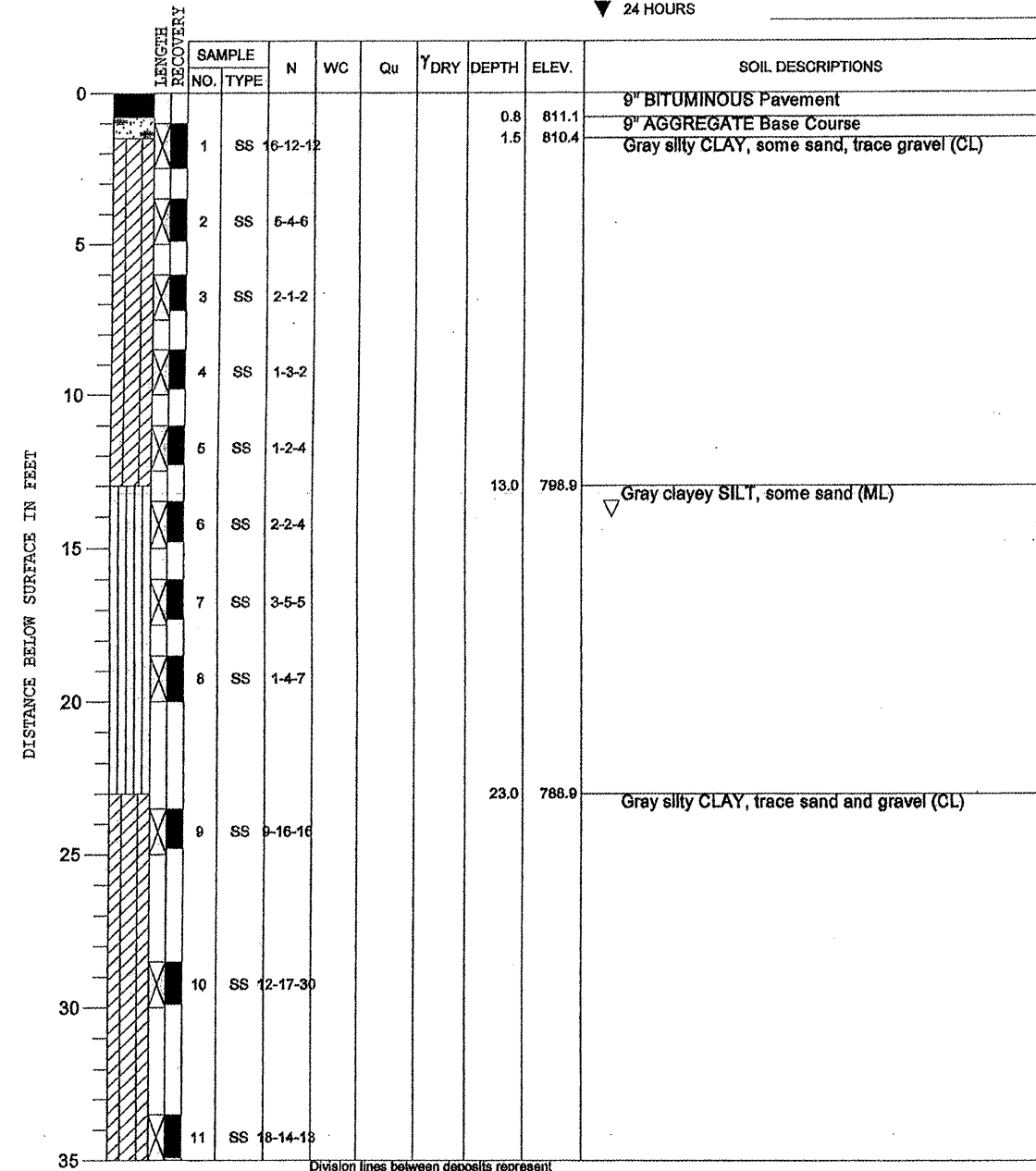


PROJECT **Montague Road Bridge, East Fork Mill Creek, Winnebago Township, Illinois**  
 CLIENT **Hanson Professional Services, Inc., 1525 S. Sixth St., Springfield, IL 62703**  
 BORING **B-1** DATE STARTED **2-17-04** DATE COMPLETED **2-17-04** JOB **L-59,938**  
 ELEVATIONS WATER TABLE  
 GROUND SURFACE **811.9** WHILE DRILLING **53.5'**  
 END OF BORING **755.1** AT END OF BORING **16'**  
 24 HOURS



DRILL RIG NO. **242** Division lines between deposits represent approximate boundaries between soil types; in-situ, the transition may be gradual. Page 1 of 2

PROJECT **Montague Road Bridge, East Fork Mill Creek, Winnebago Township, Illinois**  
 CLIENT **Hanson Professional Services, Inc., 1525 S. Sixth St., Springfield, IL 62703**  
 BORING **B-2** DATE STARTED **2-17-04** DATE COMPLETED **2-17-04** JOB **L-59,938**  
 ELEVATIONS WATER TABLE  
 GROUND SURFACE **811.9** WHILE DRILLING **48.5'**  
 END OF BORING **753.1** AT END OF BORING **14'**  
 24 HOURS



DRILL RIG NO. **242** Division lines between deposits represent approximate boundaries between soil types; in-situ, the transition may be gradual. Page 1 of 2

12/08/2011 1:03:10pm C:\3181808\CADD\Struct\Sheet\012-020-bor1.mxd

LAYOUT	SMK	1/25/11
DRAWN	JDM	12/16/11
REVIEWED	SMK	12/16/11

**BORING LOGS**  
**STRUCTURE NUMBER 101-3102**

PROFESSIONAL DESIGN FIRM LICENSE #184-001084

Hanson Professional Services Inc. © Copyright Hanson Professional Services Inc. 2011	JOB NO. 03R1808 DATE 12/16/11	SHEET NO. 12 13 SHEETS	F.A.S. RTE. 0052 SECTION 03-00324-00-BR COUNTY Winnebago FEDERAL DIST. NO. 2 ILLINOIS	TOTAL SHEETS 24 SHEET NO. 20 CONTRACT NO. 85552 FED. AID PROJECT
---	----------------------------------	---------------------------	--	---