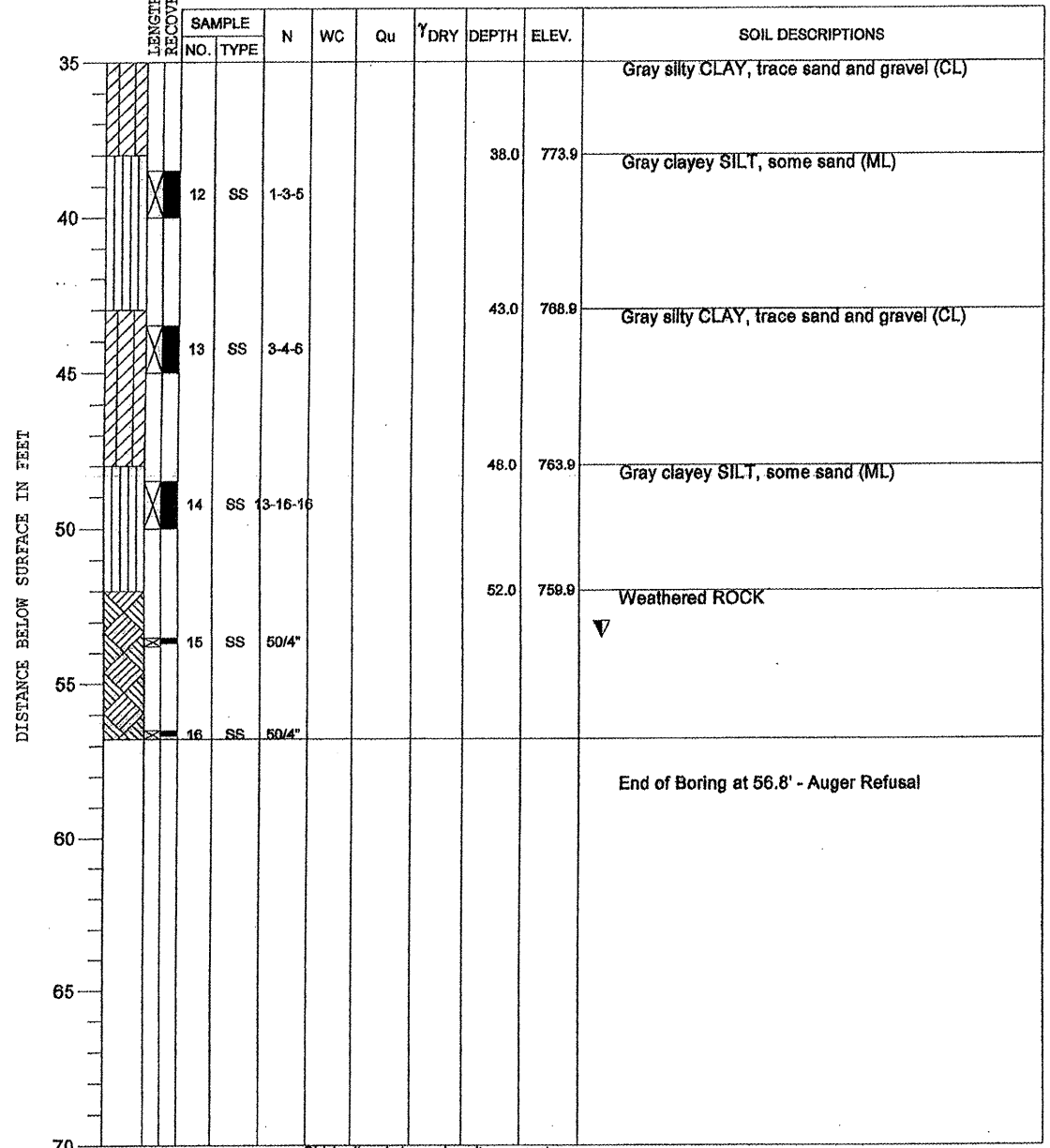


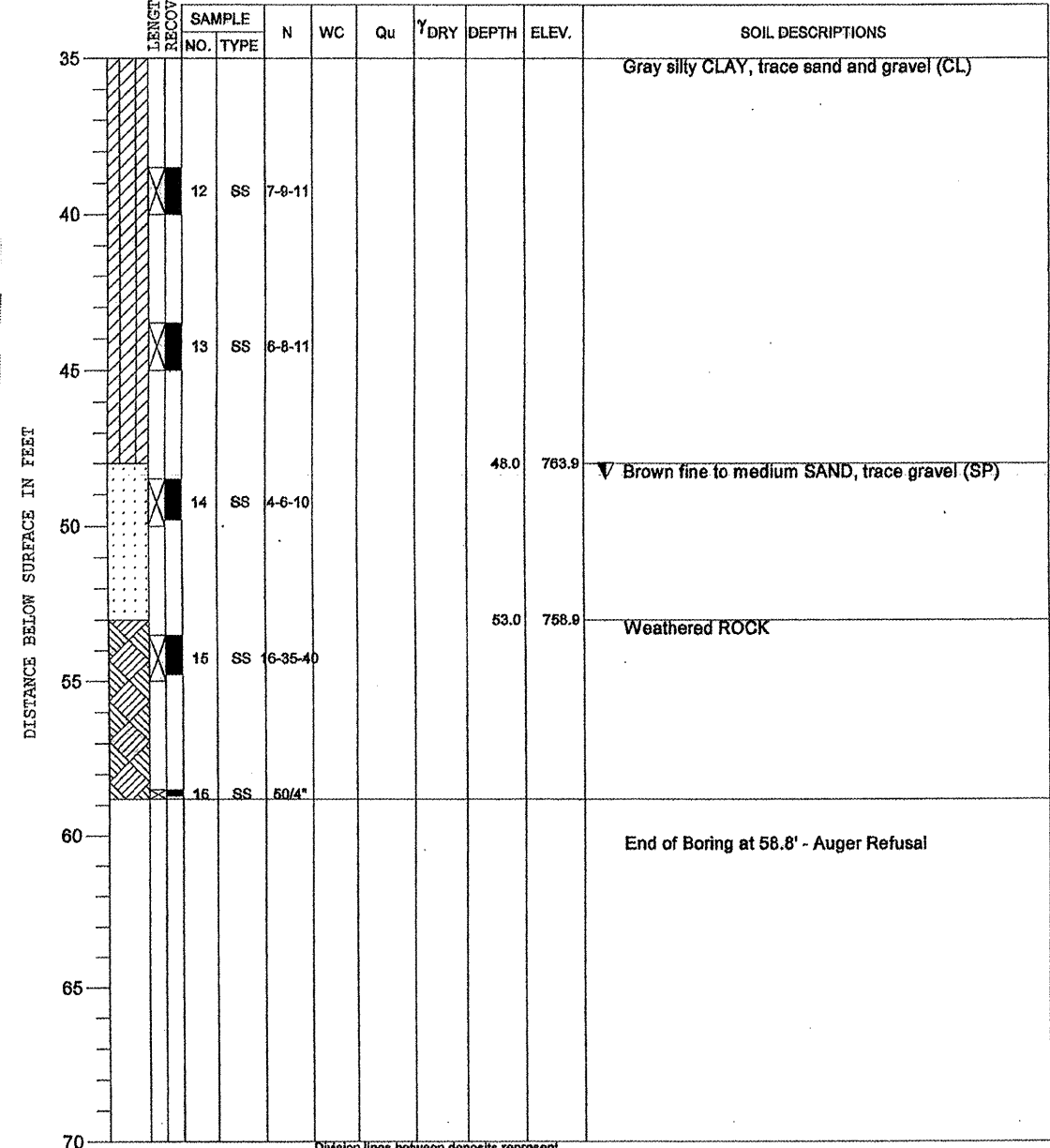
85552

PROJECT **Montague Road Bridge, East Fork Mill Creek, Winnebago Township, Illinois**
 CLIENT **Hanson Professional Services, Inc., 1525 S. Sixth St., Springfield, IL 62703**
 BORING **B-1** DATE STARTED **2-17-04** DATE COMPLETED **2-17-04** JOB **L-59,938**
 ELEVATIONS WATER TABLE
 GROUND SURFACE **811.9** WHILE DRILLING **53.5'**
 END OF BORING **755.1** AT END OF BORING **16'**
 24 HOURS



DRILL RIG NO. **242** Division lines between deposits represent approximate boundaries between soil types; in-situ, the transition may be gradual. Page 2 of 2

PROJECT **Montague Road Bridge, East Fork Mill Creek, Winnebago Township, Illinois**
 CLIENT **Hanson Professional Services, Inc., 1525 S. Sixth St., Springfield, IL 62703**
 BORING **B-2** DATE STARTED **2-17-04** DATE COMPLETED **2-17-04** JOB **L-59,938**
 ELEVATIONS WATER TABLE
 GROUND SURFACE **811.9** WHILE DRILLING **48.5'**
 END OF BORING **753.1** AT END OF BORING **14'**
 24 HOURS



DRILL RIG NO. **242** Division lines between deposits represent approximate boundaries between soil types; in-situ, the transition may be gradual. Page 2 of 2

12/08/2011 11:03:10am 03R1808-CADD-Struct-Sheet-S-013-021-bor-logs.dgn

LAYOUT	SWK	12/16/11
DRAWN	JON	12/16/11
REVIEWED	SWK	12/16/11

BORING LOGS
STRUCTURE NUMBER 101-3102

PROFESSIONAL DESIGN FIRM LICENSE #184-001084

Hanson Professional Services Inc. © Copyright Hanson Professional Services Inc. 2011	JOB NO. 03R1808	SHEET NO. 13	F.A.S. RTE. 0052	SECTION 03-00324-00-BR	COUNTY Winnebago	TOTAL SHEETS 24	SHEET NO. 21
	DATE 12/16/11	13 SHEETS	CONTRACT NO. 85552		FED. ROAD DIST. NO. 2 ILLINOIS FED. AID PROJECT		